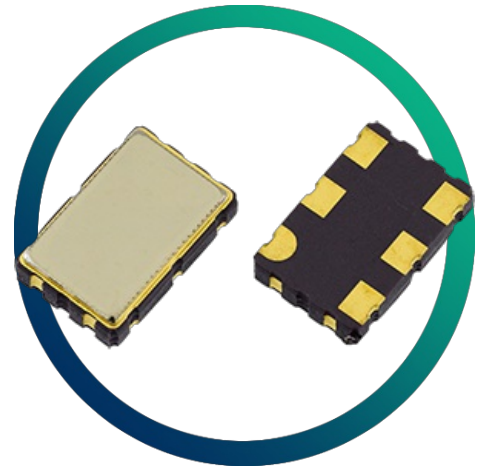


GVXO-53F

3.3V High Frequency VCXO

- High frequency using mesa technology
- Choice of pullability and stability
- Enable / disable tristate function
- Miniature SM package



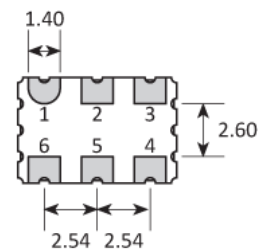
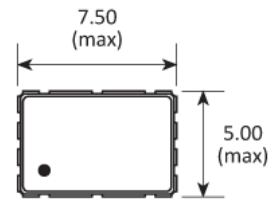
CONFIGURABLE OPTIONS

Parameter	Option Code
Frequency	
Frequency pullability	
Any	
±100ppm min (<80MHz only)	S
±50ppm min	N
Frequency stability	
Any	
±100ppm max	A
±50ppm max	B
±25ppm max (<52MHz only)	C
Operating temperature range	
Any	
-10 to +70°C	
-40 to +85°C	I

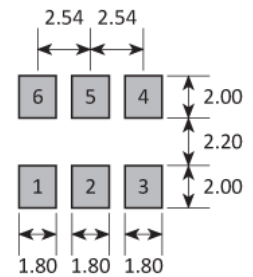
SPECIFICATIONS

Frequency range	1.0 ~ 125MHz
Dimensions	7.5 x 5.0 x 2.1mm
Voltage control	+1.65V \pm 1.5V, 10% linearity
Storage temperature range	-40 to +85 °C
Supply voltage (V_{DD})	+3.3V (\pm 0.3V)
Supply current	15mA max (1.0 ~ 30.0MHz) 25mA max (>30.0 ~ 52.0MHz) 35mA max (>52.0 ~ 125MHz)
Driving ability	15pF CMOS
Logic levels	'0' level = 10% V_{DD} max '1' level = 90% V_{DD} min
Output current	'0' level = 4.0mA min '1' level = -1.0mA min
Waveform symmetry	40:60 max
Rise / fall time	5ns max (20%~80% V_{DD})
Start up time	10ms max
Enable / disable function	Tristate (control via pad 2)
Enable / disable time	150ns / 150ns max

PACKAGE DRAWING



SOLDER PAD LAYOUT



TOP VIEW

PAD	CONNECTION
1	Control voltage
2	Enable / disable
3	Ground
4	Output
5	Not connected
6	Supply

Dimensions in mm

ORDERING INFORMATION

To request a quotation for the GVXO-53F please use the configurable options form to choose the options you require and then submit your configured product to our team. Our expert advisers are always happy to help with your requirements and can be contacted on +44 1460 256 100 or at sales@golledge.com.

Once we've received your request our expert team will then produce a quotation tailored to meet your needs using the option codes you've selected.

Following product selection you will be issued with a seven character Golledge part number. Your Golledge part number is the internationally accepted Golledge manufacturing part number (MPN) that should be used for all project documentation, including bills of materials (BoMs) and purchase orders.

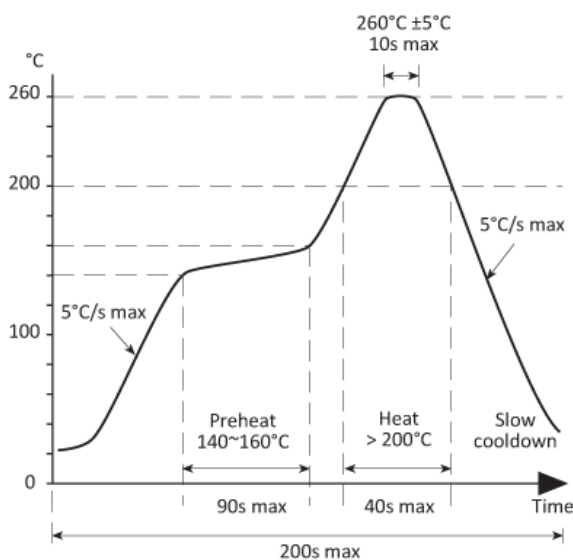
If you have any queries regarding any of our documentation our dedicated sales team will be happy to help.

ENABLE / DISABLE FUNCTION

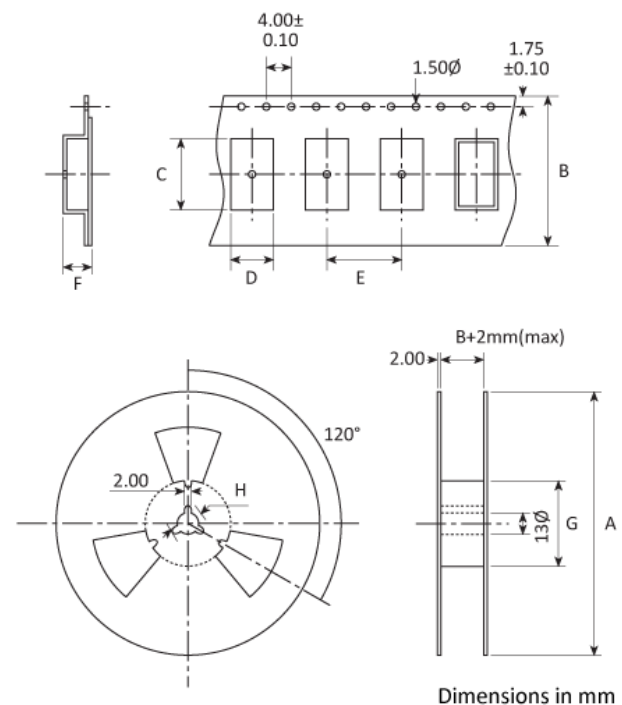
Input (pad 2)	Output (pad 4)
Open	Enabled
'1' level	Enabled
'0' level	High Impedance

Enable / disable function can be supplied on pad 5 if required

SOLDERING PROFILE



TAPE & REEL SPECIFICATION



A:250 / B:16 / C:7.9 / D:5.4 / E:8.0 / F:2.5 / G:80 / H:25

HANDLING & STORAGE



Human Body Model (HBM) 1A (250V to <500V)



Moisture Sensitivity Level (MSL): 1 (or not applicable)

COMPLIANCE



Lead-free (< 0.1% by weight)



RoHS compliant with no exemptions. [See our declaration](#)



REACH compliant. [See our statement](#)



Free of conflict minerals. [See our declaration](#)



Free of Halogens. [See our declaration](#)



Free of Ozone-depleting substances. [See our declaration](#)