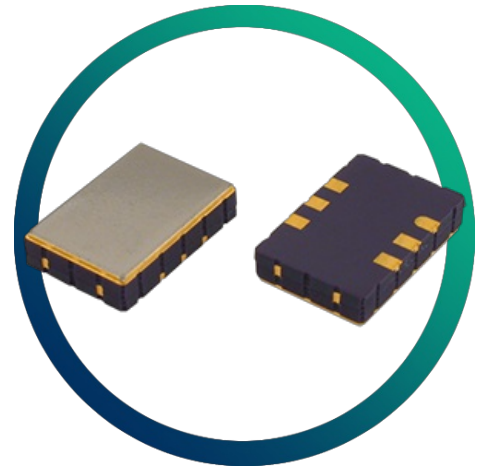


GVXO-27L

High Frequency Fundamental Mode

3.3V VCXO

- Fundamental mode crystal up to 75.0MHz
- CMOS compatible output
- Low jitter and fast rise / fall
- 3.3V supply
- Enable / disable tristate function



CONFIGURABLE OPTIONS

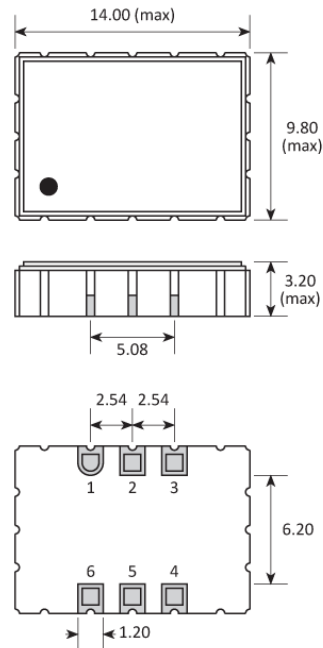
Parameter	Option Code
Frequency	
Frequency pullability	
Any	
±50ppm min	N
±80ppm min	P
±100ppm min	S
Frequency stability	
* see note below	
Any	
±50ppm max	B
±30ppm max	C
Operating temperature range	
Any	
-10 to +70°C	
-40 to +85°C	I

* Frequency stability is inclusive of calibration @ 25°C, operating temperature range, supply voltage change, load change and ageing, with $V_{CTL} = 50\% V_{DD}$

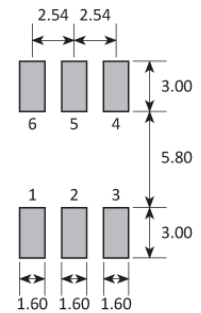
SPECIFICATIONS

Frequency range	1.0 ~ 75.0MHz
Dimensions	14.0 x 9.8 x 3.2mm
Voltage control (V_{CTL})	+1.65V \pm 1.5V, 10% linearity
Storage temperature range	-40 to +85 °C
Supply voltage (V_{DD})	+3.3V (\pm 5%)
Supply current	20mA max (1.0 ~ 30.0MHz) 30mA max (30.0 ~ 45.0MHz) 50mA max (45.0 ~ 75.0MHz)
Driving ability	15pF CMOS
Logic levels	'0' level = 10% V_{DD} max '1' level = 90% V_{DD} min
Waveform symmetry	40:60 max @ 50% V_{DD}
Start up time	10ms max
Rise / fall time	5ns max (20% ~ 80% V_{DD})
Jitter	4.26ps (RMS) @ 32.768MHz 5.39ps (RMS) @ 70.656MHz
Enable / disable function	Control via pad 2
Enable / disable time	150ms max
Soldering condition	Reflow, 260 °C x 10sec x2 max

PACKAGE DRAWING



SOLDER PAD LAYOUT



TOP VIEW

PAD	CONNECTION
1	Control voltage
2	Enable / disable
3	Ground
4	Output
5	Not connected
6	Supply

Dimensions in mm

ORDERING INFORMATION

To request a quotation for the GVXO-27L please use the configurable options form to choose the options you require and then submit your configured product to our team. Our expert advisers are always happy to help with your requirements and can be contacted on +44 1460 256 100 or at sales@golledge.com.

Once we've received your request our expert team will then produce a quotation tailored to meet your needs using the option codes you've selected.

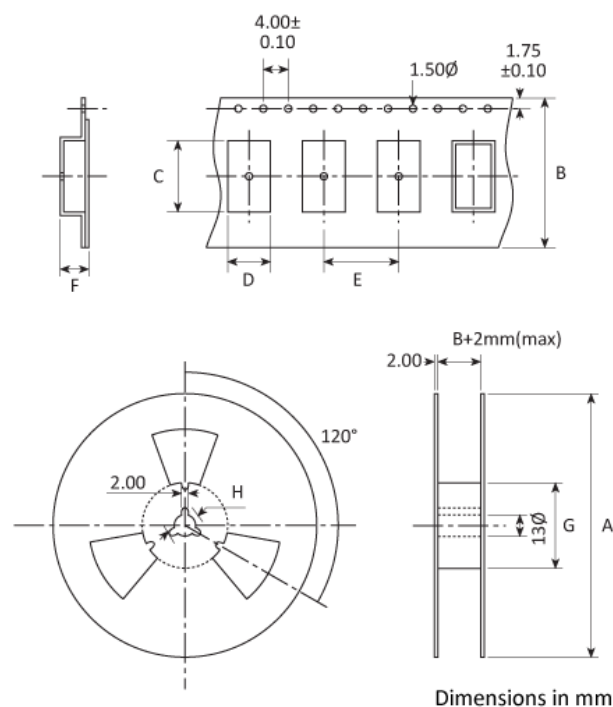
Following product selection you will be issued with a seven character Golledge part number. Your Golledge part number is the internationally accepted Golledge manufacturing part number (MPN) that should be used for all project documentation, including bills of materials (BoMs) and purchase orders.

If you have any queries regarding any of our documentation our dedicated sales team will be happy to help.

ENABLE / DISABLE FUNCTION

Input (pad 2)	Output (pad 4)
Open	Active
'1' level V_{IH}	Active
'0' level V_{IL}	High Impedance

TAPE & REEL SPECIFICATION



A:330 / B:24 / C:14.4 / D:10 / E:12 / F:4 / G:80 / H:21

HANDLING & STORAGE



Human Body Model (HBM) 1A (250V to <500V)



Moisture Sensitivity Level (MSL): 1 (or not applicable)

CONSTRUCTION

Ceramic package with metal lid

COMPLIANCE



Lead-free (< 0.1% by weight)



RoHS compliant with no exemptions. [See our declaration](#)



REACH compliant. [See our statement](#)



Free of conflict minerals. [See our declaration](#)



Free of Halogens. [See our declaration](#)



Free of Ozone-depleting substances. [See our declaration](#)