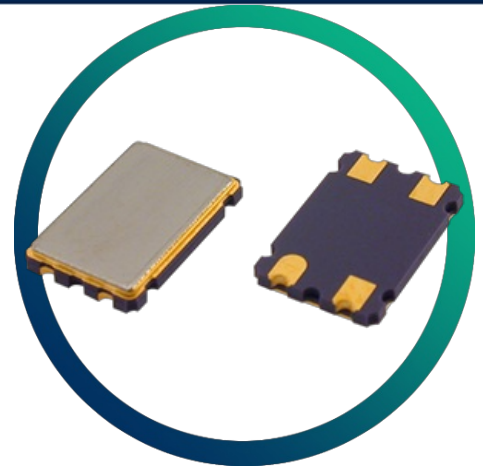


GSX-2

High Frequency Miniature SM Crystal

- Frequencies up to 100MHz
- Tight specifications available
- Metal lid can be grounded to minimise EMI
- Low height for maximum space saving



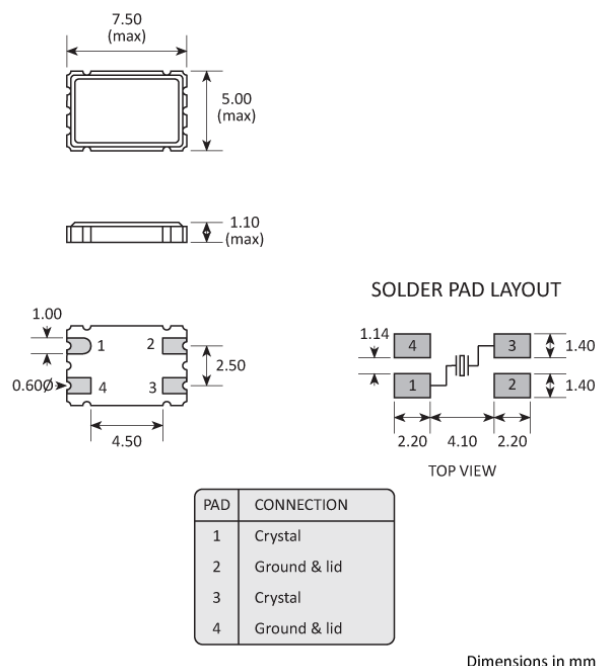
CONFIGURABLE OPTIONS

| Parameter | Option Code |
|-------------------------------|-------------|
| Frequency | |
| Calibration tolerance | |
| Any | |
| ±10ppm | 1 |
| ±20ppm | 2 |
| ±30ppm | 3 |
| Temperature stability | |
| Any | |
| ±10ppm | 1 |
| ±15ppm | P |
| ±20ppm | 2 |
| ±30ppm | 3 |
| ±50ppm | 5 |
| Operating temperature range | |
| Any | |
| -10 to +60°C | 1 |
| -20 to +70°C | 2 |
| -30 to +80°C | 3 |
| -40 to +85°C | 4 |
| Circuit condition | |
| Any | |
| 9pF | N |
| 10pF | A |
| 12pF | B |
| 16pF | D |
| 18pF | E |
| 20pF | F |
| 30pF | J |
| Series resonant | S |
| Oscillation mode | |
| Any | |
| Fundamental (6.0 ~ 48.0MHz) | F |
| 3rd overtone (28.0 ~ 84.0MHz) | 3 |
| 5th overtone (84.0 ~ 100MHz) | 5 |

SPECIFICATIONS

| | |
|--------------------------------------|---|
| Frequency range | 6.0 ~ 100.0MHz |
| Dimensions | 7.5 x 5.0 x 1.1mm |
| Static capacitance (C ₀) | 7pF max |
| Equivalent series resistance | 80Ω max (6.0 ~ 9.9MHz) 50Ω max (10.0 ~ 15.9MHz) 40Ω max (16.0 ~ 48.0MHz, fund) 60Ω max (28.0 ~ 84.0MHz, 3rd OT) 80Ω max (84.1 ~ 100MHz, 5th OT) |
| Ageing | ±5ppm max first year |
| Test drive level | 100μW |
| Soldering condition | 260°C, 10 sec x2 max .. |

PACKAGE DRAWING



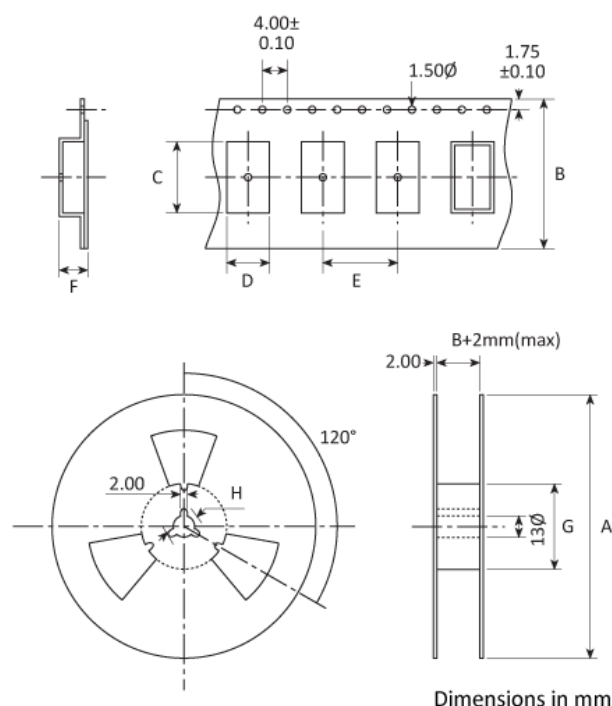
ORDERING INFORMATION

To request a quotation for the GSX-2 please use the configurable options form to choose the options you require and then submit your configured product to our team. Our expert advisers are always happy to help with your requirements and can be contacted on +44 1460 256 100 or at sales@golledge.com.

Following product selection you will be issued with a seven character Golledge part number. Your Golledge part number is the internationally accepted Golledge manufacturing part number (MPN) that should be used for all project documentation, including bills of materials (BoMs) and purchase orders.

If you have any queries regarding any of our documentation our dedicated sales team will be happy to help.

TAPE & REEL SPECIFICATION



HANDLING & STORAGE



Human Body Model (HBM) 1A (250V to <500V)



Moisture Sensitivity Level (MSL): 1 (or not applicable)

CONSTRUCTION

Ceramic base with metal lid

COMPLIANCE



Lead-free (< 0.1% by weight)



RoHS compliant with no exemptions. [See our declaration](#)



REACH compliant. [See our statement](#)



Free of conflict minerals. [See our declaration](#)



Free of Halogens. [See our declaration](#)



Free of Ozone-depleting substances. [See our declaration](#)