

CM8V-T1A

Ultra-Miniature 2012 Package

32.768kHz SM Watch Crystal

- Ultra low profile - 0.6mm
- High shock & vibration resistance
- Extended temperature range option
- AEC-Q200 Automotive option
- Low power consumption



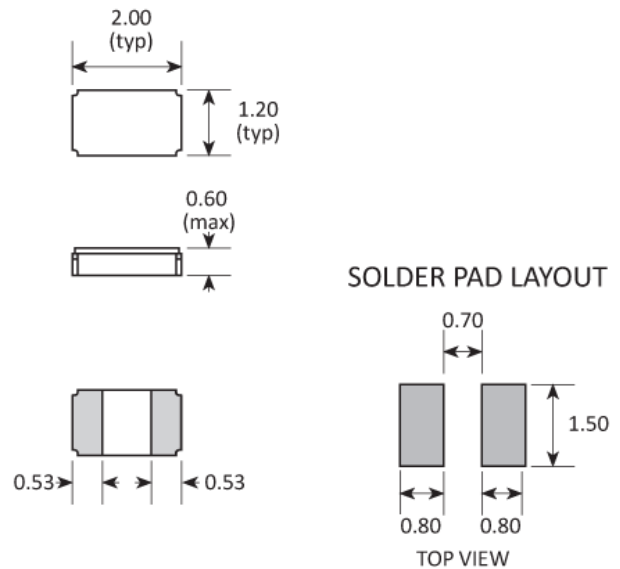
CONFIGURABLE OPTIONS

Parameter	Option Code
Calibration tolerance	
±20ppm	
±100ppm	
Operating temperature range	
Any	
-40 to +85 °C	
-40 to +125 °C	E
-55 to +125 °C	M
Circuit condition	
Any	
4pF	
6pF	
7pF	
9pF	
12.5pF	
Qualification	
Any	
Commercial	
AEC-Q200 (Automotive)	A

SPECIFICATIONS

Frequency	32.768kHz
Dimensions	2.0 x 1.2 x 0.6mm
Storage temperature range	-55 to +125 °C
Static capacitance (C_0)	1.1pF typ
Motional capacitance (C_1)	3.7fF typ
Equivalent series resistance	55k Ω typ, 75k Ω max
Ageing	± 3 ppm max first year
Drive level	0.5 μ W max
Turnover temperature (T_0)	+25 °C ± 5 °C
Frequency / temp coefficient	-0.035ppm/°C ² typ
Shock resistance	± 5 ppm, 5,000g, 0.3ms, ½ sine
Vibration resistance	± 5 ppm, 20g, 10.0 ~ 2,000Hz
Terminations	Gold plated pads
Soldering condition	Reflow, 260 °C, 20 sec max
Net mass	4.58mg

PACKAGE DRAWING



Dimensions in mm

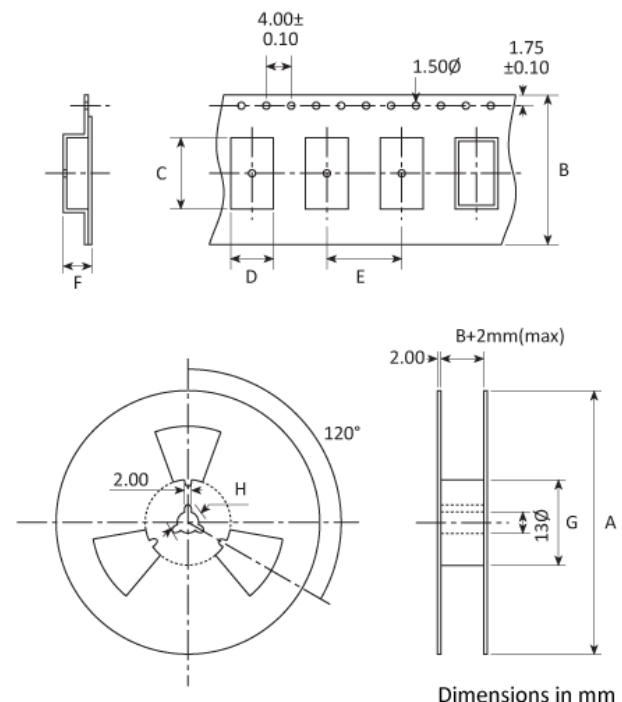
ORDERING INFORMATION

To request a quotation for the CM8V-T1A please use the configurable options form to choose the options you require and then submit your configured product to our team. Our expert advisers are always happy to help with your requirements and can be contacted on +44 1460 256 100 or at sales@golledge.com.

Following product selection you will be issued with a seven character Golledge part number. Your Golledge part number is the internationally accepted Golledge manufacturing part number (MPN) that should be used for all project documentation, including bills of materials (BoMs) and purchase orders.

If you have any queries regarding any of our documentation our dedicated sales team will be happy to help.

TAPE & REEL SPECIFICATION



Dimensions in mm

A:178 B:8 C:2.2 D:1.4 E:4 F:0.9 G:61.5 H:21

HANDLING & STORAGE



Human Body Model (HBM) 1A (250V to <500V)



Moisture Sensitivity Level (MSL): 1 (or not applicable)

CONSTRUCTION

Ceramic base with metal lid

COMPLIANCE

Please refer to our **DOCUMENTS** section for more information.



Lead-free (< 0.1% by weight)



RoHS compliant with no exemptions.



REACH compliant.



Free of conflict minerals.



Free from halogens.



Free from ozone-depleting substances.