

Product Description

Description:	28.636360MHz GSX-333/112DF SM Crystal
Product family:	GSX-333
Category:	SM Quartz Crystal
Order code:	MP04599

Features

- ▶ Metal lid can be grounded to minimise EMI
- ▶ Seam sealed for excellent long-term stability
- ▶ Ultra-miniature for maximum space saving

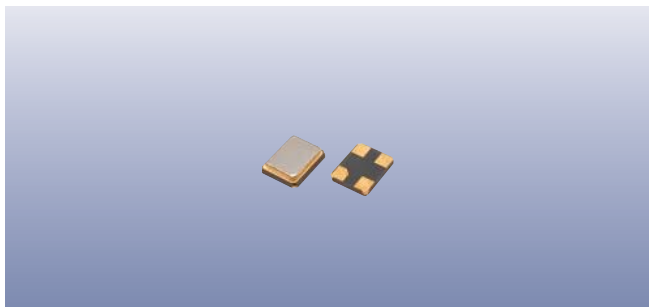
Additional Information

For further information regarding packaging, construction, material composition, soldering profile and environment, please refer to **GSX-333 Product Information sheet**

For dimensions, refer to package drawing: **D0262-A**

Electrical Specifications

Parameter	Value	Notes
Nominal frequency:	28.636360MHz	
Calibration tolerance:	±10ppm	
Temperature stability:	±10ppm	
Operating temperature range:	-20 to +70°C	
Storage temperature range:	-40 to +85°C	
Circuit condition (C_L):	16pF	
Oscillation mode:	Fundamental	
Equivalent series resistance:	50Ω max	
Frequency perturbation:	±1ppm max	
Test drive level:	10μW	
Ageing:	±1ppm max	First year



Packaging & Handling

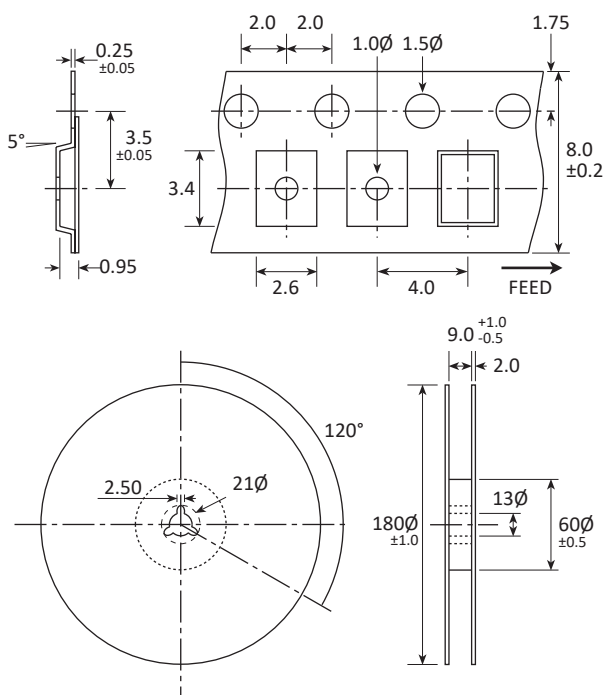
Production quantities supplied on T&R, 3k pcs per reel.
Small quantities may be supplied on tape (no reel), or in bulk.

Marking

FREQUENCY
DC

Marking type: Laser
DC = Date code

Tape & Reel Specification



Not to scale. Dimensional tolerances $\pm 0.1\text{mm}$ unless otherwise stated.

Construction

- Ceramic body with gold-plated pads
- Metal lid, seam sealed

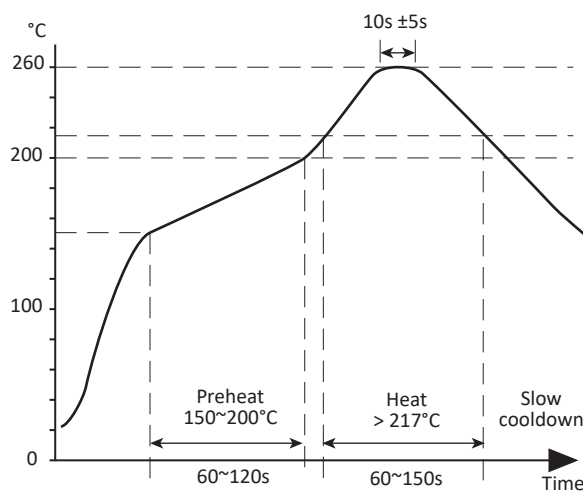
Composition



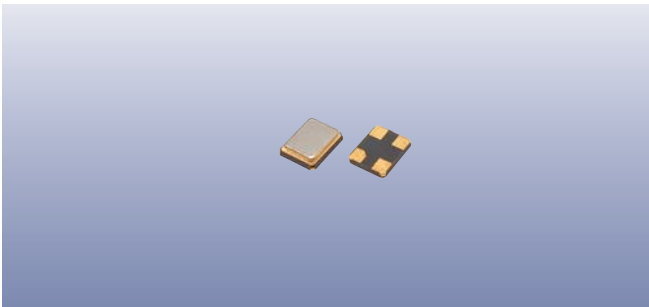
This product is lead-free, and is fully compliant with current RoHS directives





Soldering Profile

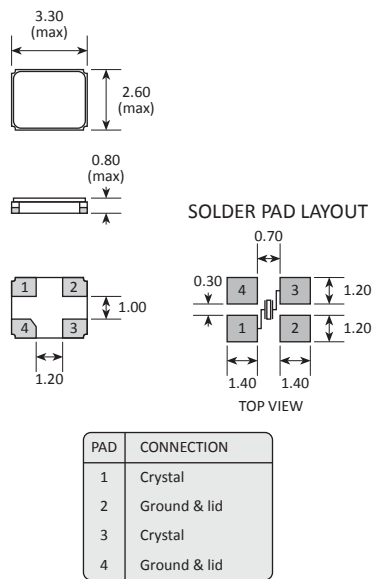


Lead free solderability limits $260^{\circ}\text{C} \pm 5^{\circ}\text{C} \times 10\text{s} \pm 5\text{s} \times 2$.



Product Family
GSX-333
Construction
 Ceramic body with gold-plated pads
 Metal lid, seam sealed

Dimensions (mm)



NOTE: Chamfer normally on pad 4, but may alternatively be supplied on pad 1.