

Product Description

Description:	40.0MHz GSX-333/112BF SM Crystal
Product family:	GSX-333
Category:	SM Quartz Crystal
Order code:	MP05266

Features

- ▶ Metal lid can be grounded to minimise EMI
- ▶ Seam sealed for excellent long-term stability
- ▶ Ultra-miniature for maximum space saving

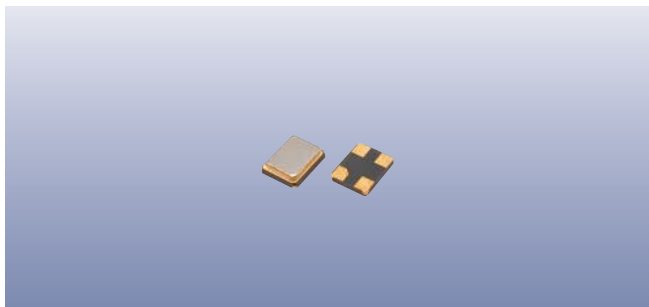
Additional Information

For further information regarding packaging, construction, material composition, soldering profile and environment, please refer to **GSX-333 Product Information sheet**

For dimensions, refer to package drawing: **D0262-A**

Electrical Specifications

Parameter	Value	Notes
Nominal frequency:	40.0MHz	
Calibration tolerance:	±10ppm	At 25°C ±3°C
Temperature stability:	±10ppm	Referred to frequency at 25°C
Operating temperature range:	-20 to +70°C	
Storage temperature range:	-40 to +85°C	
Circuit condition (C_L):	12pF	
Oscillation mode:	Fundamental	
Equivalent series resistance:	50Ω max	
Frequency perturbation:	±1ppm max	
Test drive level:	10μW	
Ageing:	±1ppm max	First year



Packaging & Handling

Production quantities supplied on T&R, 3k pcs per reel.
Small quantities may be supplied on tape (no reel), or in bulk.

Marking

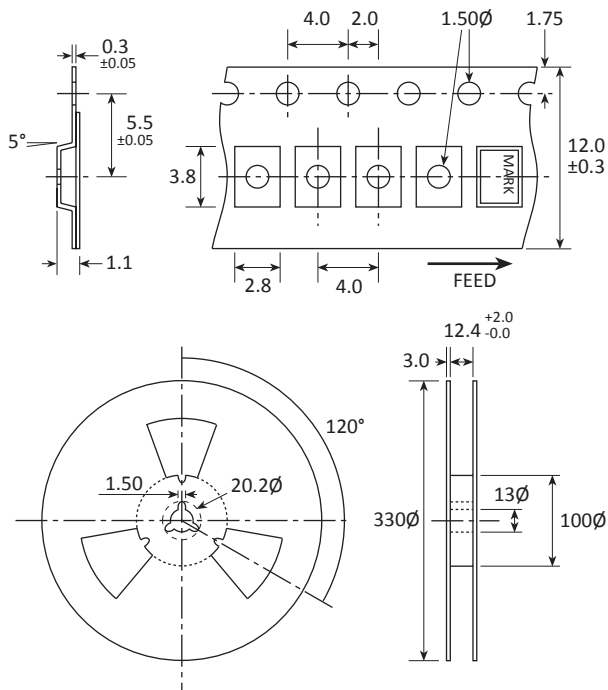
FREQUENCY
T zDC

Marking type: Laser
DC = Date code in YW, as shown below
Example: "zd" = 2012 week 30

Year	2009	2010	2011	2012
	2013	2014	2015	2016
Code	Z	z	⌒	⌒

Week codes:
A ~ Z: weeks 1 to 26
a ~ z: weeks 27 to 52

Tape & Reel Specification



Not to scale. Dimensional tolerances ±0.1mm unless otherwise stated.

Construction

- ➡ Ceramic body with gold-plated pads
- ➡ Metal lid, seam sealed

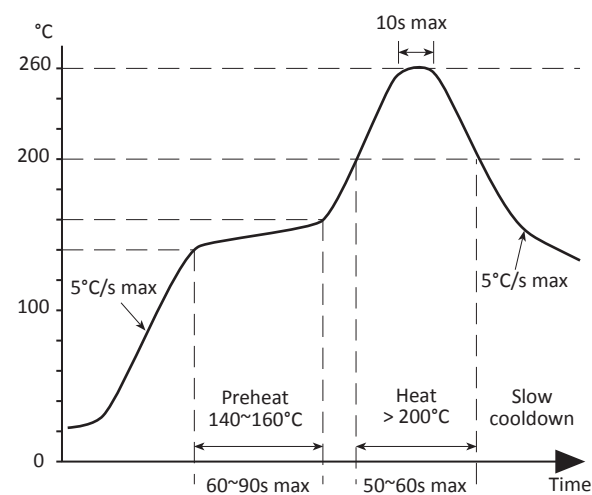
Composition



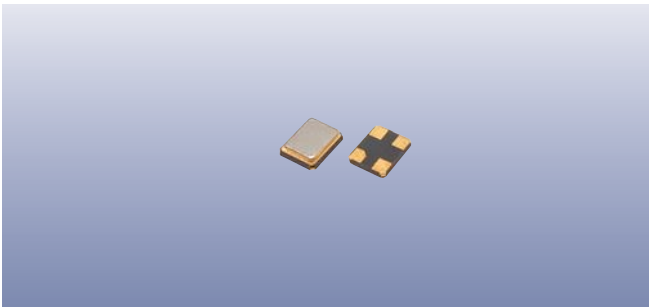
This product is lead-free, and is fully compliant with the RoHS directive 2002/95/EC





Soldering Profile

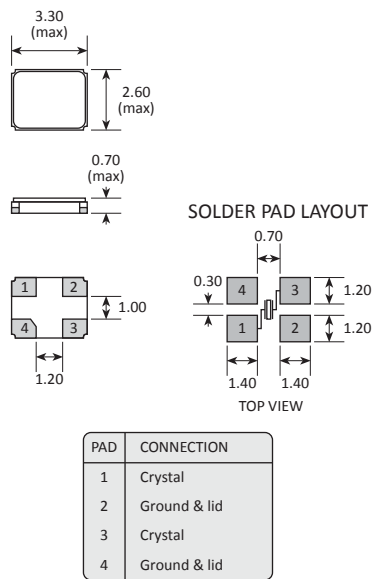


Maximum solder resistance: 260°C x 10 secs x 2.



Product Family
GSX-333
Construction
 Ceramic body with gold-plated pads
 Metal lid, seam sealed

Dimensions (mm)



NOTE: Chamfer normally on pad 4, but may alternatively be supplied on pad 1.