

SAW Filter: 1237.0MHz
Part No: MP10403

Model: TA1237LL
Rev No: 1

A. MAXIMUM RATING:

Electrostatic Sensitive Device (ESD)

1. Input Power Level: 30dBm (*)
2. DC Voltage: 3V
3. Operating Temperature: -20°C to +70°C
4. Storage Temperature: -40°C to +85°C

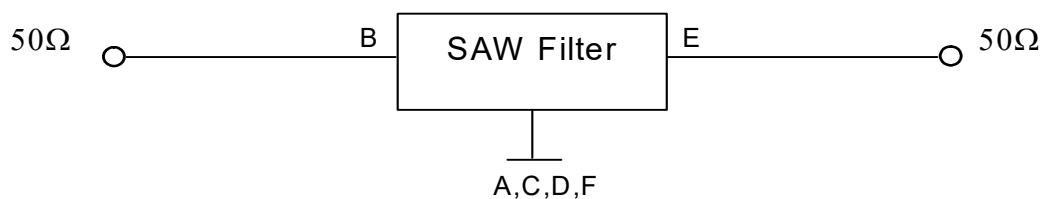
B. ELECTRICAL CHARACTERISTICS:

Item	Unit	Min.	Typ.	Max.
Center frequency Fc	MHz	-	1237	-
Insertion loss at 1237MHz IL	dB	-	1.1	1.8
Amplitude Ripple (1217 ~ 1257MHz)	dB	-	0.6	2.0
VSWR (1217 ~ 1257MHz)	-	-	1.6	2.5
Attenuation (Reference level from 0dB)				
D.C. ~ 1150MHz	dB	13	16	-
1300 ~ 3000MHz	dB	13	17	-
Temperature coefficient of frequency	ppm/k	-	-36	-

(*): Power input period is 10 seconds.

C. MEASUREMENT CIRCUIT:

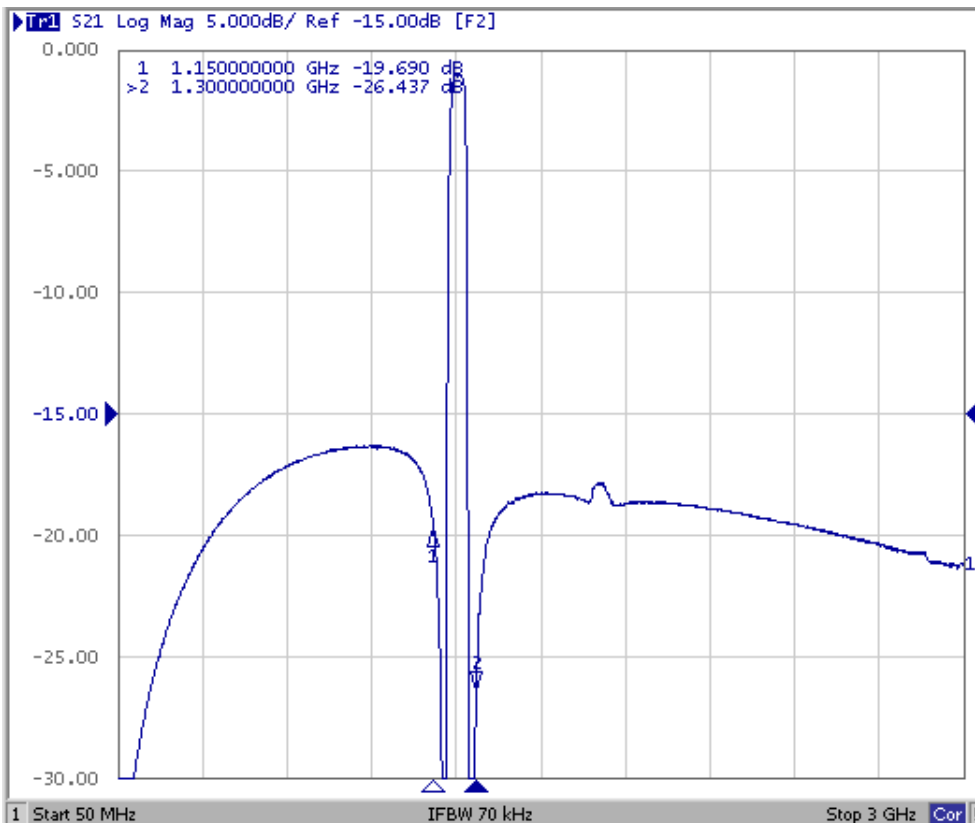
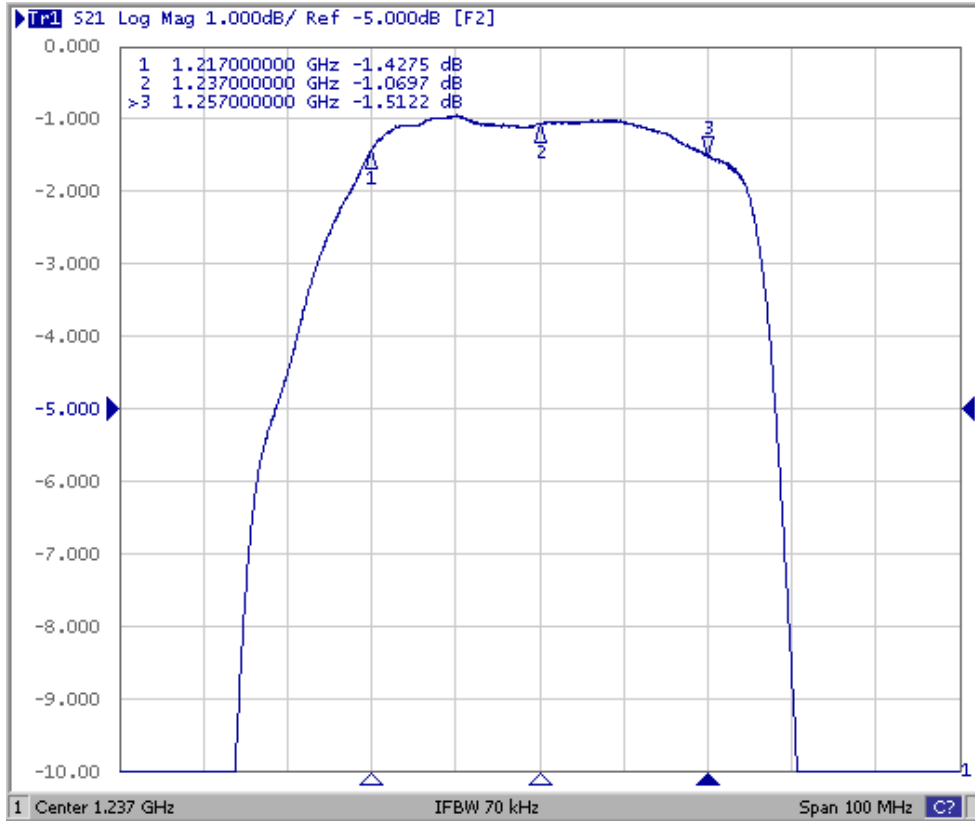
HP Network analyzer



SAW Filter: 1237.0MHz
Part No: MP10403

Model: TA1237LL
Rev No: 1

D. FREQUENCY CHARACTERISTICS:

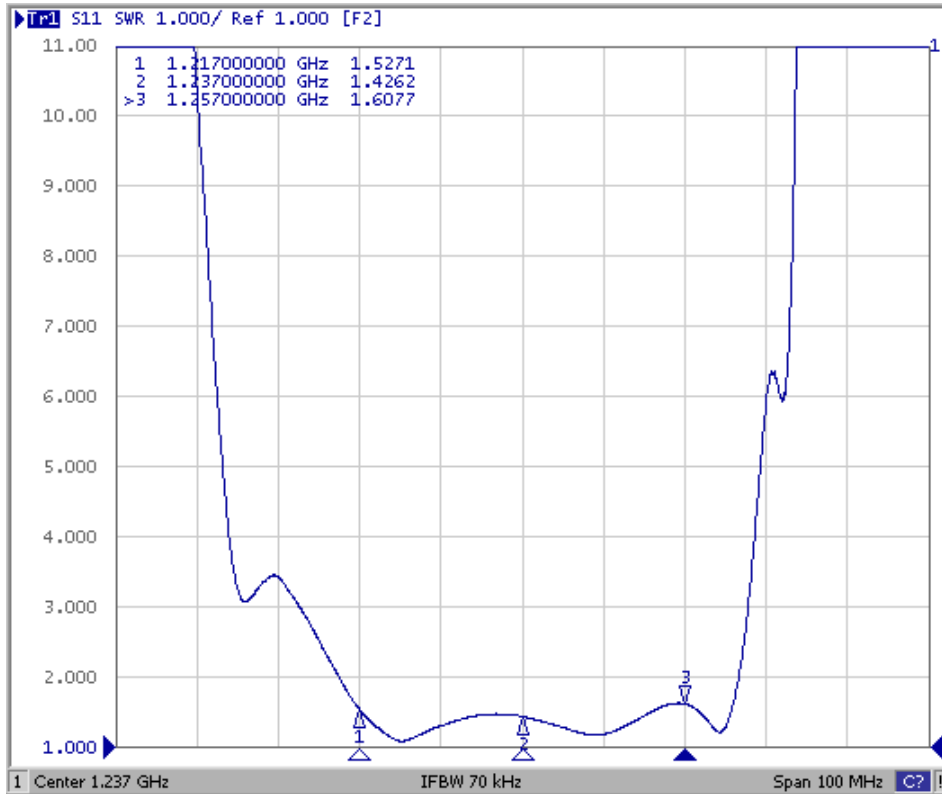


SAW Filter: 1237.0MHz
Part No: MP10403

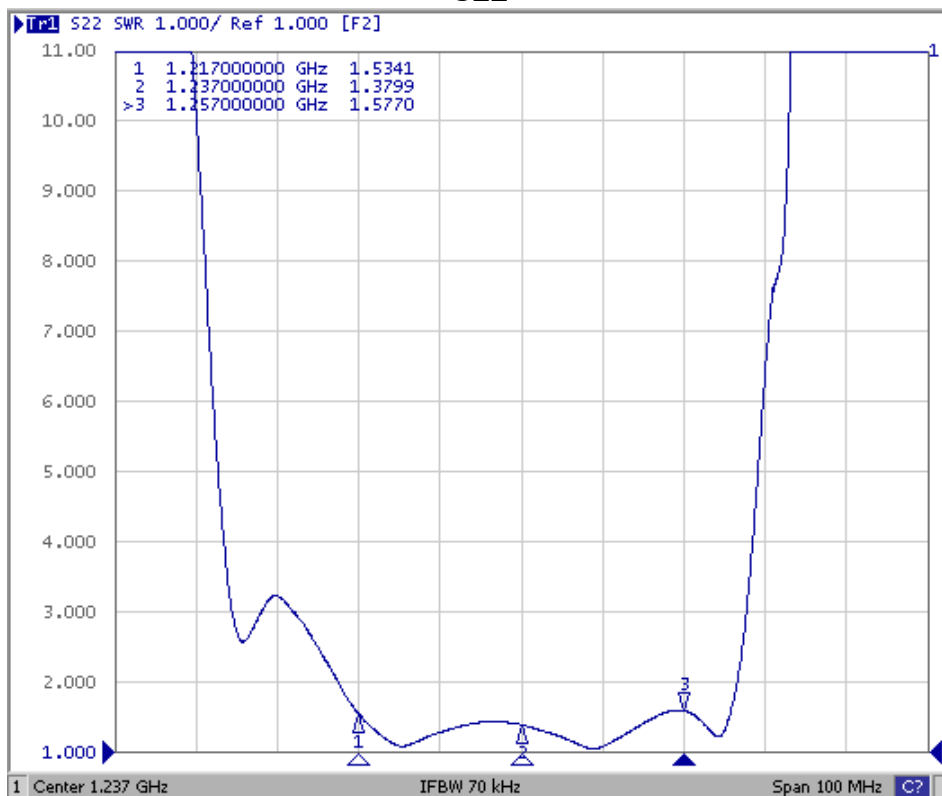
Model: TA1237LL
Rev No: 1

Reflection Functions

S11



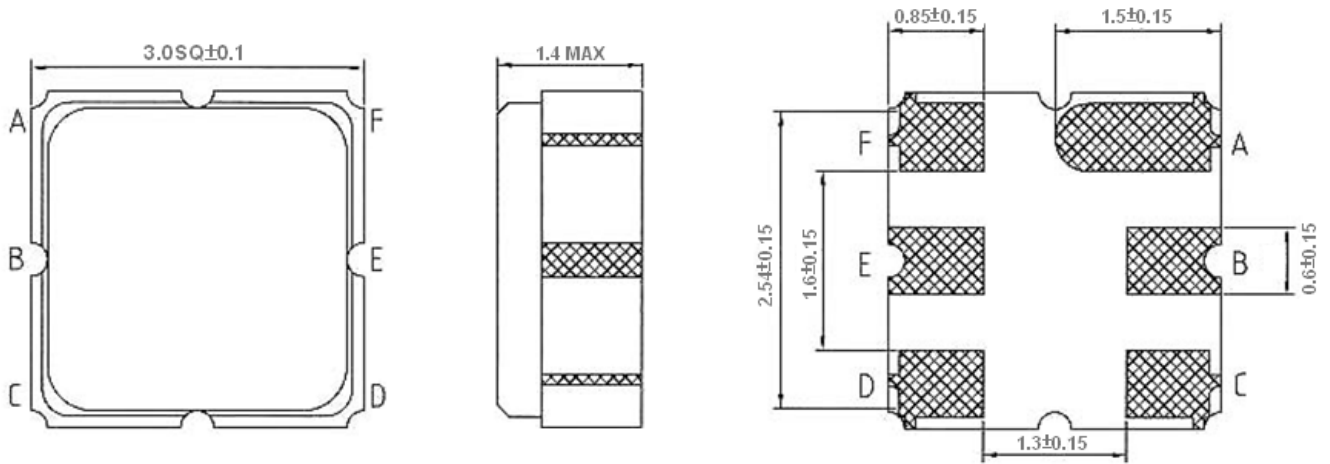
S22



SAW Filter: 1237.0MHz
Part No: MP10403

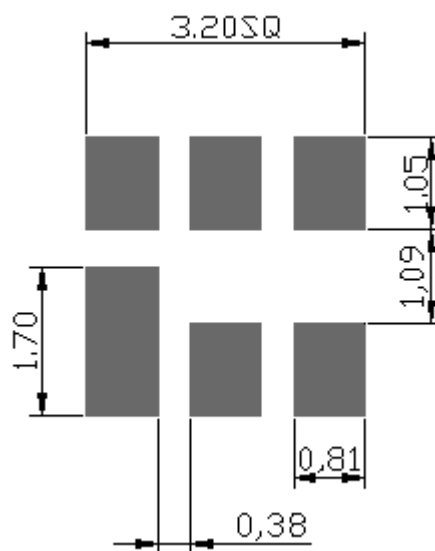
Model: TA1237LL
Rev No: 1

E. OUTLINE DRAWING:



B: Input
 E: Output
 A, C, D, F: Ground
 Unit: mm

F. PCB FOOTPRINT:

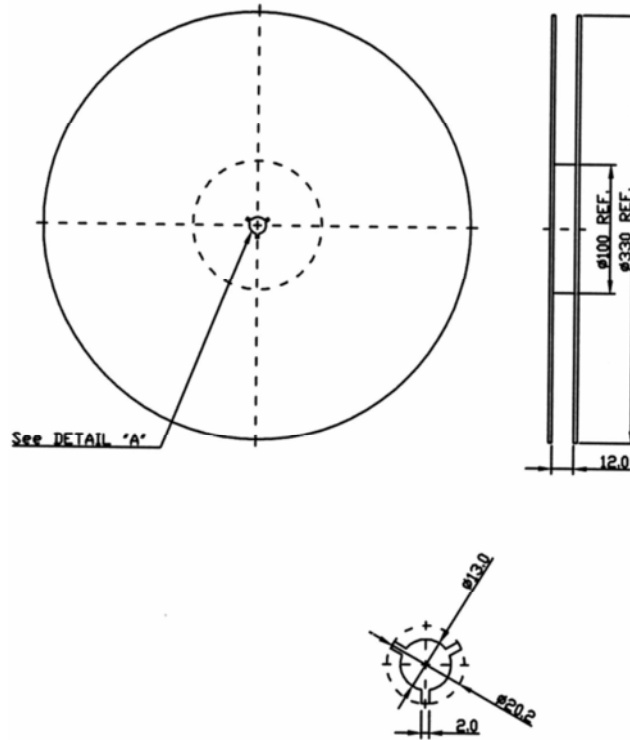


SAW Filter: 1237.0MHz
Part No: MP10403

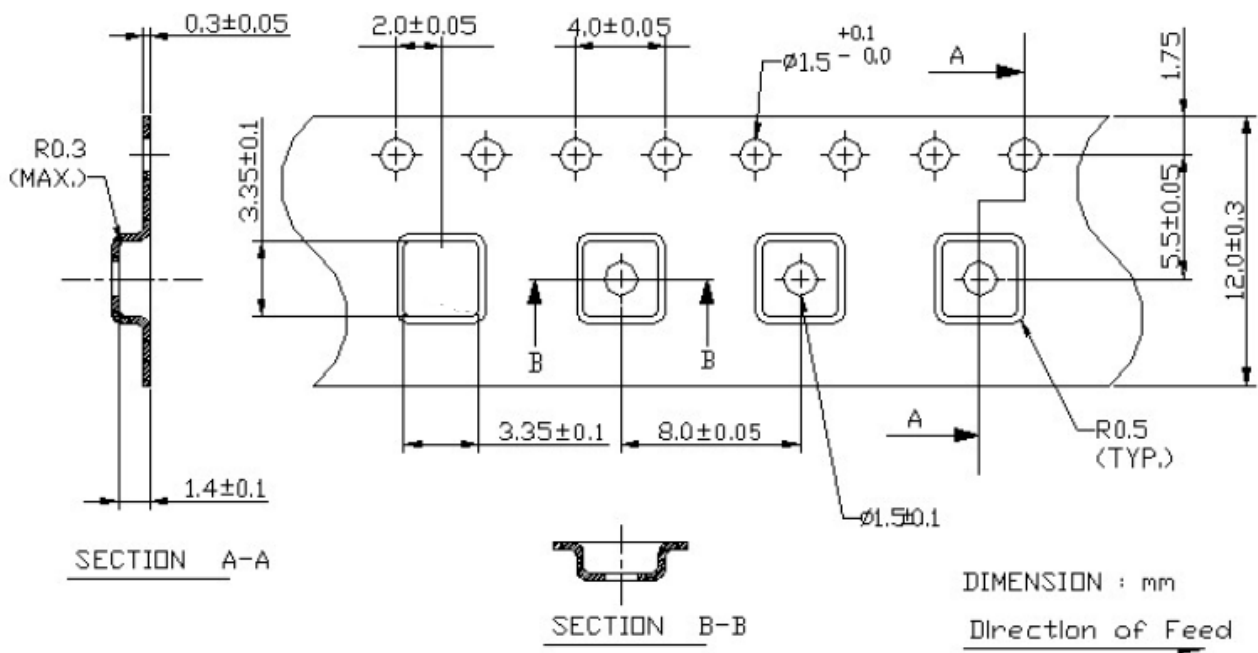
Model: TA1237LL
Rev No: 1

G. PACKING:

1. Reel Dimensions



2. Tape Dimensions



SAW Filter: 1237.0MHz
Part No: MP10403

Model: TA1237LL
Rev No: 1

H. RECOMMENDED REFLOW PROFILE:

