

SAW Filter 915.0MHz

Model: TA1719A

Part No: MP08159

Rev No: 1

A. MAXIMUM RATING:

Electrostatic Sensitive Device (ESD)

1. Input Power Level: 15dBm
2. DC Voltage: 5V
3. Operating Temperature: -40°C to +85°C
4. Storage Temperature: -40°C to +85°C

B. ELECTRICAL CHARACTERISTICS:

Item	Unit	Min.	Typ.	Max.
Center frequency Fc	MHz	-	915	-
Insertion Loss (902 ~ 928MHz) IL	dB	-	2.7	3.5
Amplitude Ripple (902 ~ 928MHz)	dB	-	0.6	2.0
VSWR (902 ~ 928MHz)	-	-	1.9	2.4
Attenuation (Reference level from 0dB)				
DC ~ 800MHz	dB	50	64	-
800 ~ 880MHz	dB	37	43	-
960 ~ 1080MHz	dB	32	45	-
1080 ~ 1500MHz	dB	40	45	-
1500 ~ 2000MHz	dB	10	16	-
Temperature Coefficient of Frequency	ppm/°C	-	-36	-

SAW Filter 915.0MHz

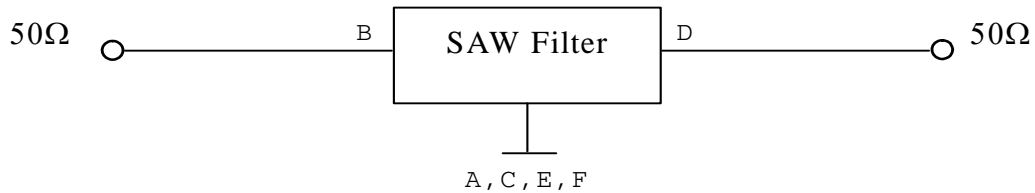
Model: TA1719A

Part No: MP08159

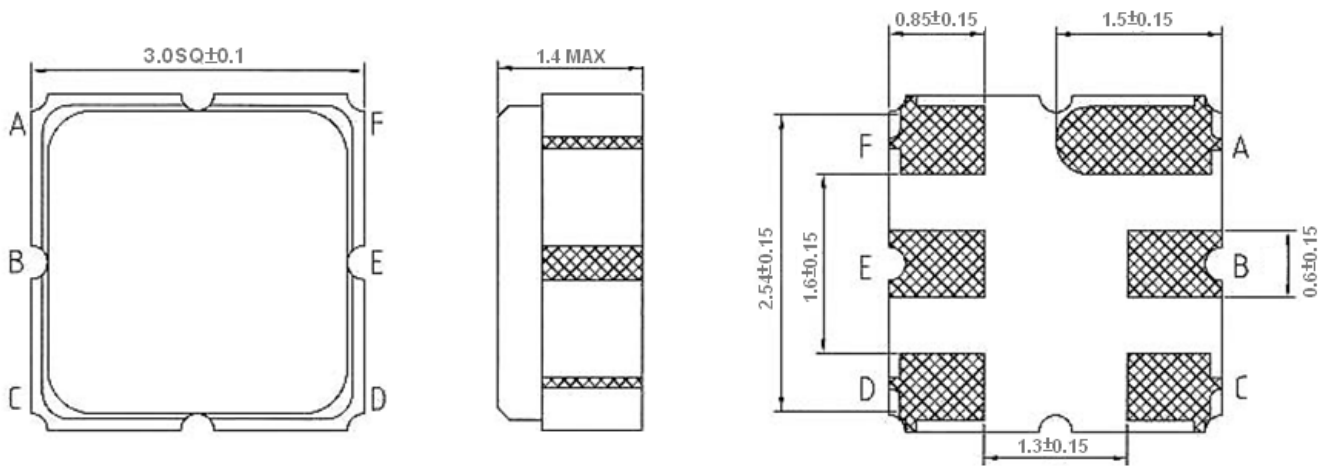
Rev No: 1

C. MEASUREMENT CIRCUIT:

HP Network analyzer



D. OUTLINE DRAWING:



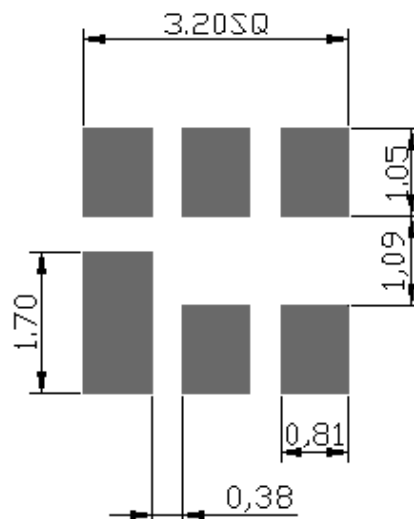
B: Input

D: Output

A, C, E, F: Ground

Unit: mm

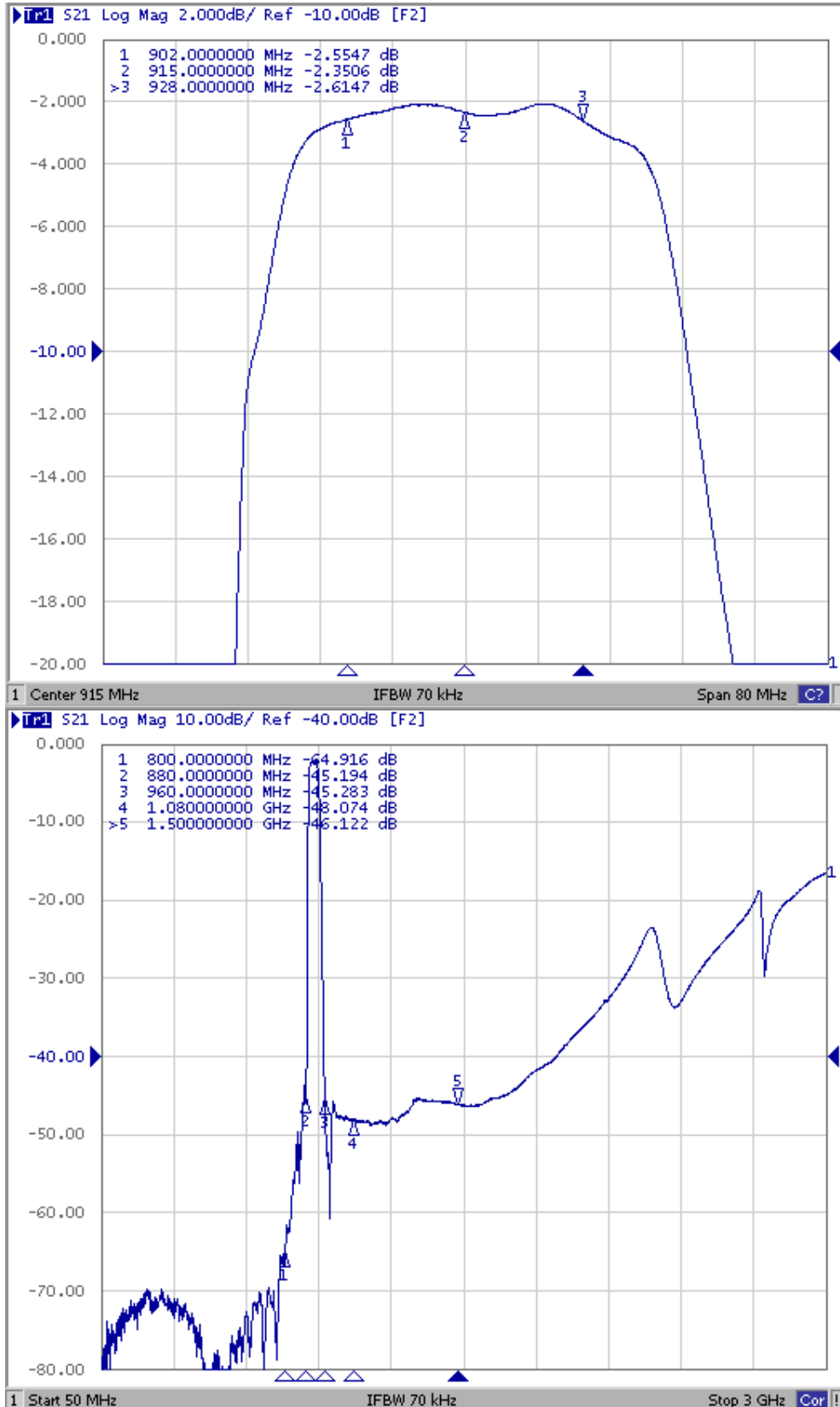
E. PCB FOOTPRINT:



SAW Filter 915.0MHz
Part No: MP08159

Model: TA1719A
Rev No: 1

F. FREQUENCY CHARACTERISTICS:

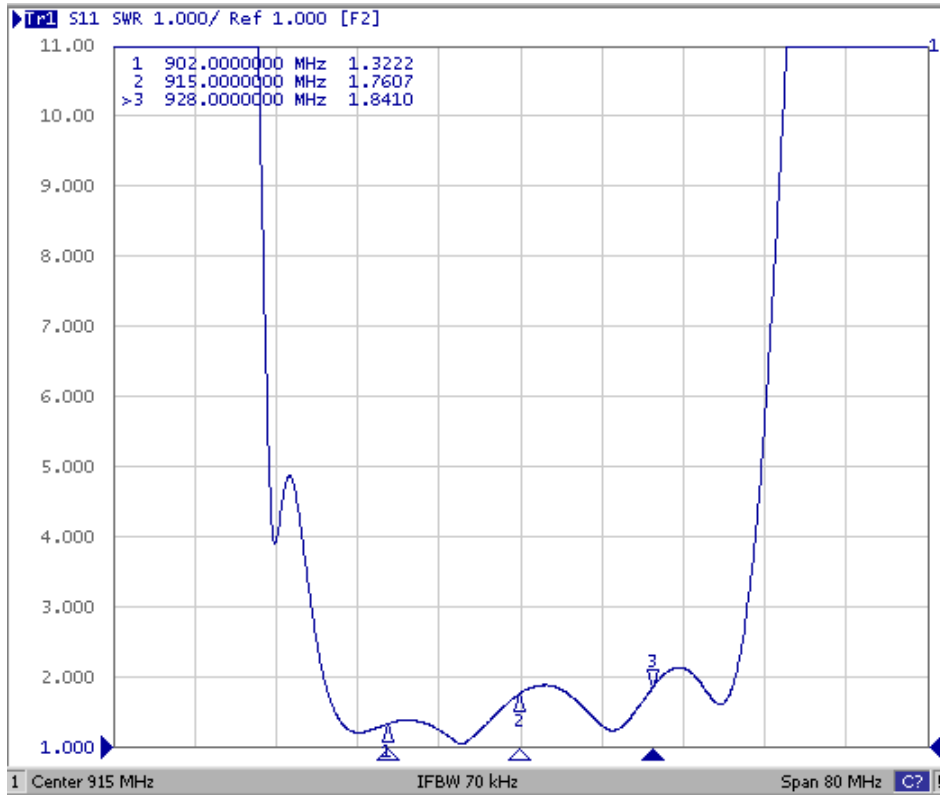


SAW Filter 915.0MHz
Part No: MP08159

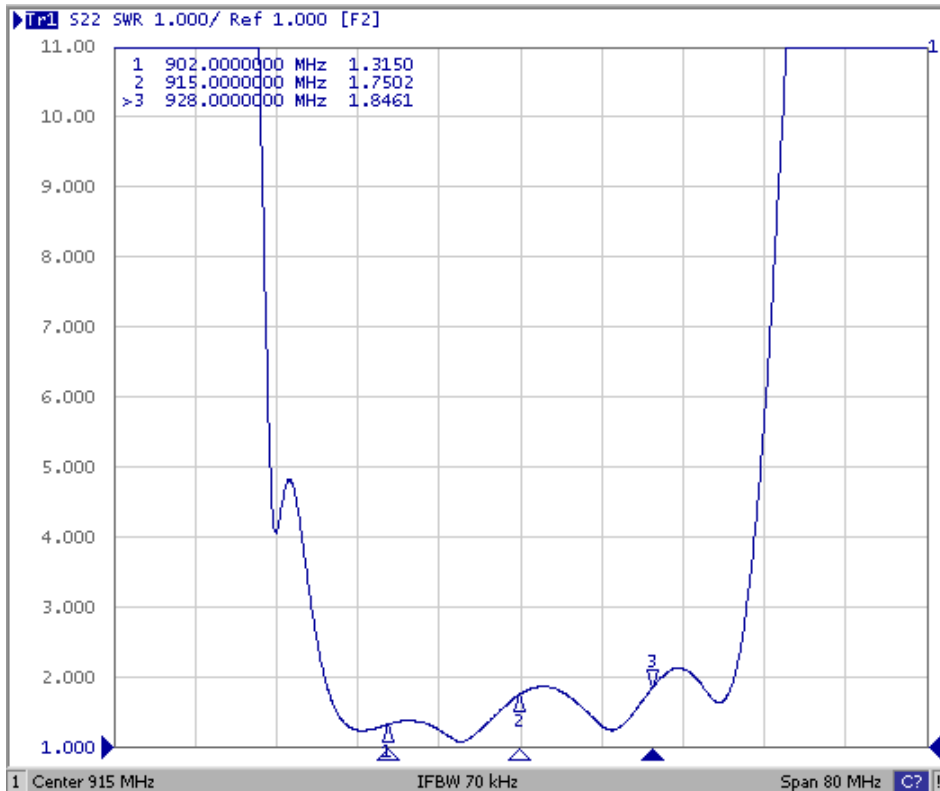
Model: TA1719A
Rev No: 1

Reflection Functions:

S11



S22

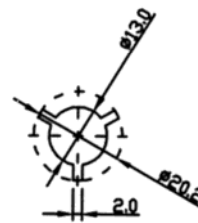
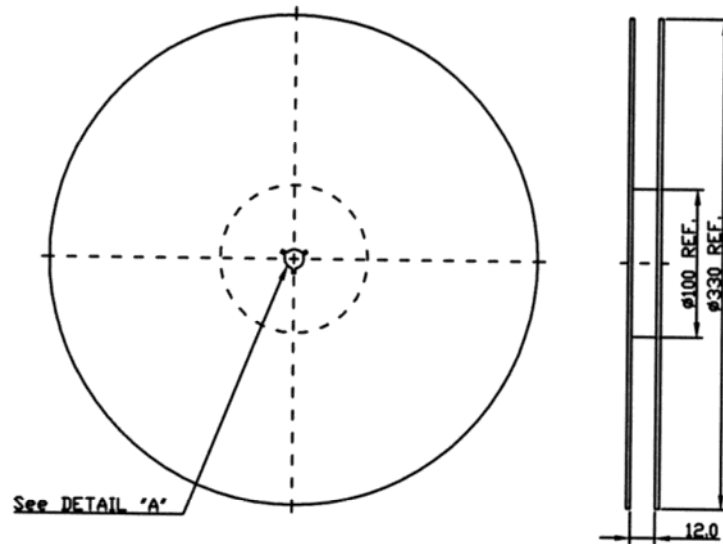


SAW Filter 915.0MHz
Part No: MP08159

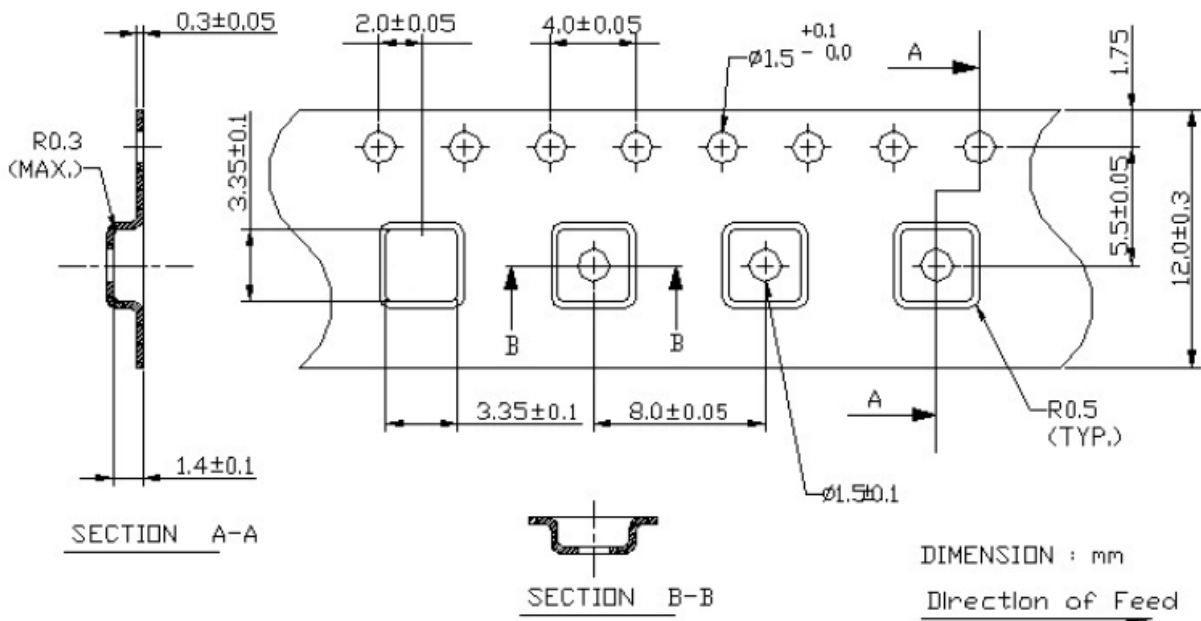
Model: TA1719A
Rev No: 1

G. PACKING:

1. Reel Dimension



2. Tape Dimension



SAW Filter 915.0MHz
Part No: MP08159

Model: TA1719A
Rev No: 1

H. RECOMMENDED REFLOW PROFILE:

