

SAW Filter 173.910MHz
Part No: MP03497

Model: TB0835A
Rev No: 1

A. MAXIMUM RATING:

1. Operating Temperature: -20°C ~ +70°C
2. Storage Temperature: -40°C ~ +85°C
3. Input power: 10dBm

B. CHARACTERISTICS:

Ambient Temperature: 25°C

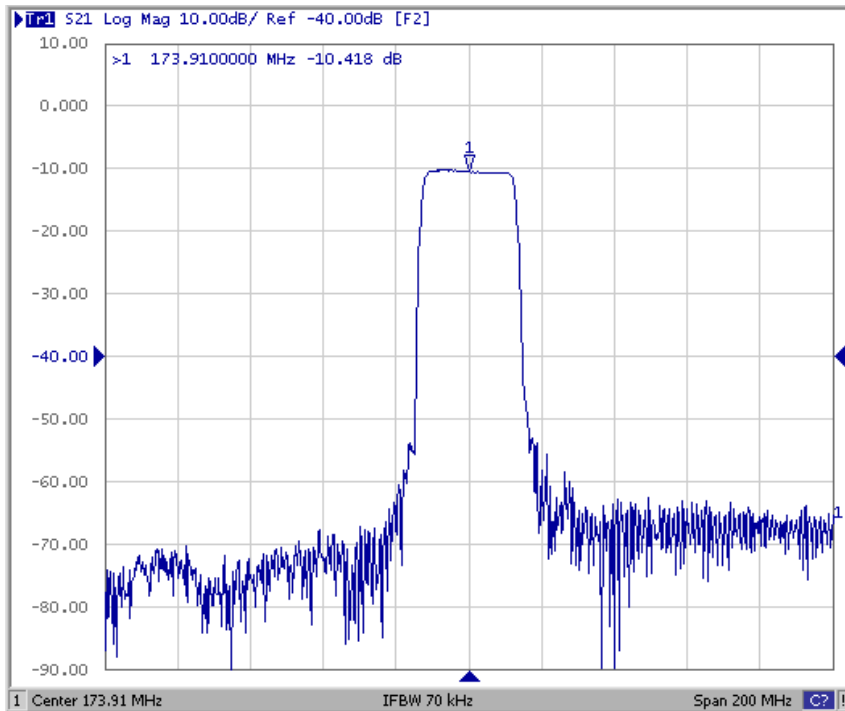
Characteristics	Value			Note
	Min.	Typ.	Max.	
Center frequency Fc MHz	-	173.910	-	-
Minimum Insertion loss IL dB	-	10.0	13	-
1dB BW MHz	-	23.8	-	-
Passband Ripple (Fc ± 10MHz) dB	-	0.6	1.5	-
Attenuation (Reference to Minimum Insertion loss)				
100 ~ 153.91MHz dB	45	53	-	-
208.91 ~ 350MHz dB	40	48	-	-
Temp Coefficient ppm/K	-	-94	-	-
Matching: 1. The input of the filter will be matched to 50Ω 2. The output of the filter will be matched to 50Ω				

SAW Filter 173.910MHz
Part No: MP03497

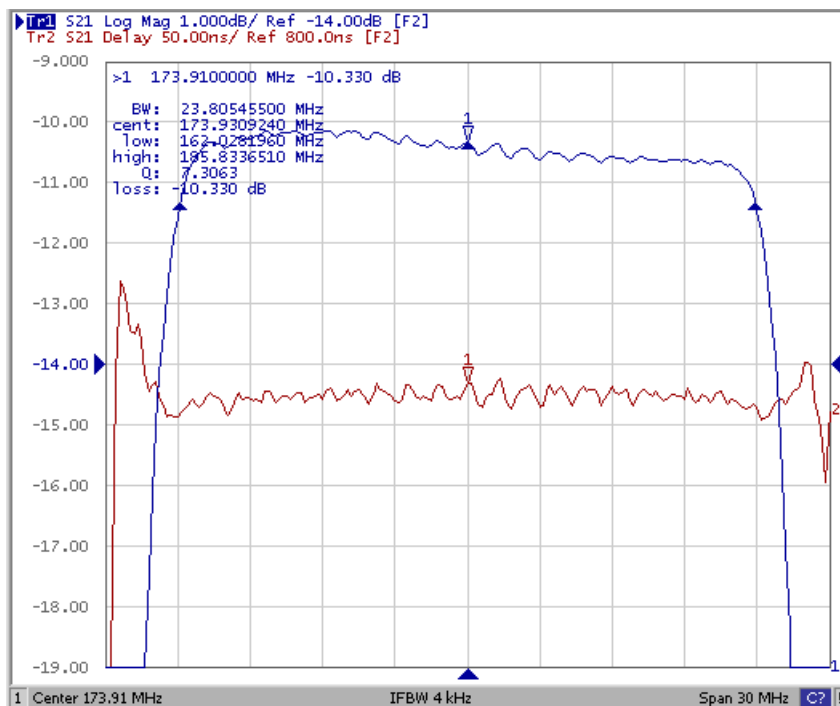
Model: TB0835A
Rev No: 1

C. FREQUENCY CHARACTERISTICS:

1. S21 Response: (span: 200MHz)



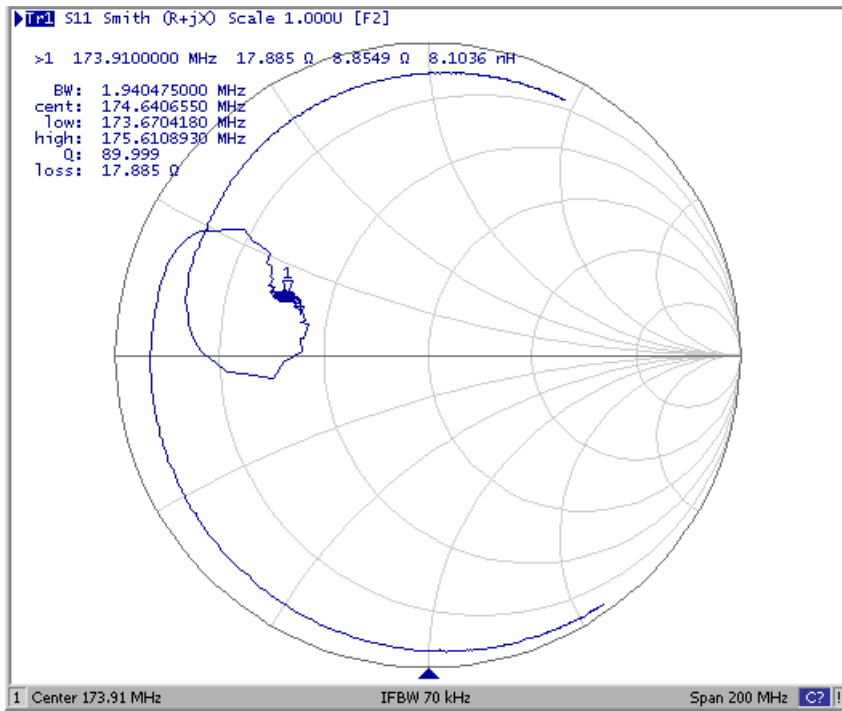
2. Group-Delay Ripple: (span: 30MHz)



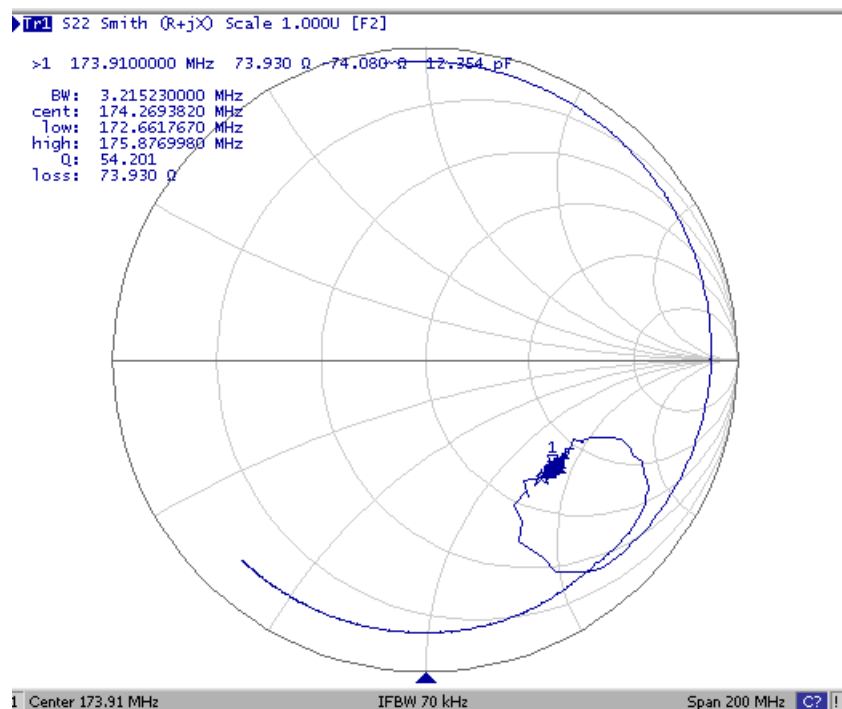
SAW Filter 173.910MHz
Part No: MP03497

Model: TB0835A
Rev No: 1

3. S11 Smith Chart: (span: 200MHz)



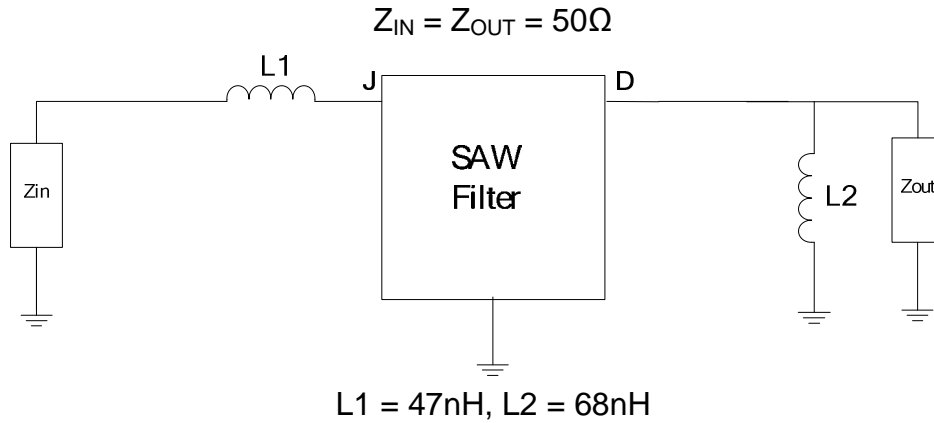
4. S22 Smith Chart (span: 200MHz)



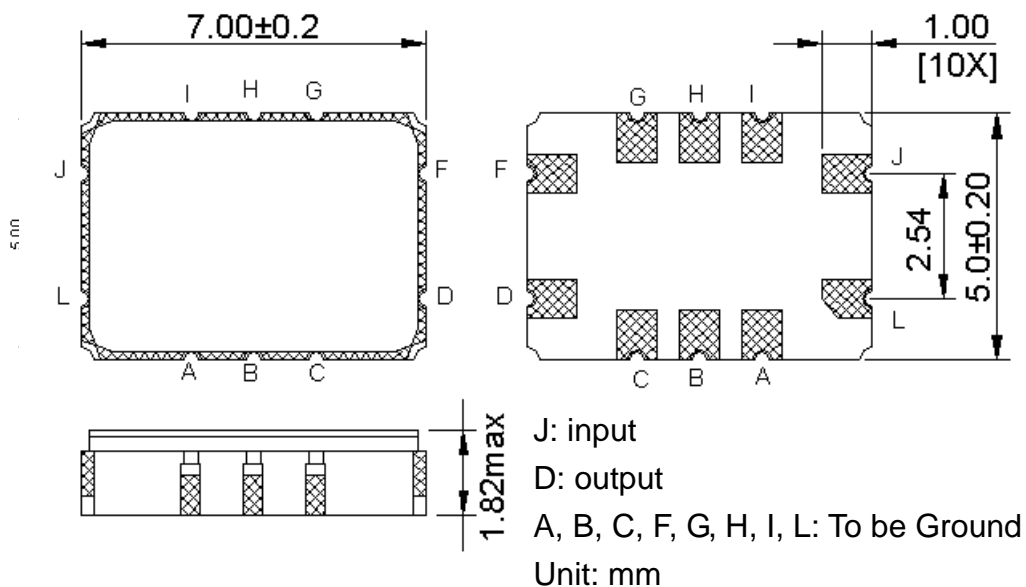
SAW Filter 173.910MHz
Part No: MP03497

Model: TB0835A
Rev No: 1

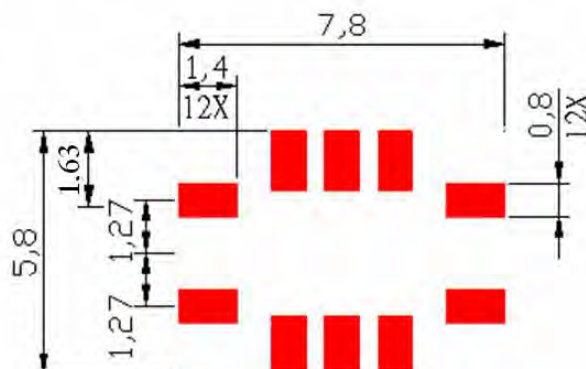
E. MEASUREMENT CIRCUIT:



F. OUTLINE DRAWING:



G. PCB FOOTPRINT:

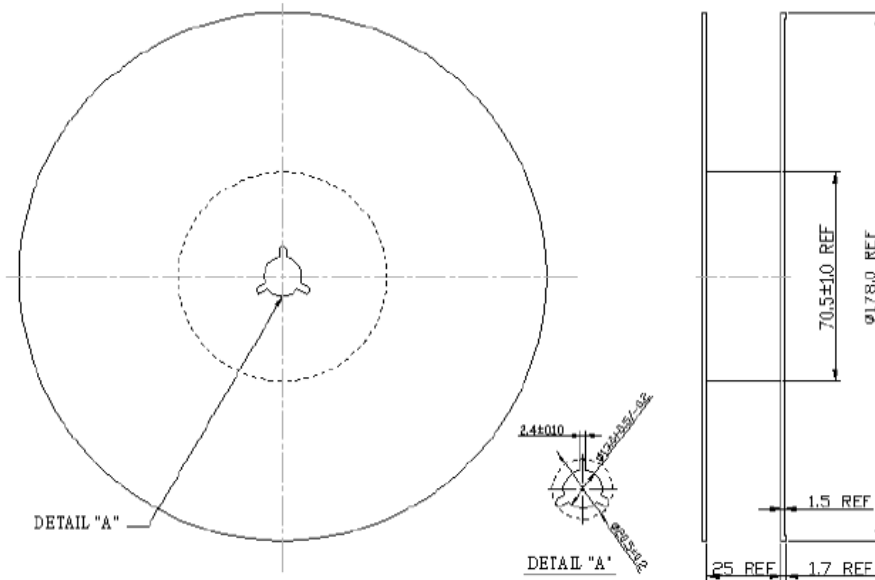


SAW Filter 173.910MHz
Part No: MP03497

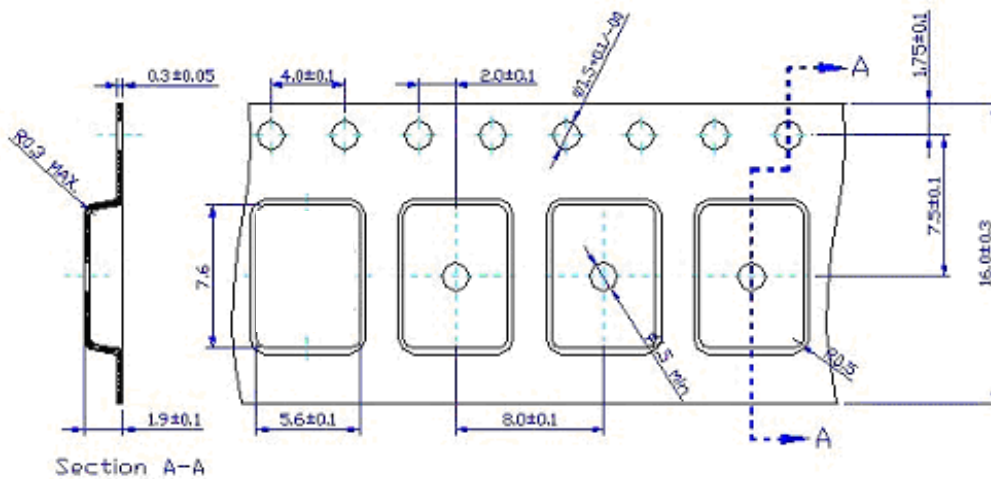
Model: TB0835A
Rev No: 1

H. PACKING:

1. REEL DIMENSION



2. TAPE DIMENSION



SAW Filter 173.910MHz
Part No: MP03497

Model: TB0835A
Rev No: 1

I. RECOMMENDED REFLOW PROFILE:

