

SAW Filter 133.960MHz
Part No: MP03443

Model: TB0725A
Rev No: 1

A. MAXIMUM RATING:

1. Input Power Level: 10dBm
2. Operating Temperature: -20°C to +80°C
3. Storage Temperature: -40°C to +85°C

B. CHARACTERISTICS:

Ambient Temperature: 25°C

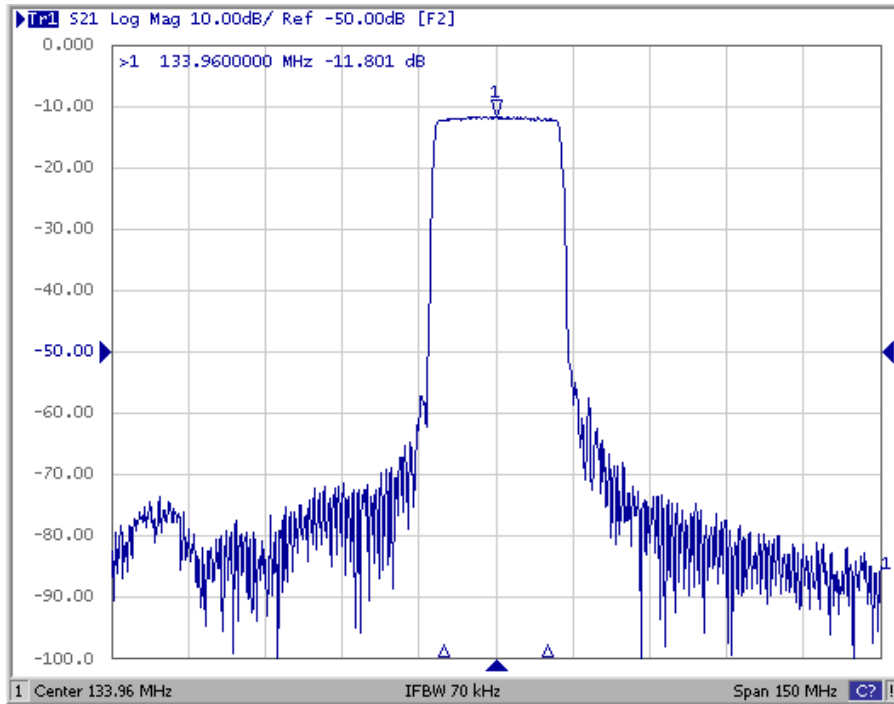
Characteristics	Value			Note
	Min.	Typ.	Max.	
Center frequency Fc MHz	-	133.96	-	-
Minimum Insertion loss IL dB	-	11.8	15.0	-
1dB BW MHz	20.0	23.5	-	
45dB BW MHz	-	28.3	31.0	
Passband Ripple (Fc ± 9.5MHz) dB	-	0.6	1.0	-
Attenuation (Reference to Minimum Insertion loss)				
10 ~ 103MHz dB	50	53	-	-
103 ~ 118MHz dB	40	52	-	
150 ~ 163MHz dB	40	47	-	-
163 ~ 240MHz dB	50	58		
Temp Coefficient ppm/K	-	-94	-	-
Matching: 1. The input of the filter will be matched to 50Ω 2. The output of the filter will be matched to 50Ω				

SAW Filter 133.960MHz
Part No: MP03443

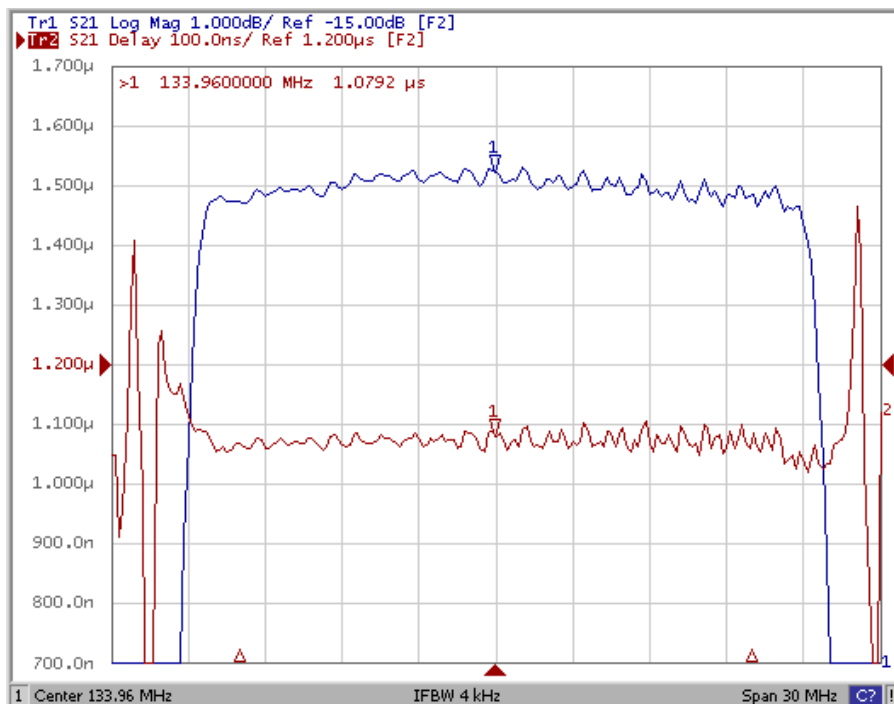
Model: TB0725A
Rev No: 1

C. FREQUENCY CHARACTERISTICS:

1. Wide band Response: (span 150MHz)



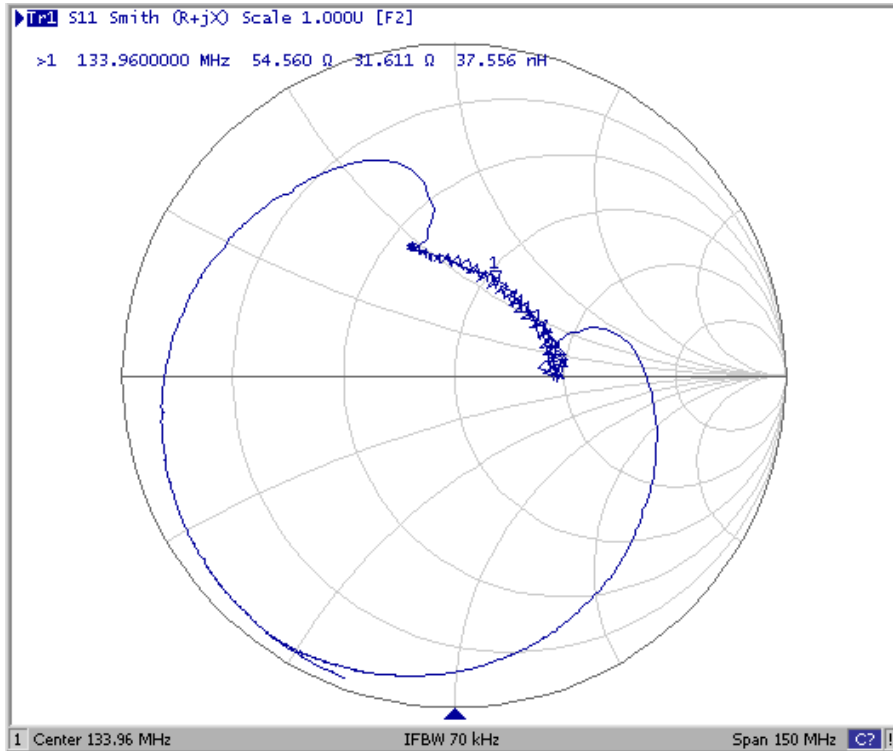
2. Pass band Response and Group Delay Variation: (span 30MHz)



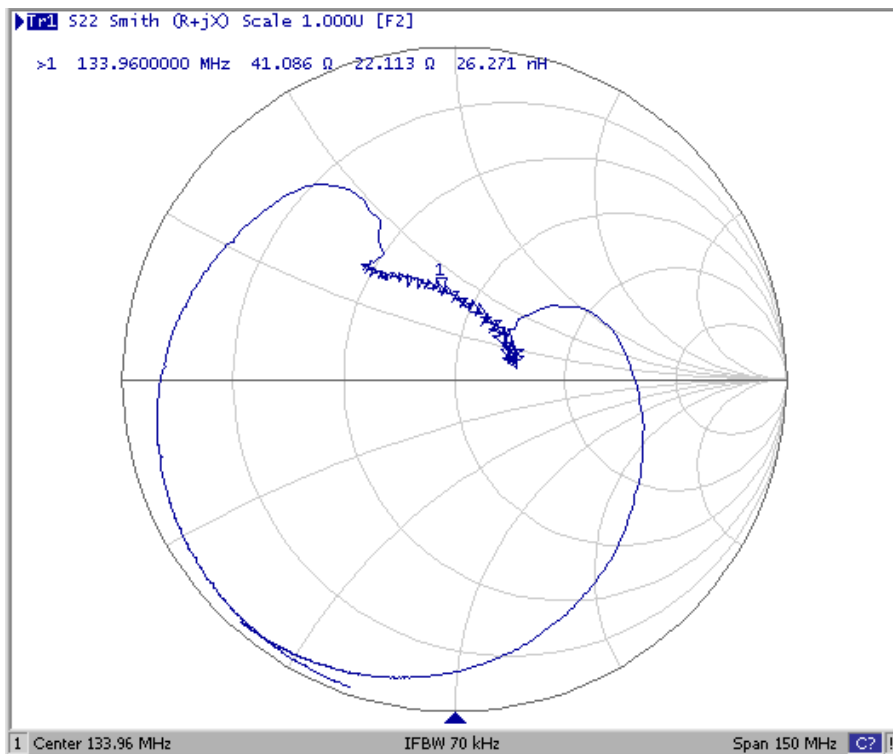
SAW Filter 133.960MHz
Part No: MP03443

Model: TB0725A
Rev No: 1

3. S11 Smith-Chart: (span 150MHz)



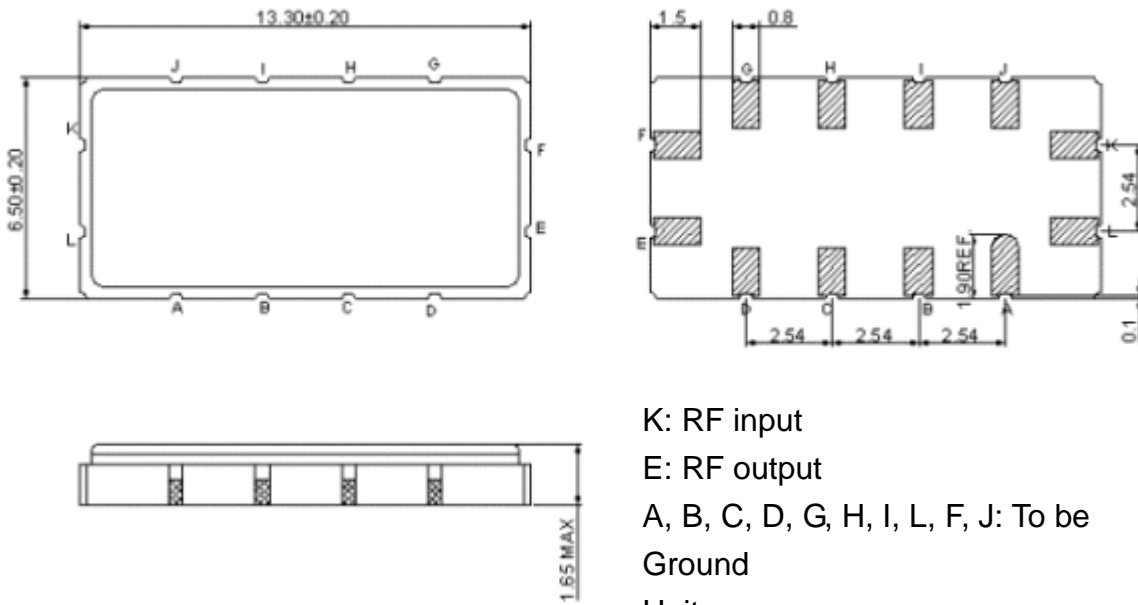
4. S22 Smith-Chart: (span 150MHz)



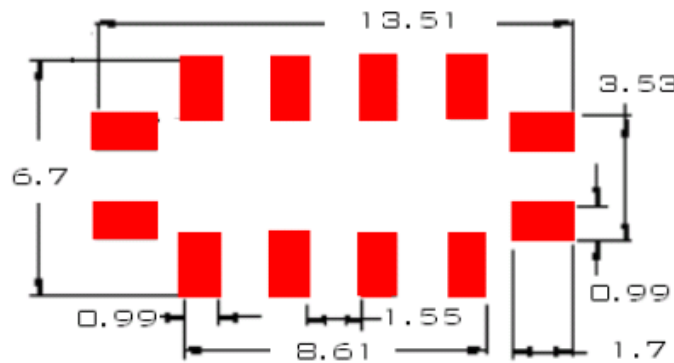
SAW Filter 133.960MHz
Part No: MP03443

Model: TB0725A
Rev No: 1

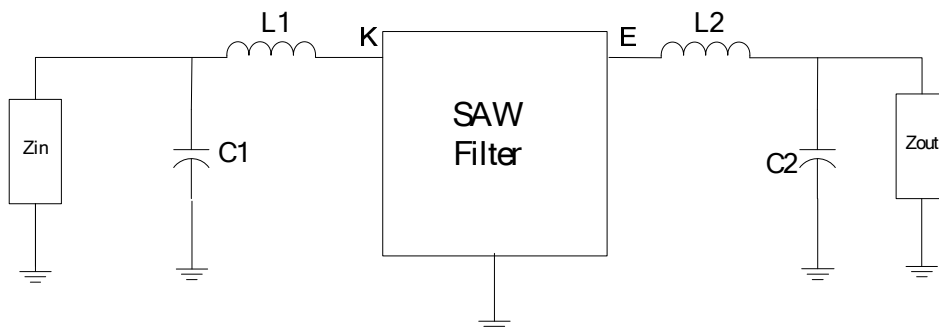
D. OUTLINE DRAWING:



E. PCB FOOTPRINT:



F. MATCHING CIRCUIT:



$$Z_{IN} = Z_{OUT} = 50\Omega$$

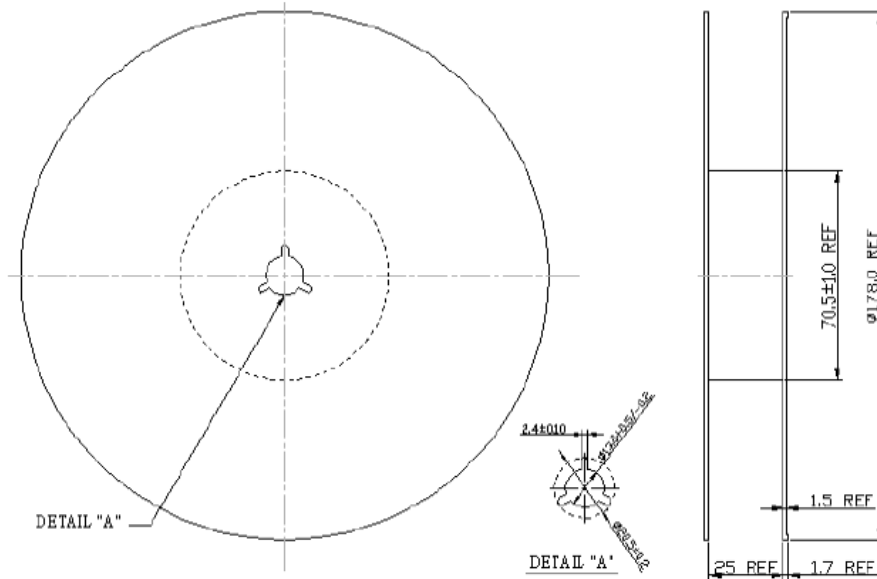
$$L1 = 68\text{nH}, C1 = 33\text{pF}, L2 = 68\text{nH}, C2 = 36\text{pF}$$

SAW Filter 133.960MHz
Part No: MP03443

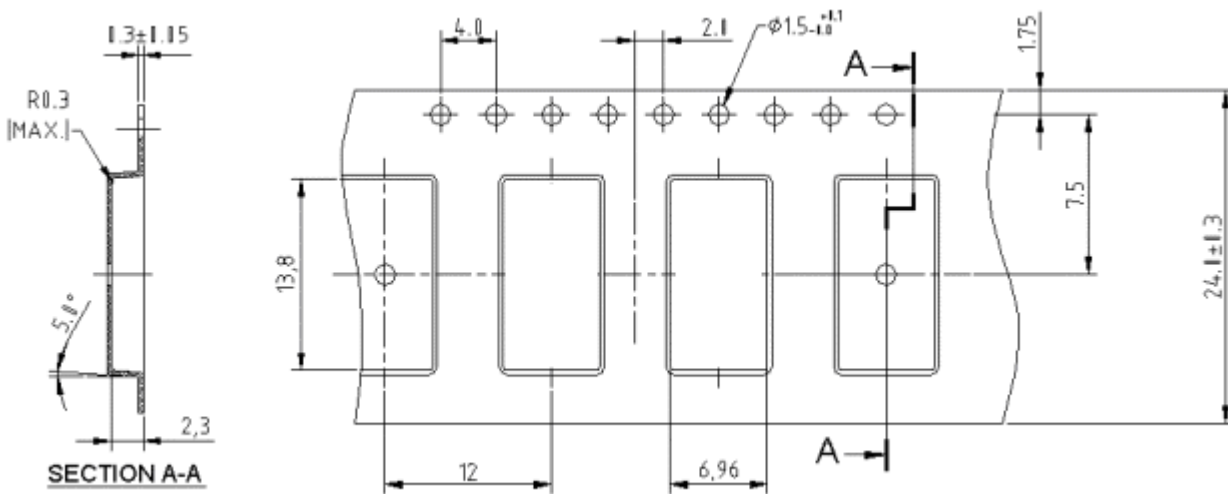
Model: TB0725A
Rev No: 1

G. PACKING:

1. REEL DIMENSION:
- 2.



2. TAPE DIMENSION:



SAW Filter 133.960MHz
Part No: MP03443

Model: TB0725A
Rev No: 1

H. RECOMMENDED REFLOW PROFILE:

