

---

**SAW Filter 70.0MHz**

**Model: TB0644A**

**Part No: MP01297**

**REV. NO.: 1**

---

**A. MAXIMUM RATING:**

1. Operating temperature range: -30°C to 85°C
2. Storage temperature range: -40°C to 85°C

**B. CHARACTERISTICS:**

Item	Unit	Min.	Typ.	Max.
Center frequency, <b>F<sub>c</sub></b>	MHz	-	70	-
Insertion Loss, <b>IL</b>	dB	-	5.4	7.0
1dB Passband width	kHz		173	-
3dB Passband width	kHz	100	270	-
10dB Passband width	kHz		430	-
20dB Passband width	kHz		500	-
30dB Passband width	kHz		600	-
Amplitude Ripple <b>F<sub>c</sub>±50kHz</b>	P-P dB	-	0.4	1.0
Group delay ripple <b>F<sub>c</sub>±50kHz</b>	nsec	-	0.1	0.2
Temperature Coefficient	ppm/°C <sup>2</sup>	-0.036		
Source Impedance (Balanced)	Ohm			
Load Impedance (Balanced)	Ohm			

**SAW Filter 70.0MHz**  
**Part No: MP01297**

**Model: TB0644A**  
**REV. NO.: 1**

### C. FREQUENCY CHARACTERISTICS:

#### 1. S21 Response

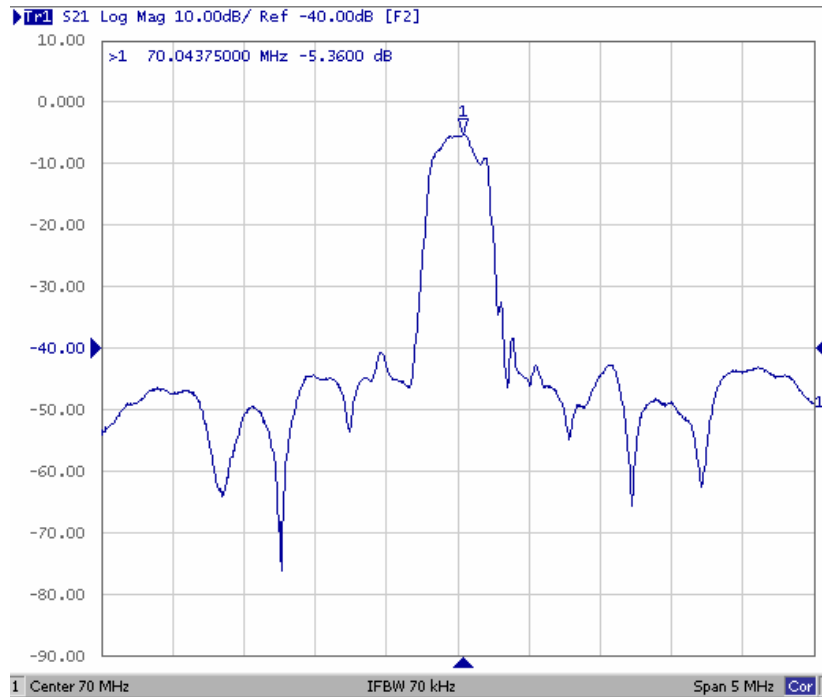


Fig1. Horizontal: 0.5MHz/Div Vertical: 10dB/Div

#### 2. S21 Response (Group delay ripple of Passband)

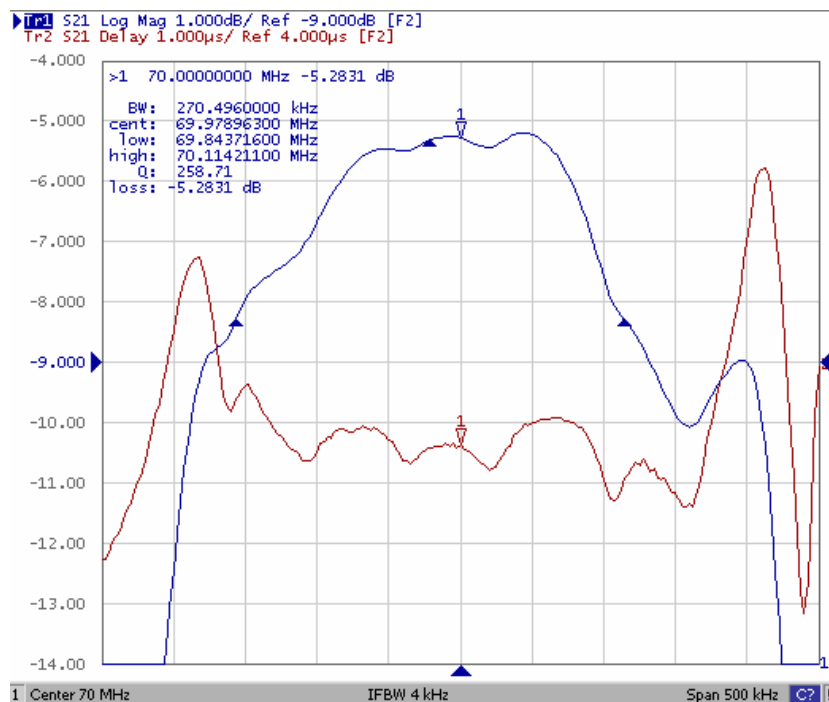


Fig2. Horizontal: 50kHz/Div Vertical: 1dB/Div Vertical: 1000ns/Div

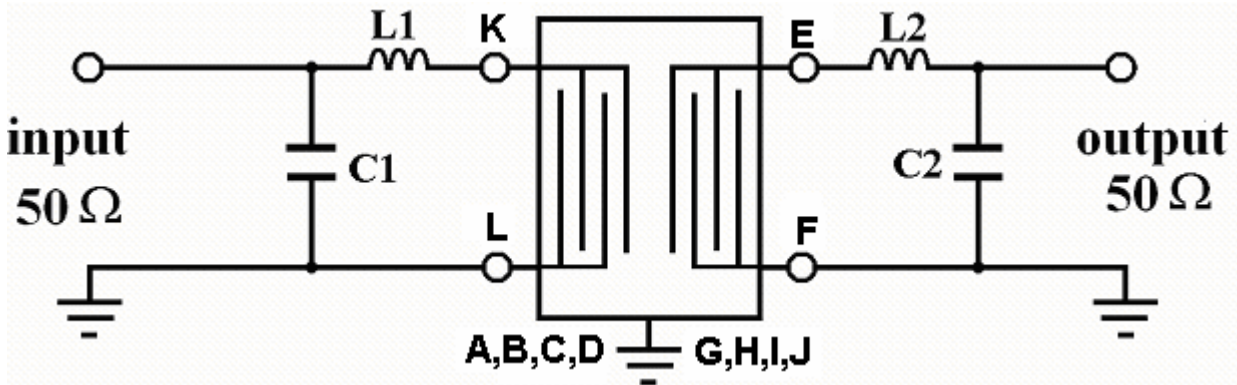
**SAW Filter 70.0MHz**

**Model: TB0644A**

Part No: **MP01297**

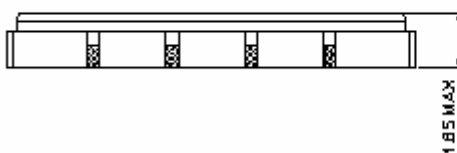
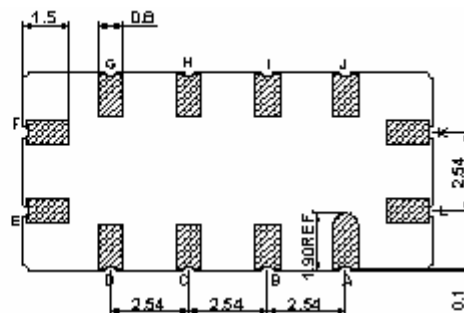
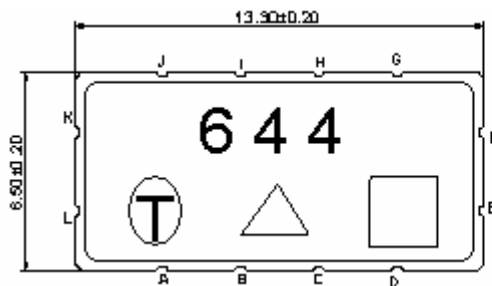
REV. NO.: 1

**D. MATCHING CIRCUIT:**



L1=377nH C1=62pF L2=317nH C2=68pF

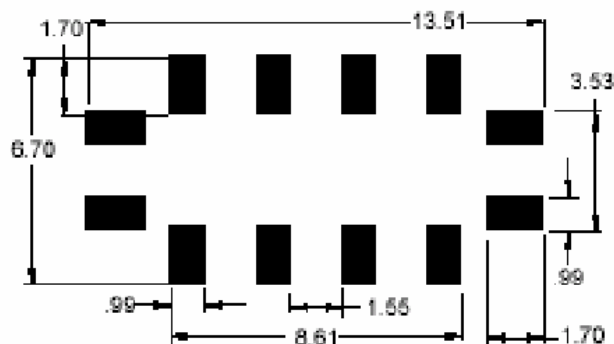
**E. OUTLINE DRAWING:**



- #K : Input
- #L : Input Ground
- #E : Output
- #F : Output Ground
- #A,B,C,D,G,H,I,J : Ground

Unit: mm

**F. PCB FOOTPRINT:**



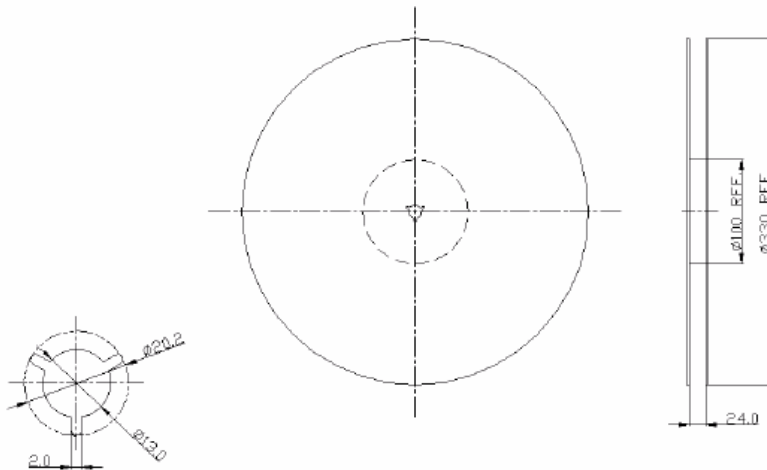
Unit: mm

**SAW Filter 70.0MHz**  
**Part No: MP01297**

**Model: TB0644A**  
**REV. NO.: 1**

**G. PACKING:**

1. REEL DIMENSION



Unit: mm

2. TAPE DIMENSION

