

SAW Filter 86.460MHz

Model: TB0407A

Part No: **MA08627**

REV. NO.: 1

A. MAXIMUM RATING:

1. Input Power Level: 10 dBm
2. DC Voltage : 5V
3. Operating Temperature: -20°C to +70°C
4. Storage Temperature: -40°C to +85°C

B. ELECTRICAL CHARACTERISTICS:

Item	Unit	Min.	Type.	Max.	Note
Center frequency, Fc	MHz	-	86.46	-	-
Minimum Insertion loss IL	dB	-	2.8	5.0	-
Pass band ripple Fc±13 kHz	dB	-	0.1	2	-
Group Delay Variation Fc±11 kHz	µs	-	3	10	-
Relative Attenuation (relative to 0 dB)					
Fc ± 14 kHz	dB	-	0.2	3	-
Fc-1000 kHz ~ Fc- 880 kHz	dB	50	60	-	-
Fc- 880 kHz ~ Fc- 120 kHz	dB	40	55	-	-
Fc- 120 kHz ~ Fc- 60 kHz	dB	15	26	-	-
Fc+ 60 kHz ~ Fc+ 120 kHz	dB	15	26	-	-
Fc+ 120 kHz ~ Fc+1000 kHz	dB	40	55	-	-
Temperature coefficient of frequency TCf	-0.032 ppm/C ²				

Note1. Considering -6 KHz frequency shift from -20°C to +70°C

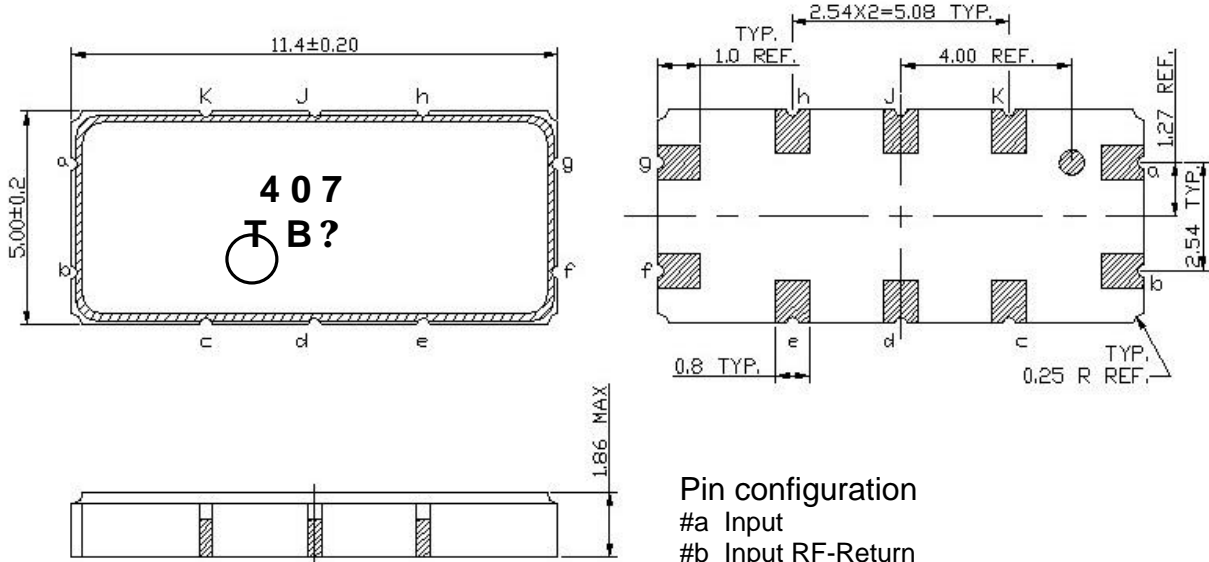
SAW Filter 86.460MHz

Model: TB0407A

Part No: **MA08627**

REV. NO.: 1

C. OUTLINE DRAWING:

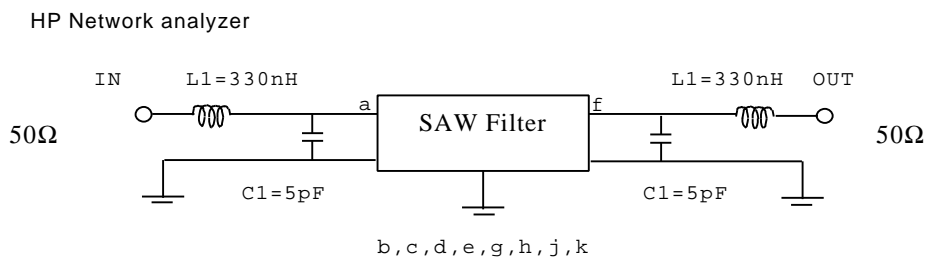


- Pin configuration
- #a Input
 - #b Input RF-Return
 - #f Output
 - #g Output RF-Return
 - #c,d,e,h,j,k To be grounded

All u

C. MEASUREMENT CIRCUIT:

50 Ohm Test circuit (single-ended / single-ended)



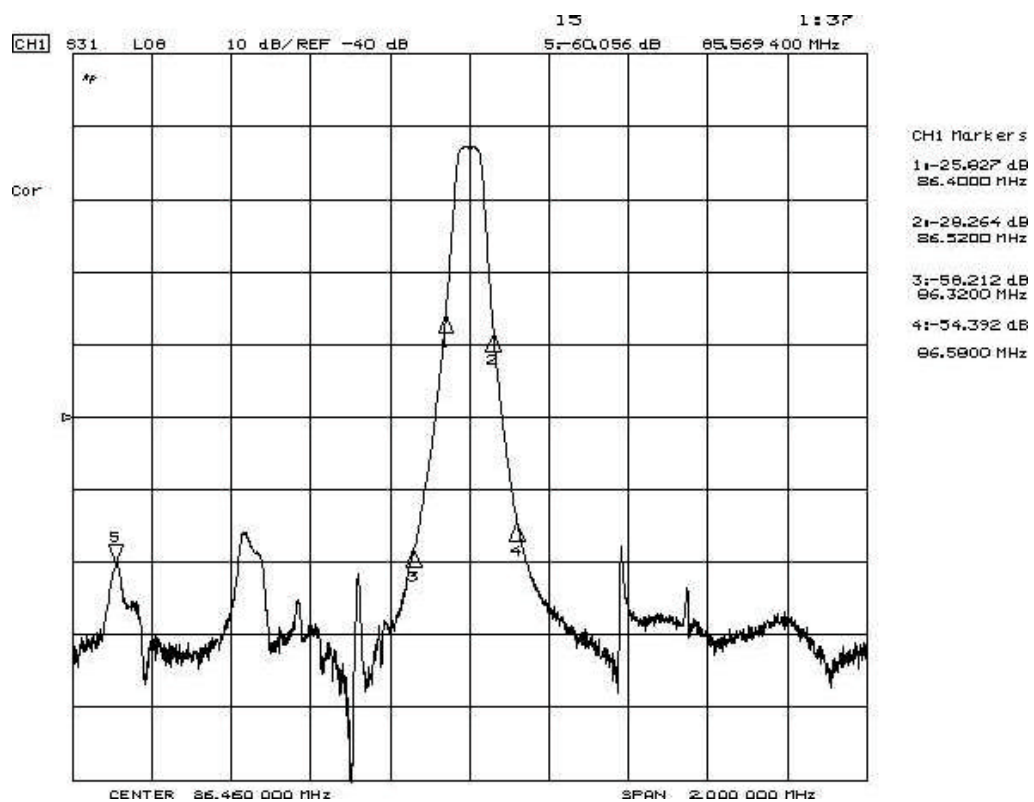
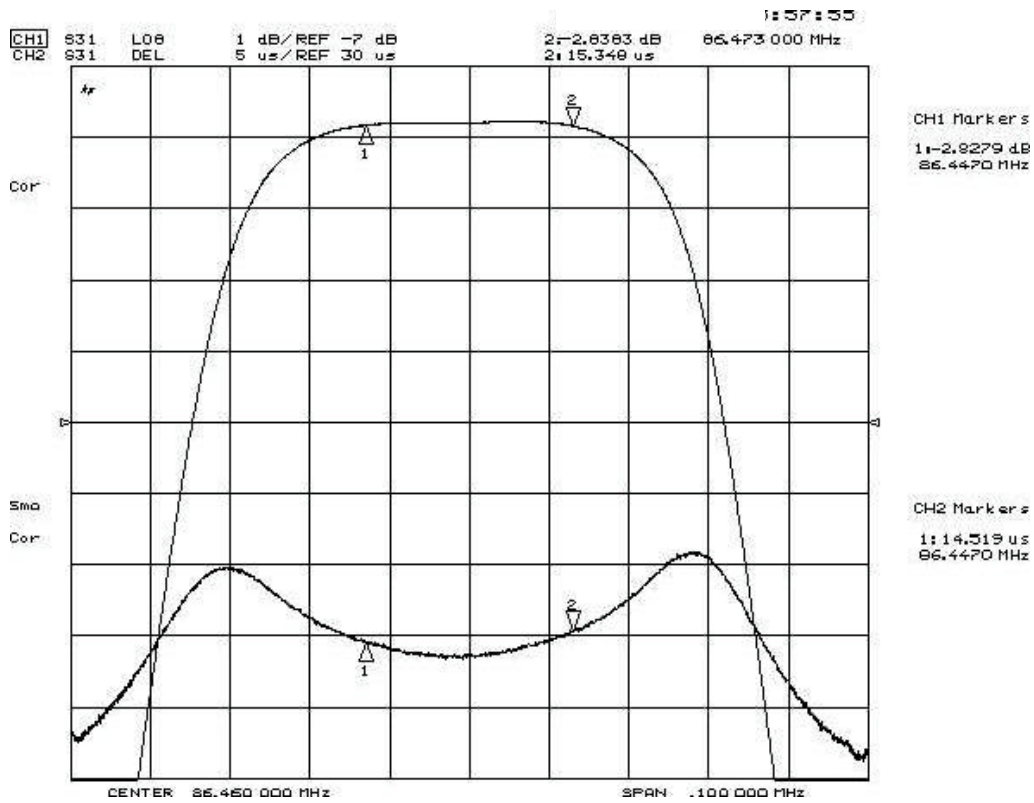
SAW Filter 86.460MHz

Model: TB0407A

Part No: MA08627

REV. NO.: 1

E. FREQUENCY CHARACTERISTICS:



SAW Filter 86.460MHz

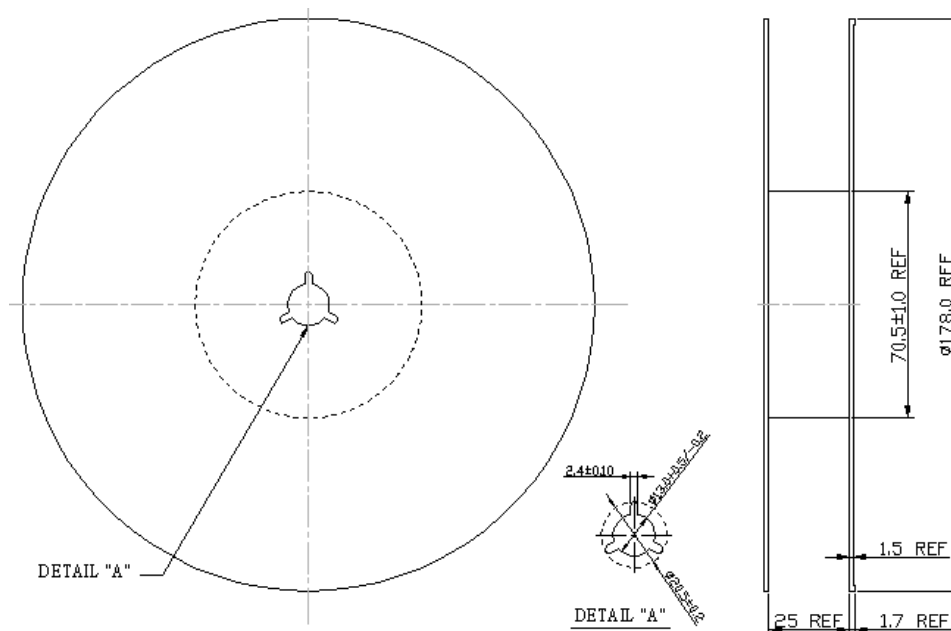
Model: TB0407A

Part No: MA08627

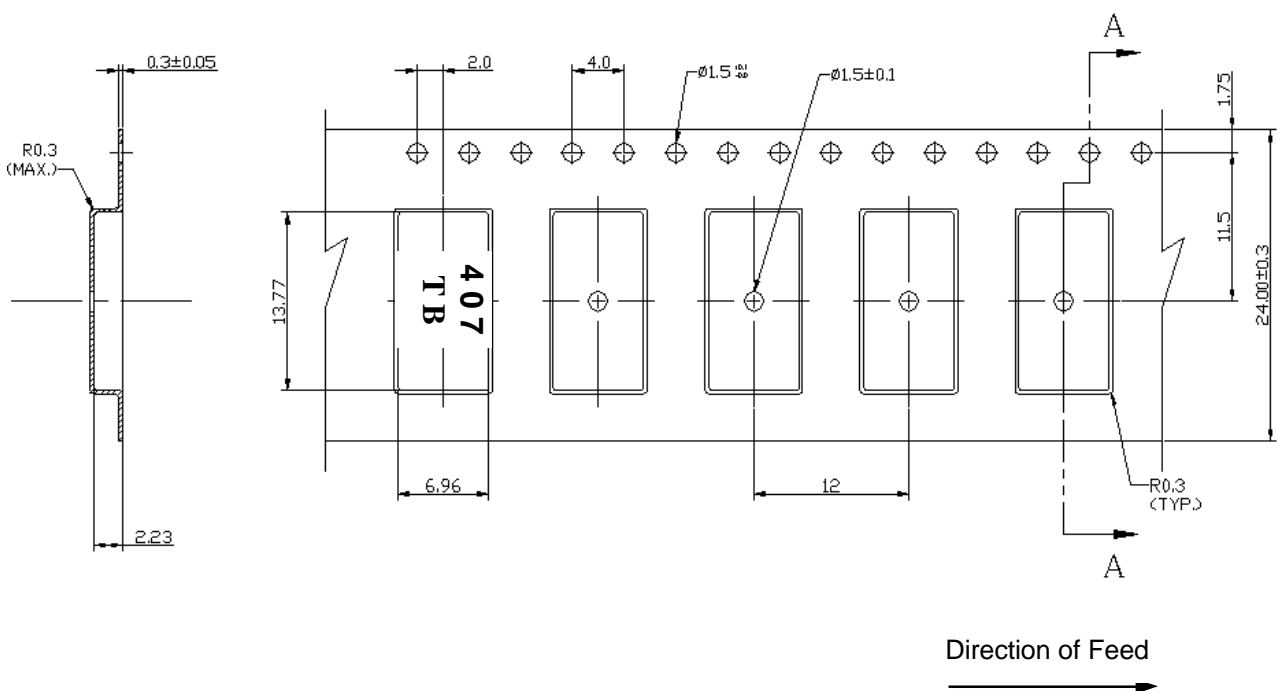
REV. NO.: 1

F. PACKING:

1. REEL DIMENSION



2. TAPE DIMENSION



SAW Filter 86.460MHz

Model: TB0407A

Part No: MA08627

REV. NO.: 1

G. RECOMMENDED REFLOW PROFILE :

