

SAW Filter 2155.0MHz
Part No: MP10050

Model: TA2043A
Rev No: 1

A. MAXIMUM RATING:

Electrostatic Sensitive Device (ESD)

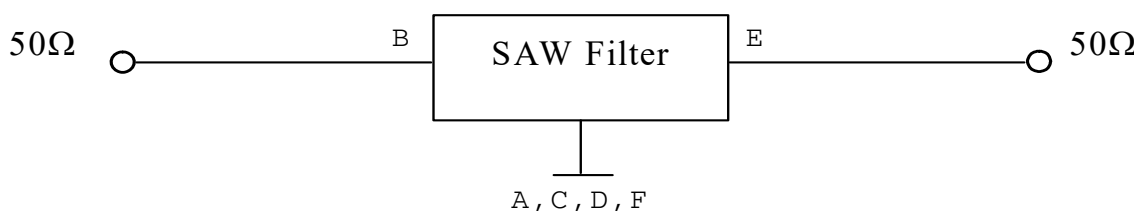
1. Input Power Level: 10dBm
2. DC voltage: 3V
3. Operating Temperature: -20°C to +70°C
4. Storage Temperature: -40°C to +85°C

B. ELECTRICAL CHARACTERISTICS:

Item	Unit	Min.	Typ.	Max.
Center Frequency	MHz	-	2155	-
Insertion loss (2110~2200MHz)	dB	-	2.7	5.0
Amplitude ripple (2110~2200MHz)	dB	-	1.8	3.0
VSWR (2110~2200MHz)	dB	-	1.8	2.5
Attenuation (Reference level from 0dB)				
10~2060MHz	dB	25	26	-
2250~3200MHz	dB	25	33	-
Temperature Coefficient of Frequency	ppm/k	-	-36	-

C. MEASUREMENT CIRCUIT:

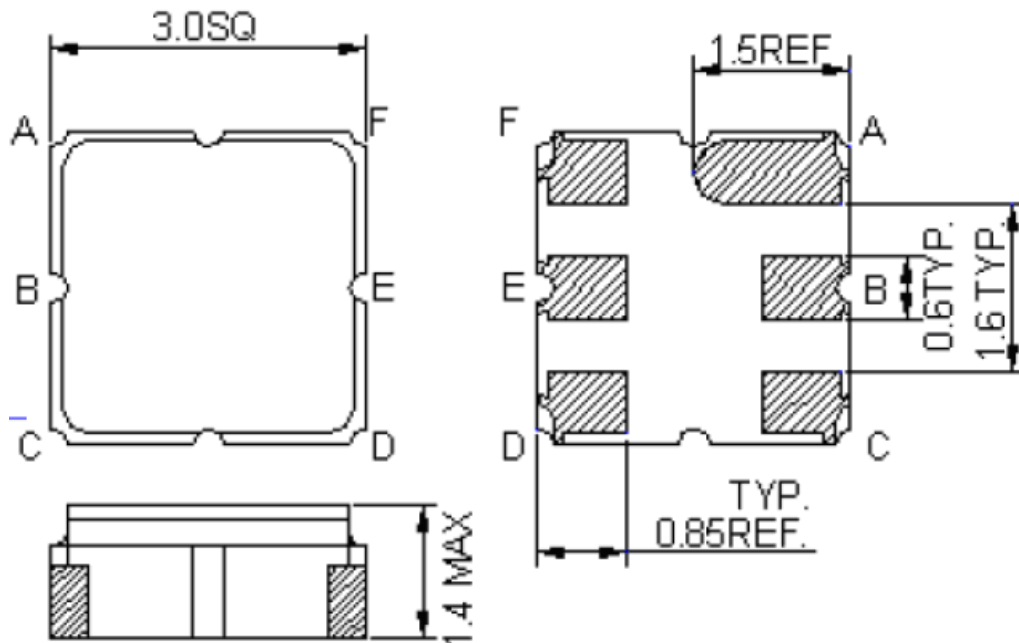
HP Network analyzer



SAW Filter 2155.0MHz
Part No: MP10050

Model: TA2043A
Rev No: 1

D. OUTLINE DRAWING:



B: Input
E: Output
A, C, D, F: Ground
Unit: mm

SAW Filter 2155.0MHz
Part No: MP10050

Model: TA2043A
Rev No: 1

E. FREQUENCY CHARACTERISTICS:

1. Span 800MHz



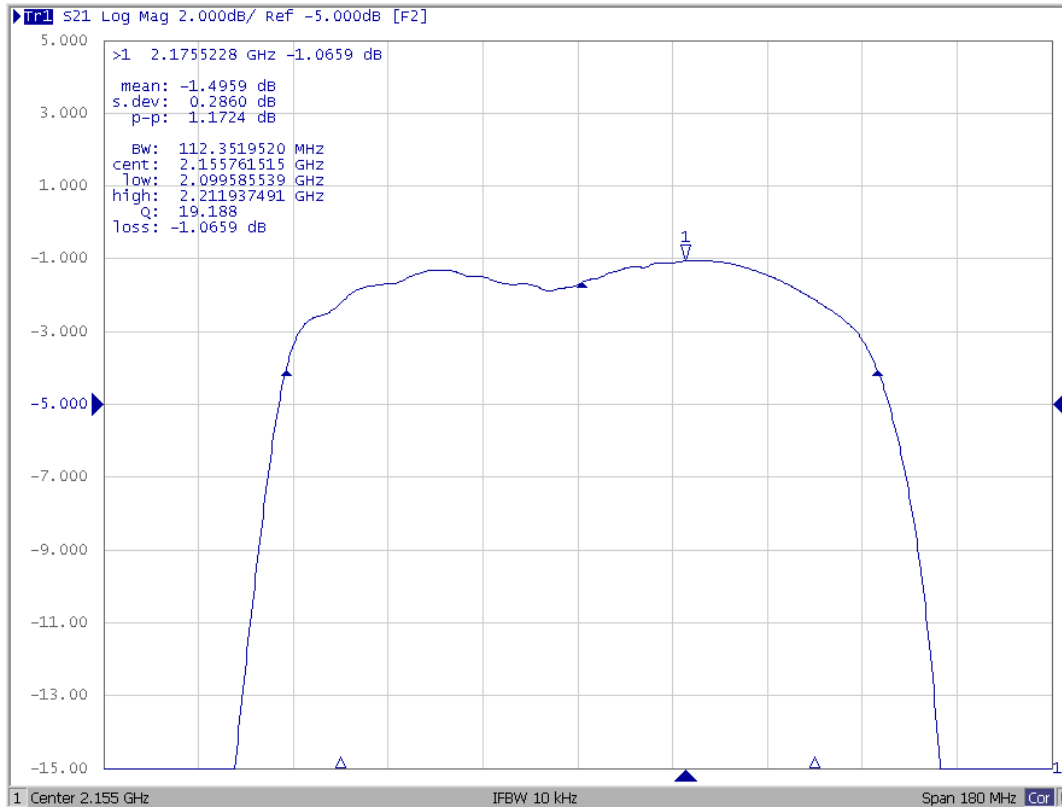
2. Span 4500MHz



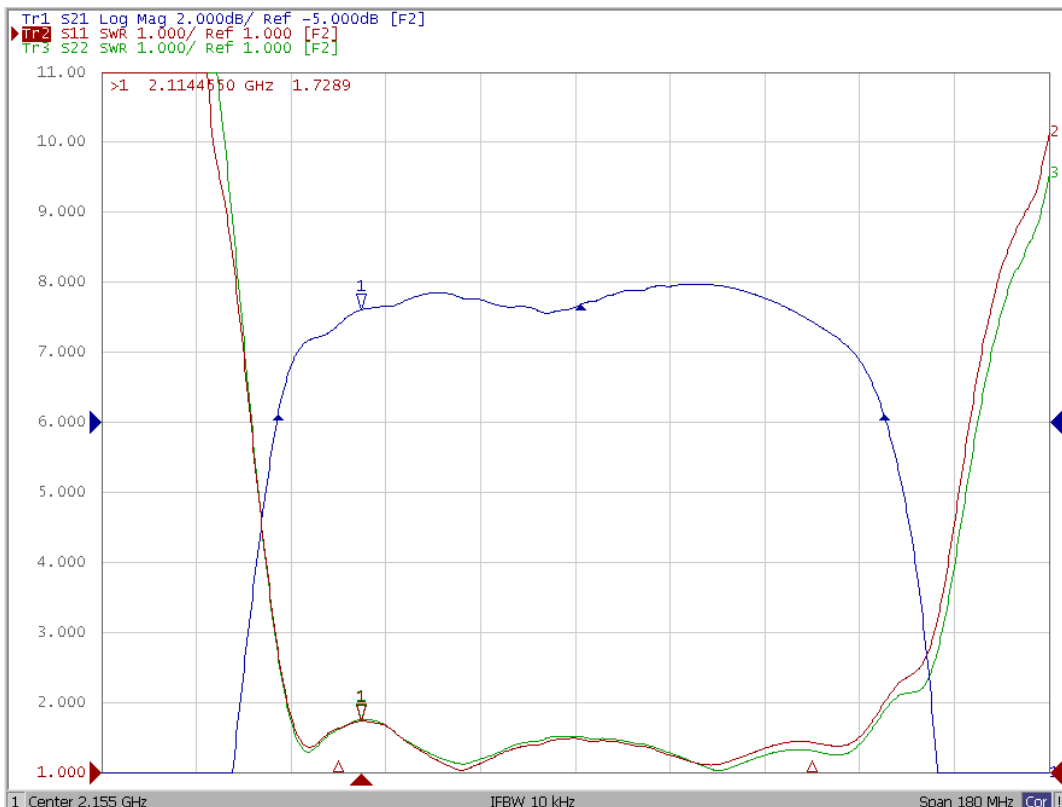
SAW Filter 2155.0MHz
Part No: MP10050

Model: TA2043A
Rev No: 1

3. Span 180MHz



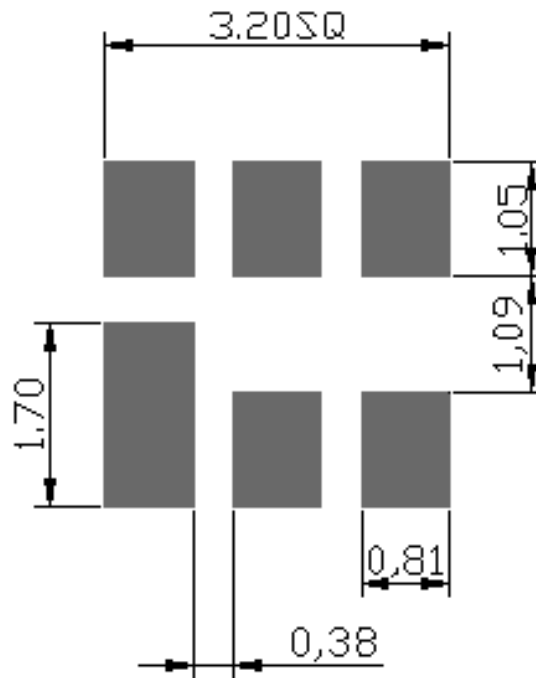
4. Return Loss (Span 180MHz)



SAW Filter 2155.0MHz
Part No: MP10050

Model: TA2043A
Rev No: 1

F. PCB FOOTPRINT:

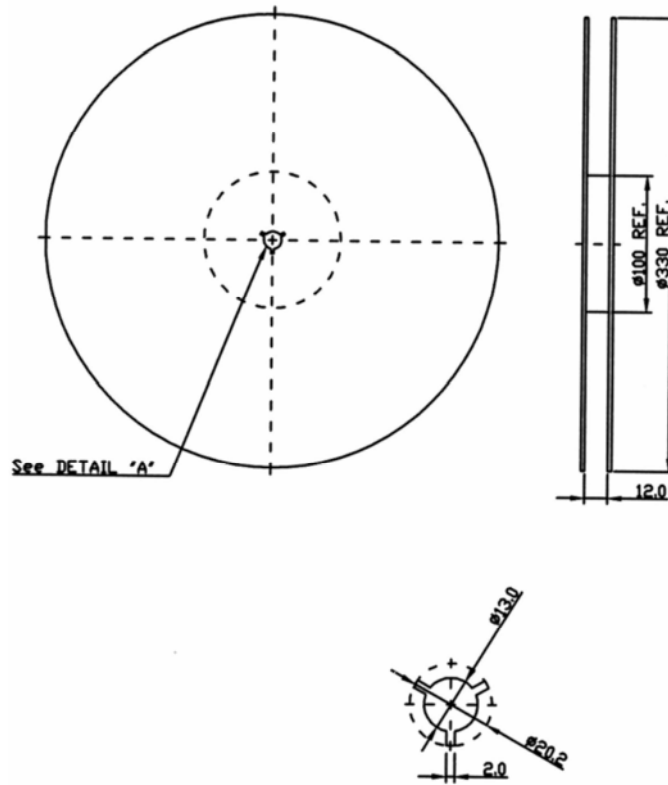


SAW Filter 2155.0MHz
Part No: MP10050

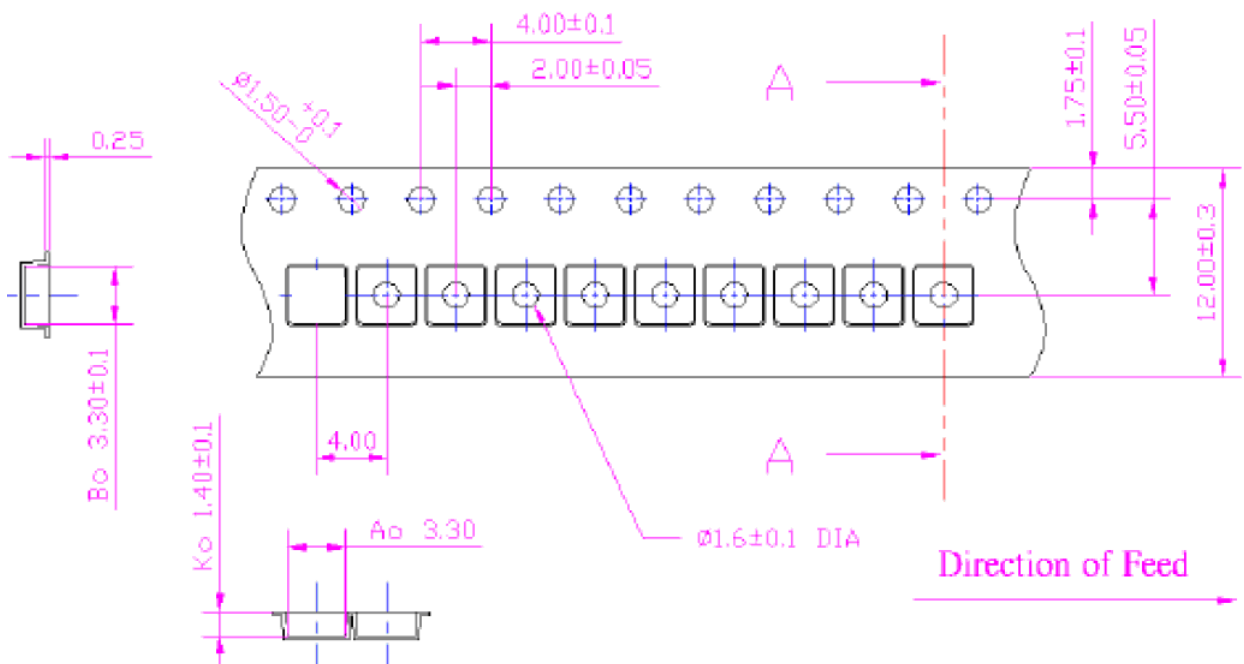
Model: TA2043A
Rev No: 1

G. PACKING:

1. Reel Dimensions



2. Tape Dimensions



SAW Filter 2155.0MHz
Part No: MP10050

Model: TA2043A
Rev No: 1

H. RECOMMENDED REFLOW PROFILE:

1. Preheating shall be fixed at 150~180°C for 60~90 seconds.
2. Ascending time to preheating temperature 150°C shall be 30 seconds min.
3. Heating shall be fixed at 220°C for 50~80 seconds and at 260°C +0/-5°C peak (20~40 sec).
4. Time: 2 times.

