

**SAW Filter 1278.750MHz**  
**Part No: MP10172**

**Model: TA2552A**  
**Rev. No: 1**

**A. MAXIMUM RATING:**

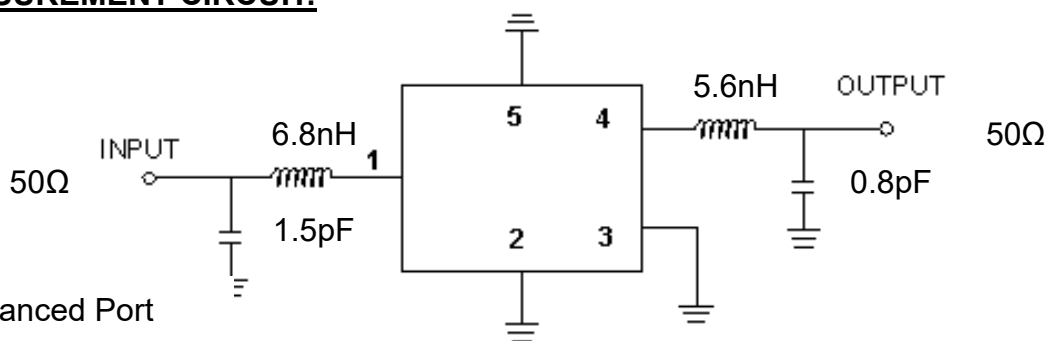
Electrostatic Sensitive Device (ESD)

1. Input Power Level: 10dBm
2. DC Voltage: 3V
3. Operating Temperature: -40°C to +85°C
4. Storage Temperature: -40°C to +85°C
5. Moisture Sensitivity Level: Level 2a (MSL2a)

**B. ELECTRICAL CHARACTERISTICS:**

Item	Unit	Min.	Typ.	Max.
Center frequency Fc	MHz	-	1278.75	-
Insertion loss (1251.25 ~ 1306.25MHz) IL	dB	-	2.0	3.5
Amplitude ripple (1251.25 ~ 1306.25MHz)	dB	-	0.5	1.2
Group delay ripple (1251.25 ~ 1306.25MHz)	ns	-	13	50
Return loss (1251.25 ~ 1306.25MHz)	dB	7	11	-
Attenuation (Reference level from 0dB)				
10 ~ 1124MHz	dB	30	34	-
1124 ~ 1214MHz	dB	24	30	-
1343 ~ 1348MHz	dB	25	41	-
1348 ~ 1434MHz	dB	25	34	-
1434 ~ 1650MHz	dB	22	28	-
1650 ~ 3000MHz	dB	25	31	-
Temperature coefficient of frequency	ppm/k	-	-36	-

**C. MEASUREMENT CIRCUIT:**

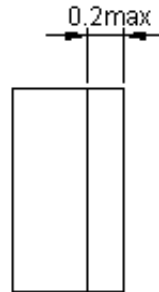
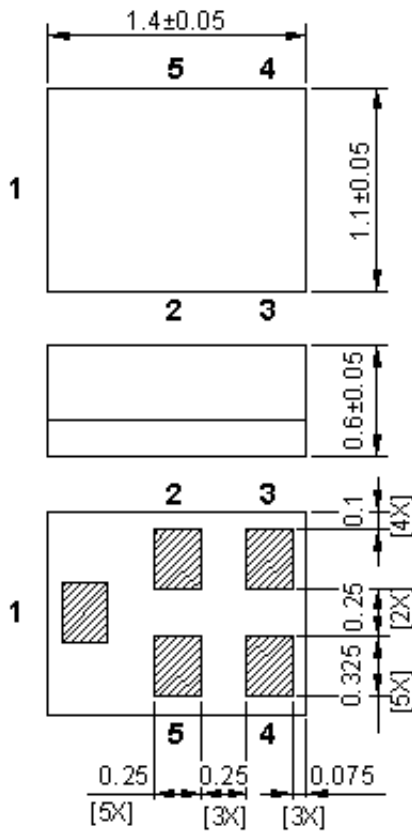


- 1: Unbalanced Port  
 4: Unbalanced Port  
 Others: Ground

**SAW Filter 1278.750MHz**  
**Part No: MP10172**

**Model: TA2552A**  
**Rev. No: 1**

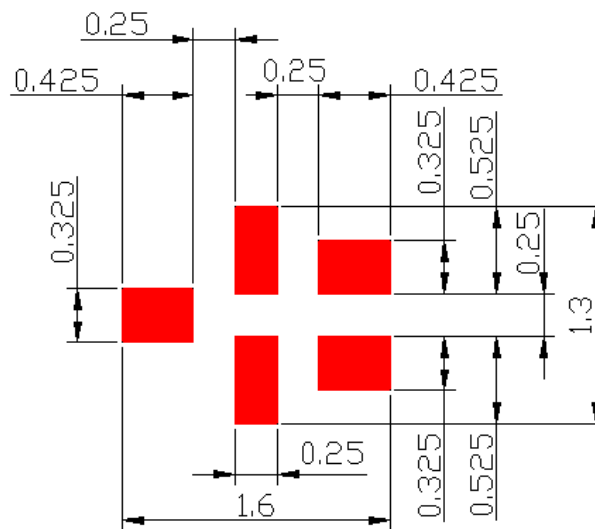
**D. OUTLINE DRAWING:**



All tolerances are +/-0.05 mm unless otherwise specified  
 Coplanarity : 0.1 mm max.  
 1 to 5 : Pin No.  
 Unit : mm

Pin No.	Symbol	Function
1	IN	Input
2	GND	Ground
3	GND	Ground
4	OUT	Output
5	GND	Ground

**E. PCB FOOTPRINT:**

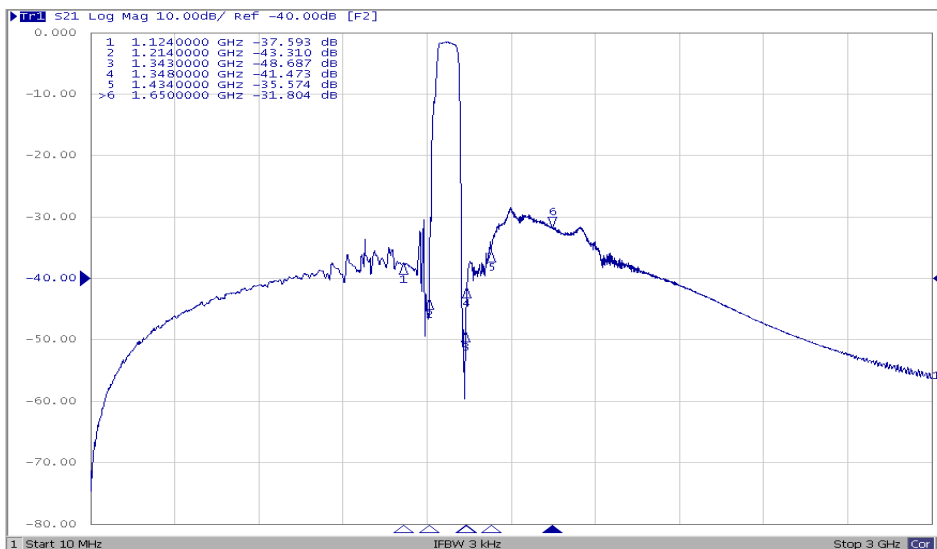
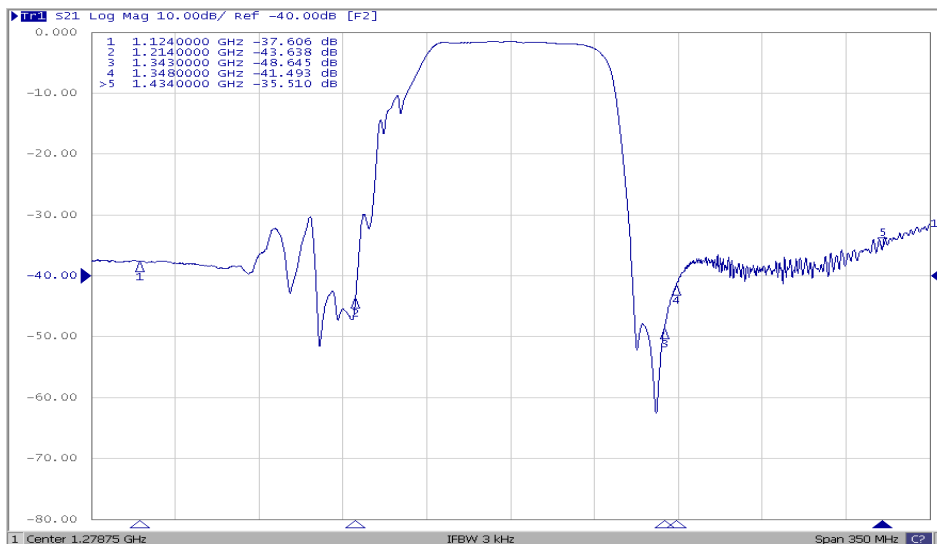
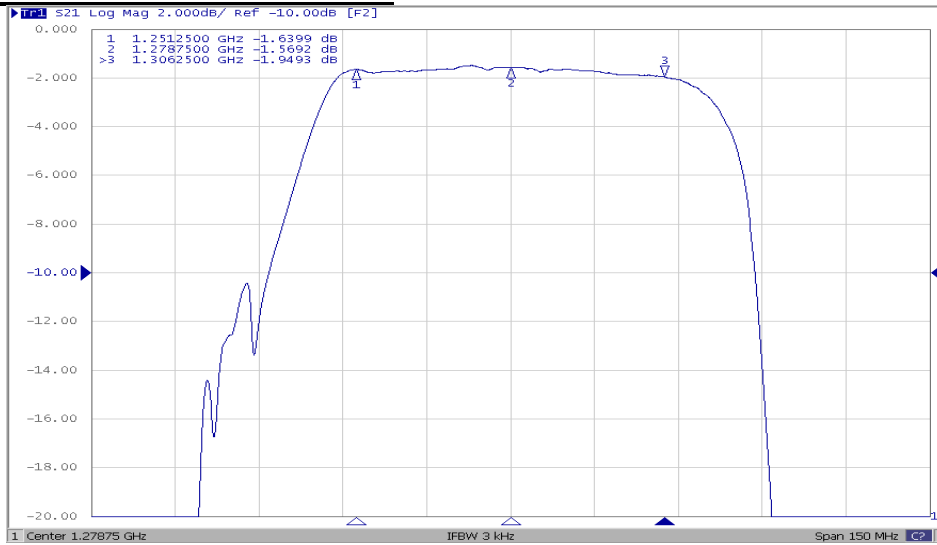


: Land Pattern  
 Unit : mm

**SAW Filter 1278.750MHz**  
**Part No: MP10172**

**Model: TA2552A**  
**Rev. No: 1**

**F. FREQUENCY CHARACTERISTICS:**

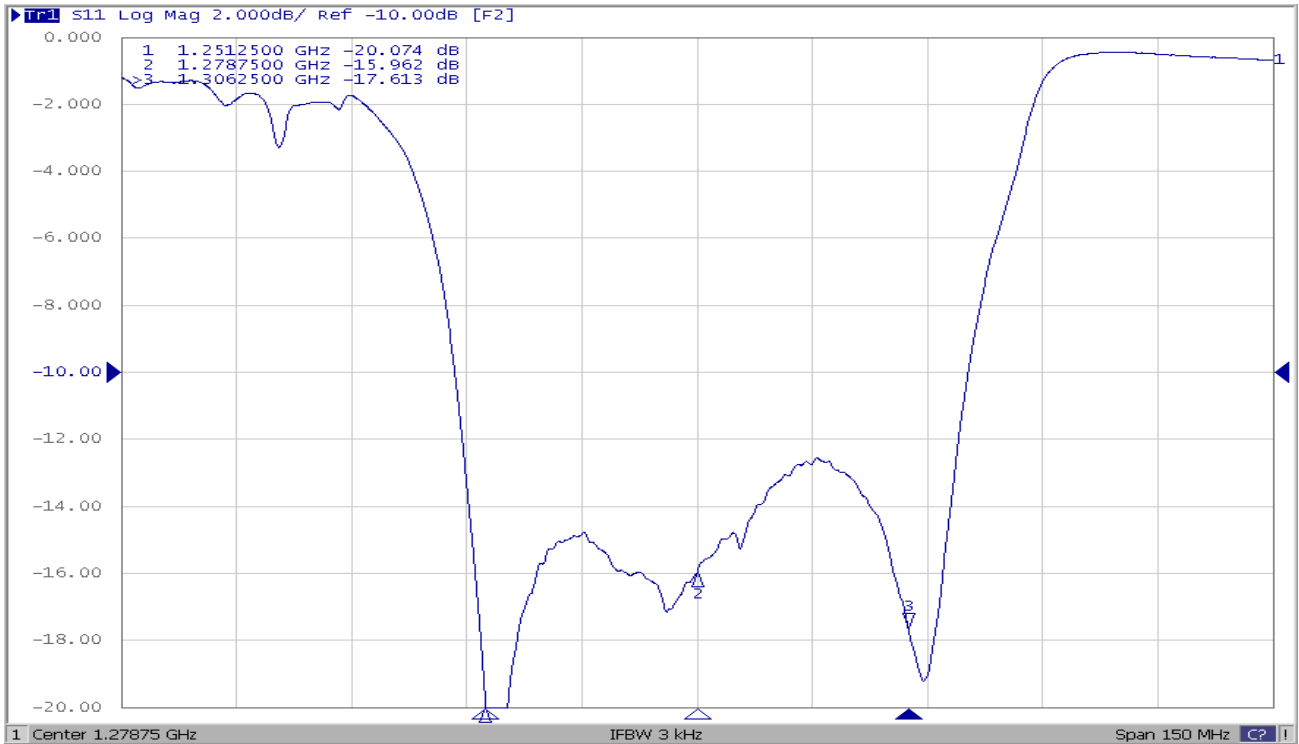


**SAW Filter 1278.750MHz**  
**Part No: MP10172**

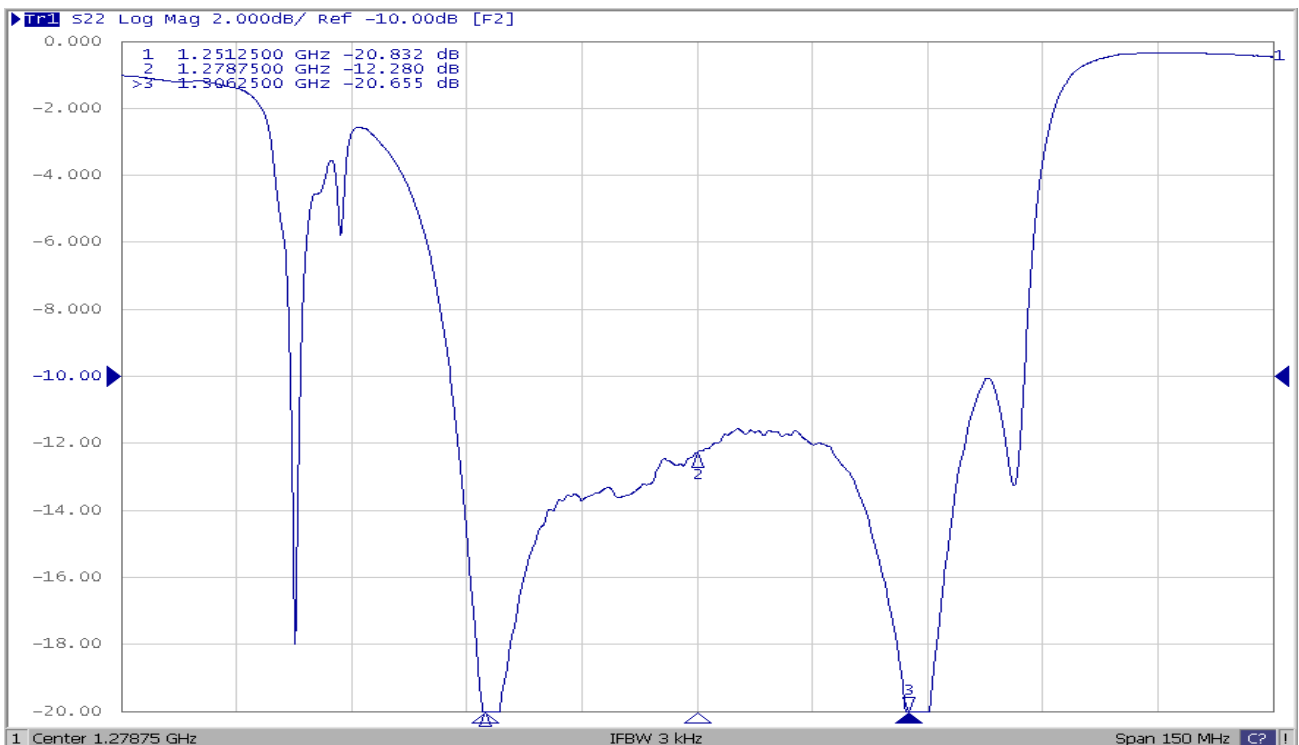
**Model: TA2552A**  
**Rev. No: 1**

Reflection Functions:

S11



S22

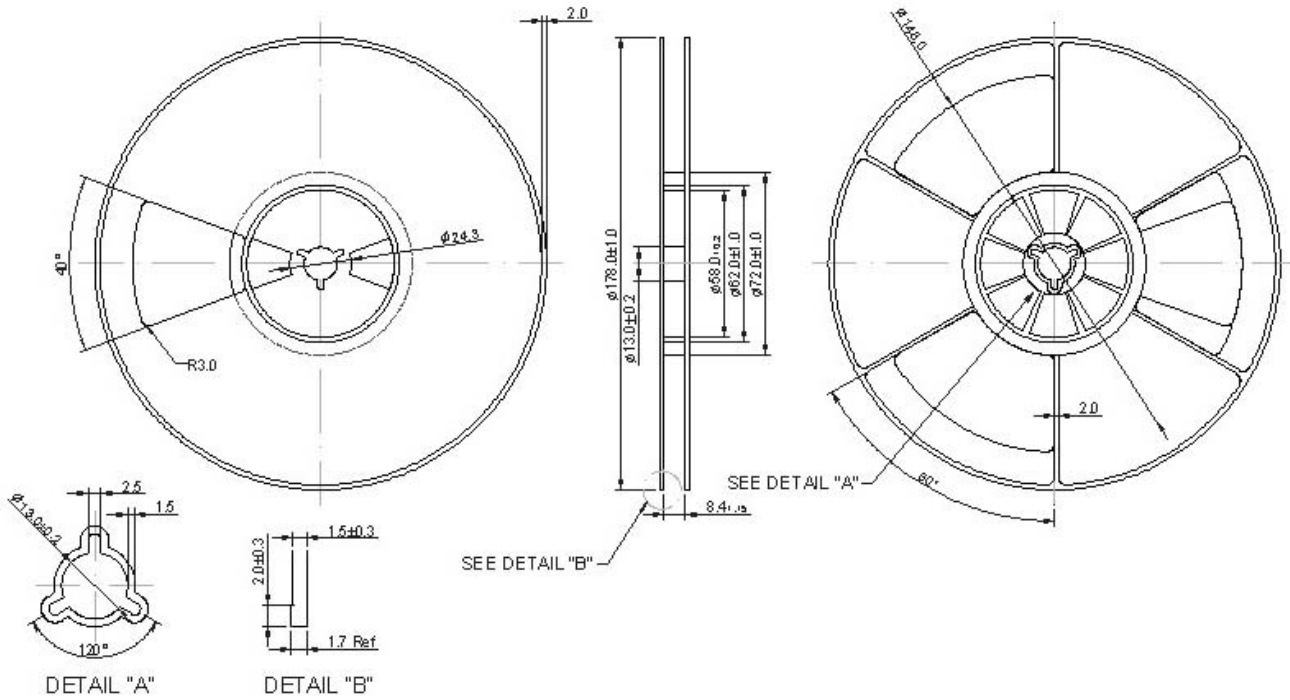


**SAW Filter 1278.750MHz**  
**Part No: MP10172**

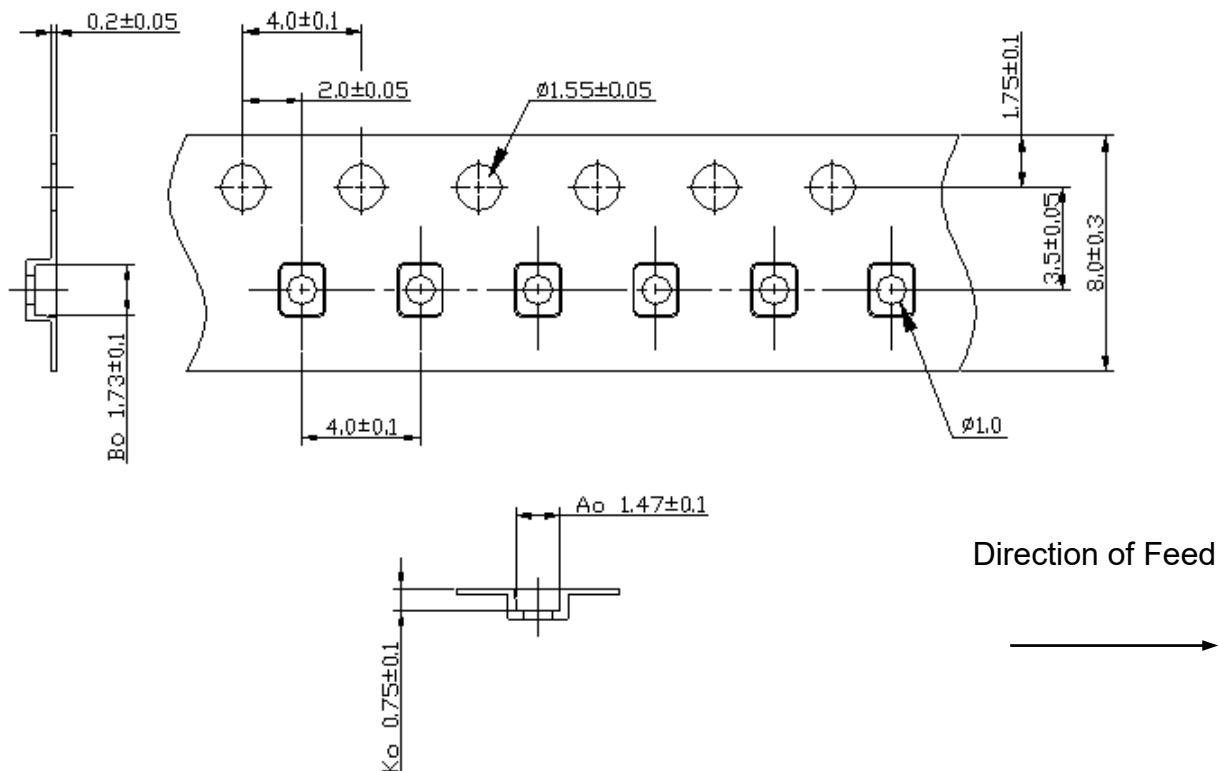
**Model: TA2552A**  
**Rev. No: 1**

**G. PACKING:**

1. Reel Dimensions



2. Tape Dimensions



**SAW Filter 1278.750MHz**  
**Part No: MP10172**

**Model: TA2552A**  
**Rev. No: 1**

**H. RECOMMENDED REFLOW PROFILE:**

1. Preheating shall be fixed at 150~180°C for 60~90 seconds.
2. Ascending time to preheating temperature 150°C shall be 30 seconds min.
3. Heating shall be fixed at 220°C for 50~80 seconds and at 260°C +0/-5°C peak (20~40 sec).
4. Time: 2 times.

