

SAW Filter 832.0MHz
Part No: MP11334

Model: TA1300A
Rev. No: 1

A. MAXIMUM RATING:

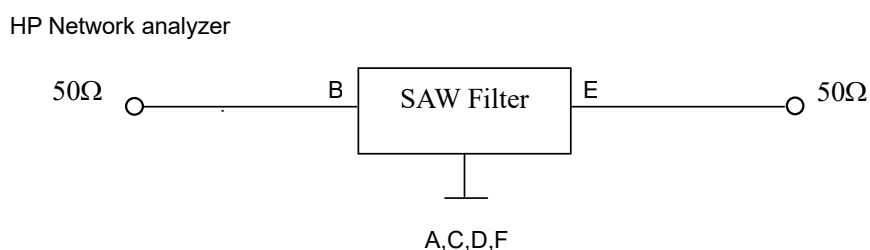
1. Input Power Level: 10dBm
2. DC voltage: 5V
3. Operating Temperature: -30°C to 60°C
4. Storage Temperature: -30°C to +85°C

B. CHARACTERISTICS:

Item	Unit	Min.	Typ.	Max.
Center frequency Fc MHz		-	832	-
3dB Bandwidth MHz	dB	25.5	35	-
Amplitude ripple 819.2 ~ 844.7MHz	dB	-	1.4	1.7
Insertion loss 819.2 ~ 844.7MHz	dB	-	2.4	3.0
Group Delay variation within 819.2 ~ 844.7MHz	ns	-	25	200
Attenuation (reference from 0dB)				
0.3 ~ 756MHz	dB	40	52	-
756 ~ 806MHz	dB	10	15	-
858 ~ 822MHz	dB	10	15	-
922 ~ 956MHz	dB	40	53	-
956 ~ 1205MHz	dB	45	52	-
Source impedance Z _S	Ω	-	50	-
Load impedance Z _L	Ω	-	50	-

Note: No matching network required for operation at 50Ω

C. MEASUREMENT CIRCUIT:

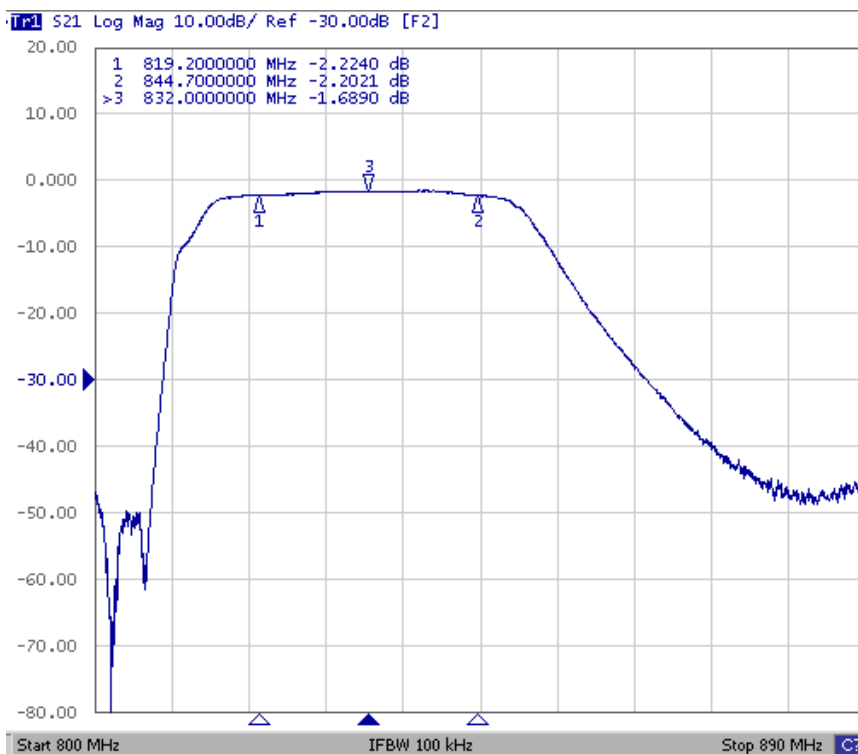
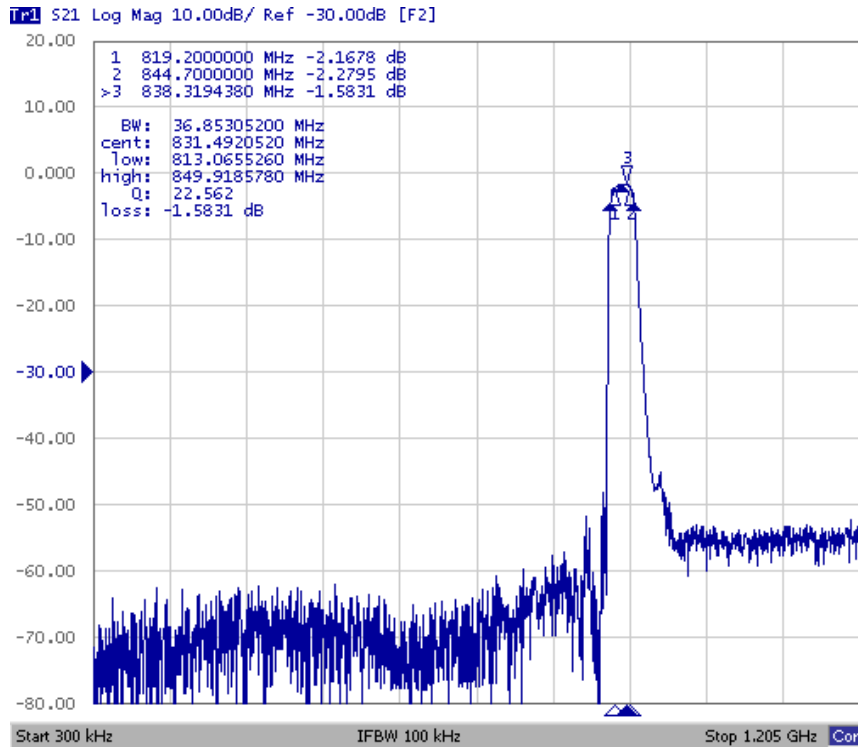


SAW Filter 832.0MHz
Part No: MP11334

Model: TA1300A
Rev. No: 1

D. FREQUENCY CHARACTERISTICS:

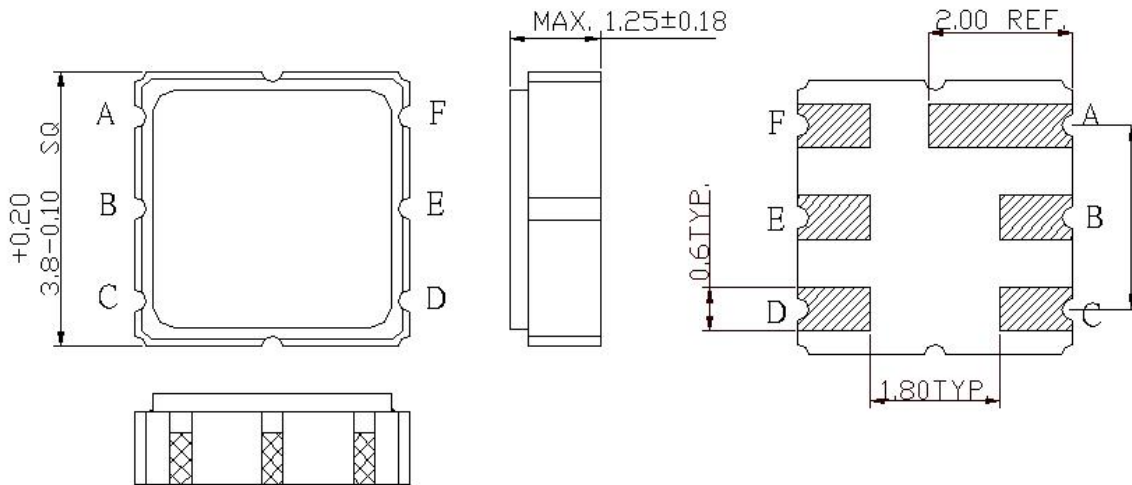
Transfer Functions



SAW Filter 832.0MHz
Part No: MP11334

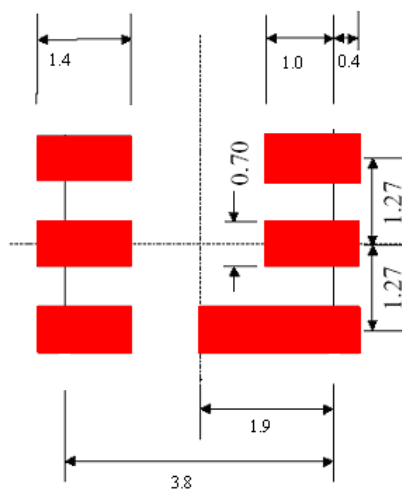
Model: TA1300A
Rev. No: 1

E. OUTLINE DRAWING:



B: Input
 E: Output
 A, C, D, F: Ground
 Unit: mm

F. PCB FOOTPRINT:

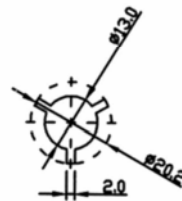
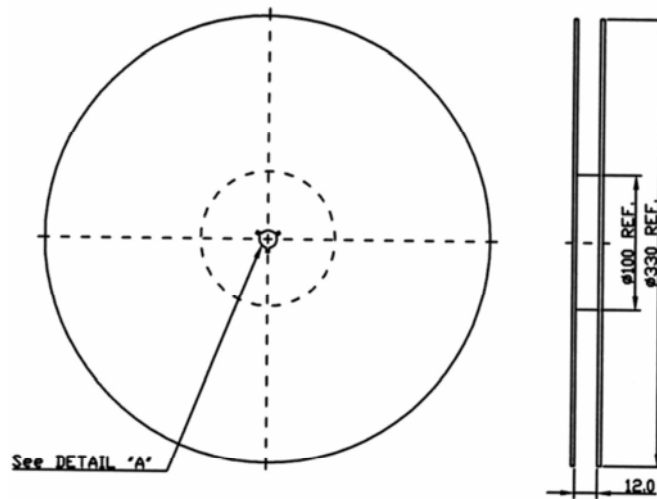


SAW Filter 832.0MHz
Part No: MP11334

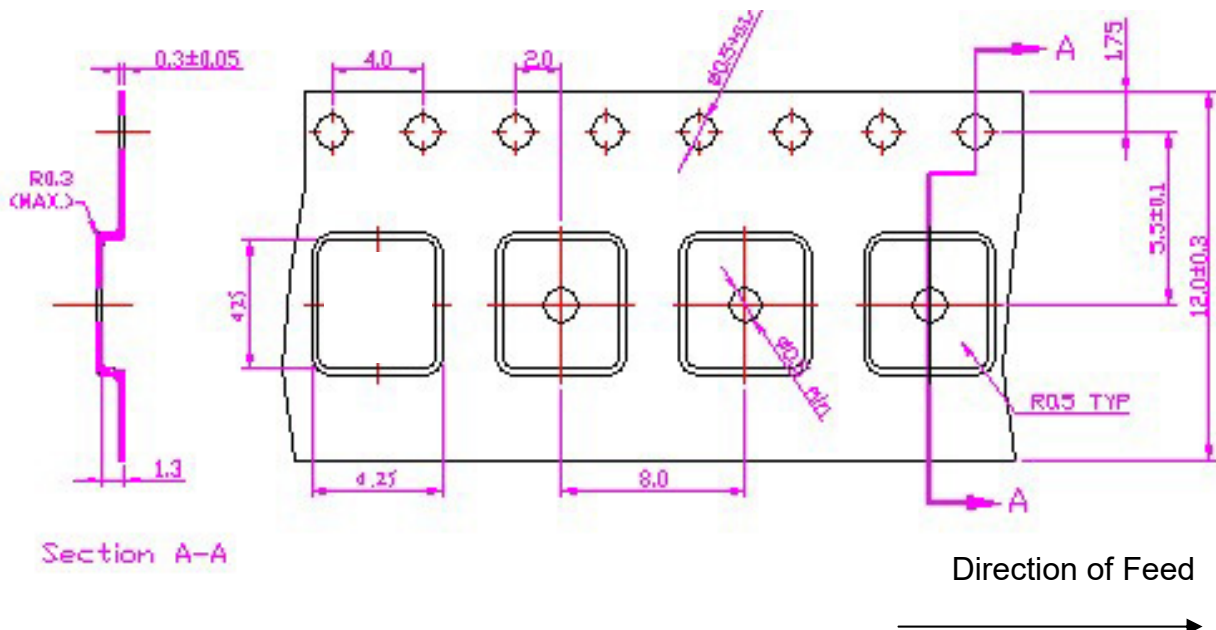
Model: TA1300A
Rev. No: 1

G. PACKING:

1. Reel Dimensions



2. Tape Dimensions



SAW Filter 832.0MHz
Part No: MP11334

Model: TA1300A
Rev. No: 1

H. RECOMMENDED REFLOW PROFILE:

