

SAW Filter 1223.0MHz (AEC-Q200 Compliant)
Part No: MP11465

Model: TA2248CA3114
Rev. No: 1

A. MAXIMUM RATING:

Electrostatic Sensitive Device (ESD)

1. Input Power Level: 10dBm
2. DC voltage: 3V
3. Operating Temperature: -40°C to +105°C
4. Storage Temperature: -40°C to +105°C
5. Moisture Sensitivity Level: Level 1 (MSL1)

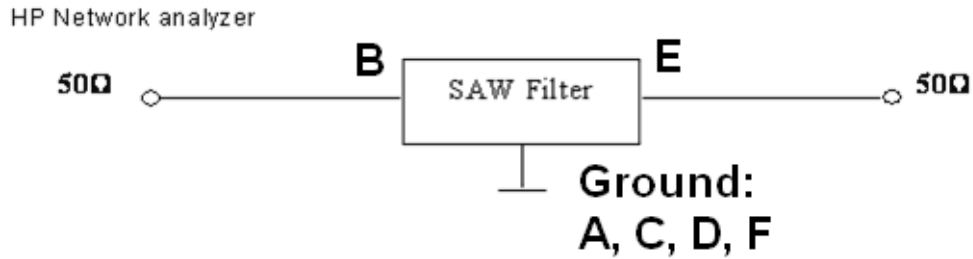
B. ELECTRICAL CHARACTERISTICS:

Item	Unit	Min.	Typ.	Max.
Center Frequency	MHz	-	1223	-
Insertion loss (1196 ~ 1250 MHz)	dB		3.0	3.5
Amplitude ripple (1196 ~ 1250 MHz)	dB	-	1.0	2.0
Return Loss (1196 ~ 1250 MHz)	dB	6.0	6.5	-
Group Delay Ripple				
1196 ~ 1250 MHz	ns	-	11	15
1196 ~ 1250 MHz (2 MHz moving windows)	ns	-	3.0	5.0
1226.577 ~ 1228.623 MHz	ns	-	2.0	7.0
1196.91 ~ 1217.37 MHz	ns	-	4.5	6.0
1242.426 ~ 1249.886 MHz	ns	-	4.0	7.0
Attenuation (Reference level from 0 dB)				
703 ~ 748 MHz	dB	35	44	-
880 ~ 915 MHz	dB	35	40	-
1710 ~ 1785 MHz	dB	35	39	-
1850 ~ 1910 MHz	dB	35	41	-
1920 ~ 1980 MHz	dB	35	40	-
Temperature Coefficient of Frequency	ppm/k	-	-36	-

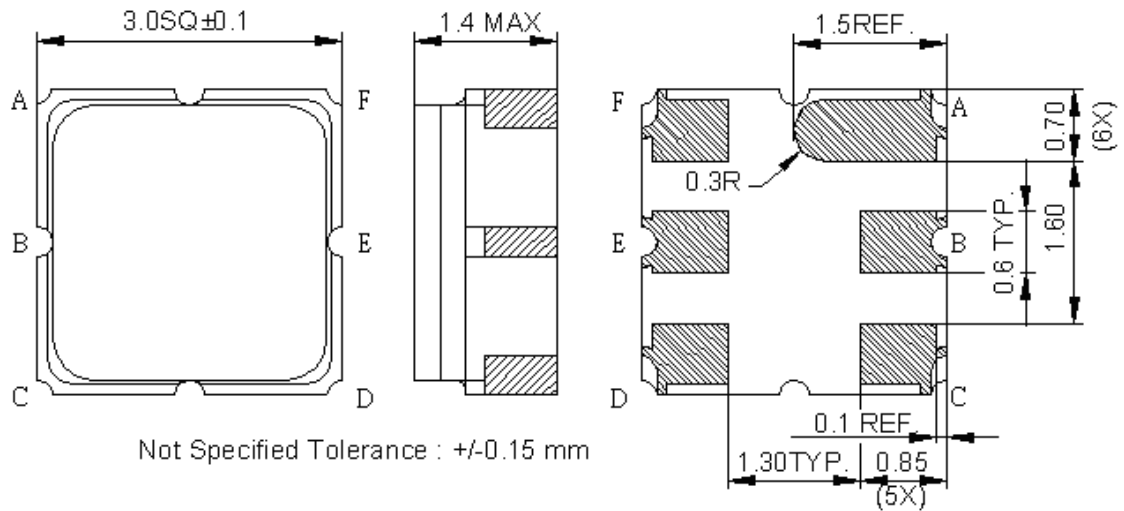
SAW Filter 1223.0MHz (AEC-Q200 Compliant)
Part No: MP11465

Model: TA2248CA3114
Rev. No: 1

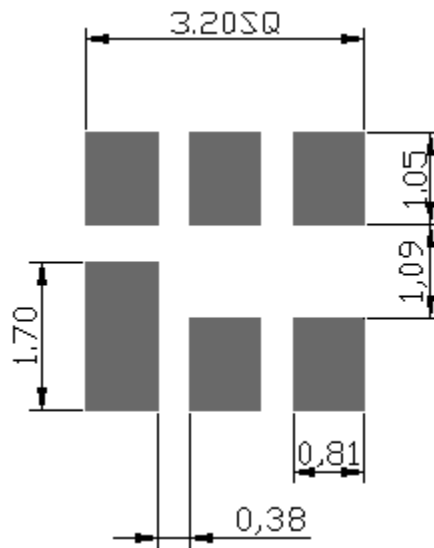
C. MEASUREMENT CIRCUIT:



D. OUTLINE DRAWING:



E. PCB FOOTPRINT:

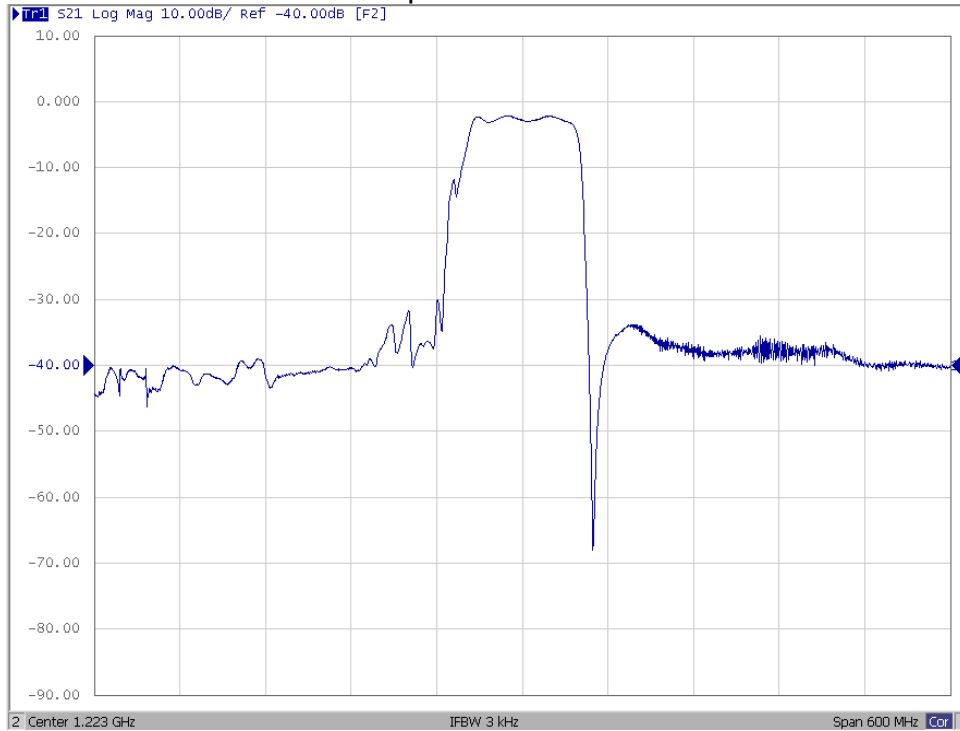


SAW Filter 1223.0MHz (AEC-Q200 Compliant)
Part No: MP11465

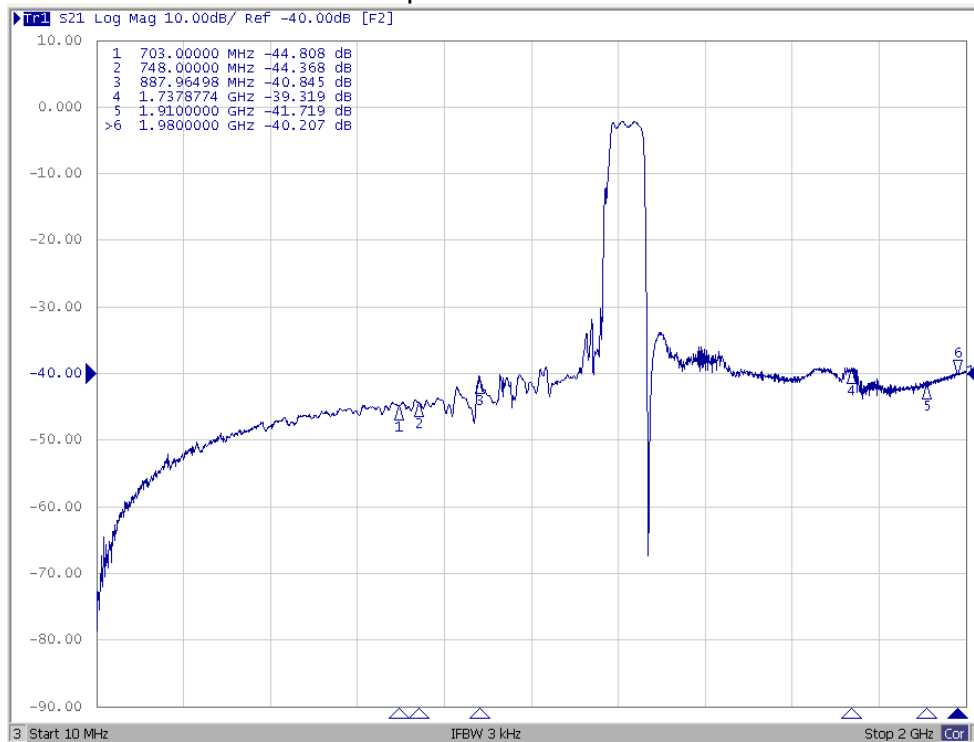
Model: TA2248CA3114
Rev. No: 1

F. FREQUENCY CHARACTERISTICS:

Span 600MHz



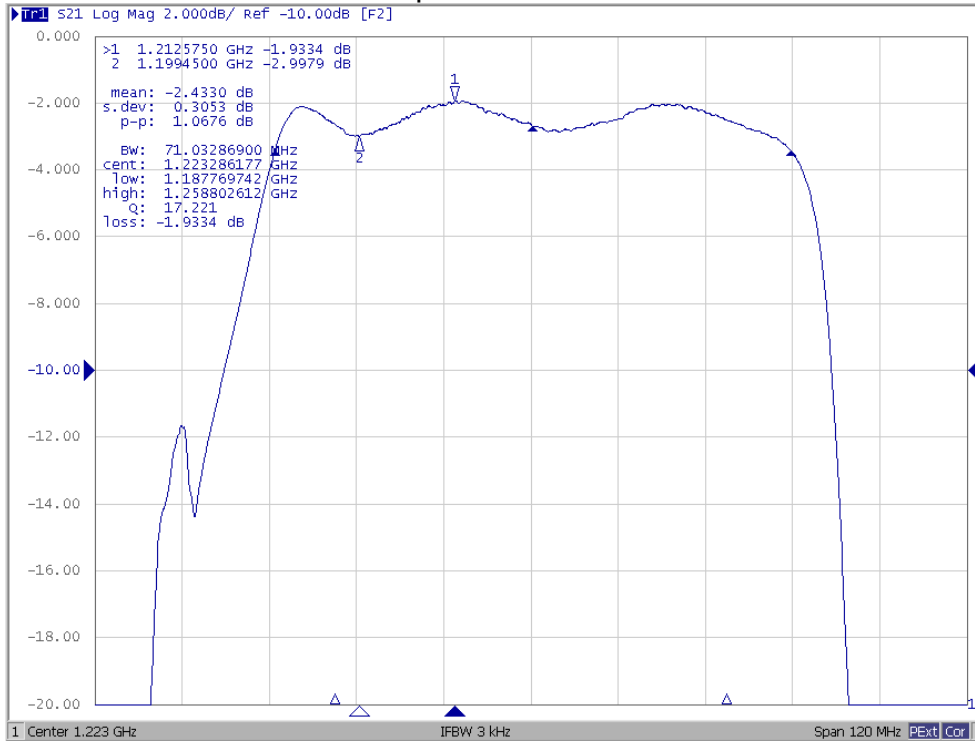
Span 2000MHz



SAW Filter 1223.0MHz (AEC-Q200 Compliant)
Part No: MP11465

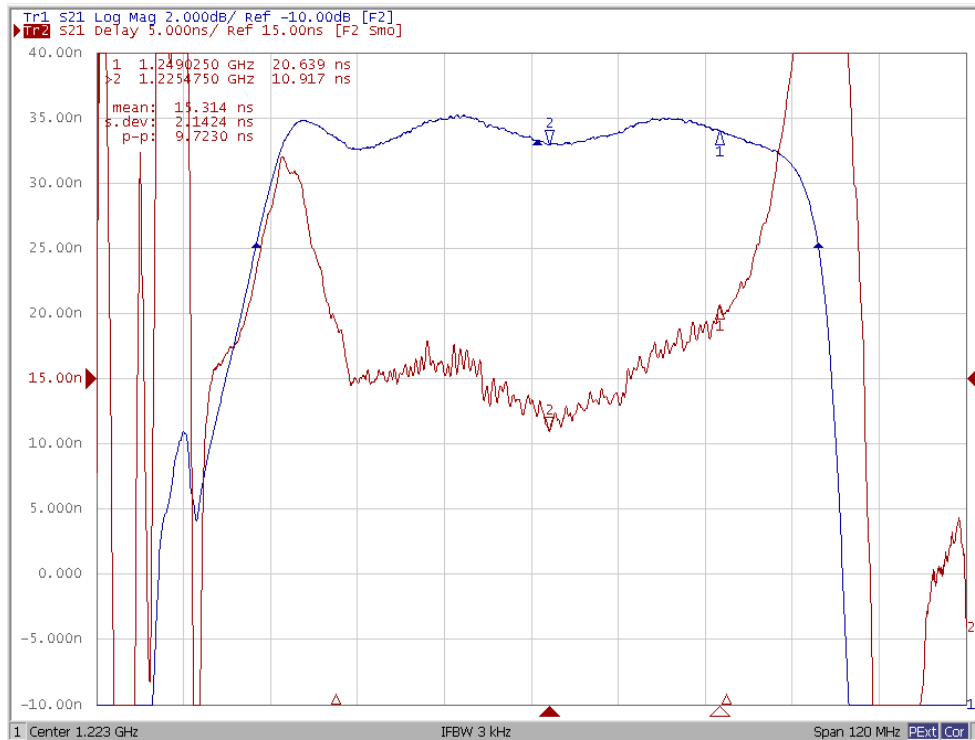
Model: TA2248CA3114
Rev. No: 1

Span 120MHz



Group Delay

Span 120MHz

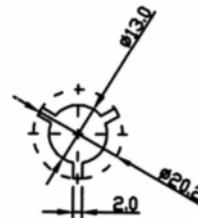
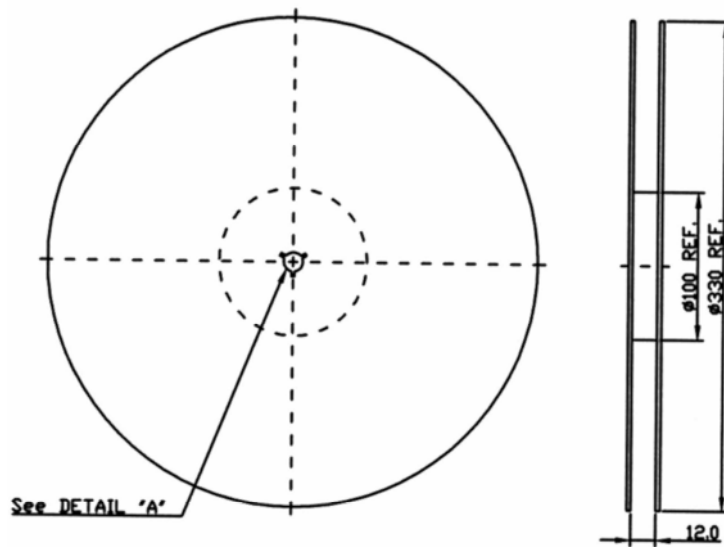


SAW Filter 1223.0MHz (AEC-Q200 Compliant)
Part No: MP11465

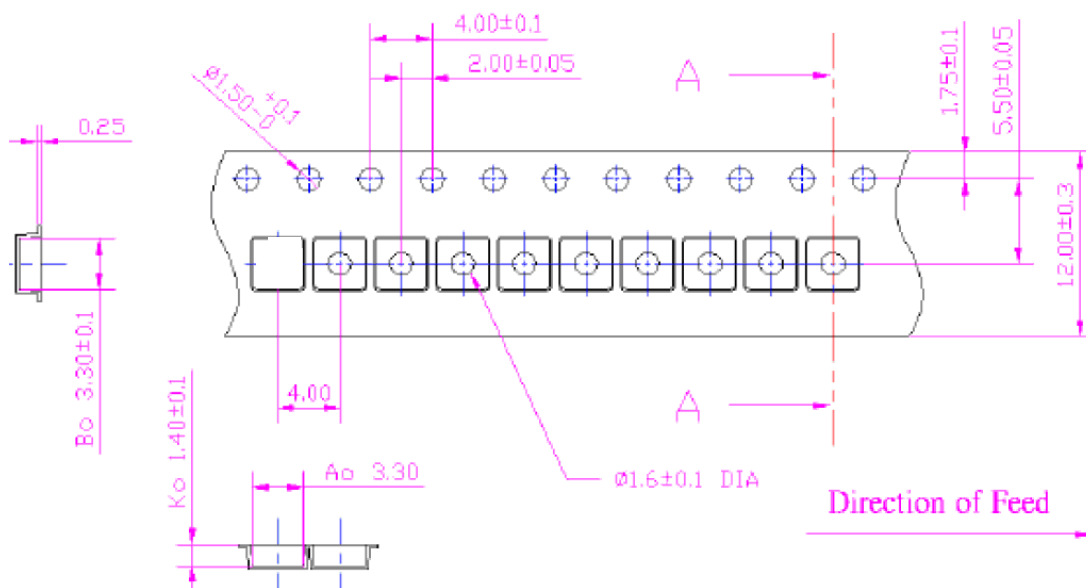
Model: TA2248CA3114
Rev. No: 1

G. PACKING:

1. Reel Dimensions



2. Tape Dimensions



SAW Filter 1223.0MHz (AEC-Q200 Compliant)
Part No: MP11465

Model: TA2248CA3114
Rev. No: 1

H. RECOMMENDED REFLOW PROFILE:

1. Preheating shall be fixed at 150~180°C for 60~90 seconds.
2. Ascending time to preheating temperature 150°C shall be 30 seconds min.
3. Heating shall be fixed at 220°C for 50~80 seconds and at 260°C +0/-5°C peak (20~40 sec).
4. Time: 2 times.

