

SAW Filter: 431.56240MHz
Part No: MP10343

Model: TA2409A
Rev No: 1

A. MAXIMUM RATING:

Electrostatic Sensitive Device

1. Input Power Level: 10dBm
2. DC Voltage: 0V
3. Operating Temperature: -40°C to +85°C
4. Storage Temperature: -40°C to +85°C
5. Moisture Sensitivity Level: Level 1 (MSL1)

B. ELECTRICAL CHARACTERISTICS:

Ambient Temperature: 25°C

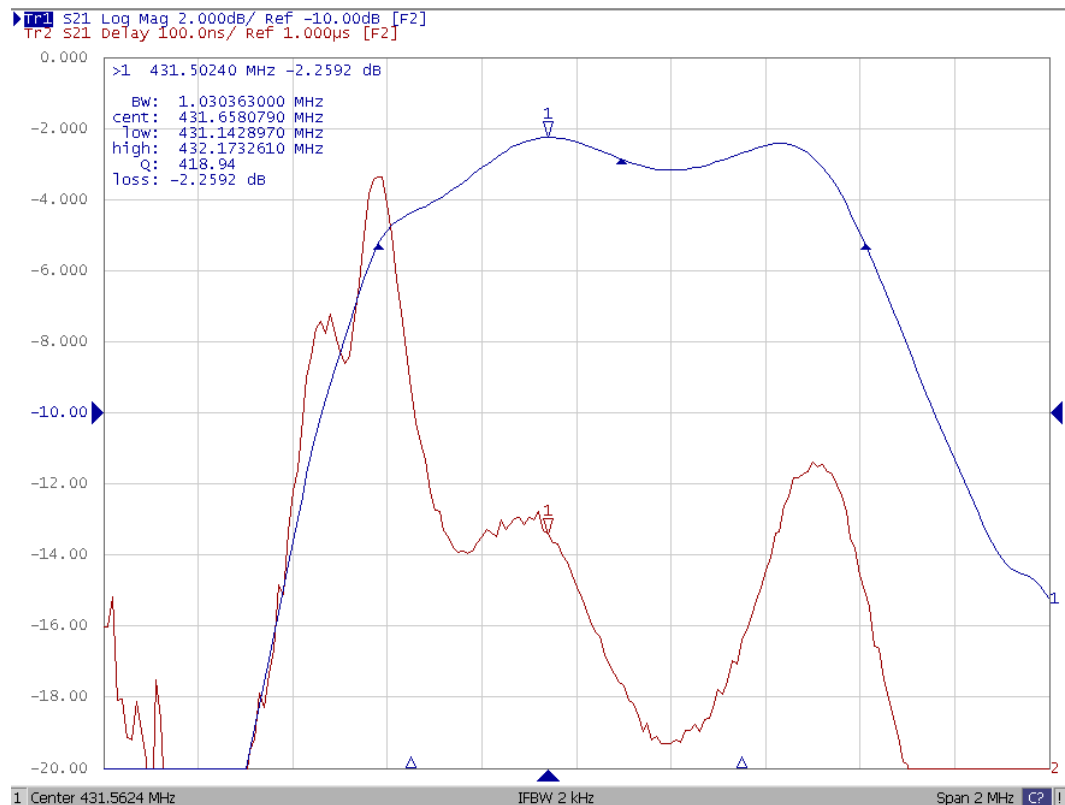
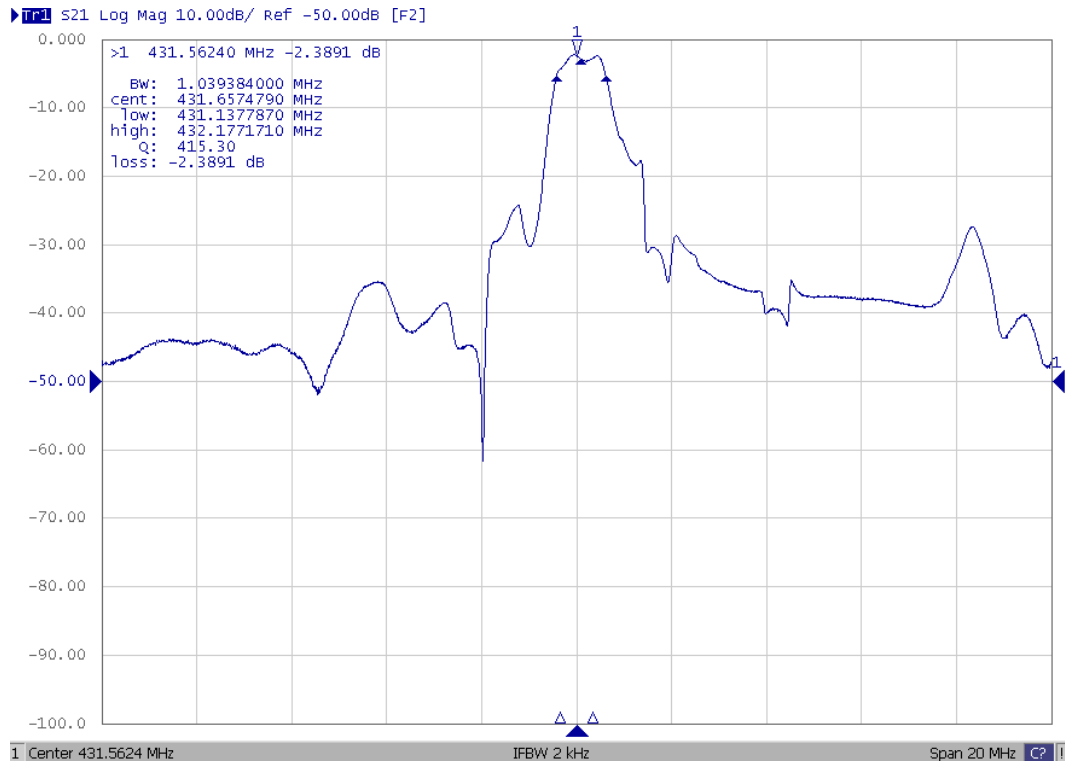
Item	Unit	Min.	Typ.	Max.
Center frequency Fc	MHz	-	431.5624	-
3dB BW	MHz	-	1.0	-
Minimum insertion loss IL (min) Incl. loss of matching elements *1)	dB	-	2.2	4.0
Passband (relative to IL min) *1) 431.2124MHz ~ 431.9124MHz	dB	-	1.5	3.0
Group Delay Variation 431.2124MHz ~ 431.9124MHz	ns	-	500	-
Attenuation (relative to IL min) *1)				
@430.775MHz	dB	5	22	-
@432.35MHz	dB	5	8	-
Input Z _{IN} = R _{IN} // C _{IN}	Ω // pF			
Output Z _{OUT} = R _{OUT} // C _{OUT}	Ω // pF			

*1): The matching circuit is real by actual passive components.
 0805 Coillcraft CS series chip conductor is used for inductor.
 0402 muRata GRM series is used for capacitor.

SAW Filter: 431.56240MHz
Part No: MP10343

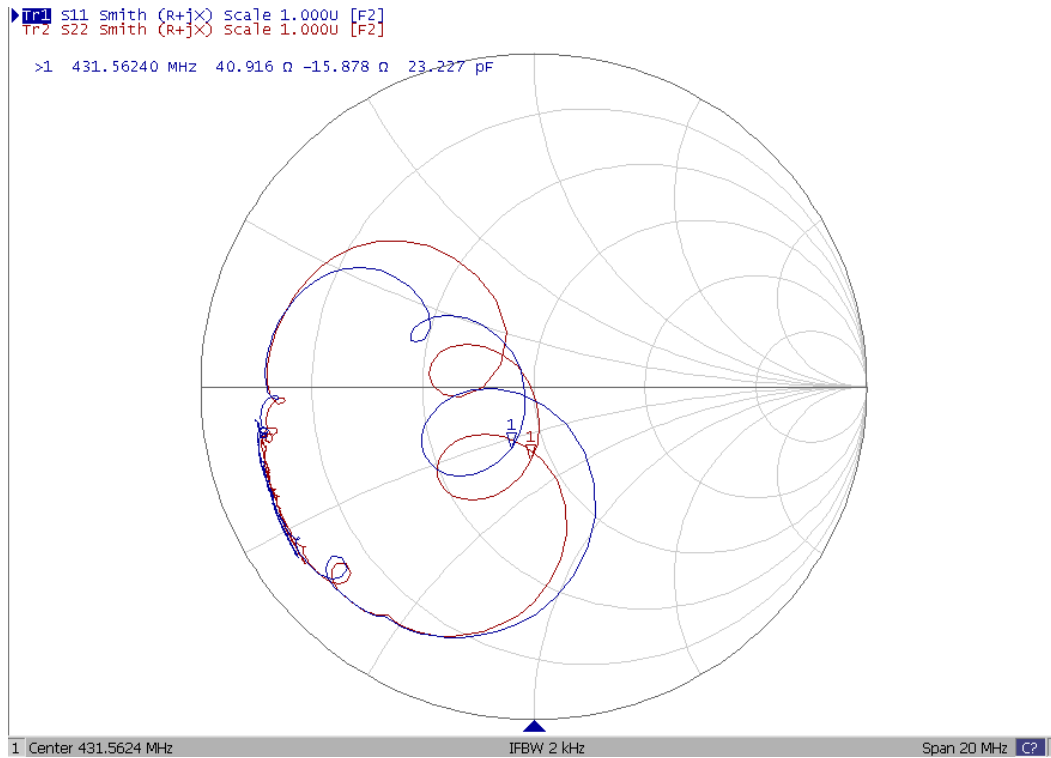
Model: TA2409A
Rev No: 1

C. FREQUENCY CHARACTERISTICS:

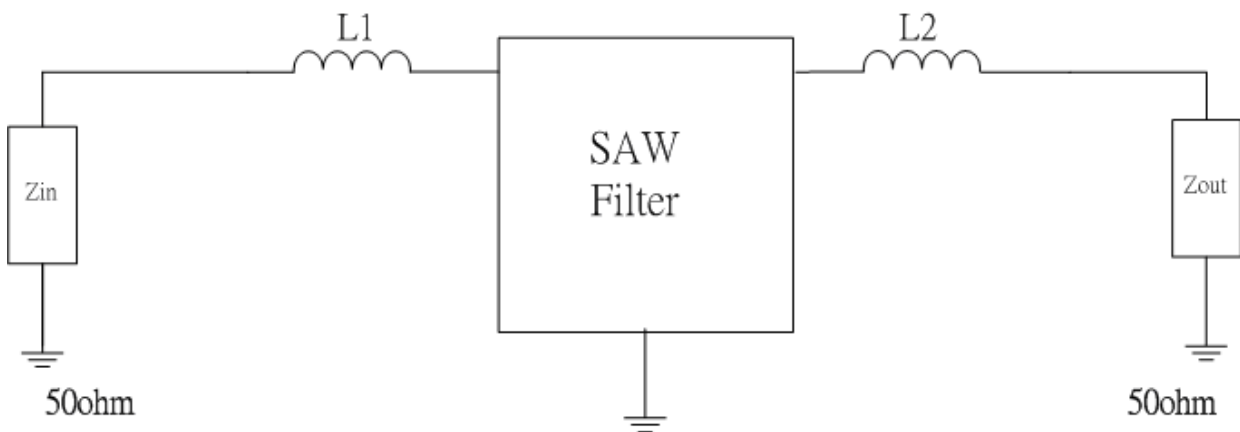


SAW Filter: 431.56240MHz
Part No: MP10343

Model: TA2409A
Rev No: 1



D. MEASUREMENT CIRCUIT:

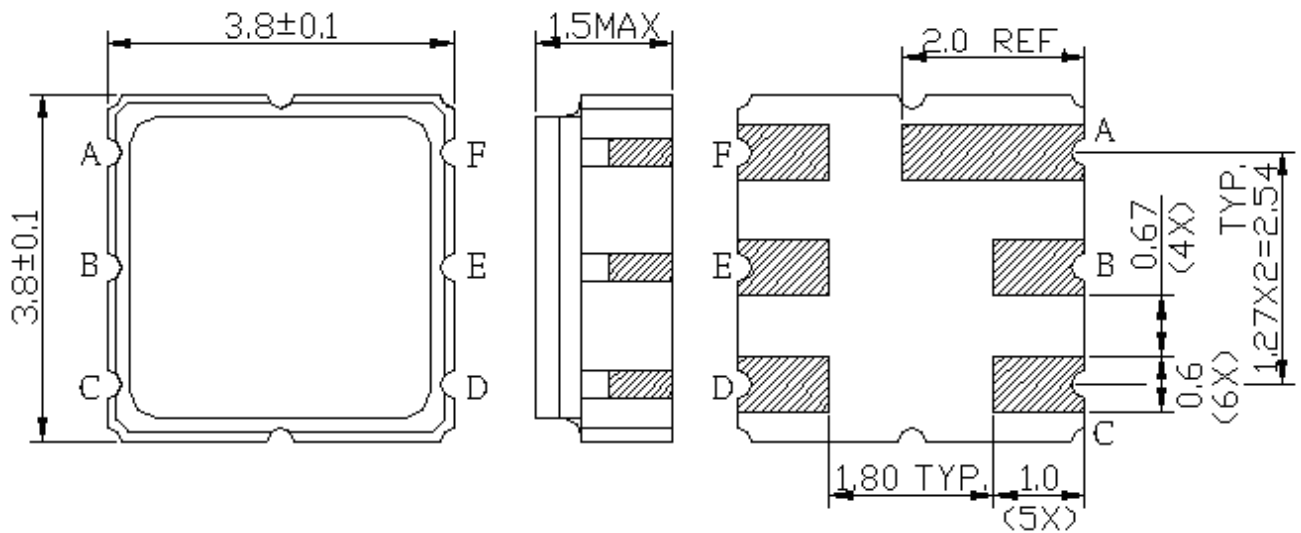


$L1 = 68\text{nH} + 5.6\text{nH}, L2 = 68\text{nH} + 8\text{nH}$

SAW Filter: 431.56240MHz
Part No: MP10343

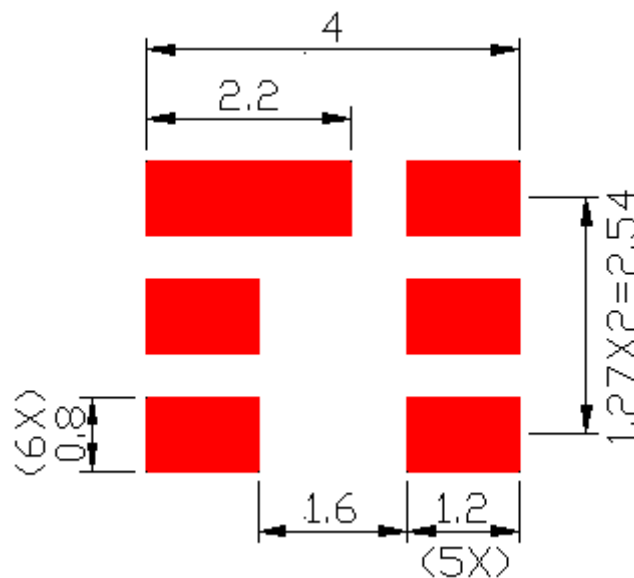
Model: TA2409A
Rev No: 1

E. OUTLINE DRAWING:



B: Input
 E: Output
 Others: Ground
 Unit: mm

F. PCB FOOTPRINT:

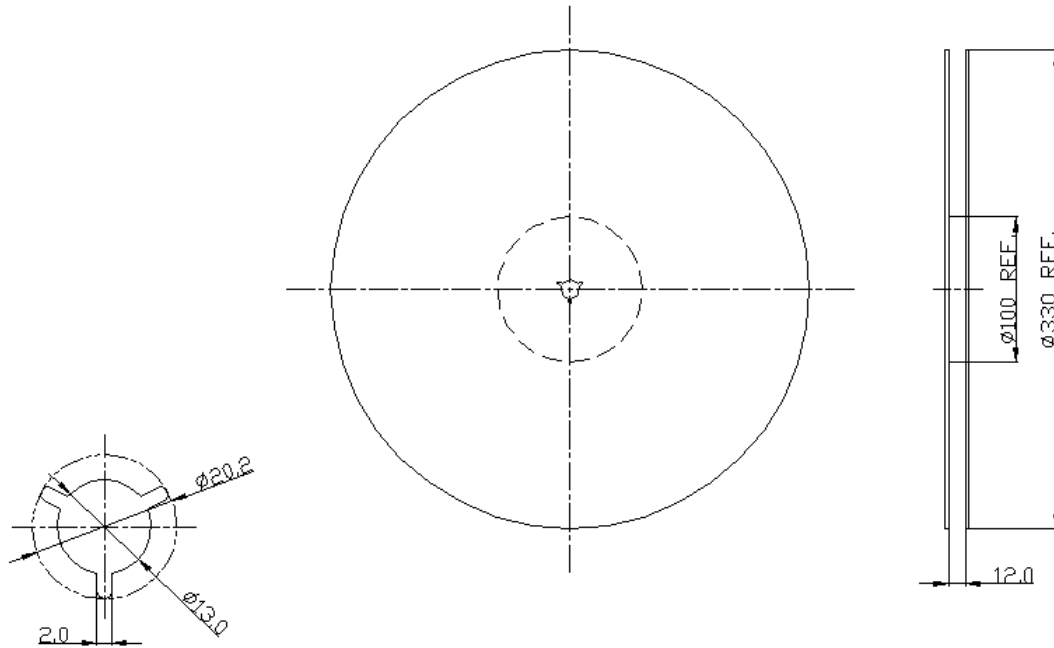


SAW Filter: 431.56240MHz
Part No: MP10343

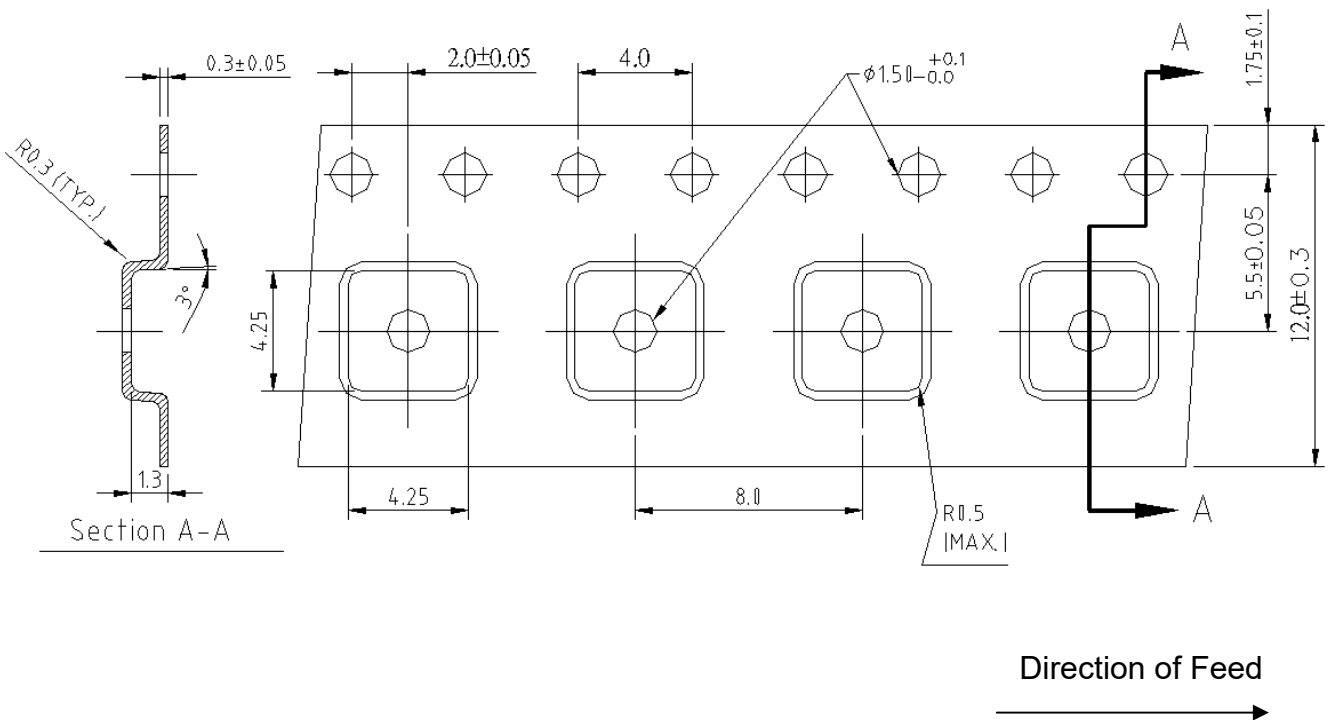
Model: TA2409A
Rev No: 1

G. PACKING:

1. Reel Dimension



2. Tape Dimension



SAW Filter: 431.56240MHz
Part No: MP10343

Model: TA2409A
Rev No: 1

H. RECOMMENDED REFLOW PROFILE:

1. Preheating shall be fixed at 150 ~ 180°C for 60 ~ 90 seconds.
2. Ascending time to preheating temperature 150°C shall be 30 seconds min.
3. Heating shall be fixed at 220°C for 50 ~ 80 seconds and at 260°C +0/-5°C peak (20 ~ 40 sec).
4. Time: 2 times.

