

SAW Filter 2185.0MHz
Part No: MP09828

Model: TA2566A
Rev No: 1

A. MAXIMUM RATING:

Electrostatic Sensitive Device (ESD)

1. Input Power Level: 10dBm
2. DC voltage: 3V
3. Operating Temperature: -40°C to +85°C
4. Storage Temperature: -40°C to +85°C
5. Moisture Sensitive Level (MSL): Level 1

B. ELECTRICAL CHARACTERISTICS:

Item	Unit	min	Typ.	max
Center Frequency Fc	MHz	-	2185	-
Insertion Loss (2170 ~ 2200MHz) IL	dB		2.0	4.0
VSWR Input (2170 ~ 2200MHz)			2.0	2.5
VSWR Output (2170 ~ 2200MHz)			2.0	2.5
Amplitude ripple (2170 ~ 2200MHz)	dB		0.5	2.0
Attenuation				
DC ~ 1980MHz	dB	36	41	
1980 ~ 2130MHz	dB	30	35	
2130 ~ 2140MHz	dB	25	30	
2300 ~ 2500MHz	dB	35	40	
Temperature coefficient	ppm/°C	-36		
Package size	mm	3030		

SAW Filter 2185.0MHz

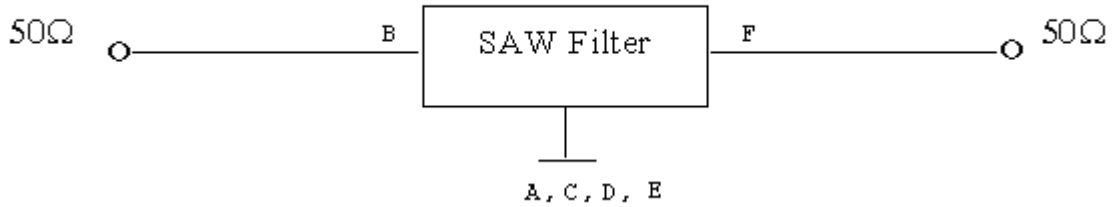
Model: TA2566A

Part No: MP09828

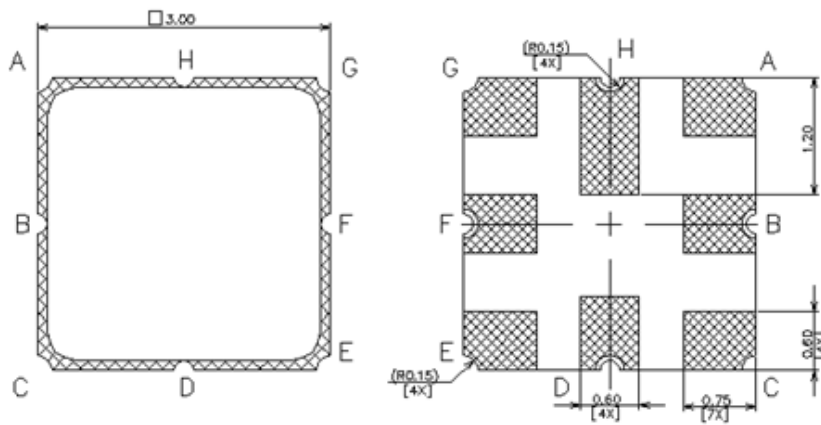
Rev No: 1

C. MEASUREMENT CIRCUIT:

HP Network analyzer

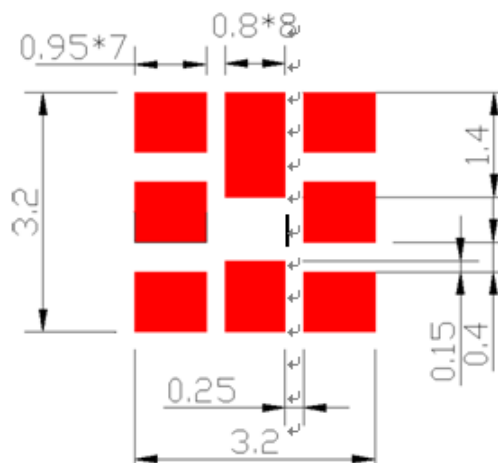


D. OUTLINE DRAWING:



B::Input
 F::Output
 A,C,D,E,G,H::Ground

E. PCB FOOTPRINT:

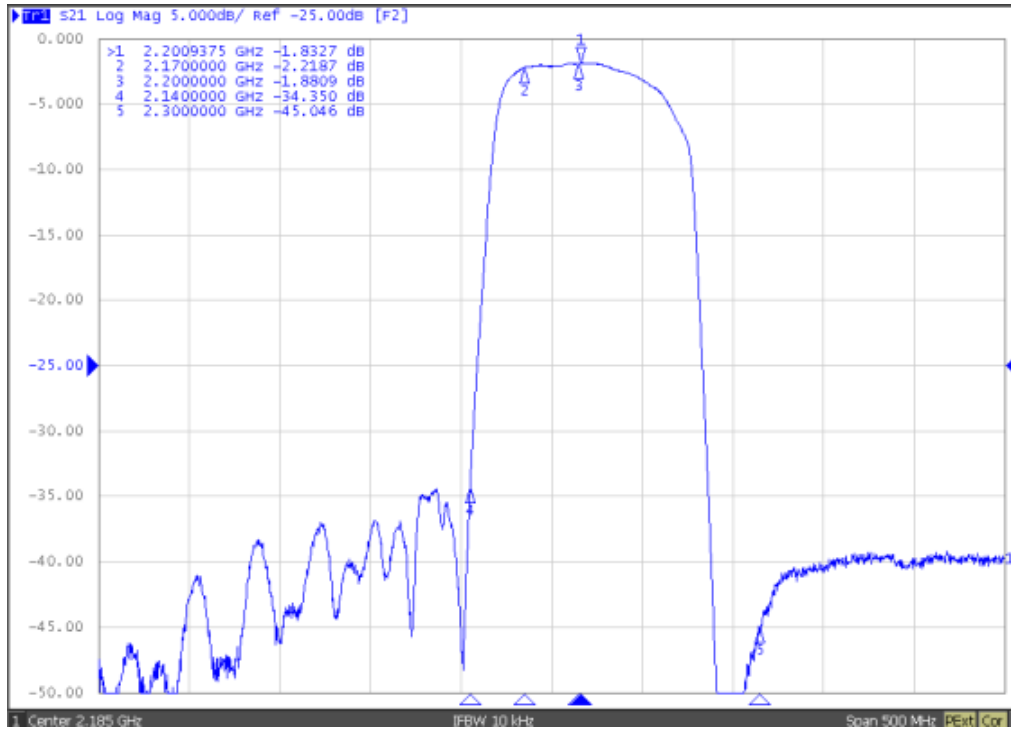


SAW Filter 2185.0MHz
Part No: MP09828

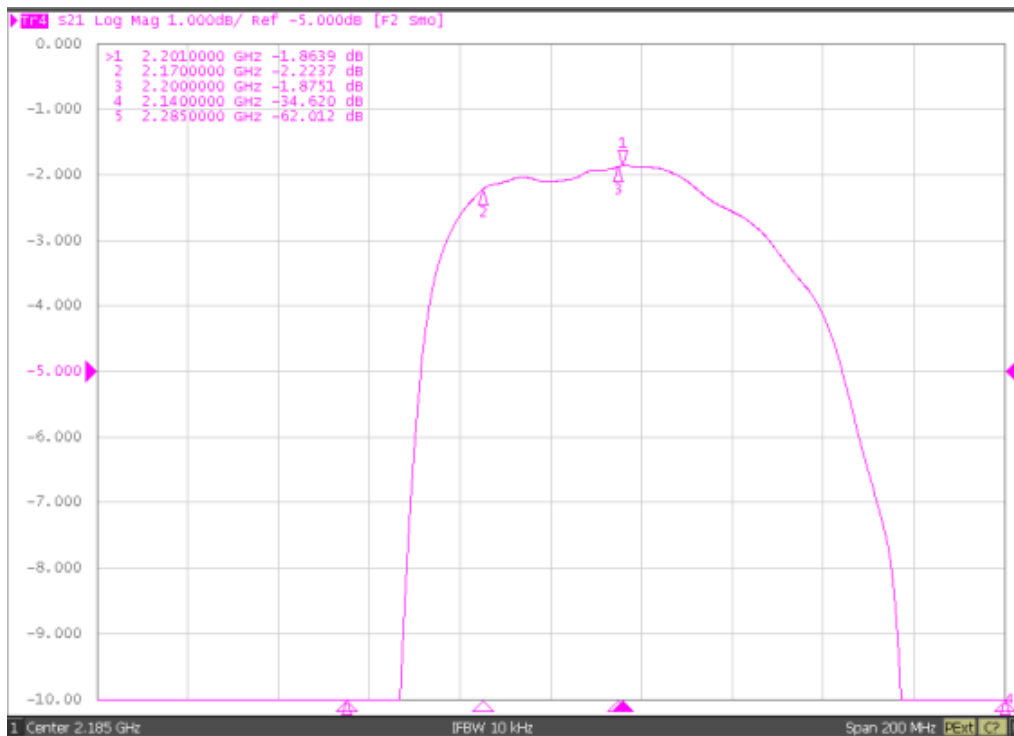
Model: TA2566A
Rev No: 1

F. FREQUENCY CHARACTERISTICS:

1. S21 Span 400MHz



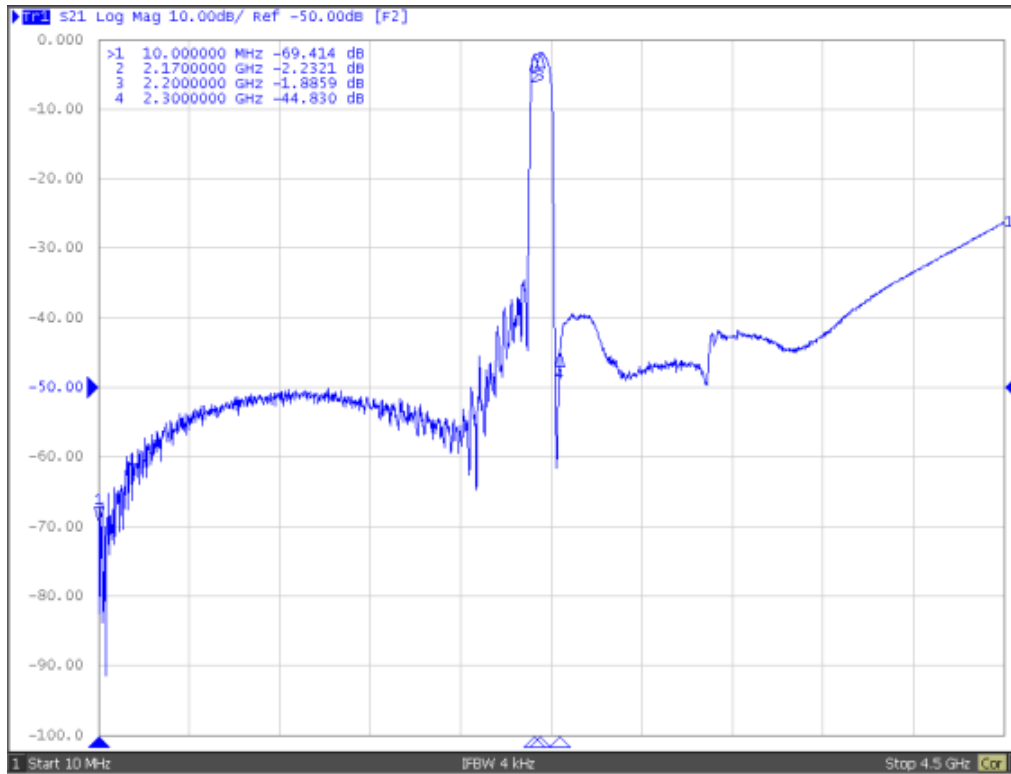
2. S21 Span 200MHz



SAW Filter 2185.0MHz
Part No: MP09828

Model: TA2566A
Rev No: 1

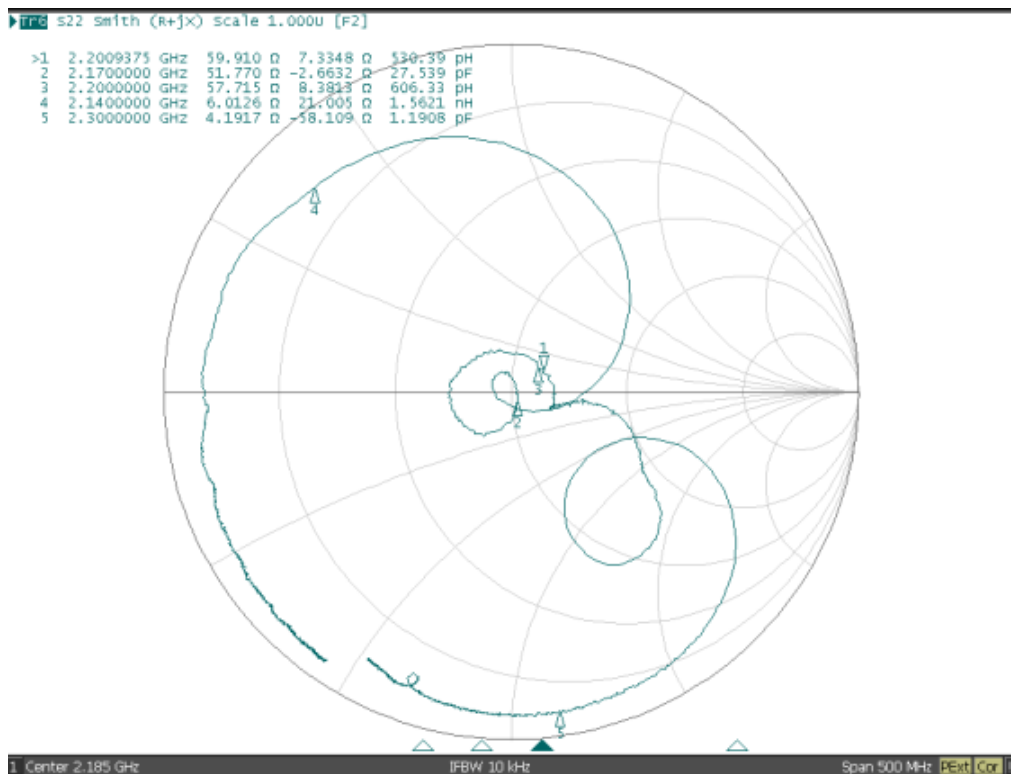
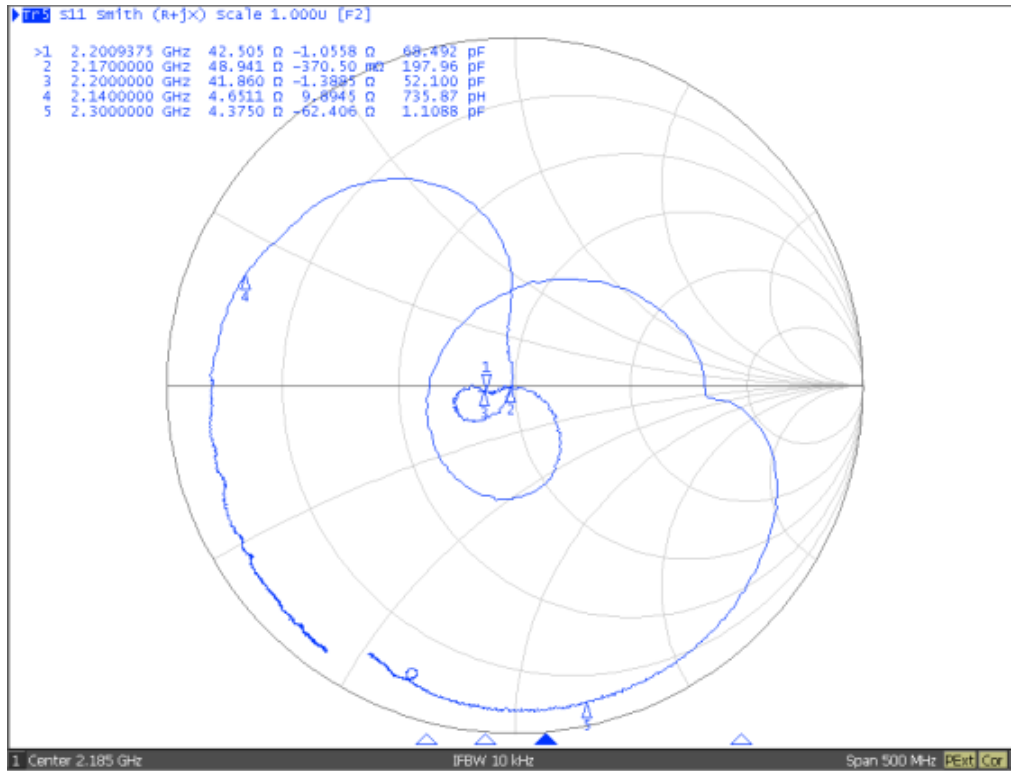
3. S21 Span 4.5GHz



SAW Filter 2185.0MHz
Part No: MP09828

Model: TA2566A
Rev No: 1

4. S11/S22

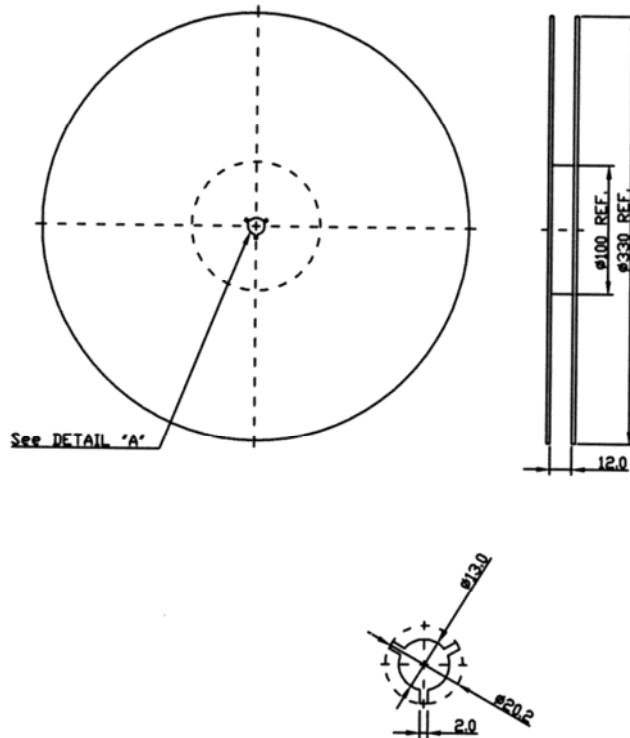


SAW Filter 2185.0MHz
Part No: MP09828

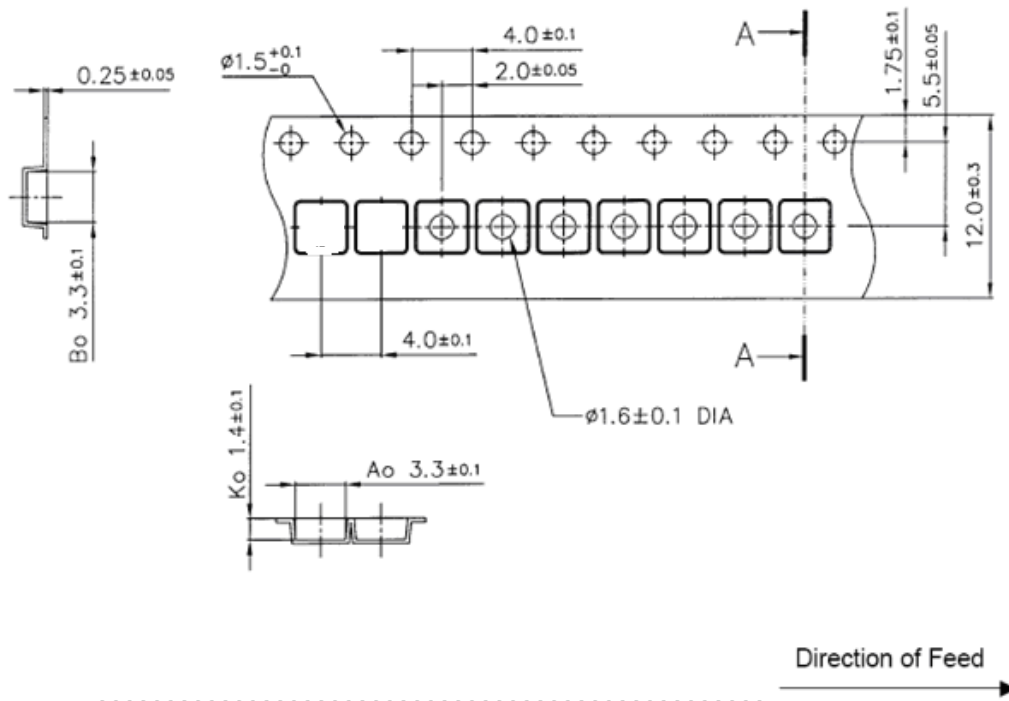
Model: TA2566A
Rev No: 1

G. PACKING:

1. Reel Dimension



2. Tape Dimension



SAW Filter 2185.0MHz
Part No: MP09828

Model: TA2566A
Rev No: 1

H. RECOMMENDED REFLOW PROFILE:

1. Preheating shall be fixed at 150 ~ 180°C for 60 ~ 90 seconds.
2. Ascending time to preheating temperature 150°C shall be 30 seconds min.
3. Heating shall be fixed at 220°C for 50 ~ 80 seconds and at 260°C +0/-5°C peak (20 ~ 40sec).
4. Time: 2 times.

