

SAW Filter 1567.50MHz
Part No: MP09707

Part No: TA1147A
Rev No: 1

A. MAXIMUM RATING:

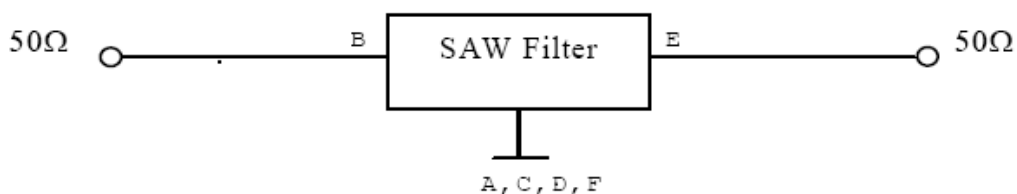
1. Input Power Level: 10dBm
2. DC voltage: 3V
3. Operating Temperature: -40°C to 85°C
4. Storage Temperature: -40°C to +85°C

B. CHARACTERISTICS:

Item	Unit	Min.	Typ.	Max.
Center frequency Fc	MHz	-	1567.5	-
Insertion loss 1525 ~ 1610MHz IL	dB	-	5.5	7
Pass Band Ripple 1525 ~ 1610MHz	dB	-	2.8	5
Group Delay Variation 1525 ~ 1610MHz	ns	-	7	20
Return loss 1525 ~ 1610MHz	dB	8	11	-
Attenuation (Reference level from 0dB)				
10 ~ 1400MHz	dB	25	31	-
1400 ~ 1450MHz	dB	20	29	-
1650 ~ 1700MHz	dB	5	9	-
1700 ~ 2000MHz	dB	35	37	-
Source impedance Z _S	Ω	-	50	-
Load impedance Z _L	Ω	-	50	-

C. MEASUREMENT CIRCUIT:

HP Network analyzer

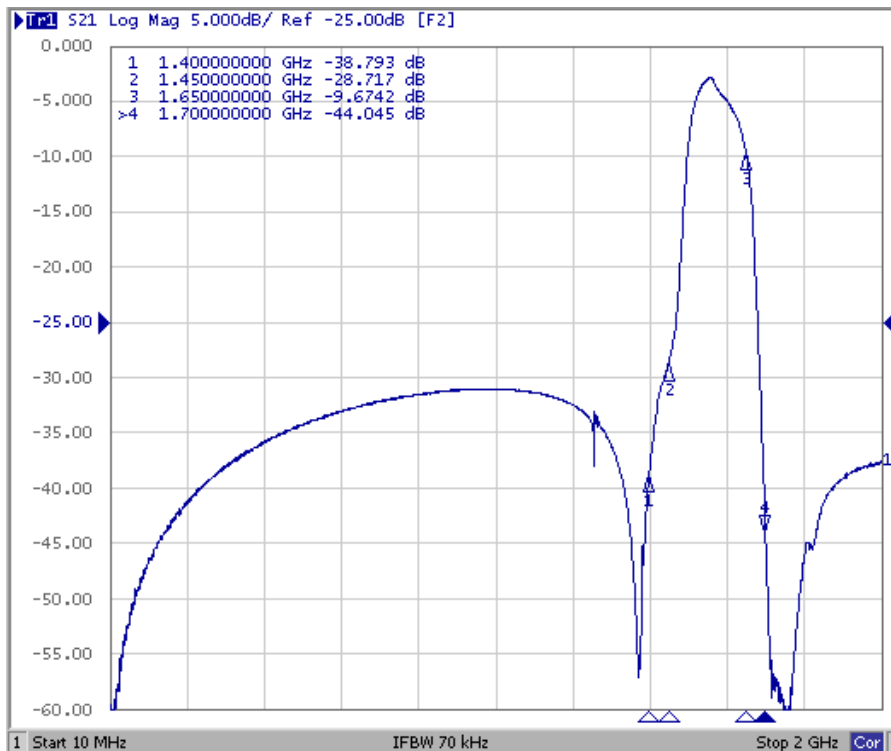
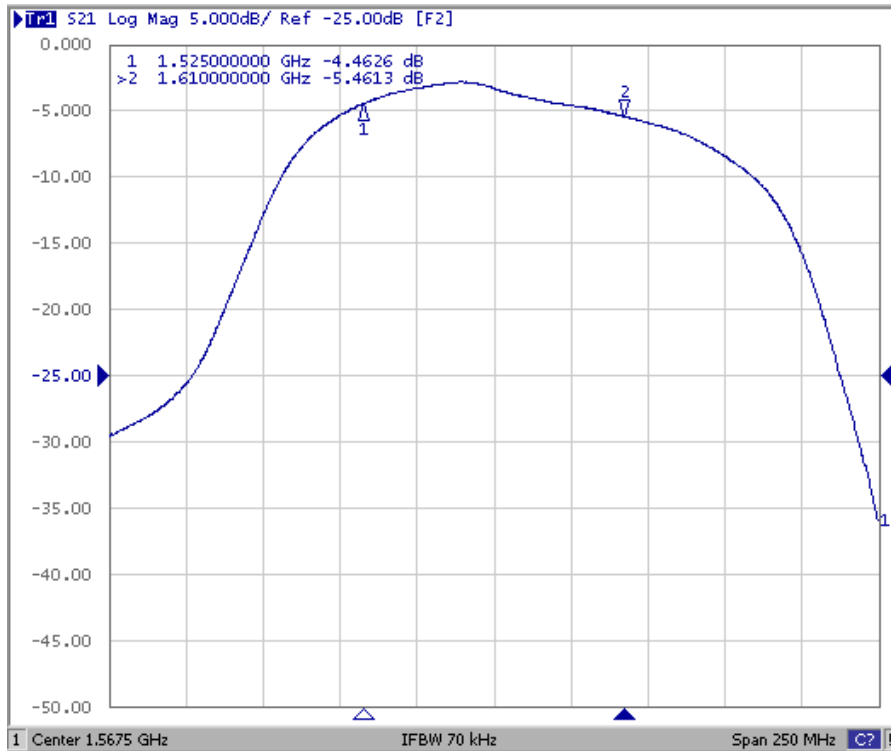


SAW Filter 1567.50MHz
Part No: MP09707

Part No: TA1147A
Rev No: 1

D. FREQUENCY CHARACTERISTICS:

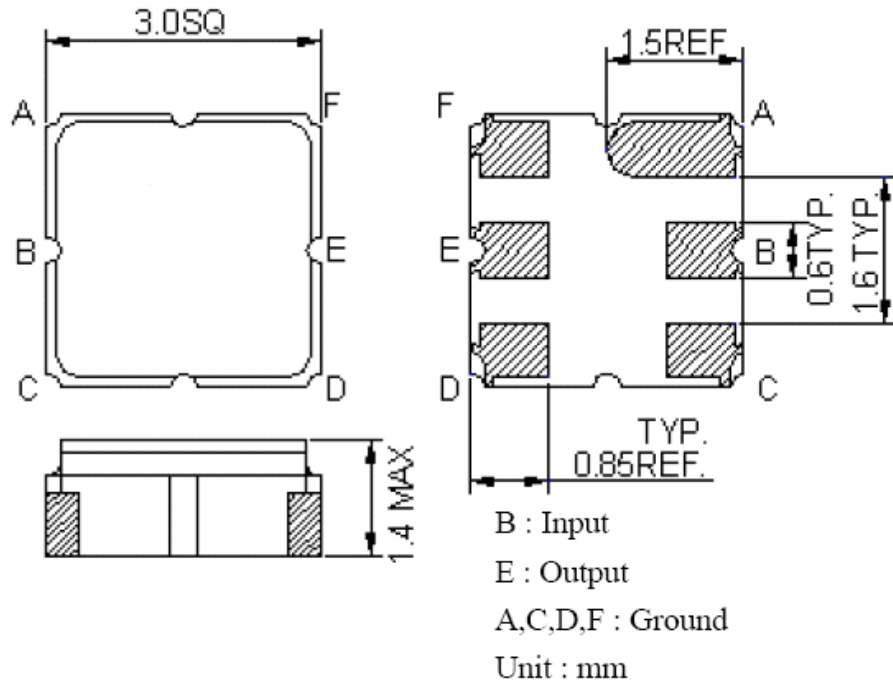
Transfer Functions



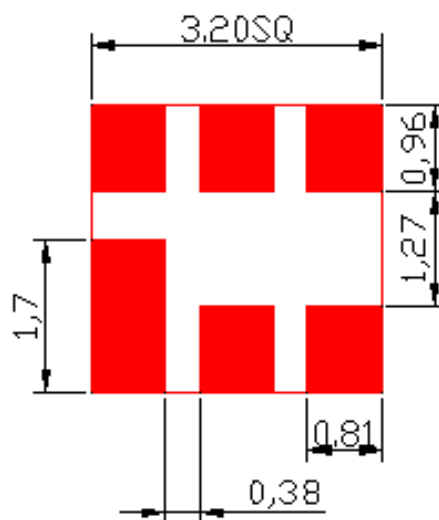
SAW Filter 1567.50MHz
Part No: MP09707

Part No: TA1147A
Rev No: 1

E. OUTLINE DRAWING:



F. PCB FOOTPRINT:

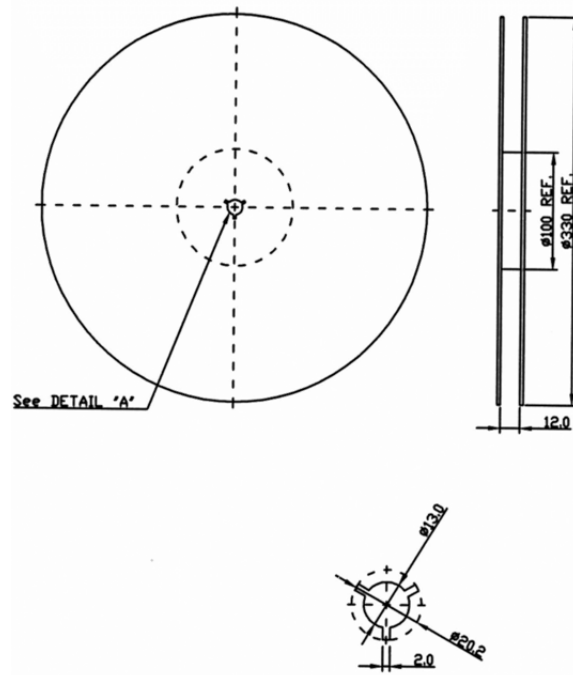


SAW Filter 1567.50MHz
Part No: MP09707

Part No: TA1147A
Rev No: 1

G. PACKING:

1. Reel Dimension



2. Tape Dimension

