

SAW Filter 1192.0MHz
Part No: MP09579

Model: TA2242A
Rev No: 1

A. MAXIMUM RATING:

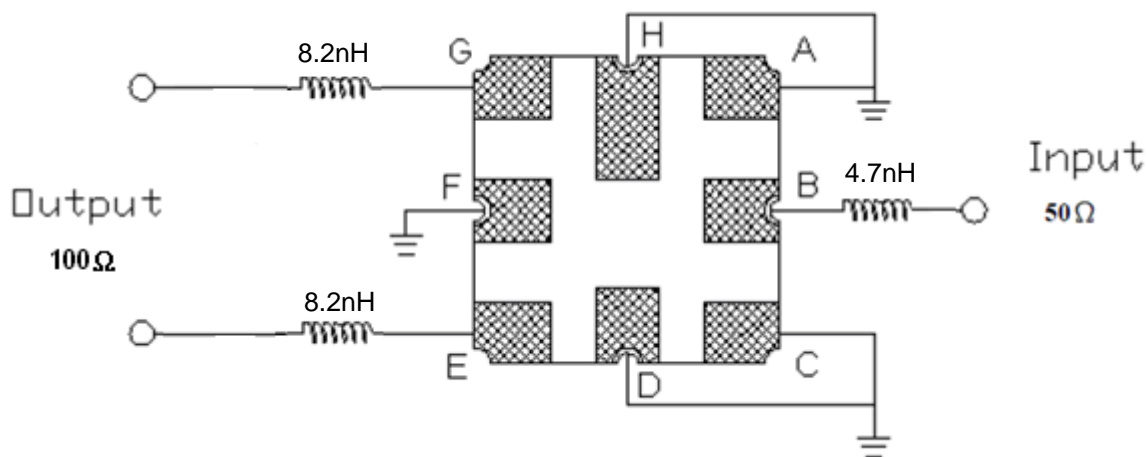
Electrostatic Sensitive Device (ESD)

1. Input Power Level: 10dBm
2. DC voltage: 3V
3. Operating Temperature: -40°C to +85°C
4. Storage Temperature: -40°C to +85°C

B. ELECTRICAL CHARACTERISTICS:

Item	Unit	Min.	Typ.	Max.
Center Frequency Fc	MHz	-	1192	-
Insertion Loss (1160 ~ 1224MHz)	dB	-	5.6	6.5
Amplitude ripple (1160 ~ 1224MHz)	dB	-	1.4	2.4
VSWR (1160 ~ 1224MHz)	-	-	1.9	2.6
Attenuation (Reference level from 0dB)				
50 ~ 1040MHz	dB	40	49	-
1040 ~ 1110MHz	dB	25	31	-
1300 ~ 1430MHz	dB	30	40	-
1430 ~ 2000MHz	dB	40	48	-
Temperature coefficient of frequency	ppm/k	-	-80	-

C. MEASUREMENT CIRCUIT:



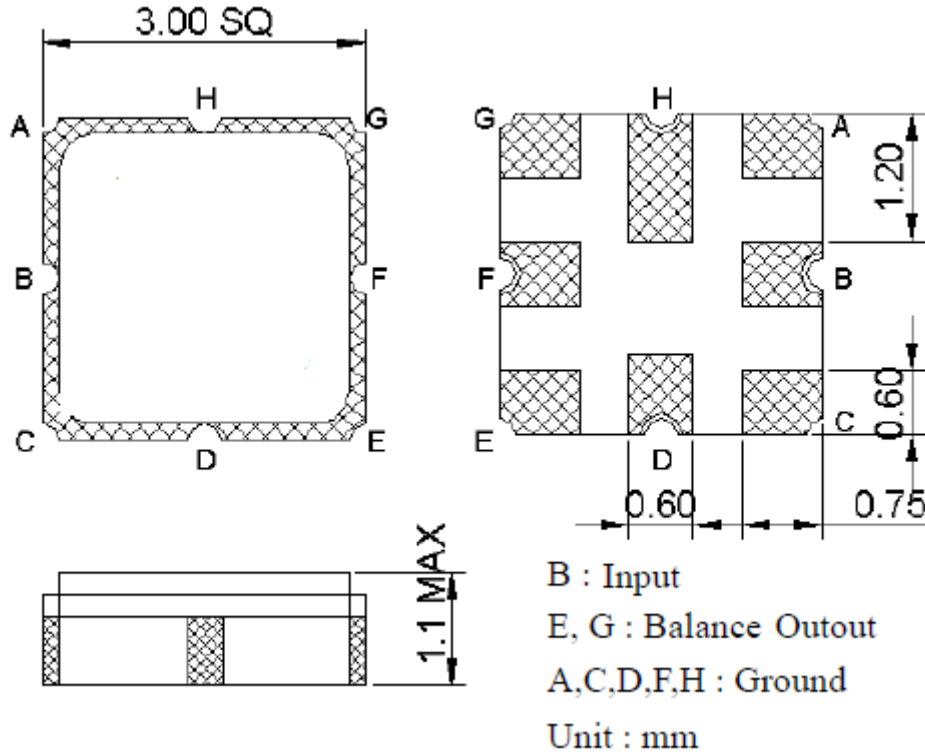
SAW Filter 1192.0MHz

Model: TA2242A

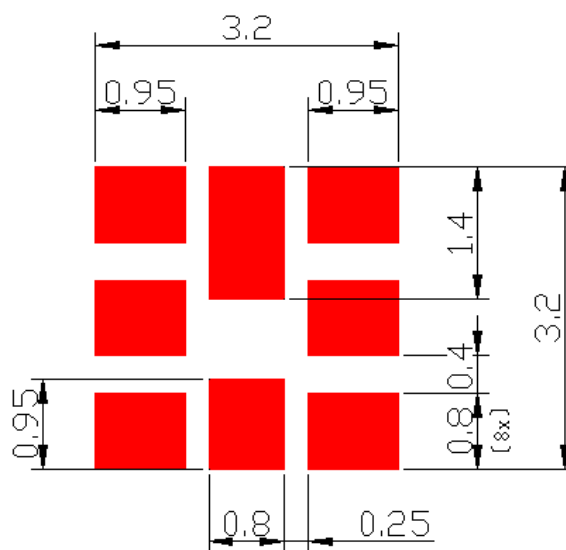
Part No: MP09579

Rev No: 1

D. OUTLINE DRAWING:



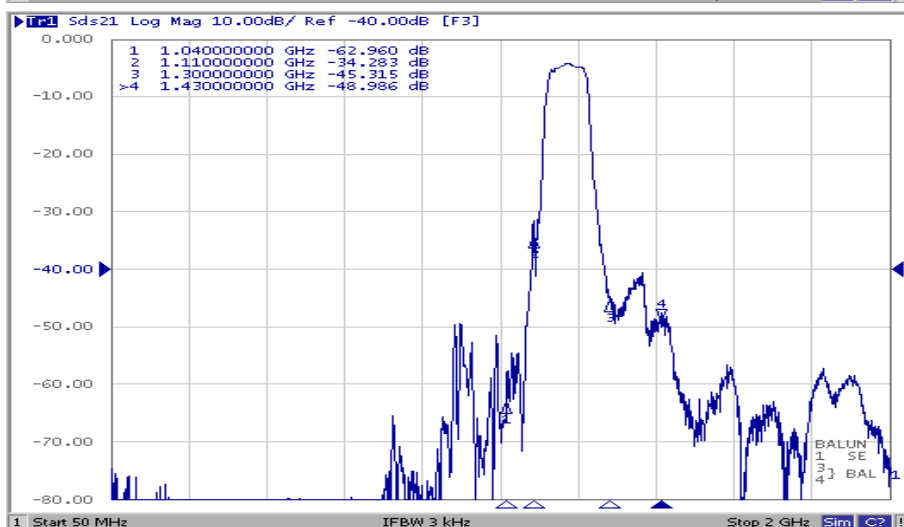
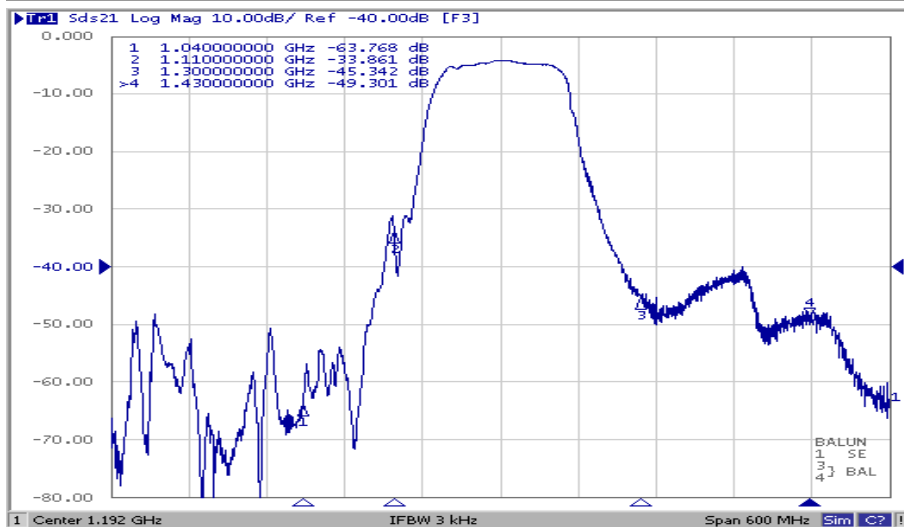
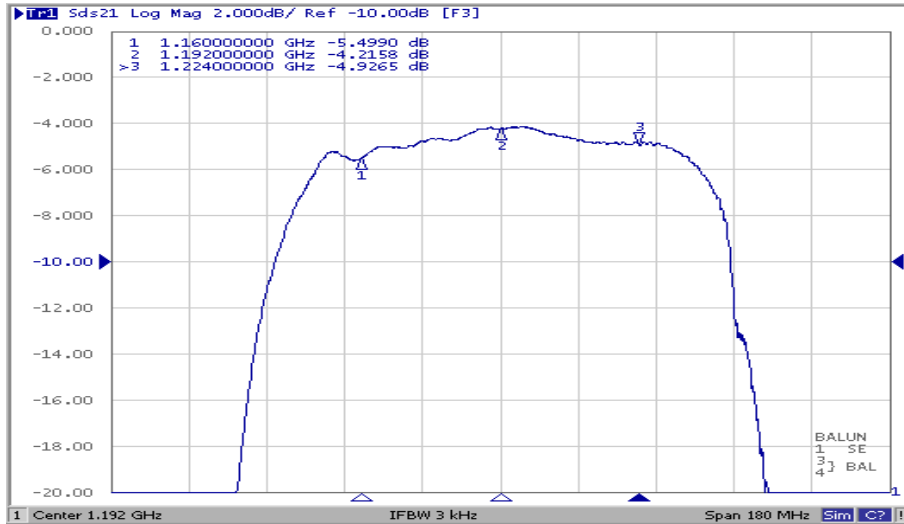
E. PCB FOOTPRINT:



SAW Filter 1192.0MHz
Part No: MP09579

Model: TA2242A
Rev No: 1

F. FREQUENCY CHARACTERISTICS:

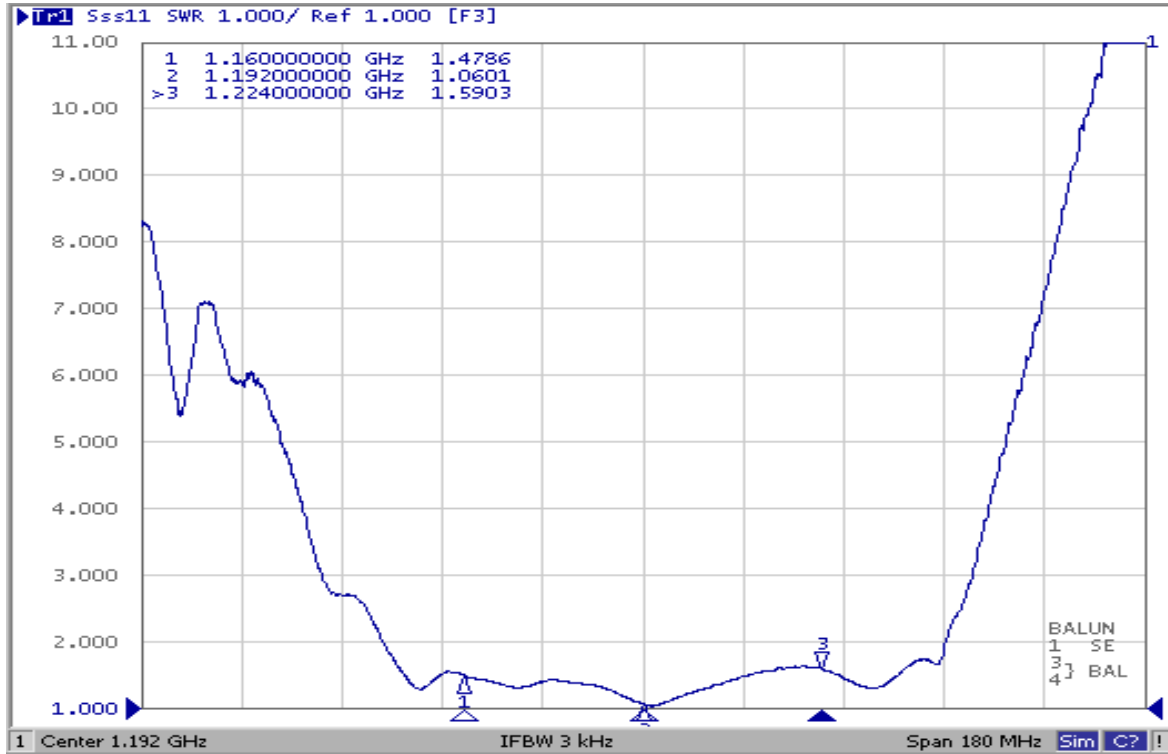


SAW Filter 1192.0MHz
Part No: MP09579

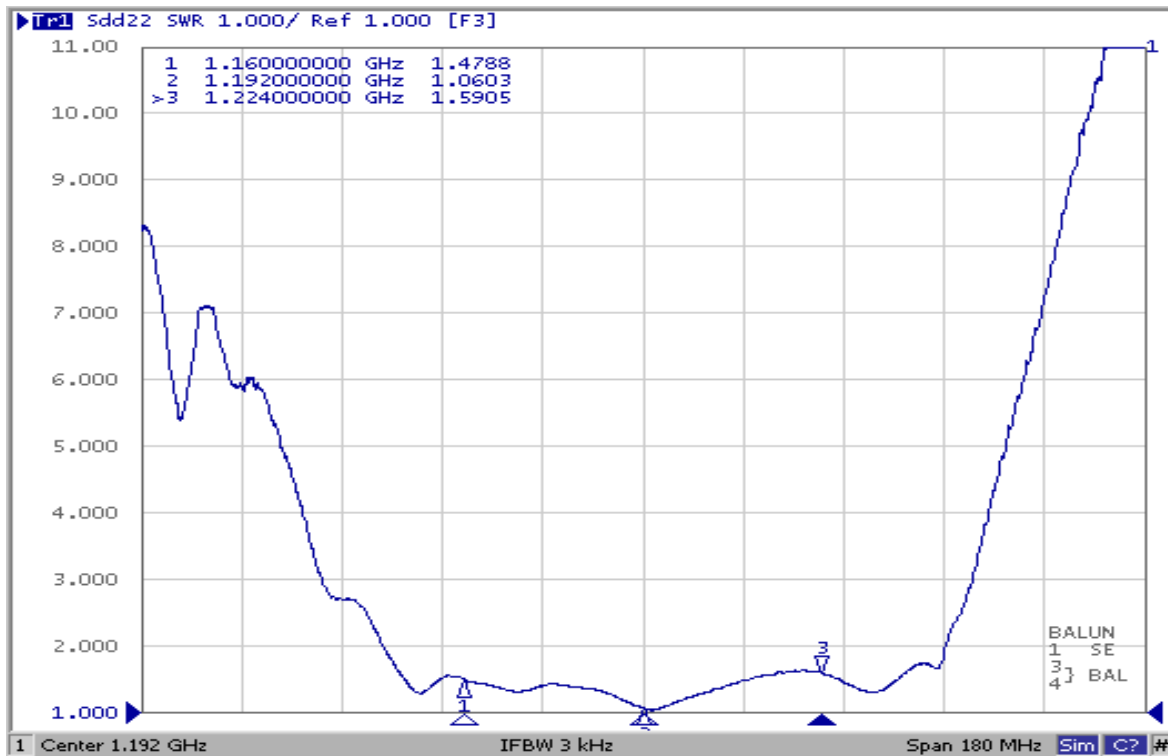
Model: TA2242A
Rev No: 1

Reflection Functions

S11



S22

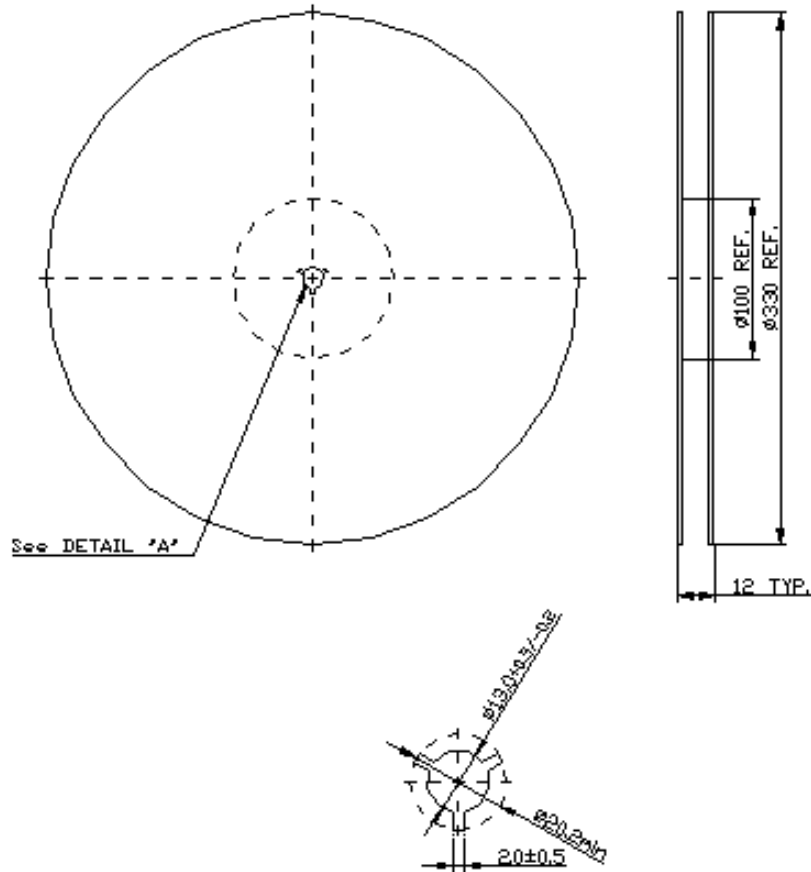


SAW Filter 1192.0MHz
Part No: MP09579

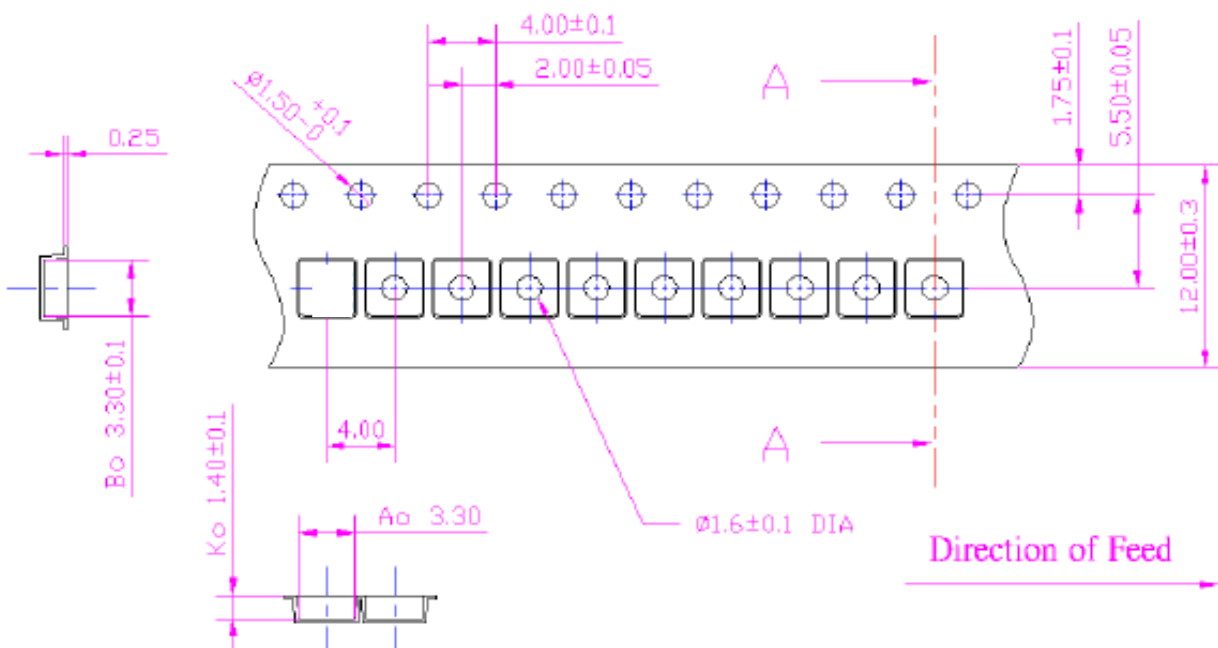
Model: TA2242A
Rev No: 1

G. PACKING:

1. Reel Dimension



2. Tape Dimension



SAW Filter 1192.0MHz
Part No: MP09579

Model: TA2242A
Rev No: 1

H. RECOMMENDED REFLOW PROFILE:

1. Preheating shall be fixed at 150 ~ 180°C for 60 ~ 90 seconds.
2. Ascending time to preheating temperature 150°C shall be 30 seconds min.
3. Heating shall be fixed at 220°C for 50 ~ 80 seconds and at 260°C +0/-5°C peak (20 ~ 40 sec).
4. Time: 2 times.

