

**SAW Filter 1257.0MHz**

**Model: TA2241A**

**Part No: MP09573**

**Rev No: 1**

**A. MAXIMUM RATING:**

Electrostatic Sensitive Device (ESD)

1. Input Power Level: 10dBm
2. DC voltage: 3V
3. Operating Temperature: -40°C to +85°C
4. Storage Temperature: -40°C to +85°C

**B. ELECTRICAL CHARACTERISTICS:**

Item	Unit	Min.	Typ.	Max.
Center Frequency Fc	MHz	-	1257	-
Insertion Loss (1218 ~ 1296MHz)	dB	-	5.7	6.5
Amplitude ripple (1218 ~ 1296MHz)	dB	-	1.1	2.5
VSWR (1218 ~ 1296MHz)	-	-	1.8	2.7
Attenuation (Reference level from 0dB)				
50 ~ 1090MHz	dB	40	51	-
1090 ~ 1165MHz	dB	25	36	-
1370 ~ 1496MHz	dB	30	41	
1496 ~ 2000MHz	dB	40	48	
Temperature coefficient of frequency	ppm/k	-	-80	-

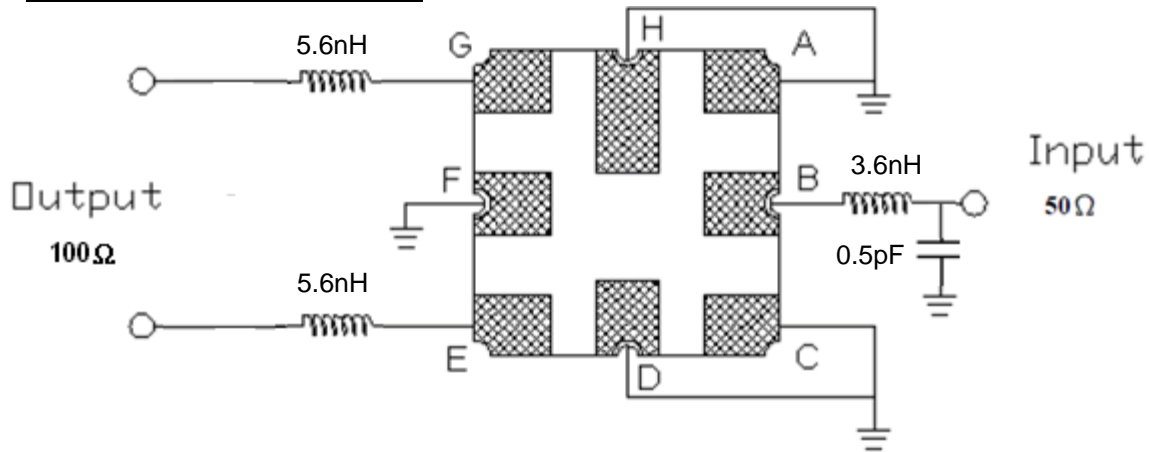
**SAW Filter 1257.0MHz**

**Model: TA2241A**

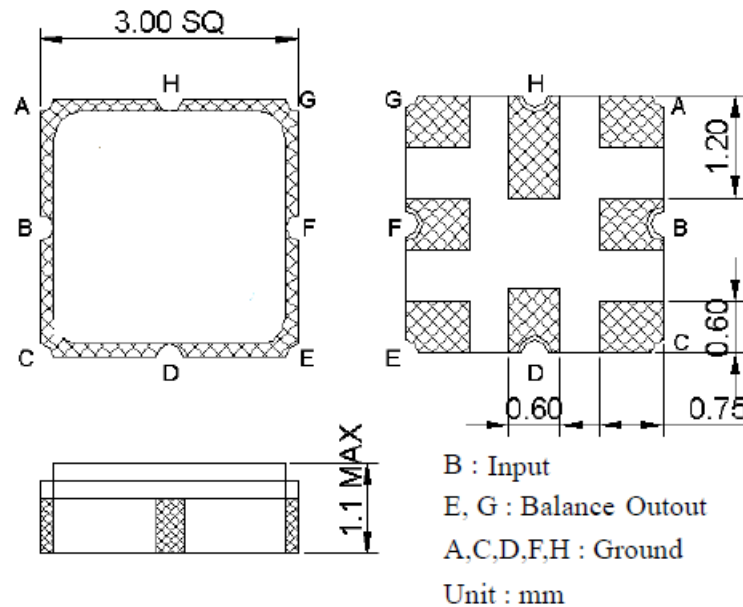
**Part No: MP09573**

**Rev No: 1**

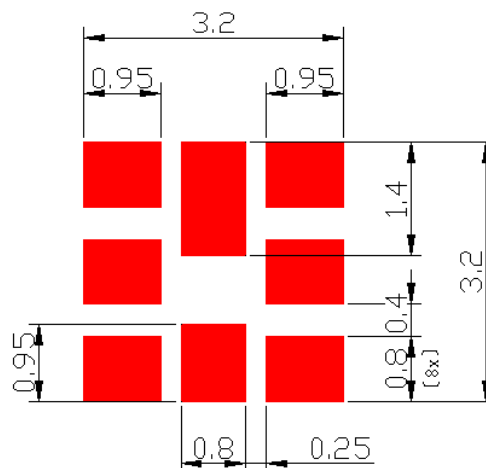
**C. MEASUREMENT CIRCUIT:**



**D. OUTLINE DRAWING:**



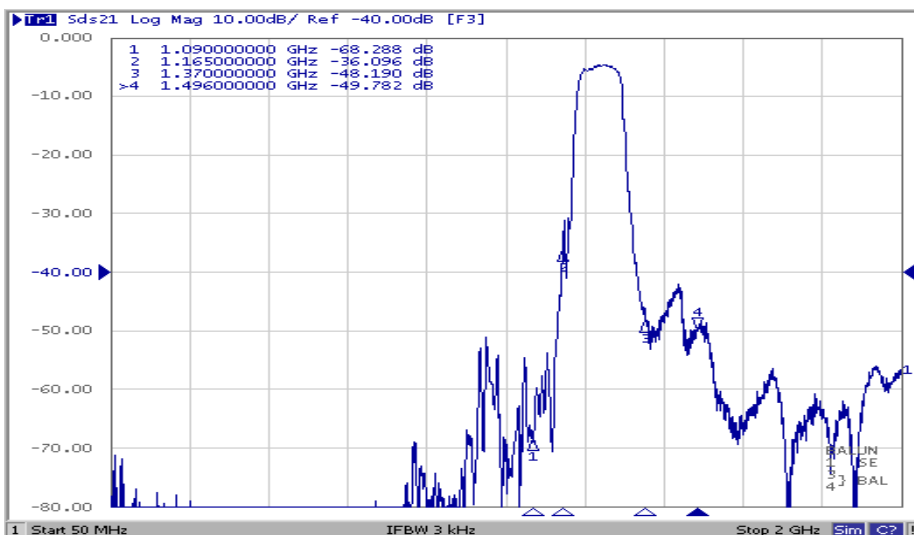
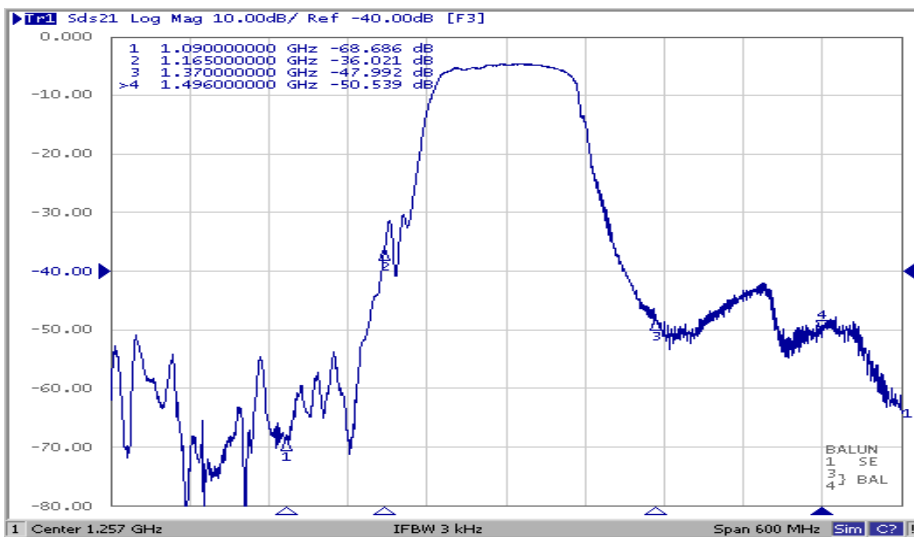
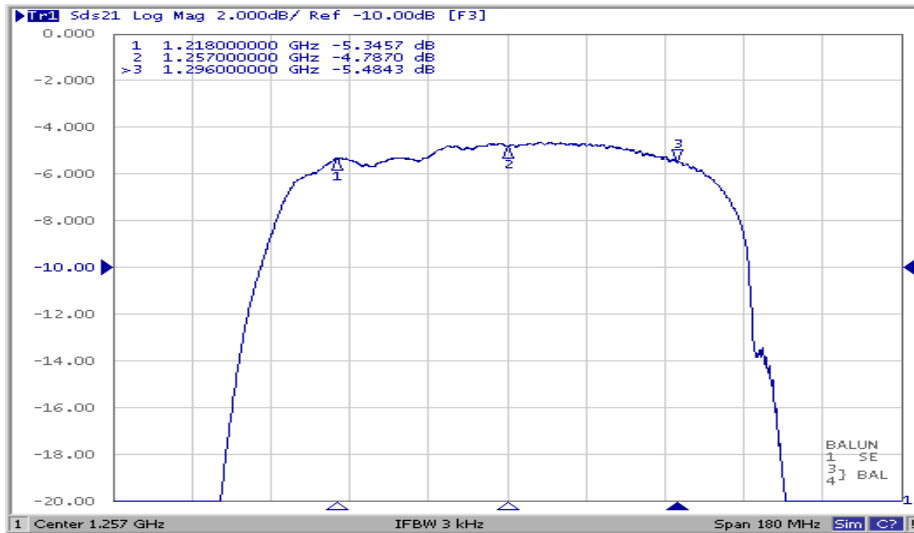
**E. PCB FOOTPRINT:**



**SAW Filter 1257.0MHz**  
**Part No: MP09573**

**Model: TA2241A**  
**Rev No: 1**

**F. FREQUENCY CHARACTERISTICS:**

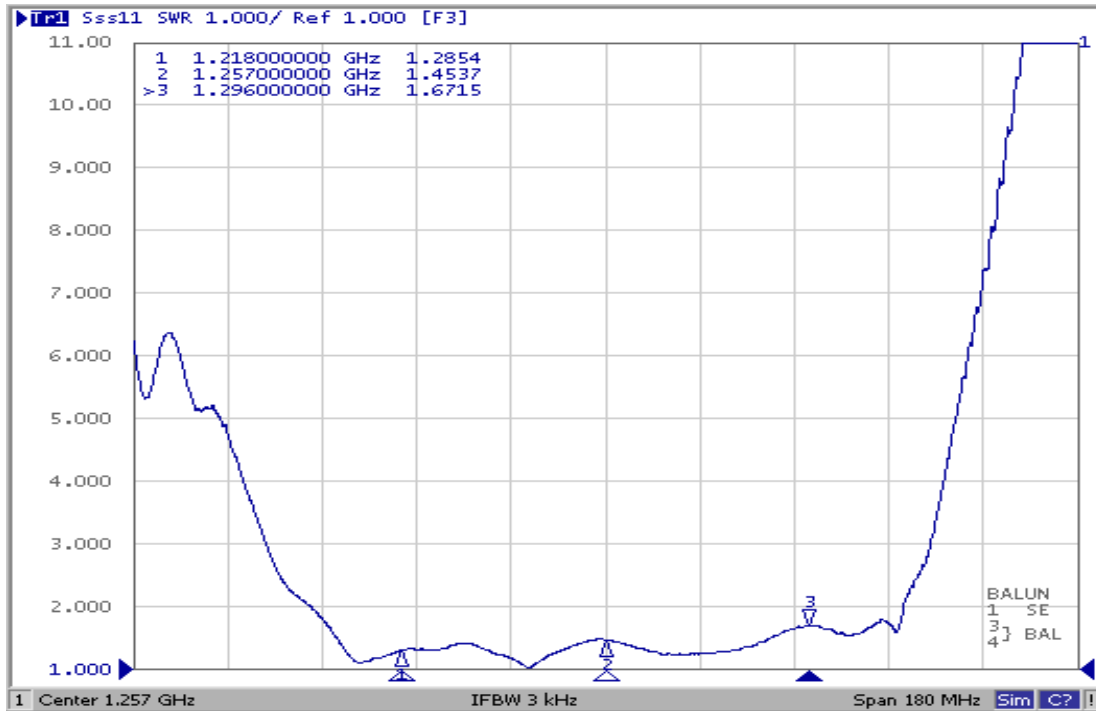


**SAW Filter 1257.0MHz**  
**Part No: MP09573**

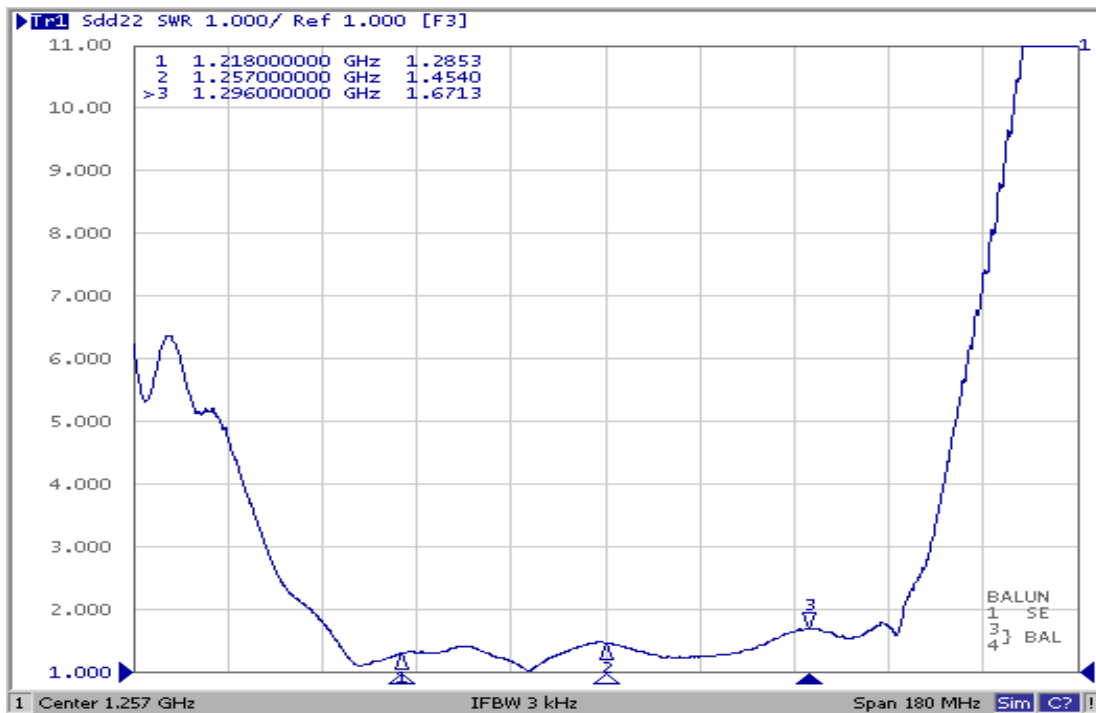
**Model: TA2241A**  
**Rev No: 1**

Reflection Functions

S11



S22





**SAW Filter 1257.0MHz**  
**Part No: MP09573**

**Model: TA2241A**  
**Rev No: 1**

**H. RECOMMENDED REFLOW PROFILE:**

1. Preheating shall be fixed at 150 ~ 180°C for 60 ~ 90 seconds.
2. Ascending time to preheating temperature 150°C shall be 30 seconds min.
3. Heating shall be fixed at 220°C for 50 ~ 80 seconds and at 260°C +0/-5°C peak (20 ~ 40 sec).
4. Time: 2 times.

