

SAW Filter 1650.50MHz

Part No: MP06762

Rev No: 2

A. MAXIMUM RATING:

Electrostatic Sensitive Device (ESD)

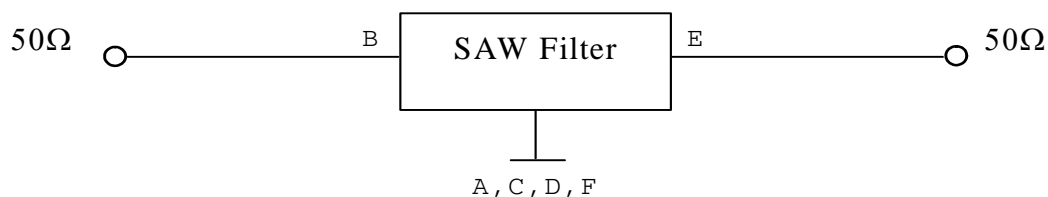
1. Input Power Level: 16dBm
2. DC voltage: 3V
3. Operating Temperature: -40°C to +85°C
4. Storage Temperature: -40°C to +85°C
5. Moisture Sensitivity Level: Level 1 (MSL1)

B. ELECTRICAL CHARACTERISTICS:

Item	Unit	Min.	Typ.	Max.
Center frequency Fc	MHz	-	1650.5	-
Insertion loss (1626 ~ 1675MHz) IL	dB	-	4.1	5.0
Amplitude Ripple (1626 ~ 1675MHz)	dB	-	0.9	2.0
Attenuation (Reference level from 0dB)				
1170 ~ 1219MHz	dB	34	54	-
1398 ~ 1447MHz	dB	29	50	-
Temperature Coefficient of Frequency	ppm/°C	-	-36	-

C. MEASUREMENT CIRCUIT:

HP Network analyzer

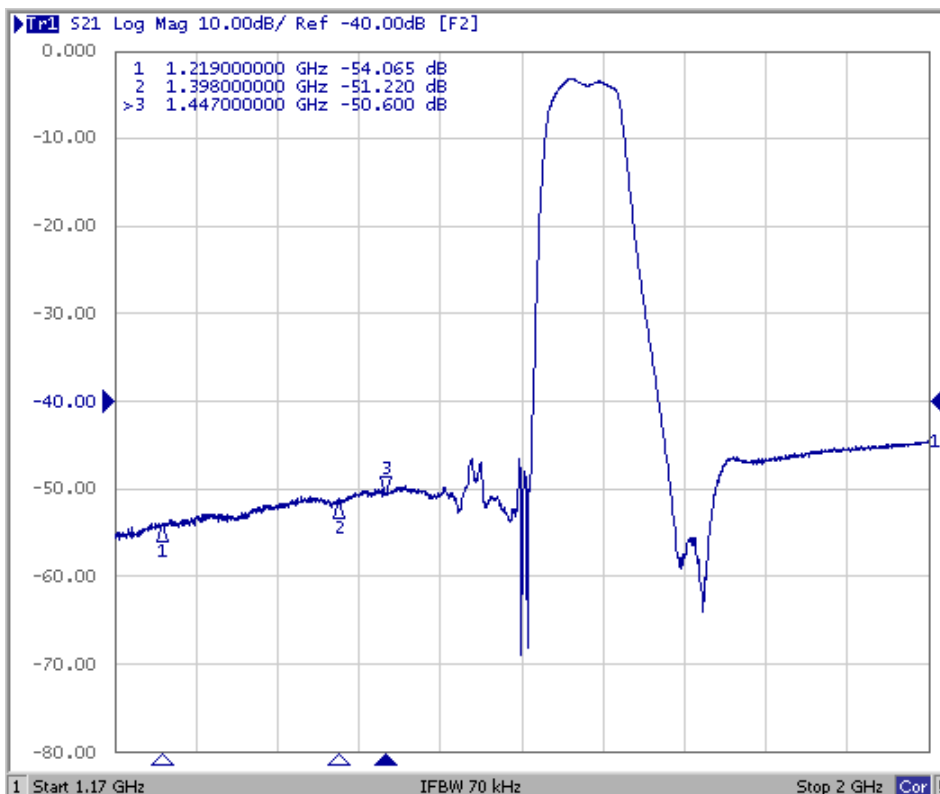
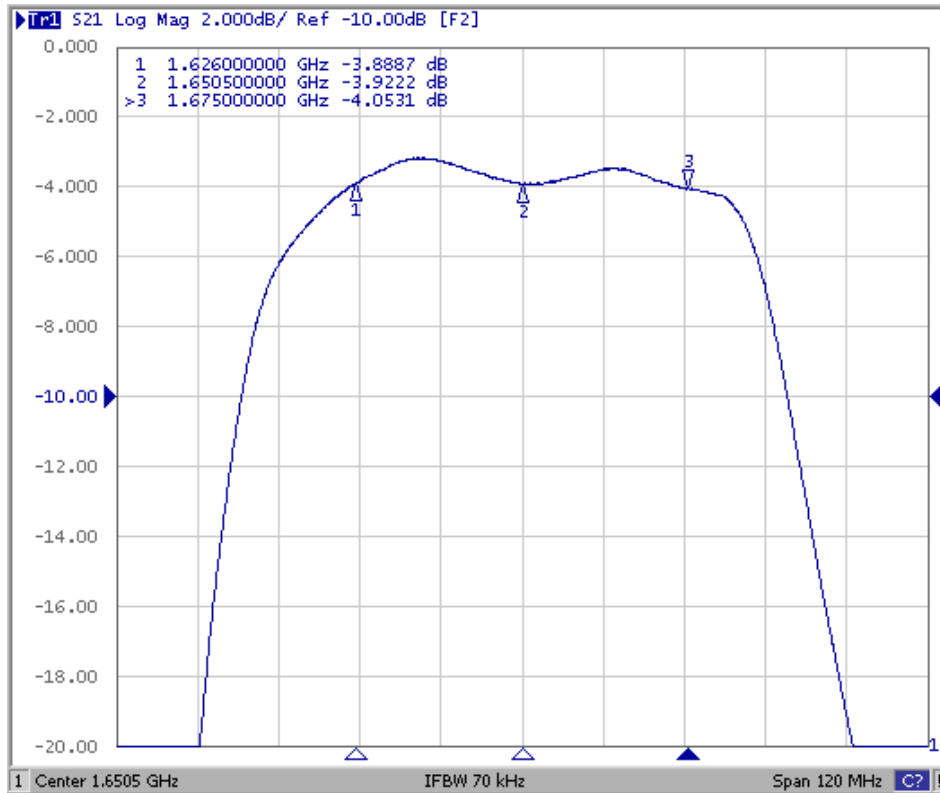


SAW Filter 1650.50MHz

Part No: MP06762

Rev No: 2

D. FREQUENCY CHARACTERISTICS:

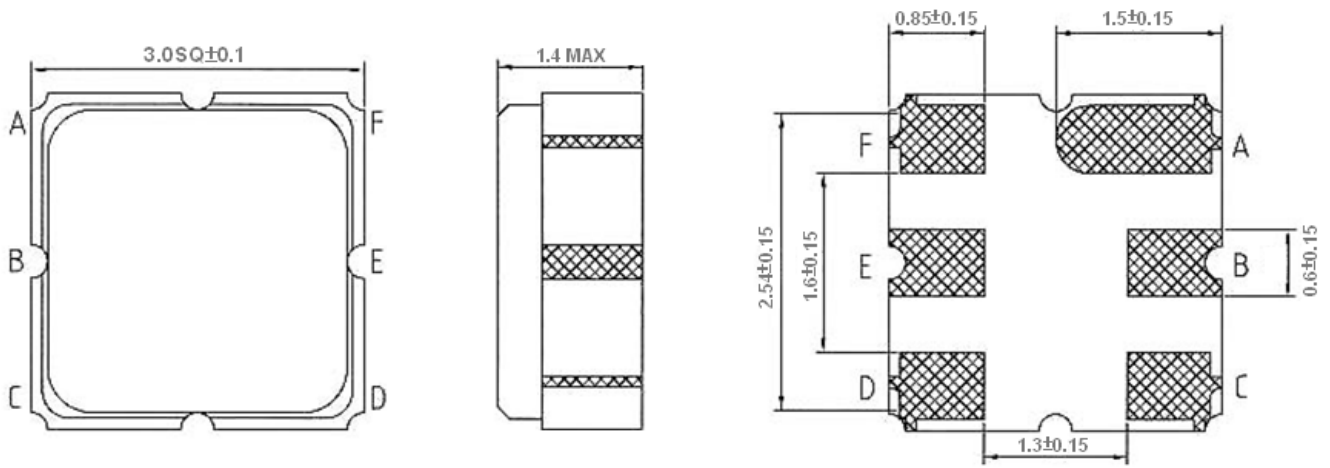


SAW Filter 1650.50MHz

Part No: MP06762

Rev No: 2

E. OUTLINE DRAWING:



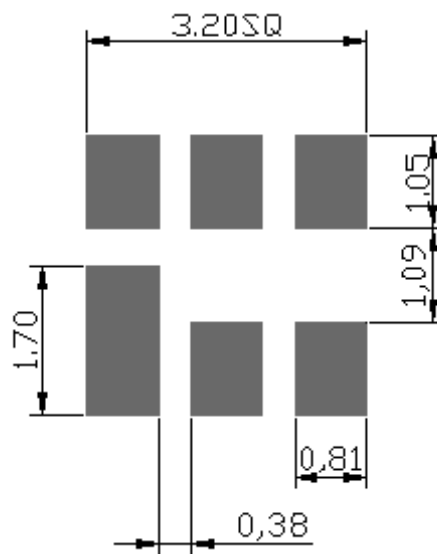
B: Input

E: Output

A, C, D, F: Ground

Unit: mm

F. PCB FOOTPRINT:



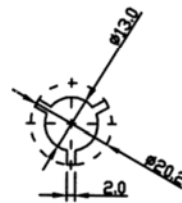
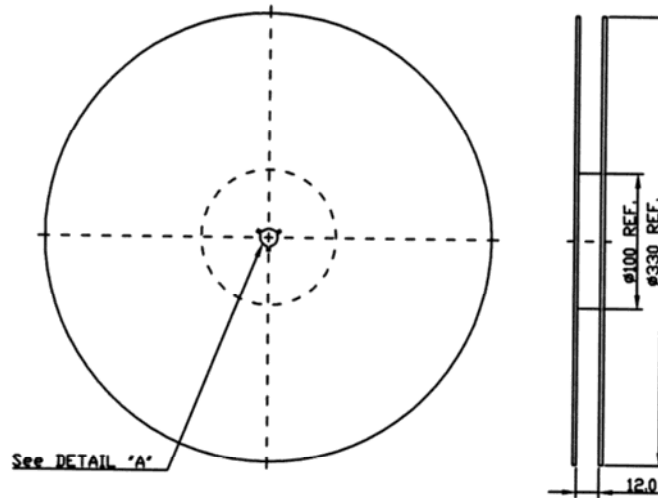
SAW Filter 1650.50MHz

Part No: MP06762

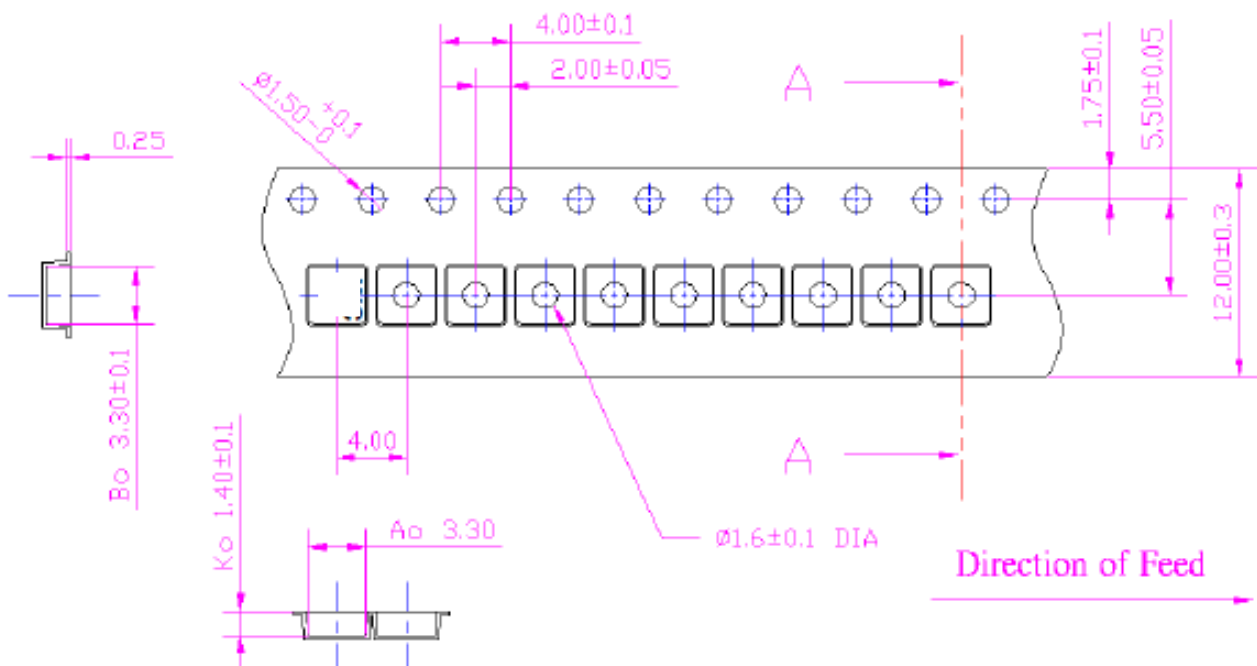
Rev No: 2

G. PACKING:

1. Reel Dimension



2. Tape Dimension



SAW Filter 1650.50MHz

Part No: MP06762

Rev No: 2

H. RECOMMENDED REFLOW PROFILE:

1. Preheating shall be fixed at 150 ~ 180°C for 60 ~ 90 seconds.
2. Ascending time to preheating temperature 150°C shall be 30 seconds min.
3. Heating shall be fixed at 220°C for 50 ~ 80 seconds and at 260°C +0/-5°C peak (20 ~ 40 sec).
4. Time: 2 times.

