

SAW Filter 954.30MHz

Model: TA1737A

Part No: MP08673

Rev No: 1

A. MAXIMUM RATING:

Electrostatic Sensitive Device (ESD)

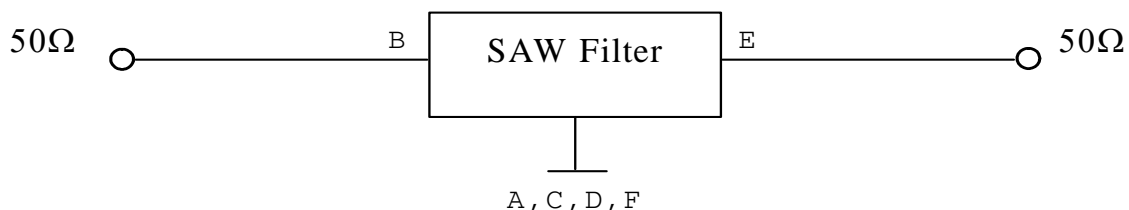
1. Input Power Level: 10dBm
2. DC voltage: 3V
3. Operating Temperature: -40°C to +85°C
4. Storage Temperature: -40°C to +85°C

B. ELECTRICAL CHARACTERISTICS:

Item	Unit	Min.	Typ.	Max.
Center frequency Fc	MHz	-	954.3	-
Insertion Loss (949.3 ~ 959.3MHz) IL	dB	-	1.6	3.0
Amplitude Ripple (949.3 ~ 959.3MHz)	dB	-	0.3	1.8
VSWR (949.3 ~ 959.3MHz)	-	-	1.5	2.0
Attenuation (Reference level from 0dB)				
355 ~ 920MHz	dB	33	41	-
985 ~ 1555MHz	dB	35	44	-
Temperature coefficient of frequency	ppm/k	-	-36	-

C. MEASUREMENT CIRCUIT:

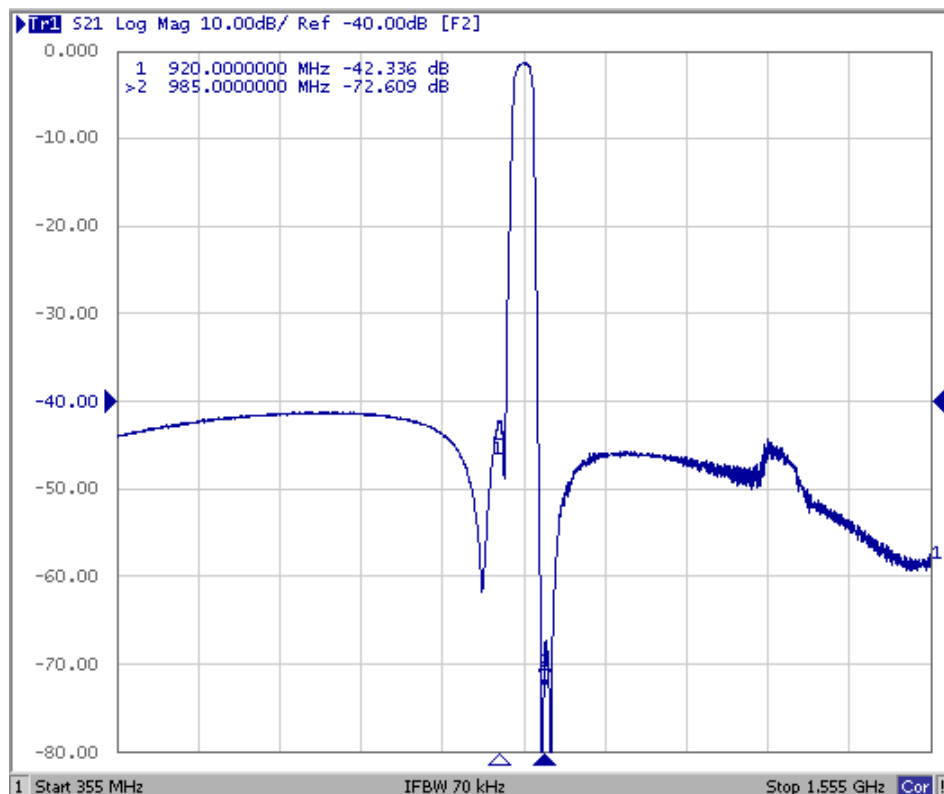
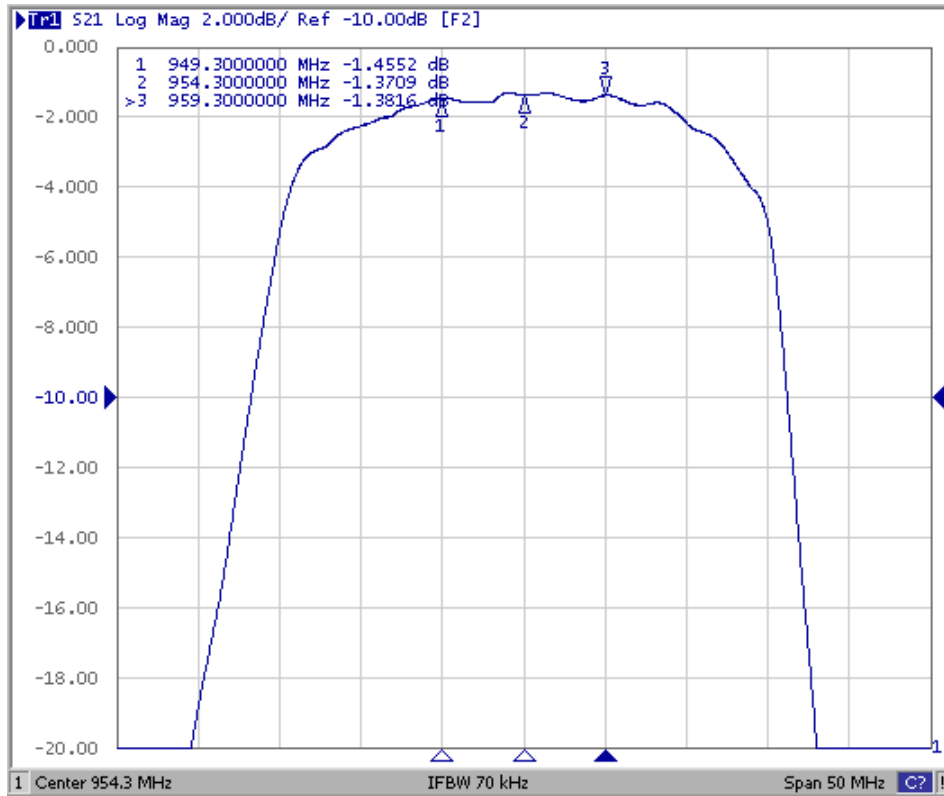
HP Network analyzer



SAW Filter 954.30MHz
Part No: MP08673

Model: TA1737A
Rev No: 1

D. FREQUENCY CHARACTERISTICS:

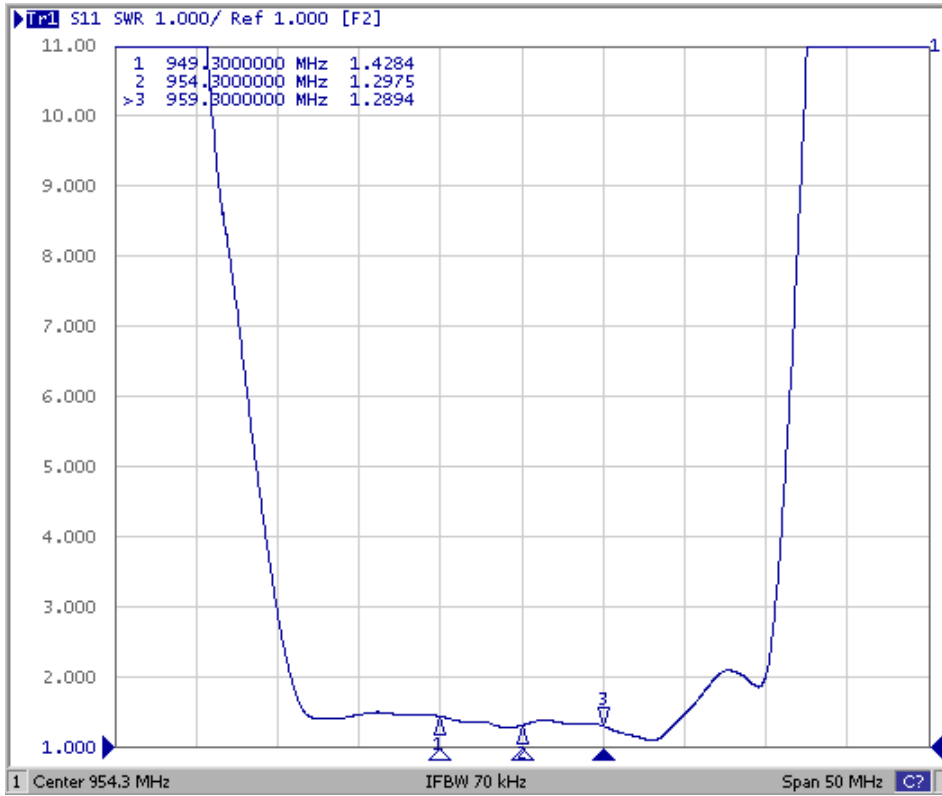


SAW Filter 954.30MHz
Part No: MP08673

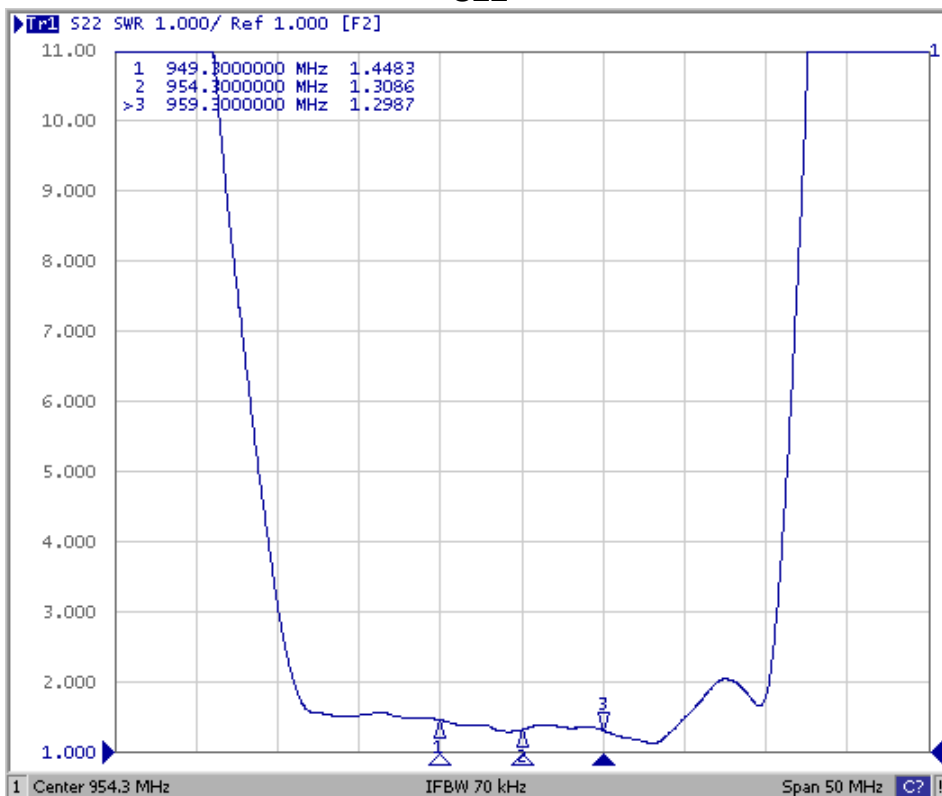
Model: TA1737A
Rev No: 1

Reflection Functions

S11



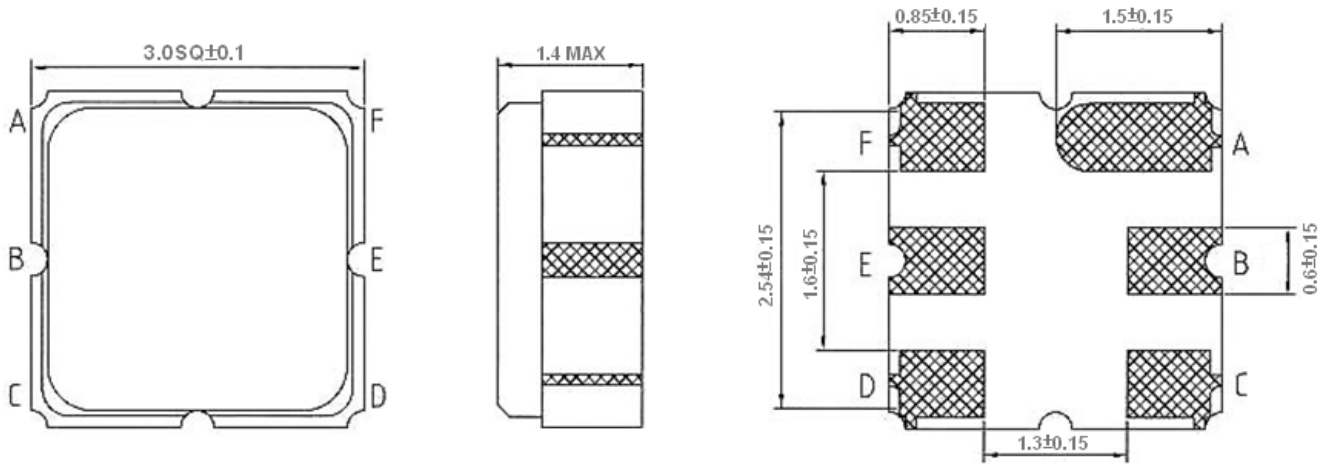
S22



SAW Filter 954.30MHz
Part No: MP08673

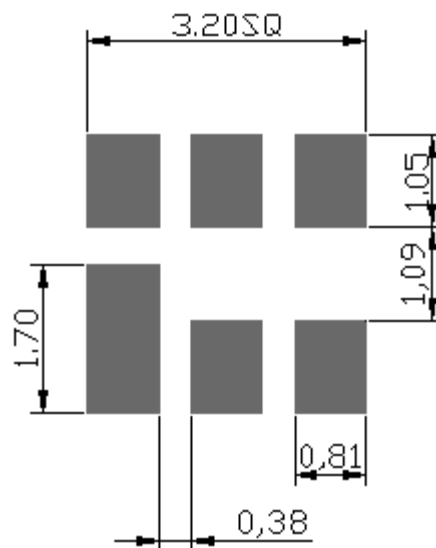
Model: TA1737A
Rev No: 1

E. OUTLINE DRAWING:



B: Input
 E: Output
 A, C, D, F: Ground
 Unit: mm

F. PCB FOOTPRINT:

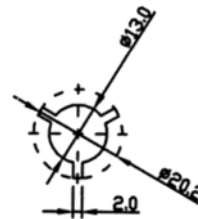
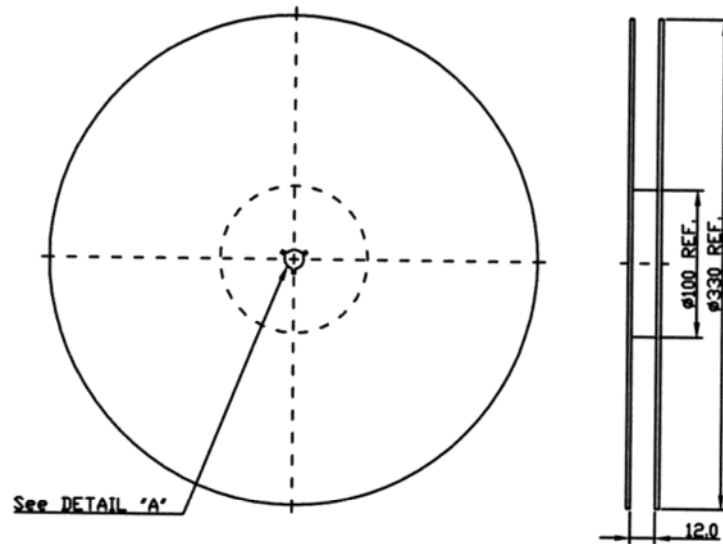


SAW Filter 954.30MHz
Part No: MP08673

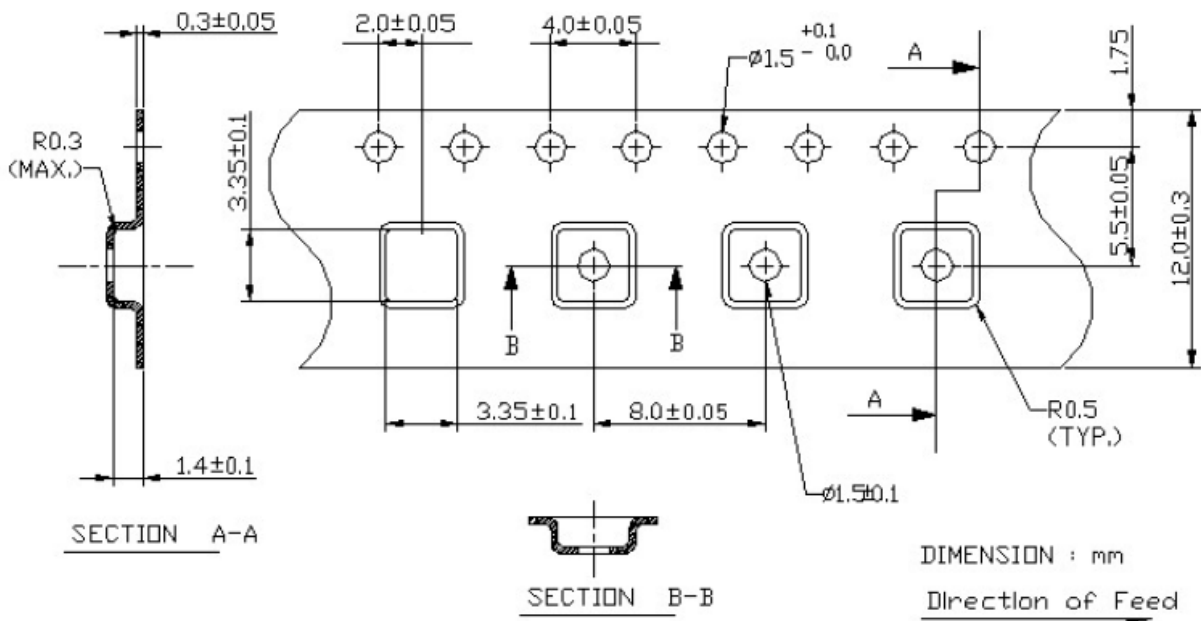
Model: TA1737A
Rev No: 1

G. PACKING:

1. Reel Dimension



2. Tape Dimension



SAW Filter 954.30MHz
Part No: MP08673

Model: TA1737A
Rev No: 1

H. RECOMMENDED REFLOW PROFILE:

