

SAW Filter 433.920MHz
Part No: MP08599

Model: TA0649C
Rev No: 1

A. MAXIMUM RATING:

Electrostatic Sensitive Device

1. Input Power Level: 10dBm
2. DC voltage: 0V
3. Operating Temperature: -40°C to 85°C
4. Storage Temperature: -40°C to +85°C

B. CHARACTERISTICS:

Item	Unit	Min.	Typ.	Max.
Center frequency Fc	MH	-	433.92	-
Insertion loss 433.00 ~ 434.71MHz IL	dB	-	2.0	2.7
Amplitude ripple 433.00 ~ 434.71MHz	dB	-	0.3	1.3
Attenuation (Reference level from 0dB)				
389.0 ~ 392.0MHz	dB	42	54	-
411.0 ~ 414.0MHz	dB	40	50	-
454.0 ~ 457.0MHz	dB	40	51	-
475.5 ~ 478.5MHz	dB	42	52	-
Source impedance Z _S	Ω	-	50	-
Load impedance Z _L	Ω	-	50	-

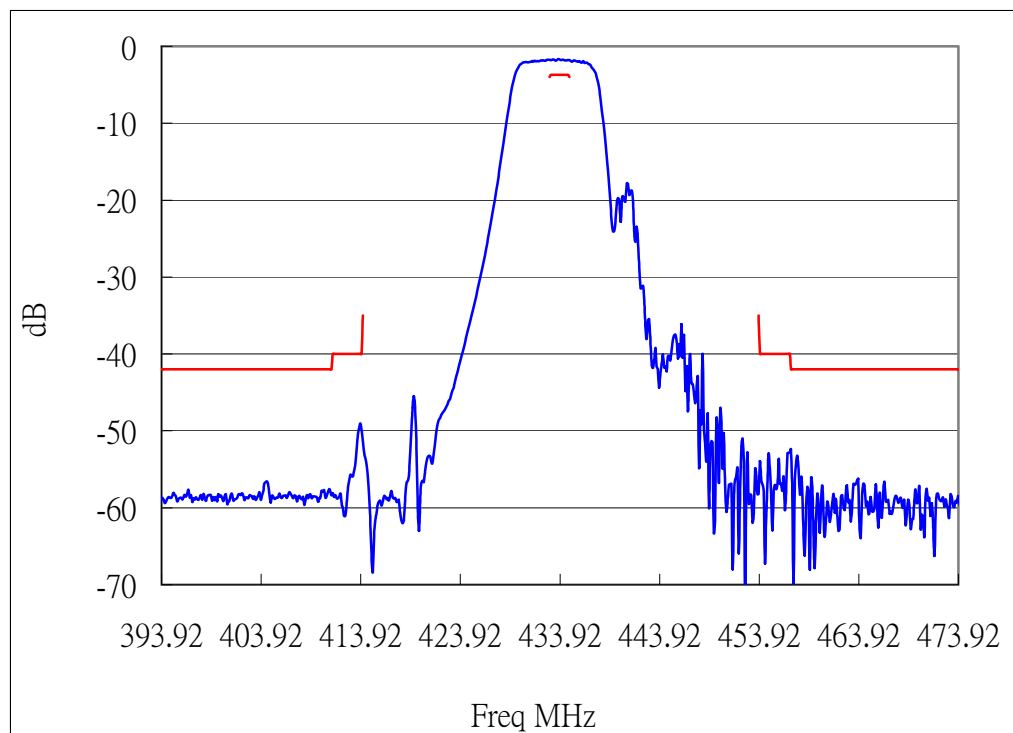
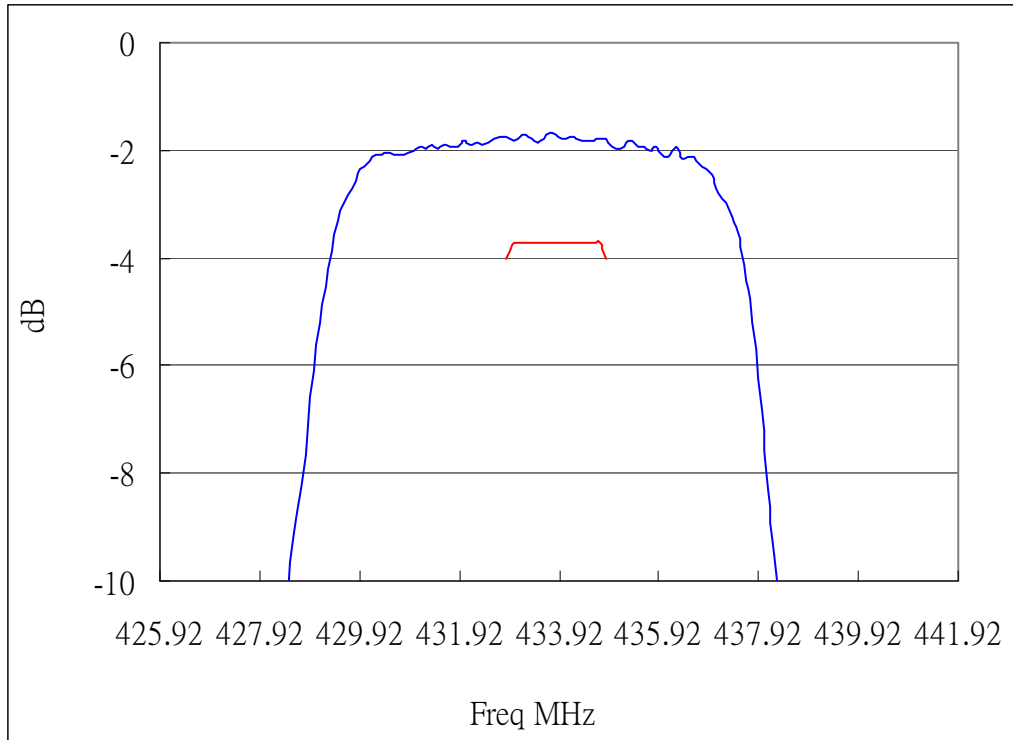
Note: No matching network required for operation at 50Ω.

SAW Filter 433.920MHz
Part No: MP08599

Model: TA0649C
Rev No: 1

C. FREQUENCY CHARACTERISTICS:

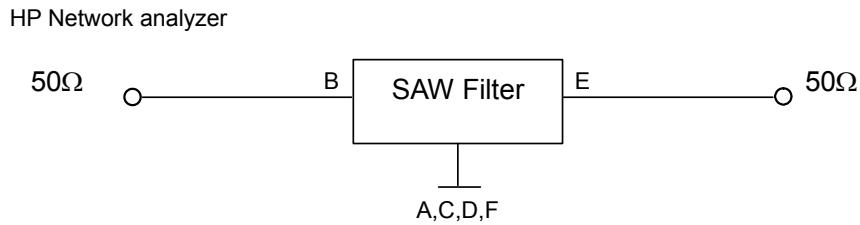
Transfer Function



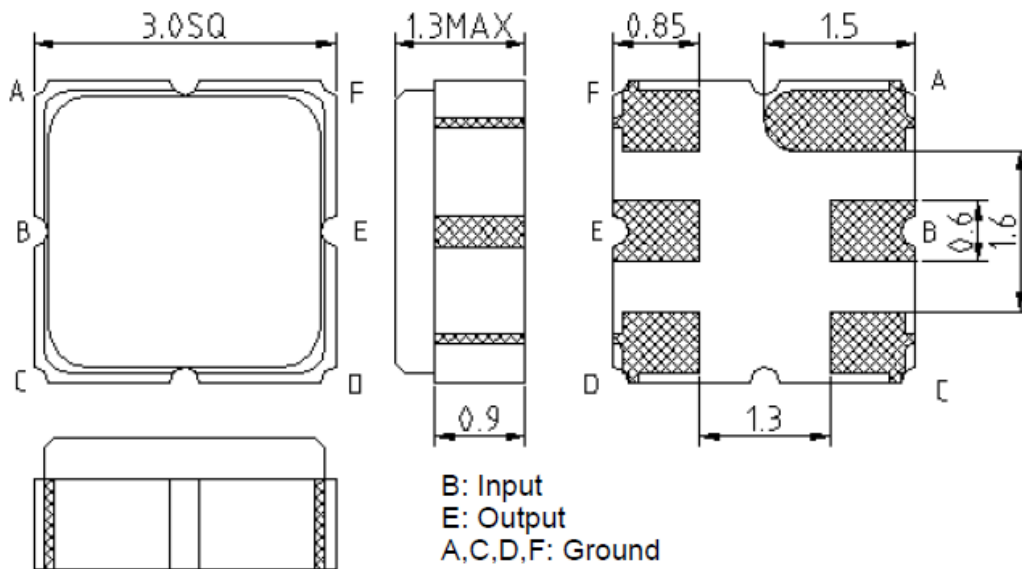
SAW Filter 433.920MHz
Part No: MP08599

Model: TA0649C
Rev No: 1

D. MEASUREMENT CIRCUIT:

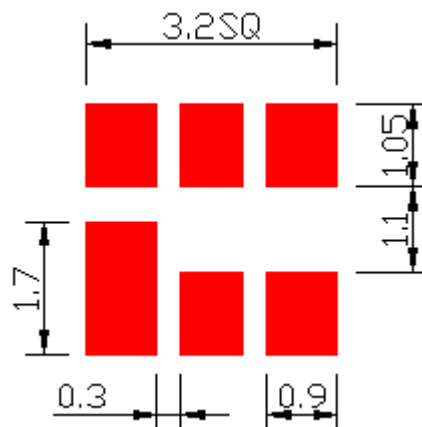


E. OUTLINE DRAWING:



Unit: mm

F. PCB FOOTPRINT:

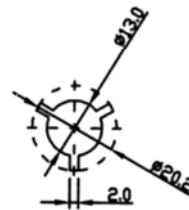
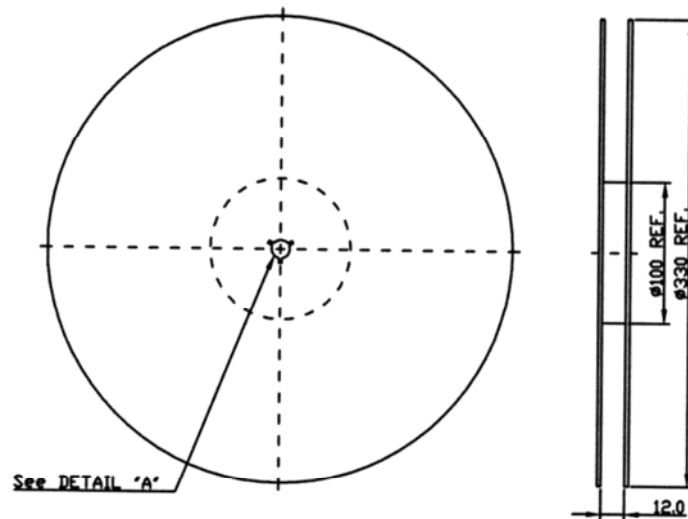


SAW Filter 433.920MHz
Part No: MP08599

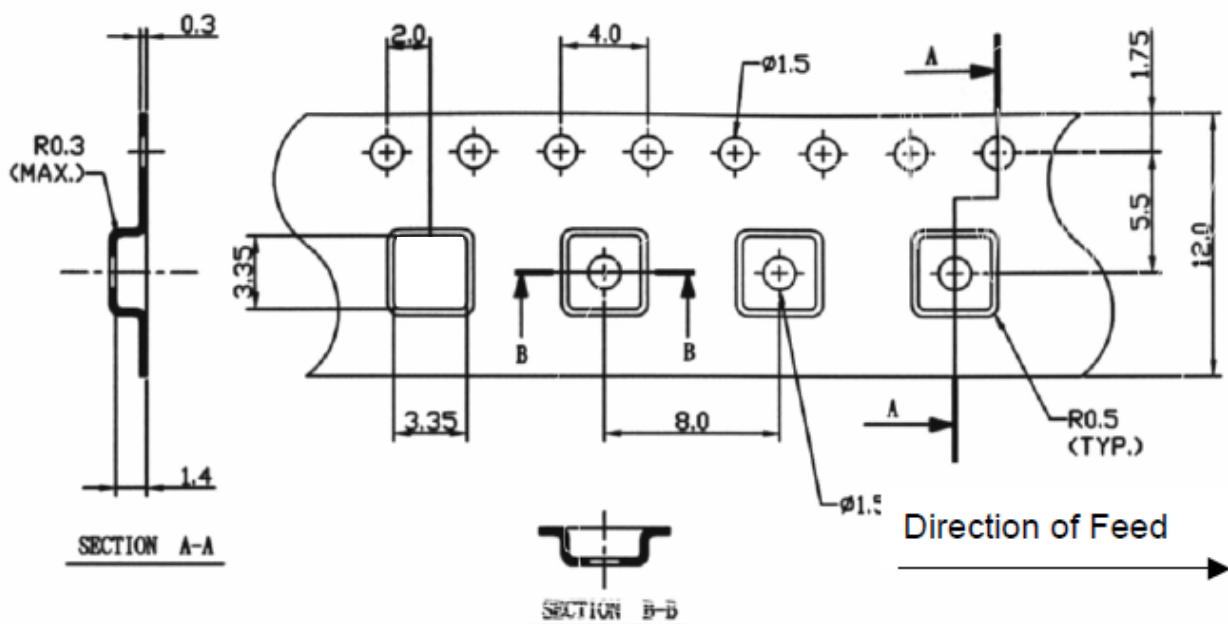
Model: TA0649C
Rev No: 1

G. PACKING:

1. Reel Dimension



2. Tape Dimension



SAW Filter 433.920MHz
Part No: MP08599

Model: TA0649C
Rev No: 1

H. RECOMMENDED REFLOW PROFILE:

