

SAW Filter 1030.0MHz
Part No: MP07577

Model: TA1980A
Rev. No: 2

A. MAXIMUM RATING:

Electrostatic Sensitive Device (ESD)

1. Input Power Level: 15dBm (+20dBm max)
2. DC Voltage: 3V
3. Operating Temperature: -55°C to +85°C
4. Storage Temperature: -55°C to +125°C

B. ELECTRICAL CHARACTERISTICS:

1. Terminating source impedance (single): $Z_S = 50\Omega$
2. Terminating load impedance (single): $Z_L = 50\Omega$

Item	Unit	Min.	Typ.	Max
Center frequency F_c	MHz	-	1030	-
Insertion Loss (1025 ~ 1035MHz) IL	dB	-	3.0	3.6
Amplitude ripple (1025 ~ 1035MHz)	dB	-	0.8	2.5
Maximum absolute group delay (1025 ~ 1035MHz)	ns		65*	80
Group Delay Variation (1025 ~ 1035MHz)	ns	-	16*	80
Attenuation (Reference level from 0dB at MHz)				
500 ~ 946	dB	40	42	-
949 ~ 980	dB	38	42	-
980 ~ 990	dB	40	42	-
1005	dB	30	40	-
1055	dB	30	40	
1080 ~ 1400	dB	40	42	-
1400 ~ 1600	dB	35	41	-
Temperature coefficient of frequency	ppm/°C	-	-36	-

*Measure at 2% smoothing factor

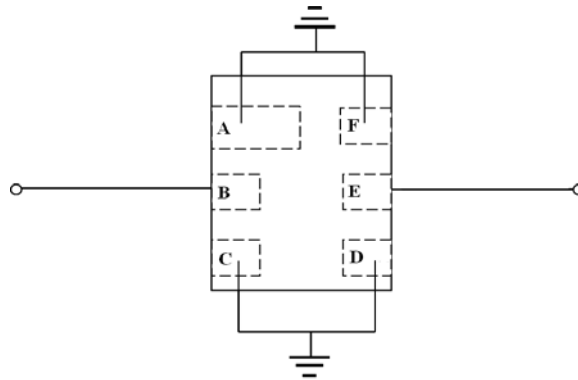
SAW Filter 1030.0MHz

Model: TA1980A

Part No: MP07577

Rev. No: 2

C. TEST CIRCUIT:

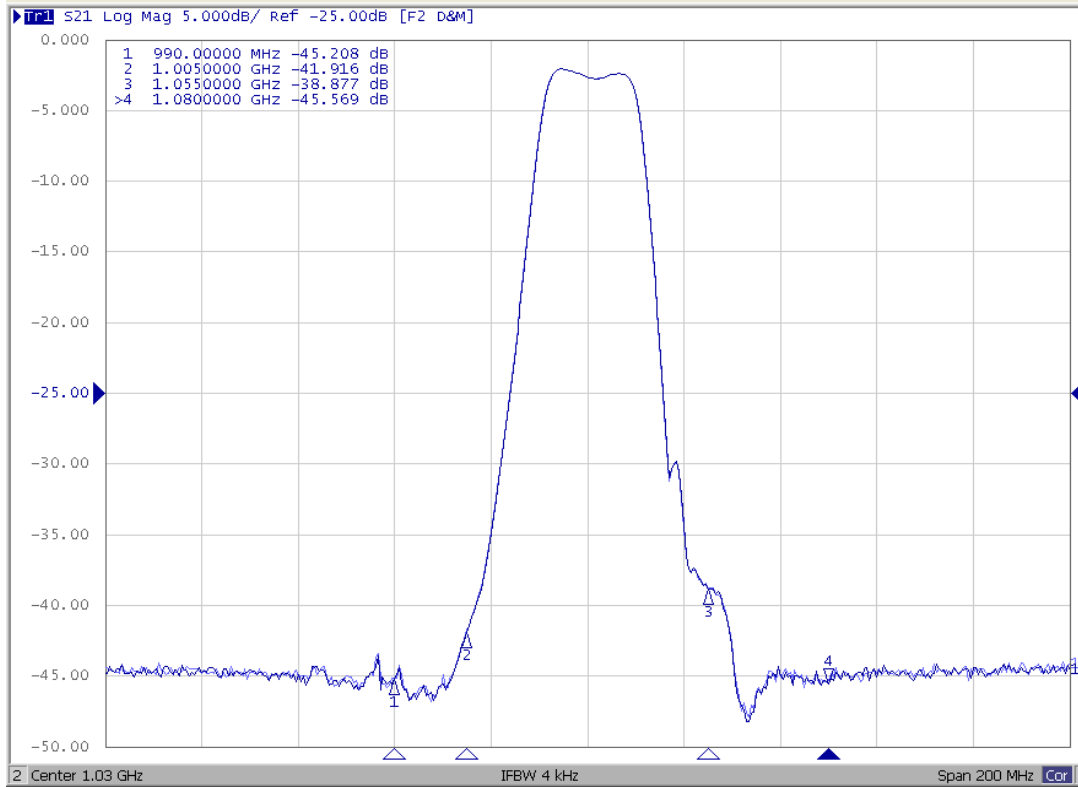


SAW Filter 1030.0MHz
Part No: MP07577

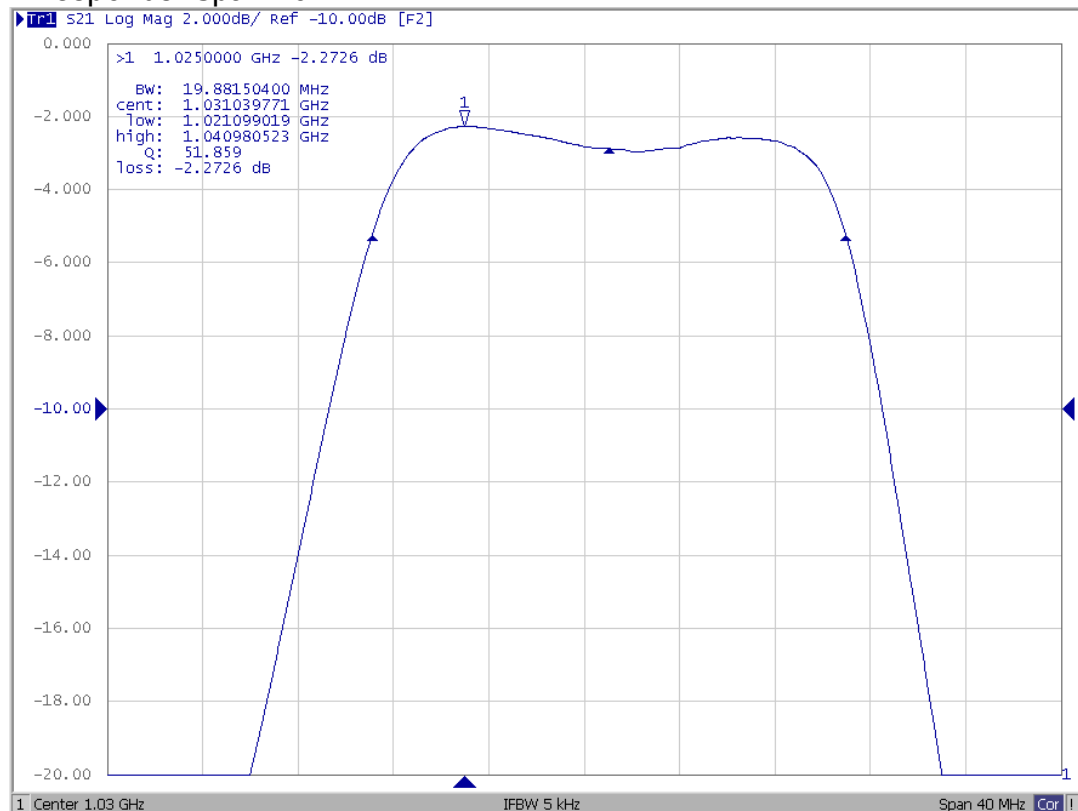
Model: TA1980A
Rev. No: 2

D. FREQUENCY CHARACTERISTICS:

1. S21 response: Center 1030MHz, Span 200MHz



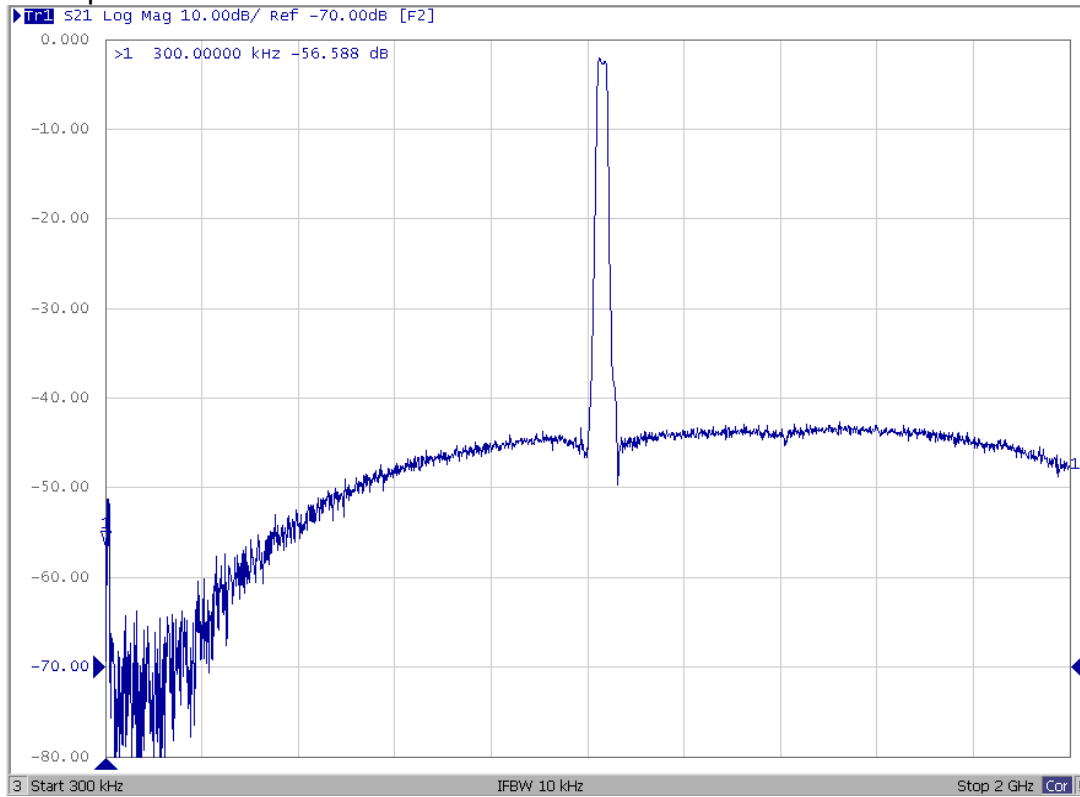
2. S21 response: Span 40MHz



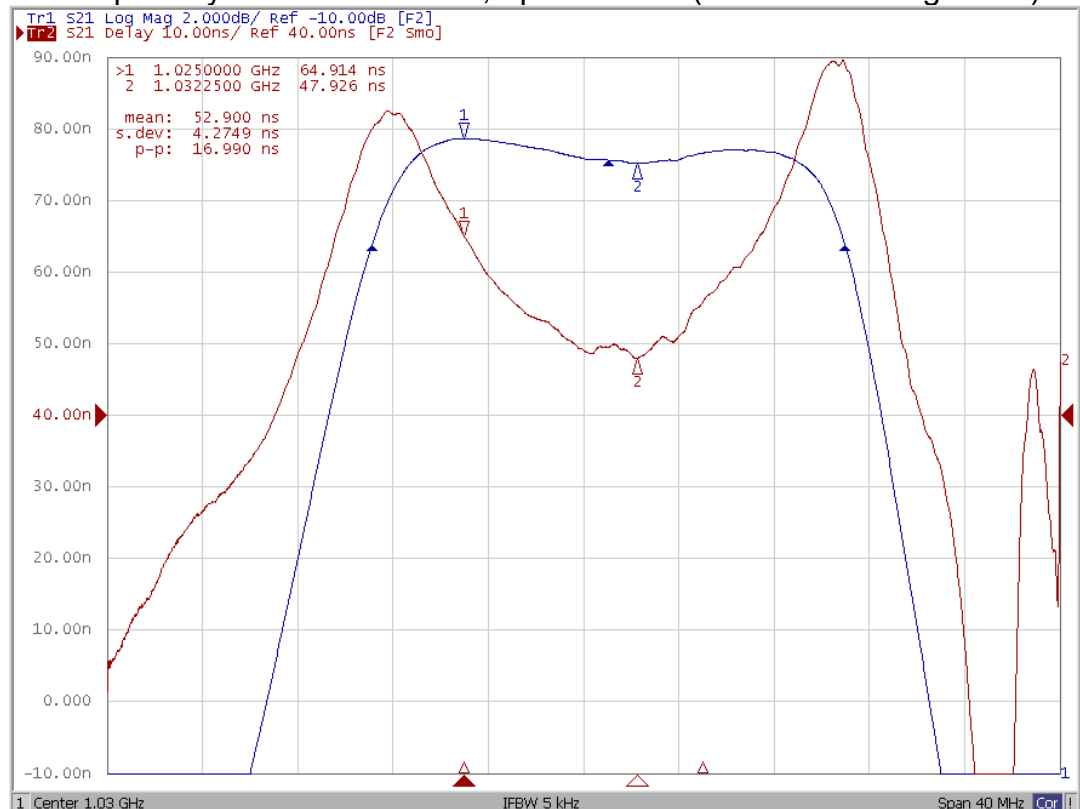
SAW Filter 1030.0MHz
Part No: MP07577

Model: TA1980A
Rev. No: 2

3. S21 response: 0.3MHz ~ 2000MHz



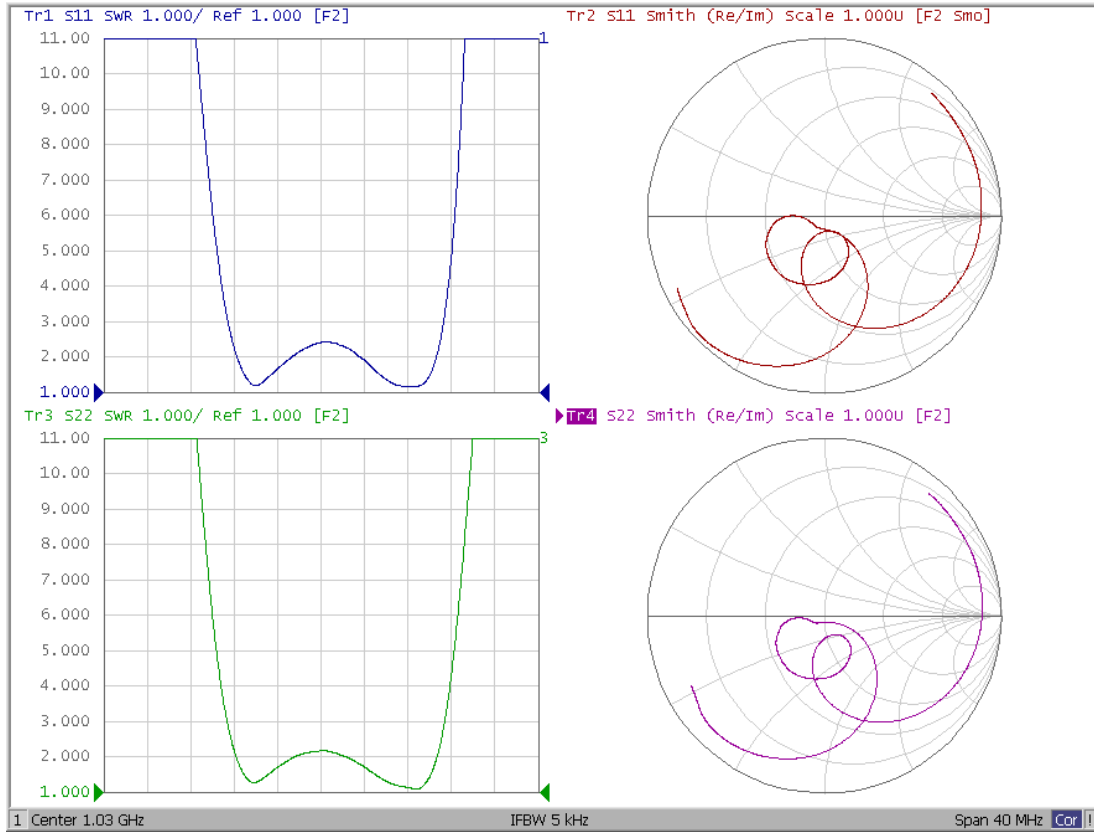
4. S21 Group Delay: Center 1030MHz, Span 40MHz (at 2% smoothing factor)



SAW Filter 1030.0MHz
Part No: MP07577

Model: TA1980A
Rev. No: 2

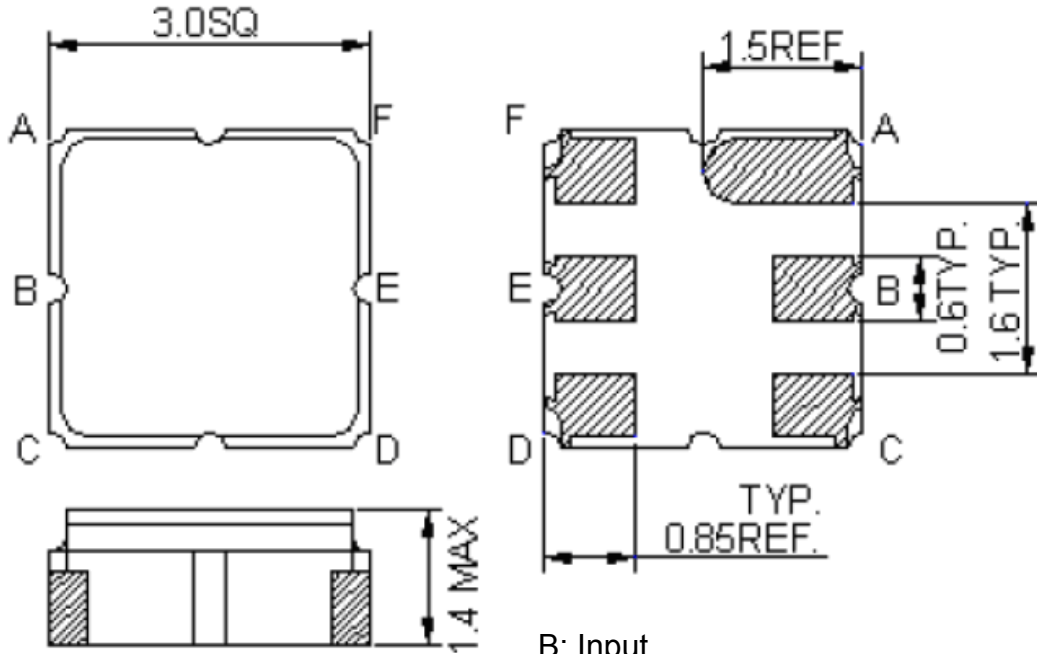
5. Reflection function



SAW Filter 1030.0MHz
Part No: MP07577

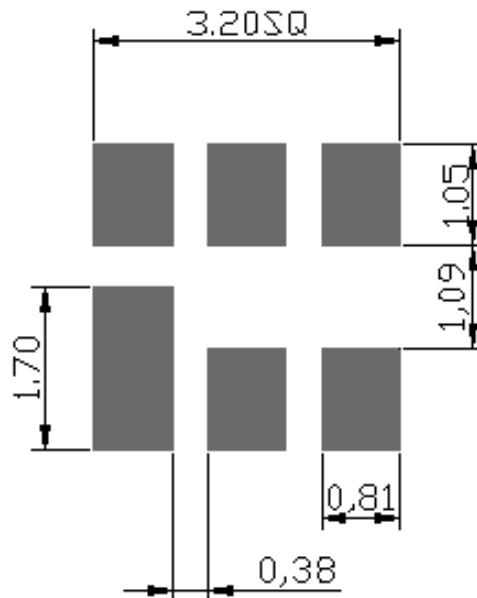
Model: TA1980A
Rev. No: 2

E. OUTLINE DRAWING:



B: Input
 E: Output
 A, C, D, F: Ground
 Unit: mm

F. PCB FOOTPRINT:



SAW Filter 1030.0MHz

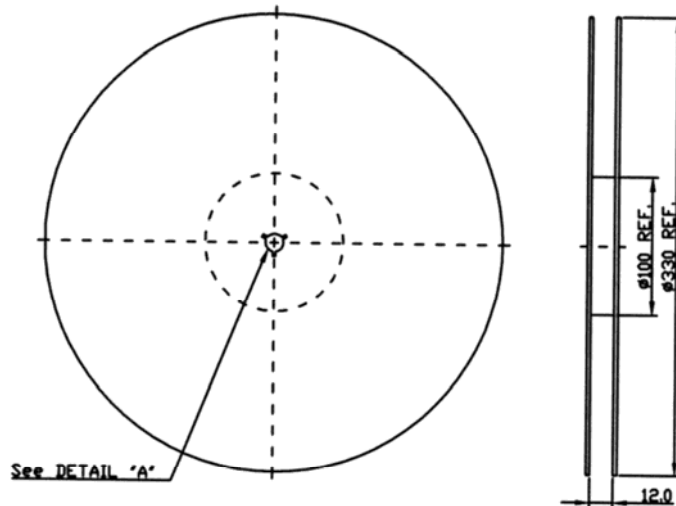
Model: TA1980A

Part No: MP07577

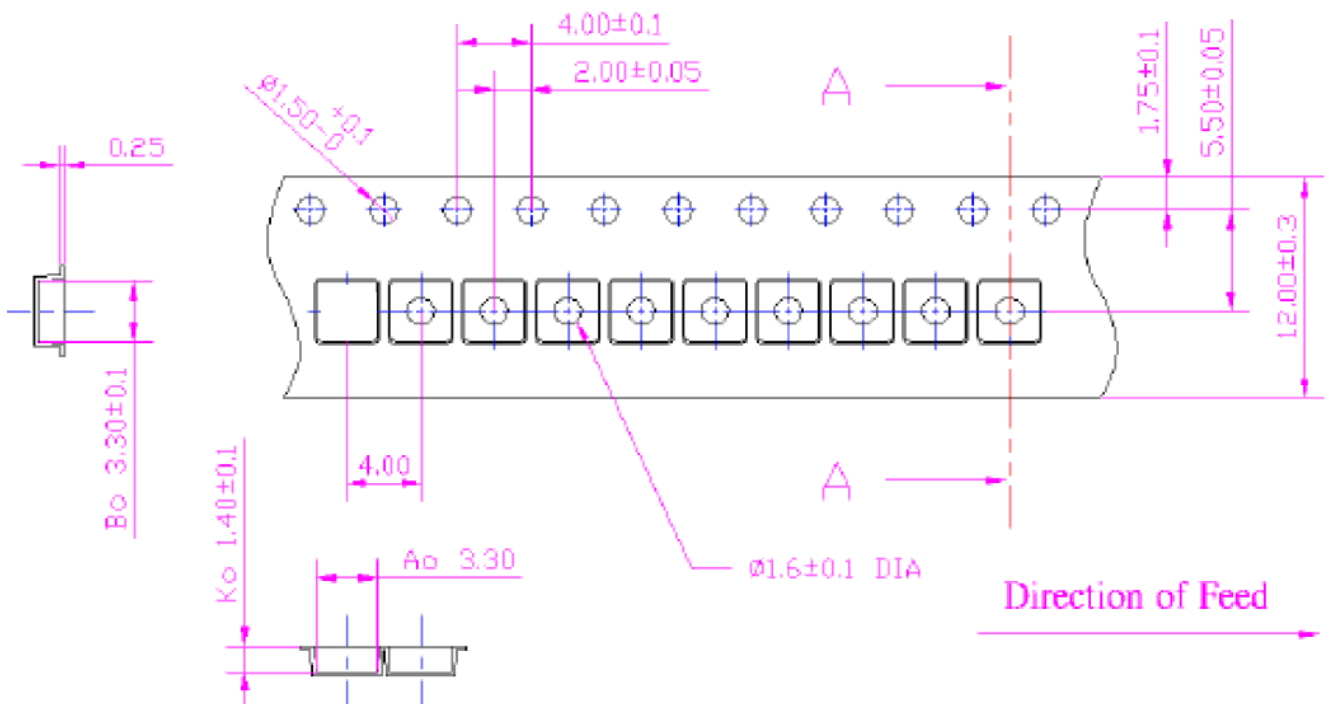
Rev. No: 2

G. PACKING:

1. Reel Dimension



2. Tape Dimension



SAW Filter 1030.0MHz
Part No: MP07577

Model: TA1980A
Rev. No: 2

H. RECOMMENDED REFLOW PROFILE:

1. Preheating shall be fixed at 150 ~ 180°C for 60 ~ 90 seconds.
2. Ascending time to preheating temperature 150°C shall be 30 seconds min.
3. Heating shall be fixed at 220°C for 50 ~ 80 seconds and at 260°C +0/-5°C peak (20 ~ 40 sec).
4. Time: 2 times.

