

SAW Filter 996.340MHz
Part No: MP08000 (AEC-Q200 compliant)

Model: TA0820B
Rev No: 1

A. MAXIMUM RATING:

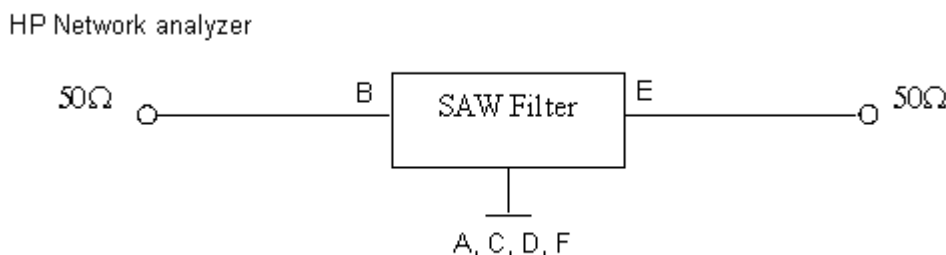
Electrostatic Sensitive Device (ESD)

1. Input Power Level: 10dBm
2. DC Voltage: 5V
3. Operating Temperature: -40°C to +85°C
4. Storage Temperature: -40°C to +125°C

B. ELECTRICAL CHARACTERISTICS:

Item	Unit	Min.	Typ.	Max.
Center frequency Fc	MHz	-	996.34	-
Insertion loss at Fc IL	dB	-	1.9	-
1dB bandwidth	MHz	30	38	-
3dB bandwidth	MHz	-	48	-
Insertion loss (981.34 ~ 1011.34MHz)	dB	-	2.6	4.8
Ripple (981.34 ~ 1011.34MHz)	dB	-	0.85	1.6
VSWR (981.34 ~ 1011.34MHz)		-	1.6	2.5
Group Delay ripple (981.34 ~ 1011.34MHz)	nsec		15	80
Attenuation (Reference level from Fc IL)				
10 ~ 956MHz	dB	40	50	-
1046 ~ 1097MHz	dB	28	35	-
1097 ~ 1146MHz	dB	40	60	-

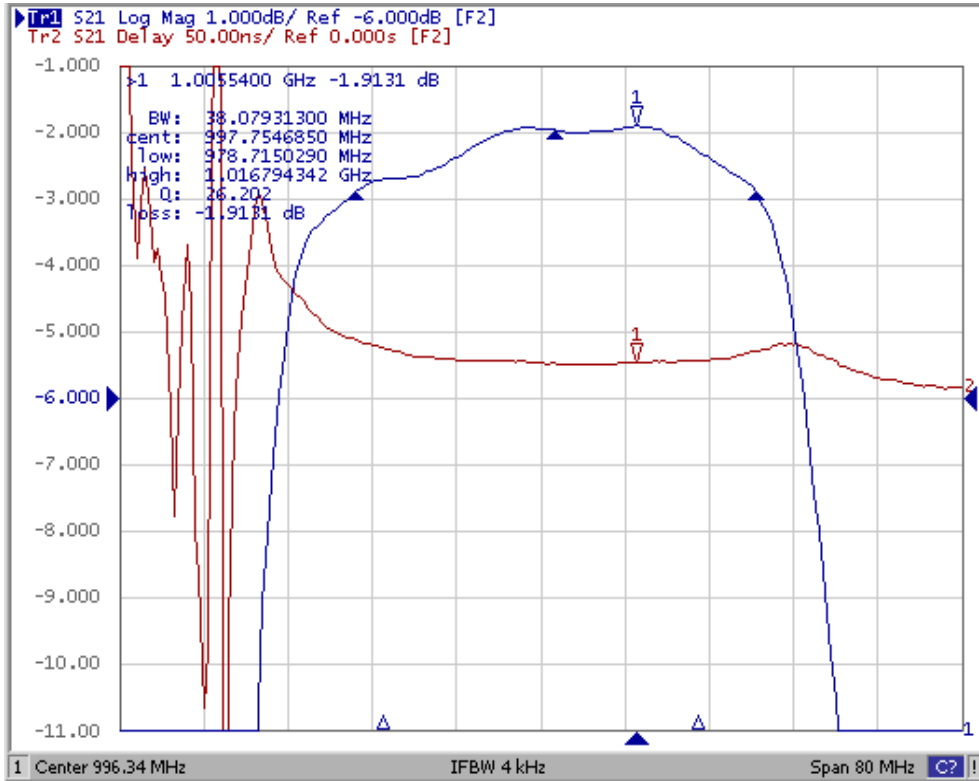
C. MEASUREMENT CIRCUIT:



SAW Filter 996.340MHz
Part No: MP08000 (AEC-Q200 compliant)

Model: TA0820B
Rev No: 1

D. FREQUENCY CHARACTERISTIC:

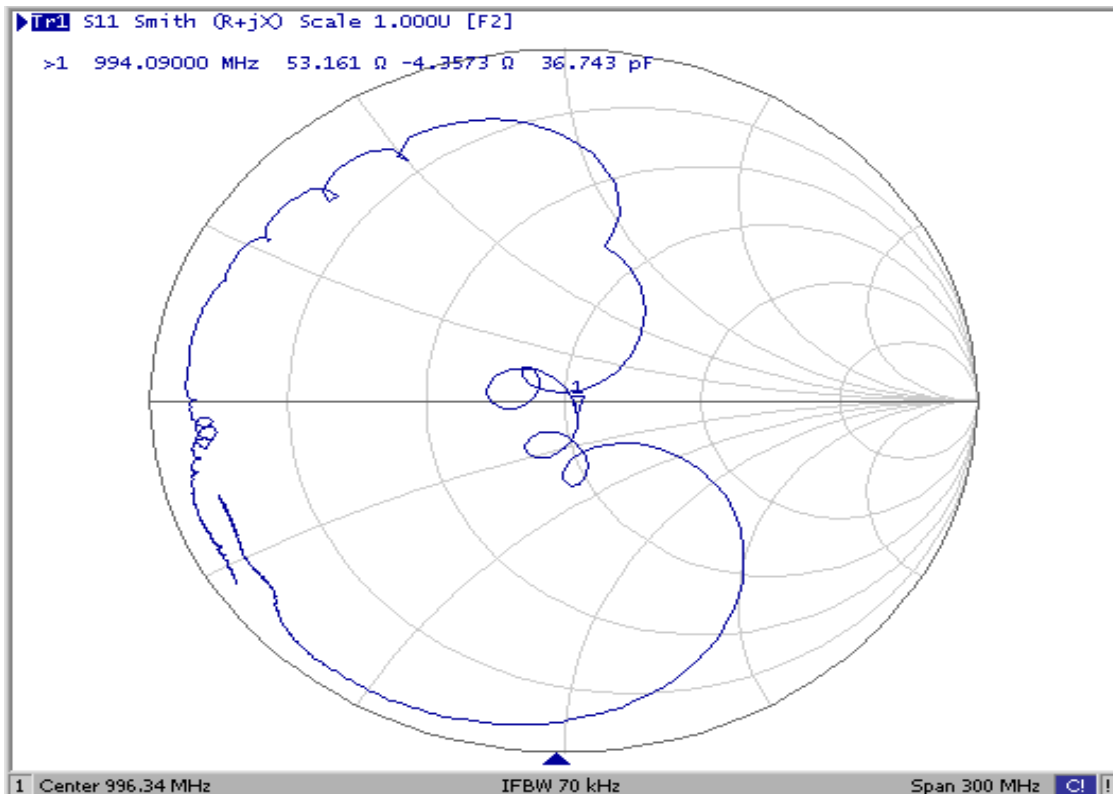
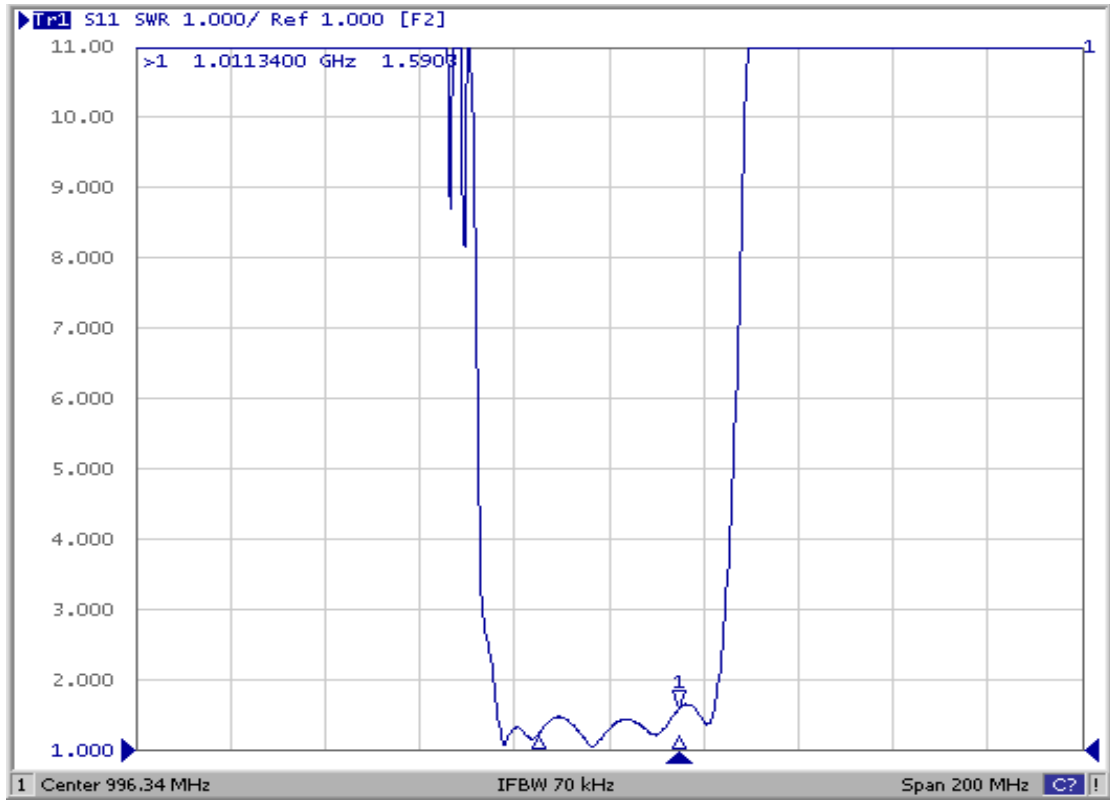


SAW Filter 996.340MHz
Part No: MP08000 (AEC-Q200 compliant)

Model: TA0820B
Rev No: 1

Reflection Functions:

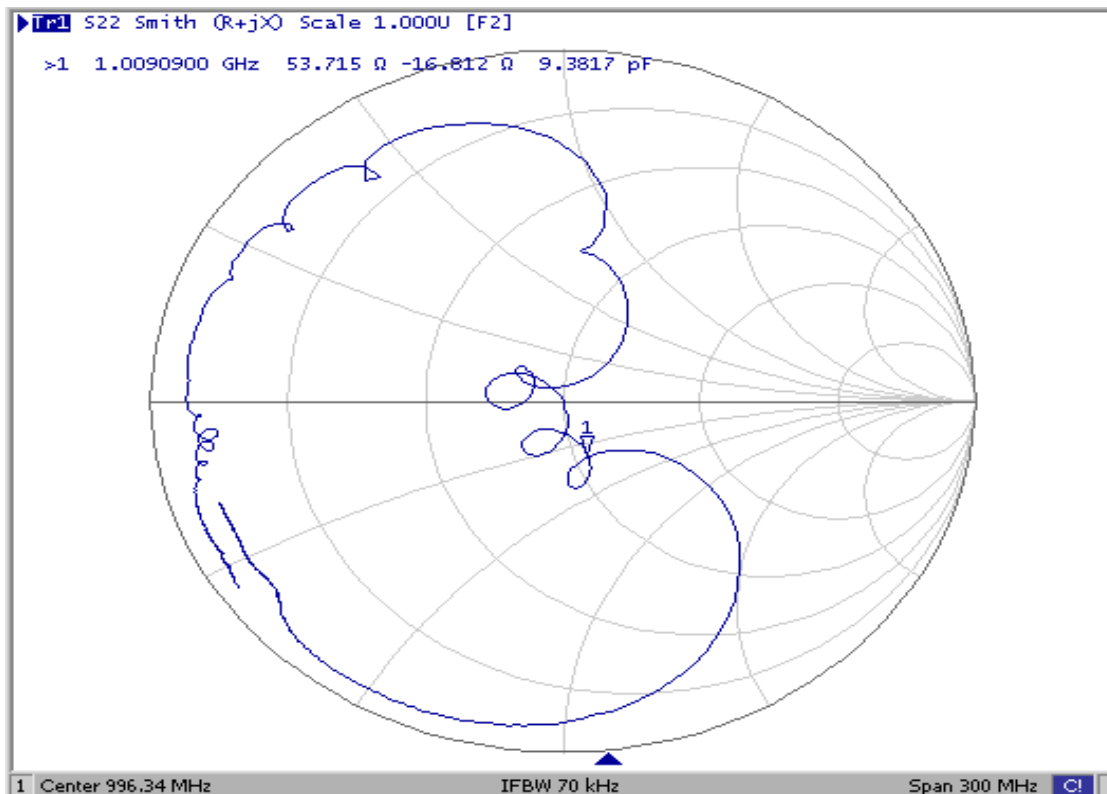
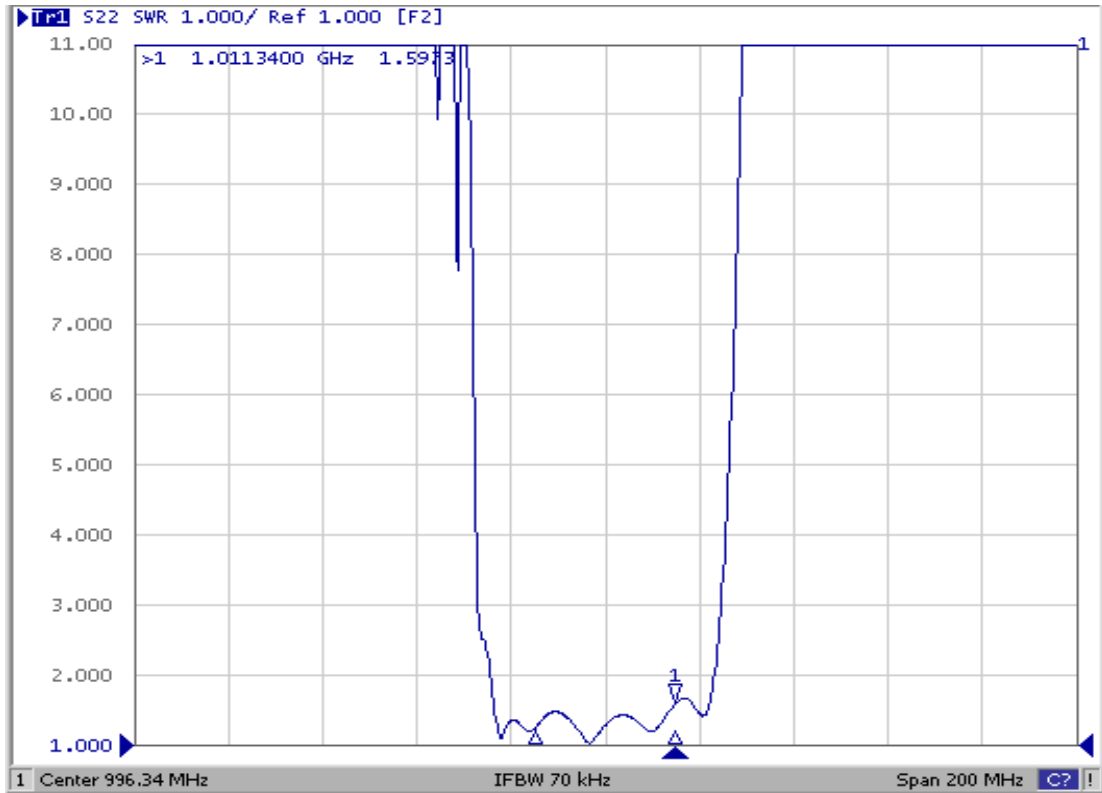
S11



SAW Filter 996.340MHz
Part No: MP08000 (AEC-Q200 compliant)

Model: TA0820B
Rev No: 1

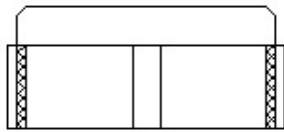
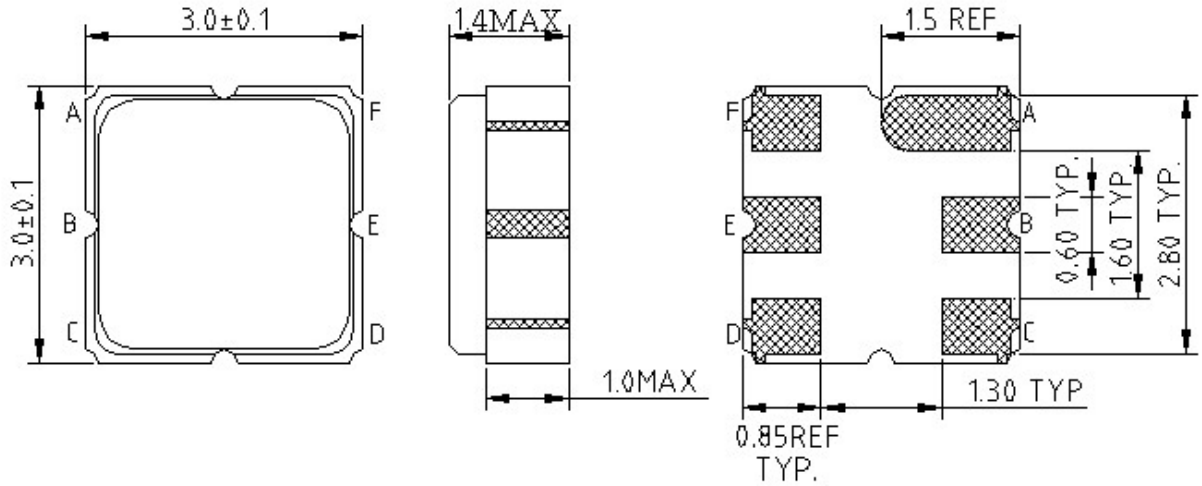
S22



SAW Filter 996.340MHz
Part No: MP08000 (AEC-Q200 compliant)

Model: TA0820B
Rev No: 1

E. OUTLINE DRAWING:



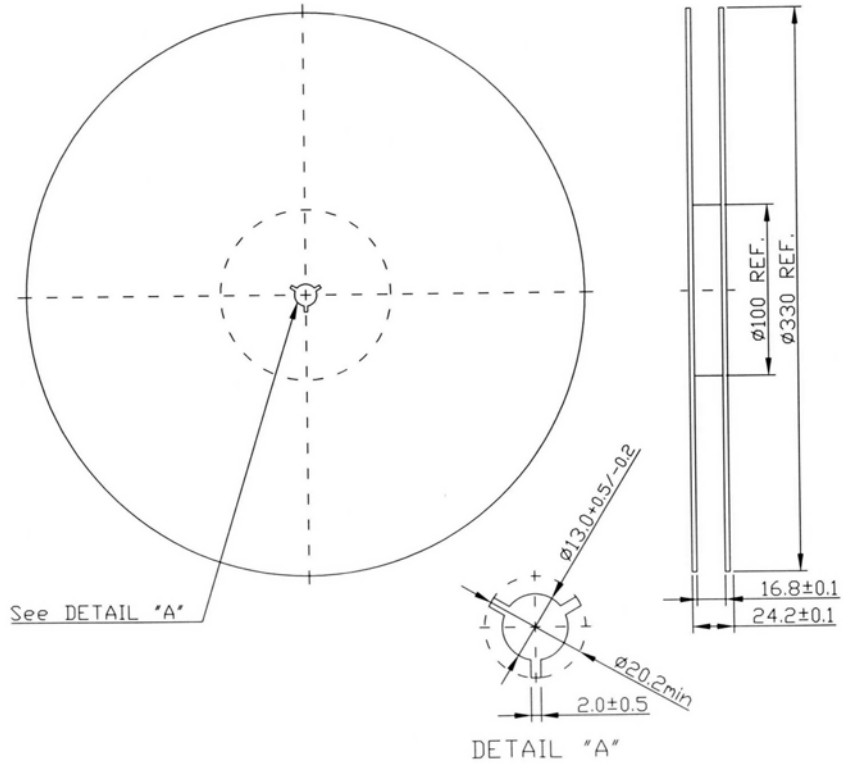
B: Input
E: Output
A, C, D, F: Ground
Unit: mm

SAW Filter 996.340MHz
Part No: MP08000 (AEC-Q200 compliant)

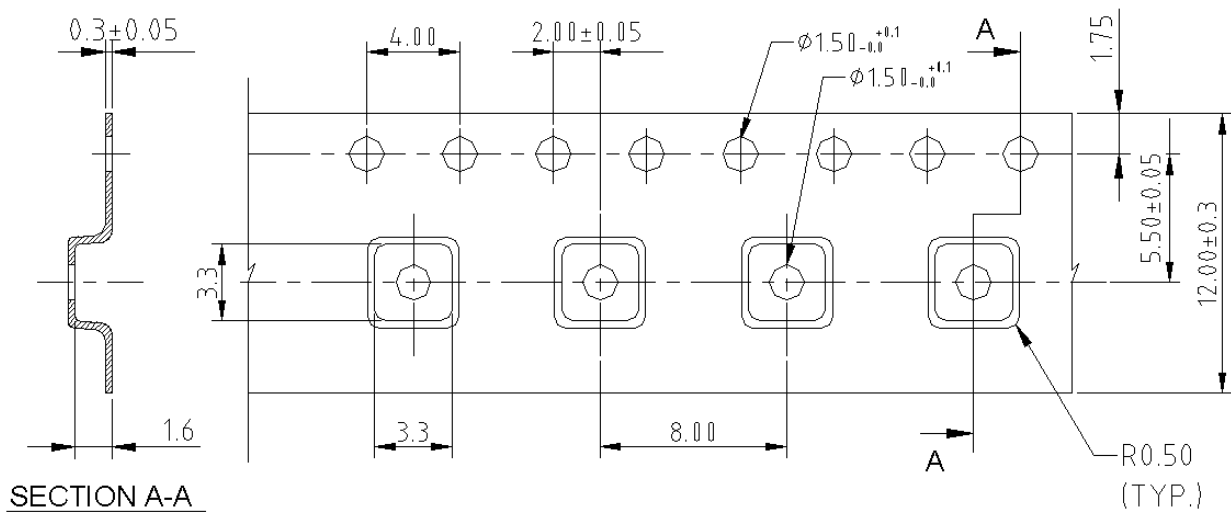
Model: TA0820B
Rev No: 1

F. PACKING:

1. Reel Dimension (Please refer to FR-75D10 for packing quantity)



2. Tape Dimension



SAW Filter 996.340MHz
Part No: MP08000 (AEC-Q200 compliant)

Model: TA0820B
Rev No: 1

G. RECOMMENDED REFLOW PROFILE:

1. Preheating shall be fixed at 150 ~ 180°C for 60 ~ 90 seconds.
2. Ascending time to preheating temperature 150°C shall be 30 seconds min.
3. Heating shall be fixed at 220°C for 50 ~ 80 seconds and at 260°C +0/-5°C peak (20 ~ 40 sec).
4. Time: 2 times.

