

**SAW Filter 485.0MHz**  
**Part No: MP07981**

**Model: TA2008A**  
**Rev No: 1**

**A. MAXIMUM RATING:**

**Electrostatic Sensitive Device (ESD)**

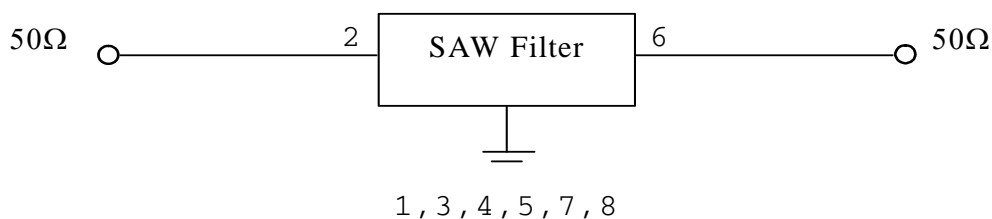
1. Input Power Level: 10dBm
2. DC voltage: 3V
3. Operating Temperature: -40°C to +85°C
4. Storage Temperature: -40°C to +85°C

**B. ELECTRICAL CHARACTERISTICS:**

Item	Unit	Min.	Typ.	Max.
Center frequency Fc	MHz	-	485	-
Insertion Loss (480 ~ 490MHz) IL	dB	-	2.6	4.0
Amplitude Ripple (480 ~ 490MHz)	dB	-	0.6	2.0
Attenuation (Reference level from 0dB)				
385 ~ 445MHz	dB	47	63	-
525 ~ 585MHz	dB	36	54	-
Impedance at Fc				
Input $Z_{IN} = R_{IN} // C_{IN}$	$\Omega$	50 $\Omega$ //0pF		
Output $Z_{OUT} = R_{OUT} // C_{OUT}$	$\Omega$	50 $\Omega$ //0pF		

**C. MEASUREMENT CIRCUIT:**

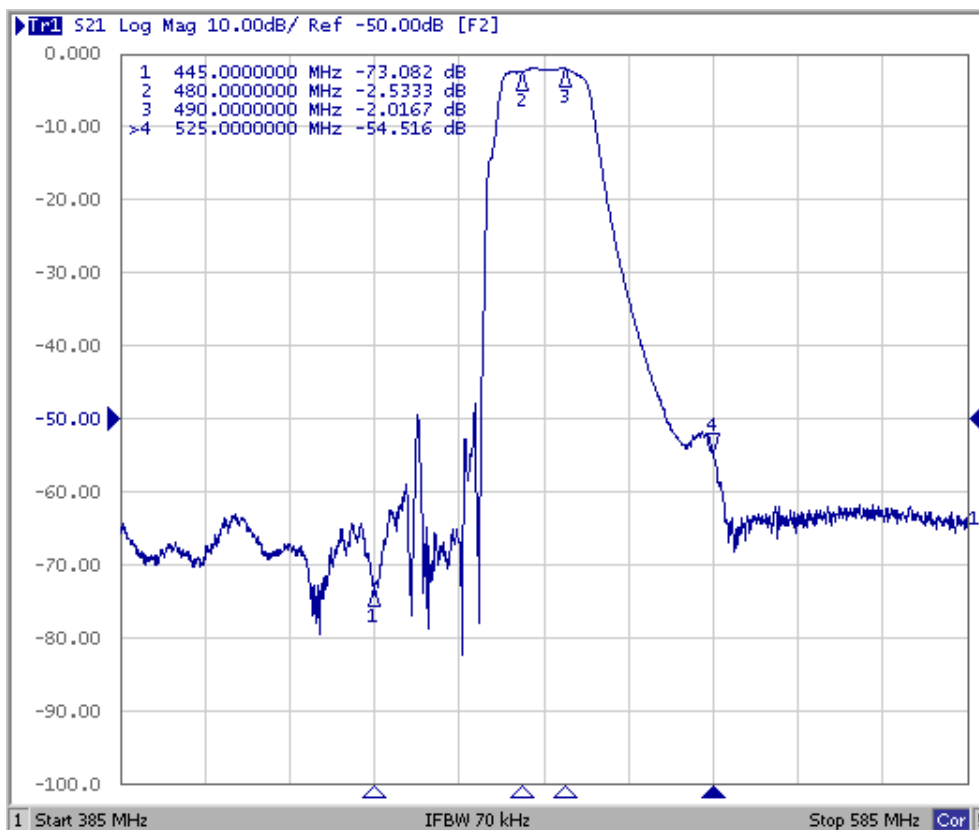
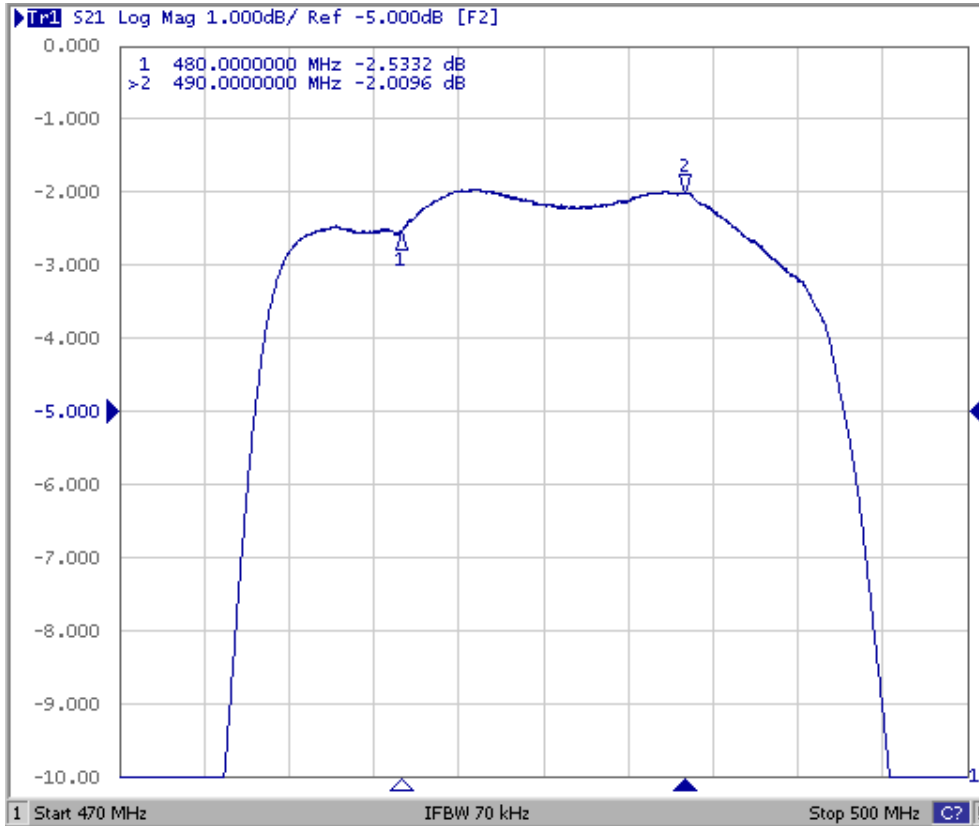
HP Network analyzer



**SAW Filter 485.0MHz**  
**Part No: MP07981**

**Model: TA2008A**  
**Rev No: 1**

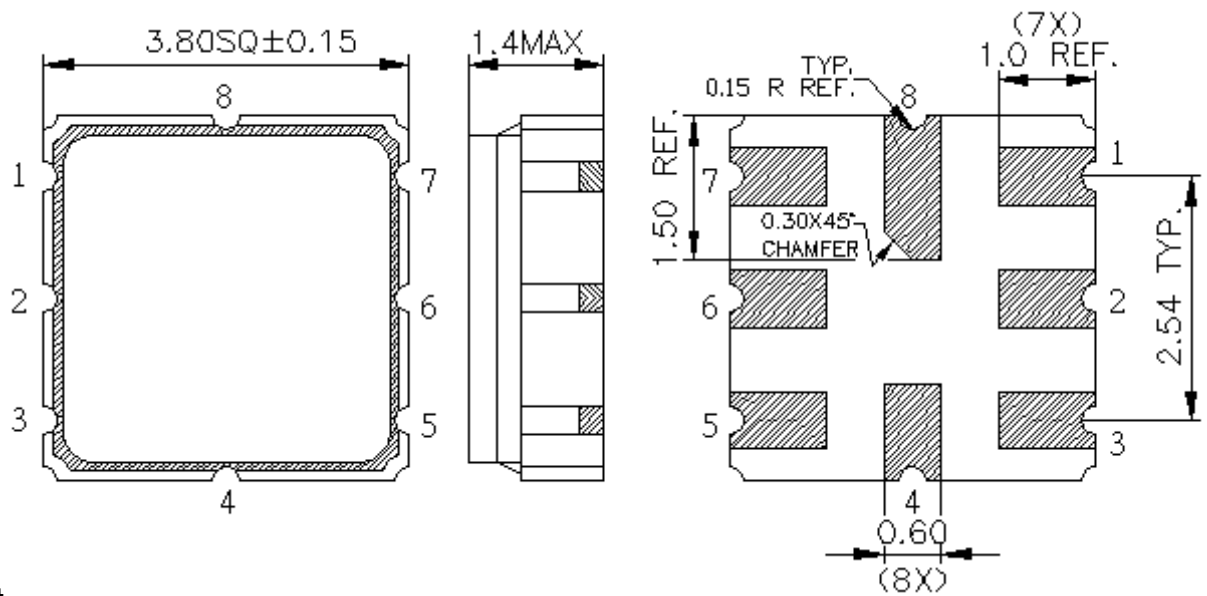
**D. FREQUENCY CHARACTERISTICS:**



**SAW Filter 485.0MHz**  
**Part No: MP07981**

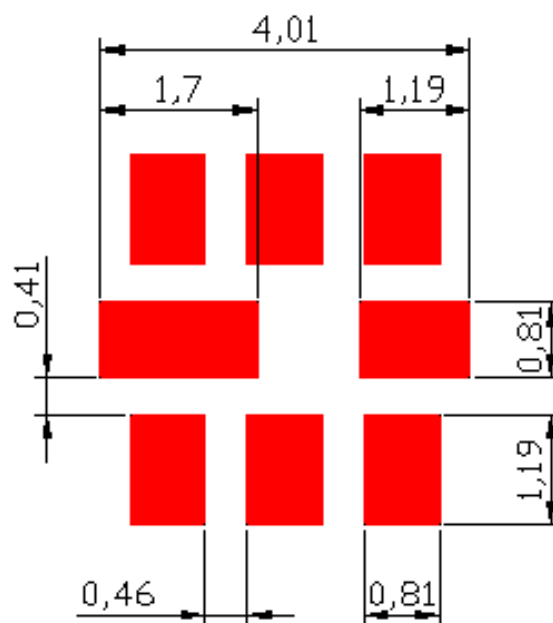
**Model: TA2008A**  
**Rev No: 1**

**E. OUTLINE DRAWING:**



2: Input  
 6: Output  
 1, 3, 4, 5, 7, 8: Ground  
 Unit: mm

**F. PCB FOOTPRINT:**

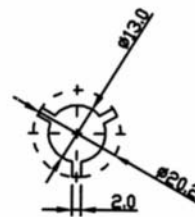
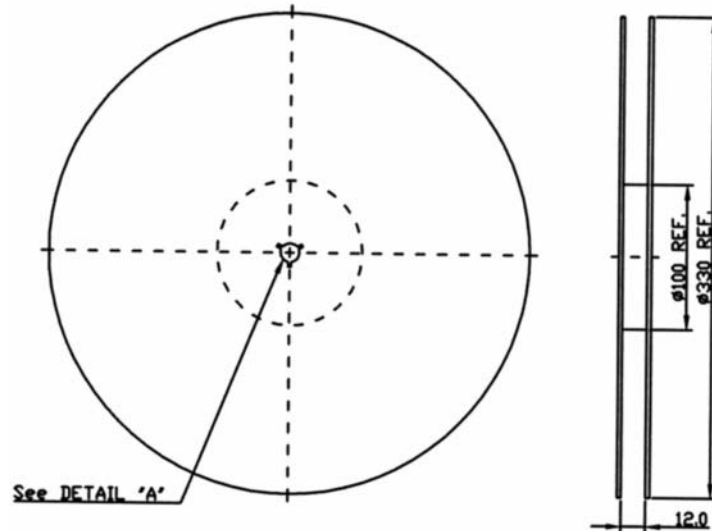


**SAW Filter 485.0MHz**  
**Part No: MP07981**

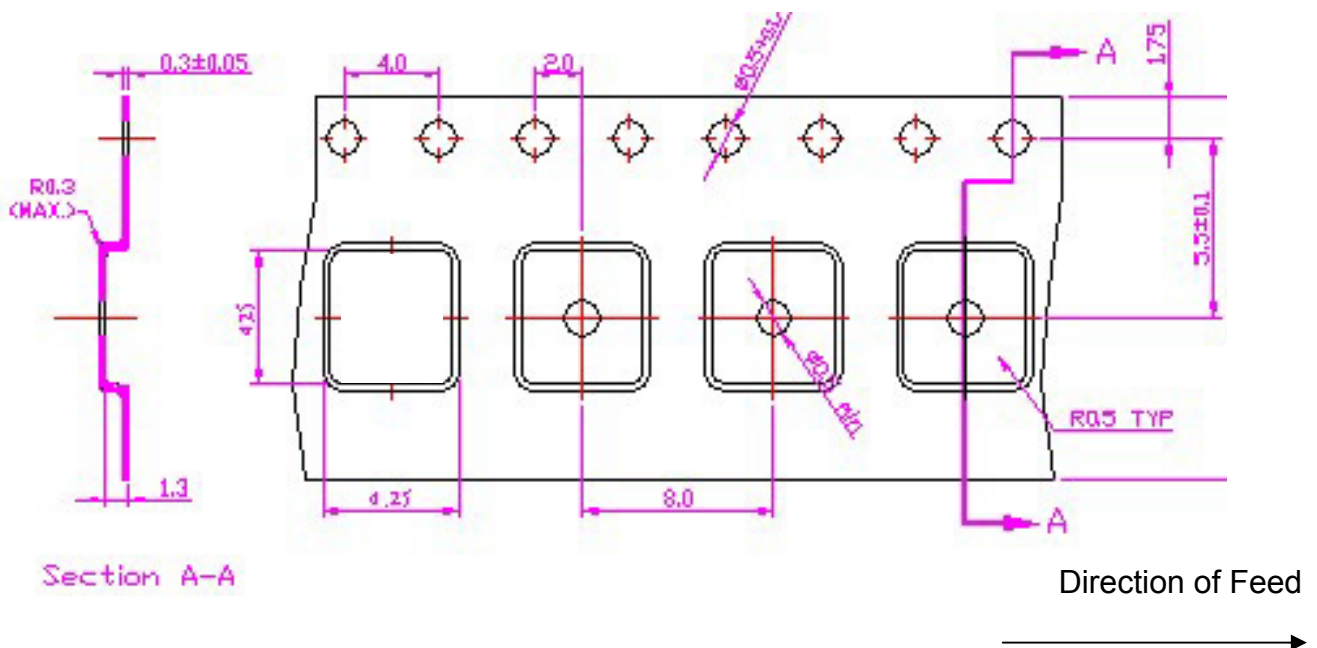
**Model: TA2008A**  
**Rev No: 1**

**G. PACKING:**

1. Reel Dimension (Please refer to FR-75D10 for packing quantity)



2. Tape Dimension



**SAW Filter 485.0MHz**  
**Part No: MP07981**

**Model: TA2008A**  
**Rev No: 1**

**H. RECOMMENDED REFLOW PROFILE:**

1. Preheating shall be fixed at 150 ~ 180°C for 60 ~ 90 seconds.
2. Ascending time to preheating temperature 150°C shall be 30 seconds min.
3. Heating shall be fixed at 220°C for 50 ~ 80 seconds and at 245 ~ 260°C peak (min. 10 sec).
4. Time: 2 times.

