

SAW Filter 914.5MHz
Part No: MP02742

Model: TA1163A
Rev No: 1

A. MAXIMUM RATING:

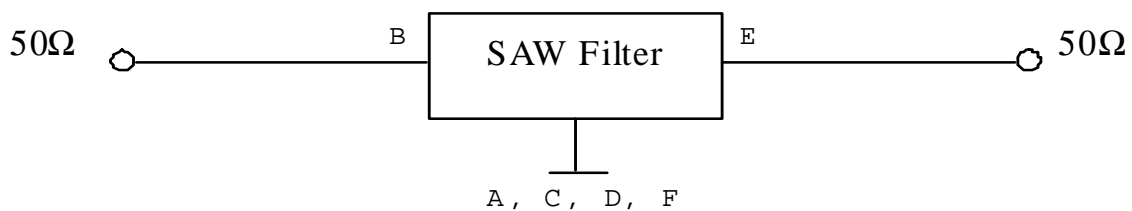
1. Input Power Level: 10dBm
2. DC voltage: 3V
3. Operating Temperature: -20°C to +70°C
4. Storage Temperature: -30°C to +85°C

B. ELECTRICAL CHARACTERISTICS:

Item	Unit	Min.	Typ.	Max.
Center frequency Fc	MHz	-	914.5	-
Insertion Loss (907 ~ 922MHz) IL	dB	-	1.7	3.0
Amplitude Ripple (907 ~ 922MHz)	dB	-	0.8	1.5
Input/Output VSWR (907 ~ 922MHz)	-	-	1.6	2.2
Attenuation (Reference level from 0dB)				
0.3 ~ 890MHz	dB	9	20	-
933 ~ 940MHz	dB	30	46	-
940 ~ 960MHz	dB	35	45	-
960 ~ 1500MHz	dB	35	38	-

C. MEASUREMENT CIRCUIT:

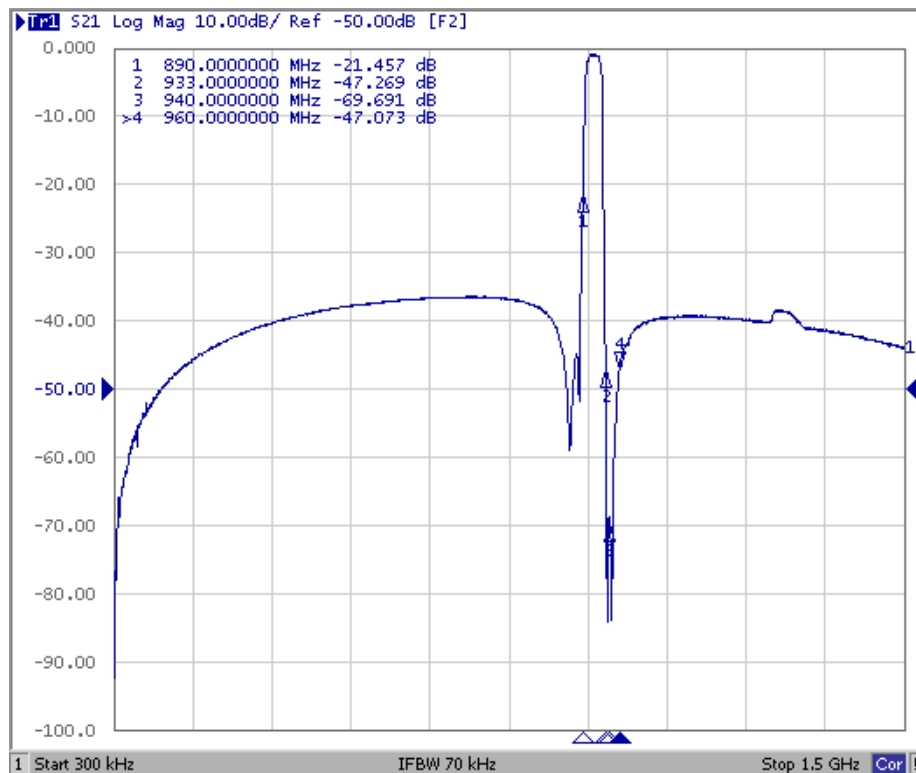
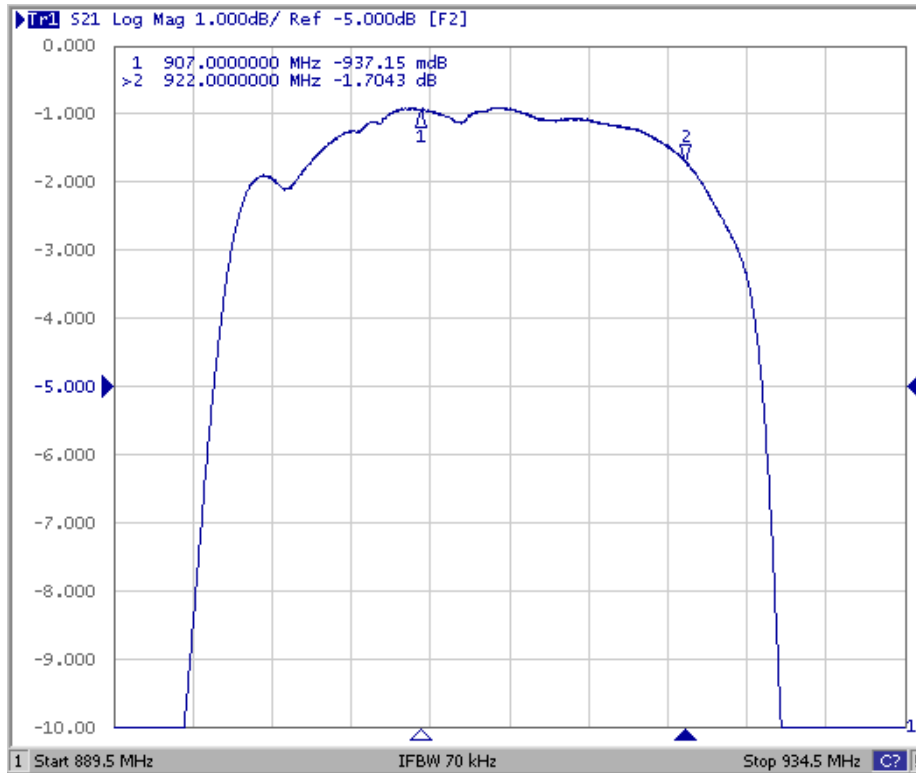
HP Network analyzer



SAW Filter 914.5MHz
Part No: MP02742

Model: TA1163A
Rev No: 1

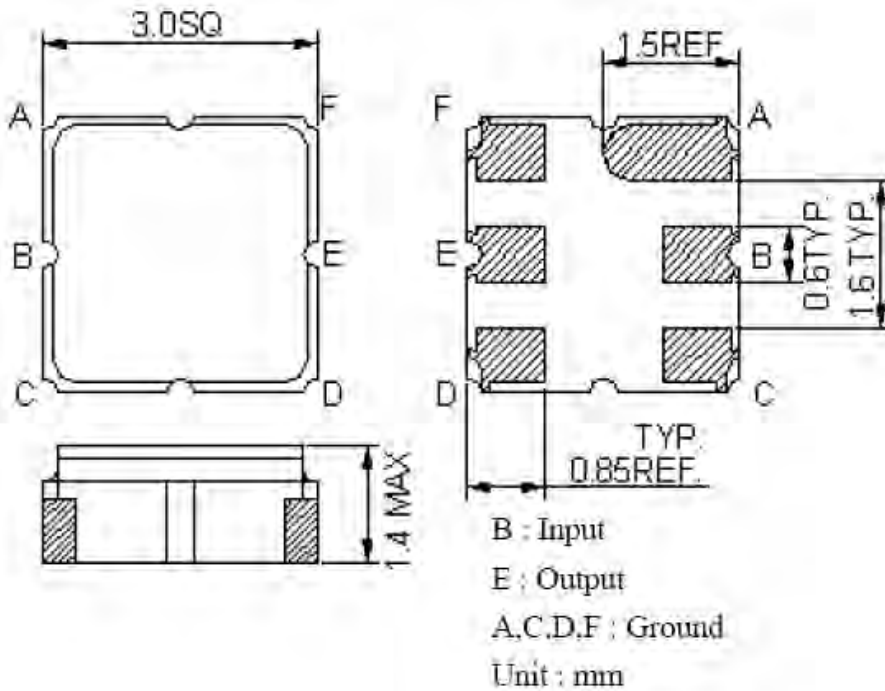
D. FREQUENCY CHARACTERISTICS:



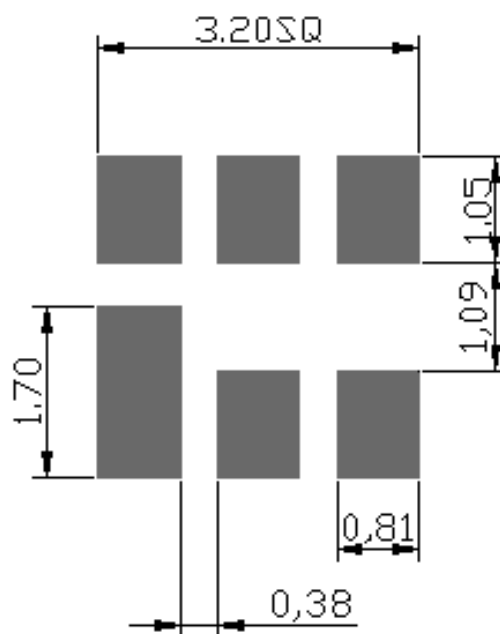
SAW Filter 914.5MHz
Part No: MP02742

Model: TA1163A
Rev No: 1

E. OUTLINE DRAWING:



F. PCB FOOTPRINT:

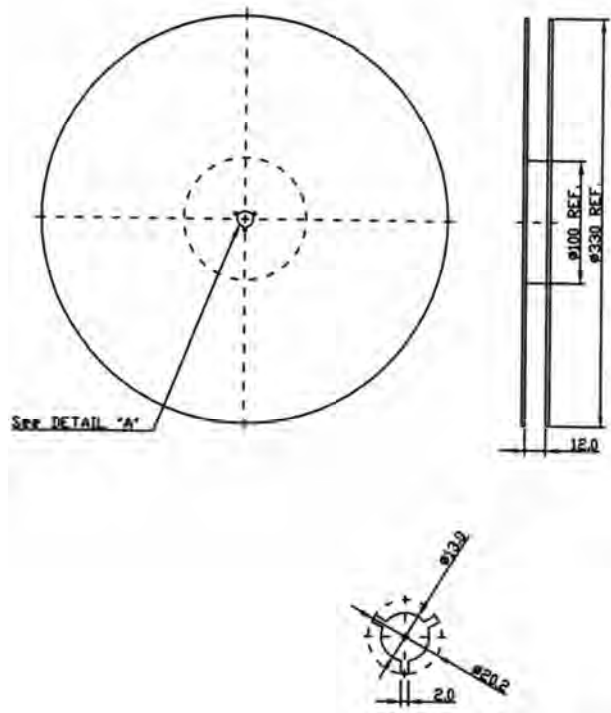


SAW Filter 914.5MHz
Part No: MP02742

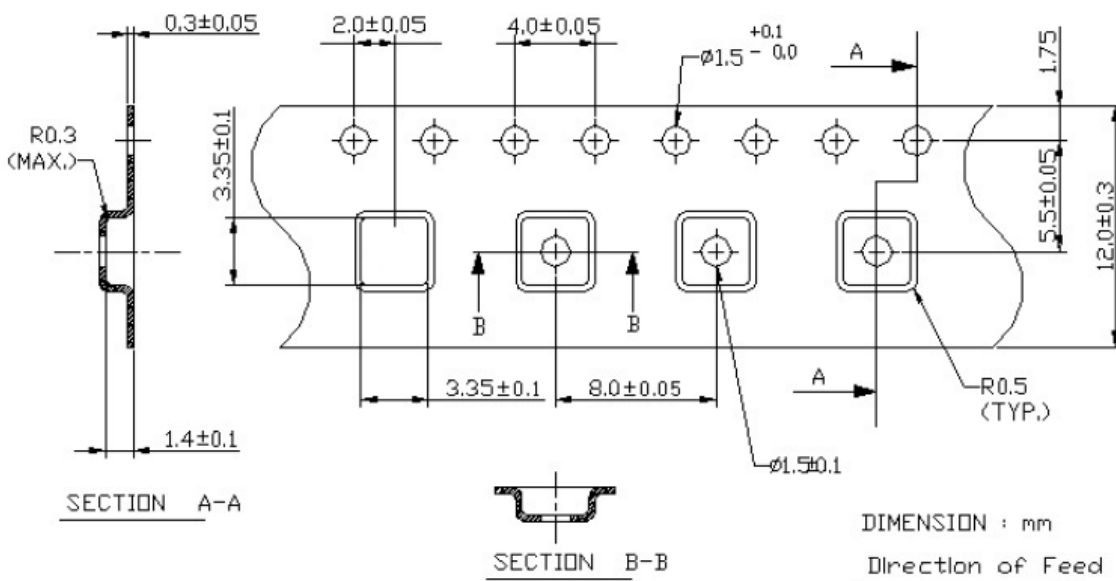
Model: TA1163A
Rev No: 1

G. PACKING:

1. REEL DIMENSION



2. TAPE DIMENSION



SAW Filter 914.5MHz
Part No: MP02742

Model: TA1163A
Rev No: 1

H. RECOMMENDED REFLOW PROFILE:

