

**SAW Filter 1227.0MHz**  
**Part No: MP03775**

**Model: TA1033A**  
**Rev No: 1**

**A. MAXIMUM RATING:**

1. Input Power Level: 10dBm
2. DC Voltage: 3V
3. Operating Temperature: -40°C to +85°C
4. Storage Temperature: -50°C to +95°C

**B. ELECTRICAL CHARACTERISTICS:**

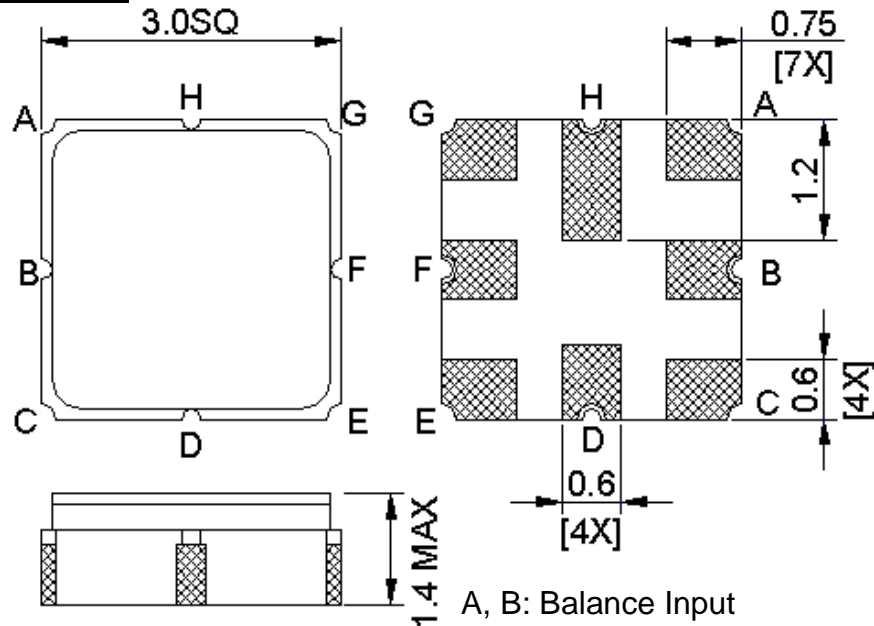
1. Terminating source impedance (differential):  $Z_S = 200\Omega // 30nH$
2. Terminating load impedance (differential):  $Z_L = 200\Omega // 30nH$

Item	Unit	Min.	Typ.	Max.	Note
Center Frequency Fc	MHz	-	1227	-	-
Bandwidth at -3dB	MHz	-	46	-	-
Insertion Loss in 1217 ~ 1237MHz	dB	-	2.6	4	-
Amplitude ripple (1217MHz ~ 1237MHz)	dB	-	0.6	2	-
Group delay variation (1217 MHz ~ 1237MHz)	ns	-	10	15	-
I/O Return Loss (1217MHz ~ 1237MHz)	dB	8	9.5	-	-
Attenuation (reference level from 0dB)					
10 ~ 930MHz	dB	44	50	-	-
1380 ~ 2000MHz	dB	44	52	-	-
2000 ~ 2400MHz	dB	38	50	-	-

**SAW Filter 1227.0MHz**  
**Part No: MP03775**

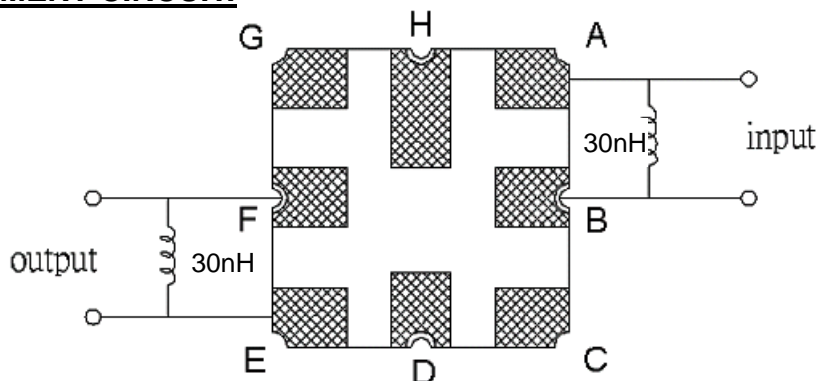
**Model: TA1033A**  
**Rev No: 1**

**C. OUTLINE DRAWING:**

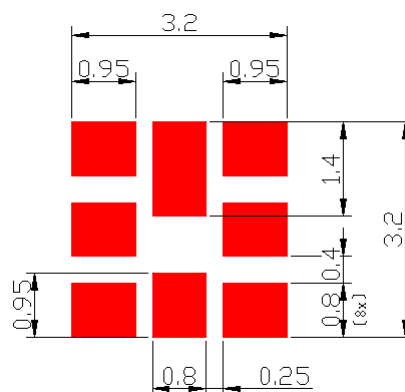


A, B: Balance Input  
 E, F: Balance Output  
 C, D, G, H: Ground  
 Unit: mm

**D. MEASUREMENT CIRCUIT:**



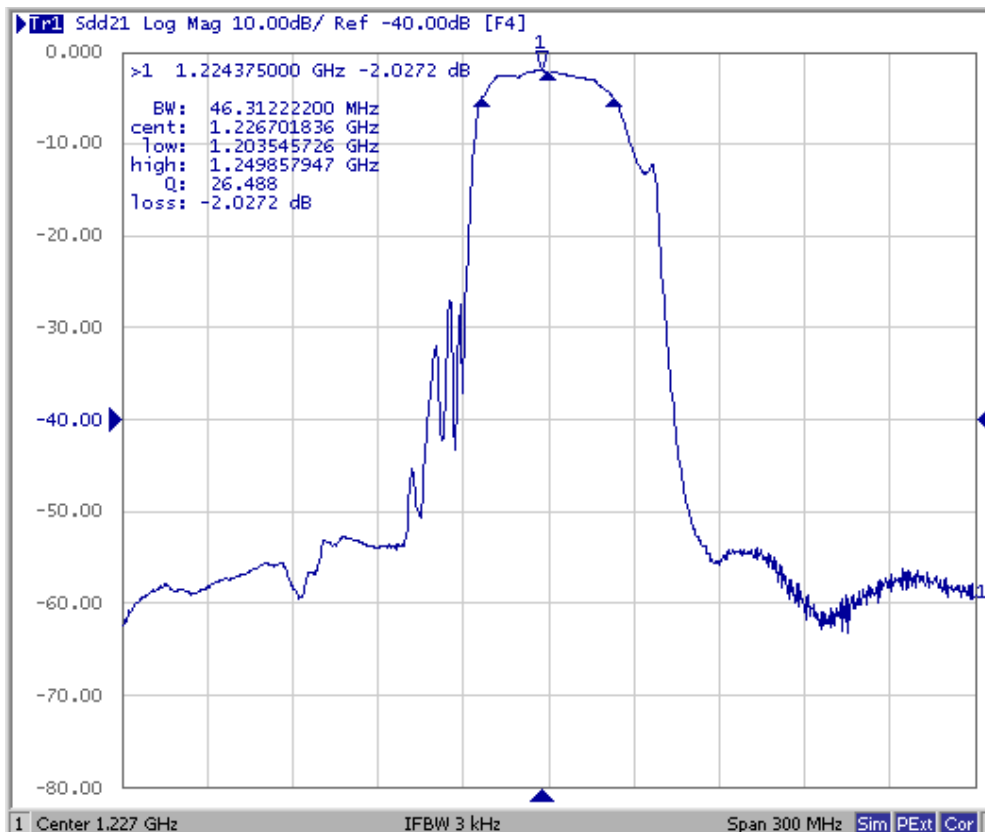
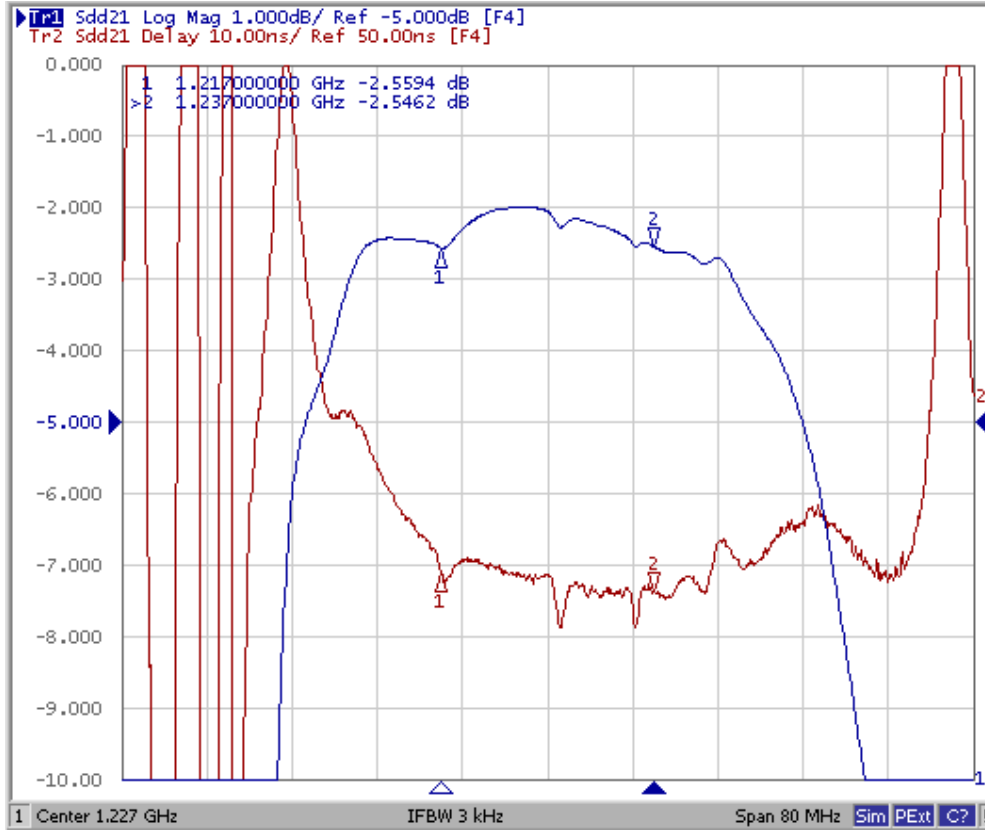
**E. PCB FOOTPRINT:**



**SAW Filter 1227.0MHz**  
**Part No: MP03775**

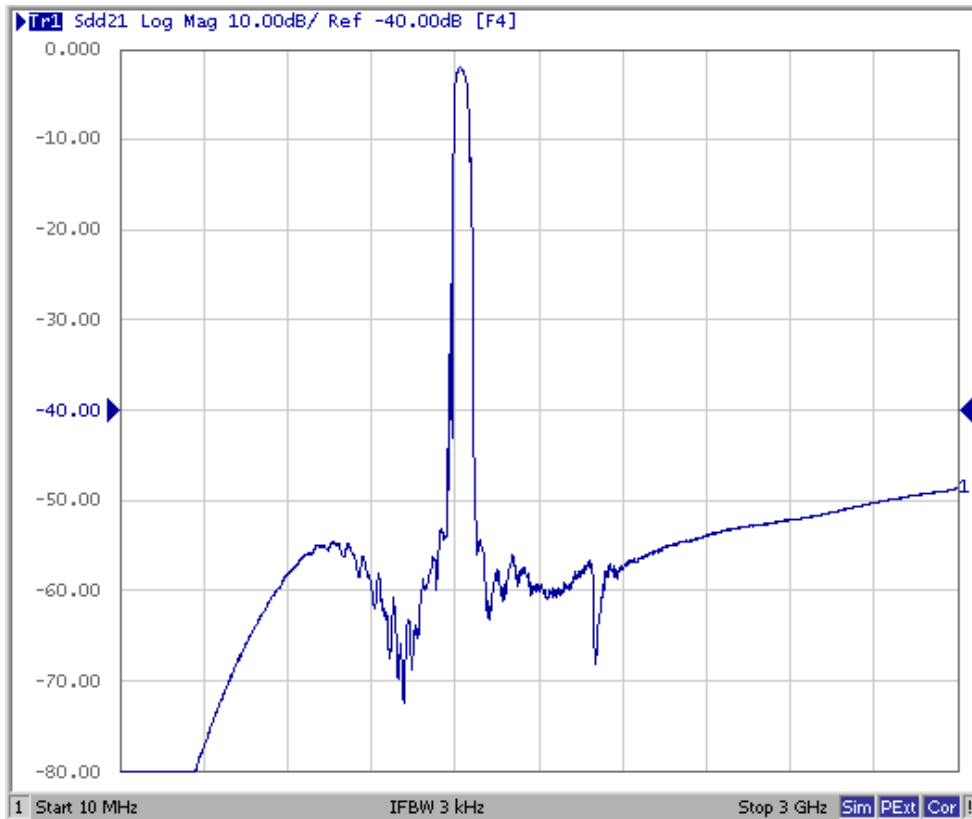
**Model: TA1033A**  
**Rev No: 1**

**F. FREQUENCY CHARACTERISTICS:**



**SAW Filter 1227.0MHz**  
**Part No: MP03775**

**Model: TA1033A**  
**Rev No: 1**

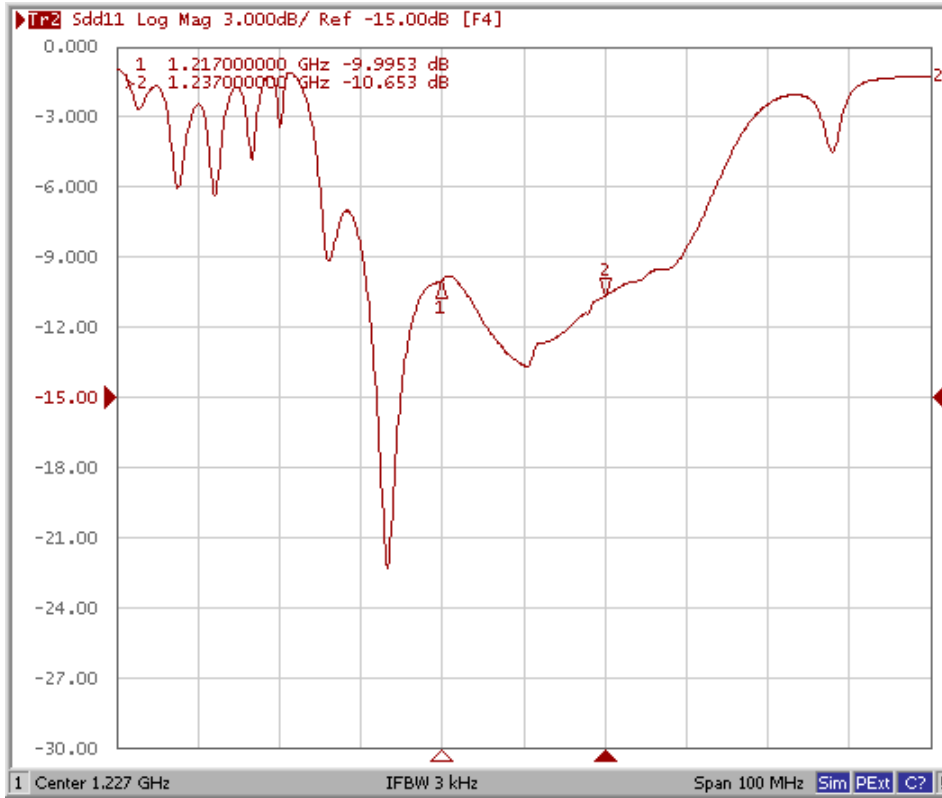


**SAW Filter 1227.0MHz**  
**Part No: MP03775**

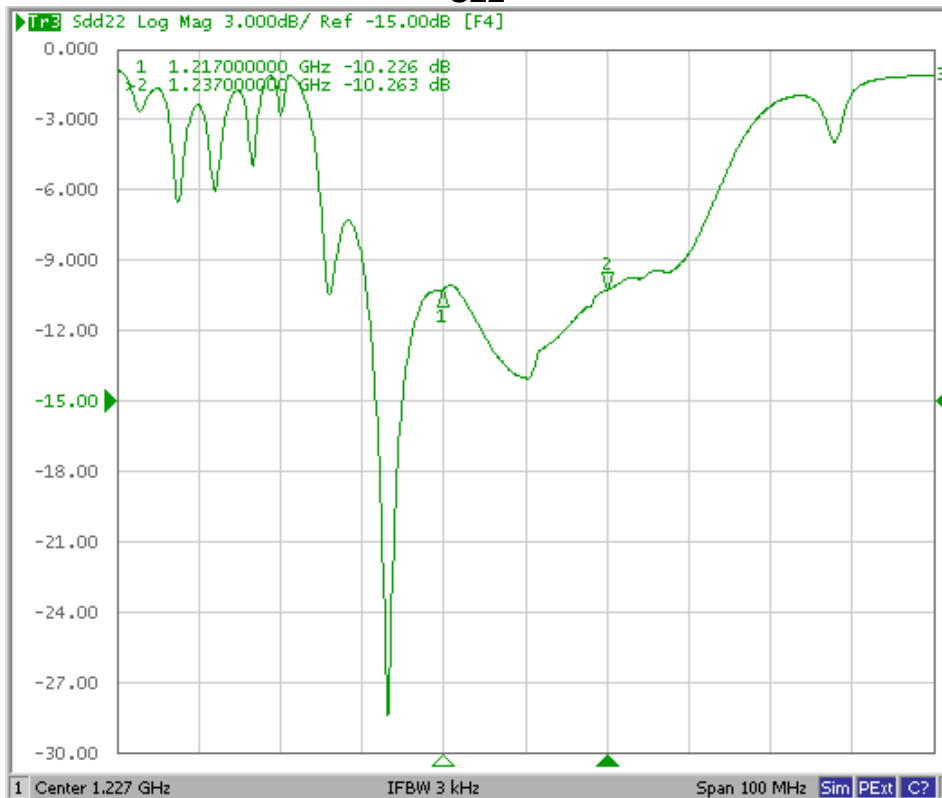
**Model: TA1033A**  
**Rev No: 1**

Reflection Functions

S11



S22



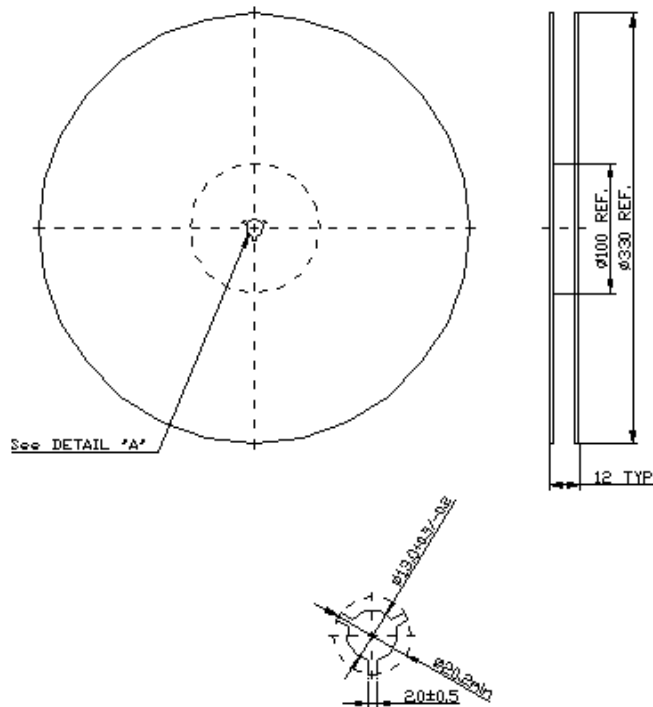
**SAW Filter 1227.0MHz**  
**Part No: MP03775**

**Model: TA1033A**  
**Rev No: 1**

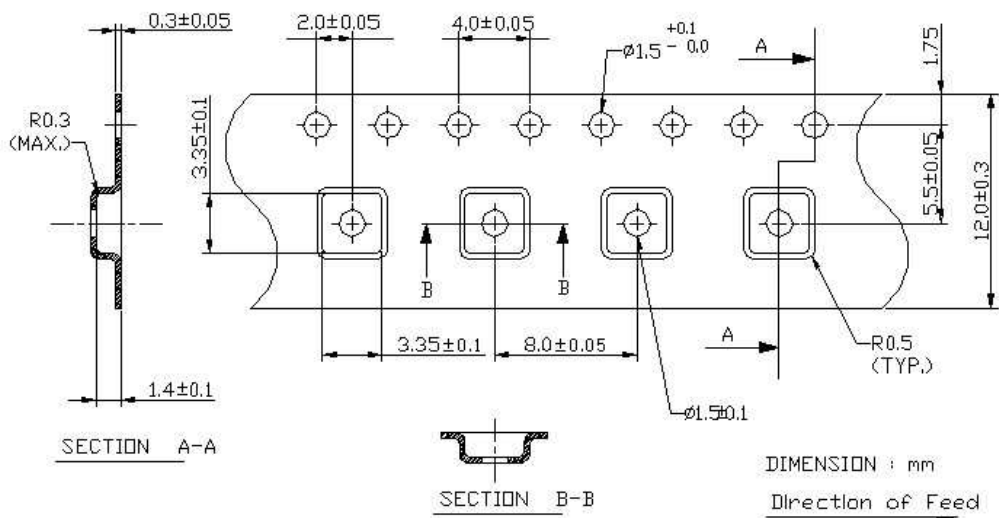
**G. PACKING:**

1. REEL DIMENSION

(Reel Count: 7" = 1000; 13" = 3000)



2. TAPE DIMENSION



**SAW Filter 1227.0MHz**  
**Part No: MP03775**

**Model: TA1033A**  
**Rev No: 1**

**H. RECOMMENDED REFLOW PROFILE:**

