

110.5920MHz SAW Filter
Part No: MA09828

Model: TB0603A
Rev No: 2

A. MAXIMUM RATING:

1. Operating Temperature: -40°C~+85°C
2. Storage Temperature: -40°C~+85°C
3. Input Power Level: 10dBm
4. Moisture Sensitivity Level: Level 1 (MSL1)

B. CHARACTERISTICS:

1. Ambient Temperature: 25°C
2. Terminating Source Impedance: Single ended 50ohm
3. Terminating Load Impedance: Single ended 50ohm

Item	Unit	Min.	Typ.	Max.
Center frequency Fc	MHz	-	110.592	-
Insertion Loss IL	dB	-	8.6	10
3dB Bandwidth	MHz	1.152	1.44	-
Group Delay Variation Fc 0.576	nsec	-	150	200
Rejection				
DC to Fc-3.4MHz		38	42	-
Fc-3.4MHz to Fc-1.728MHz	dB	28	42	-
Fc+1.728MHz to Fc+3.4MHz		28	34	-
Fc+3.4MHz to 200MHz		38	42	-

110.5920MHz SAW Filter
Part No: MA09828

Model: TB0603A
Rev No: 2

C. FREQUENCY CHARACTERISTICS:

1. S21 Response

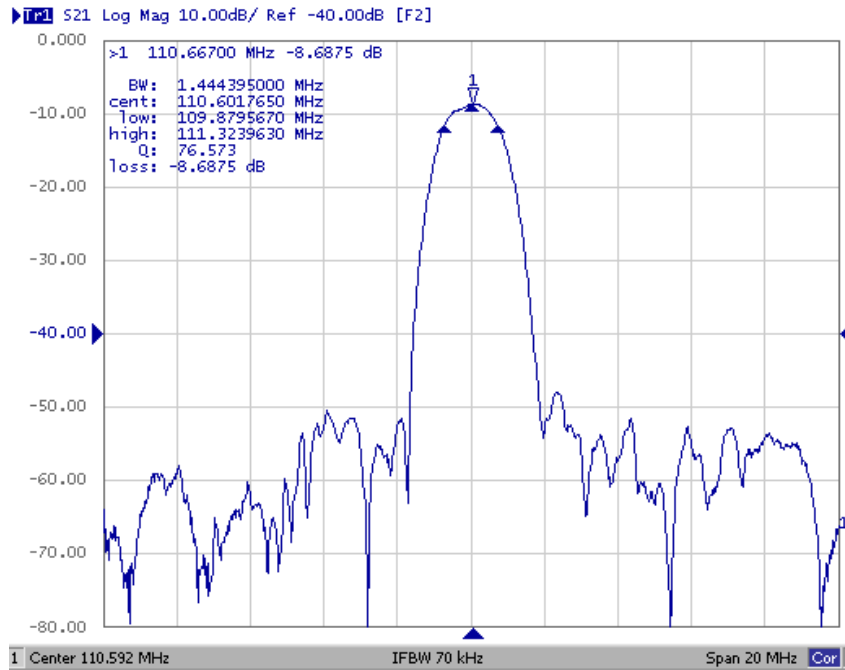


Fig. 1 Horizontal: 2MHz/Div; Vertical: 10dB/Div

2. Passband Response

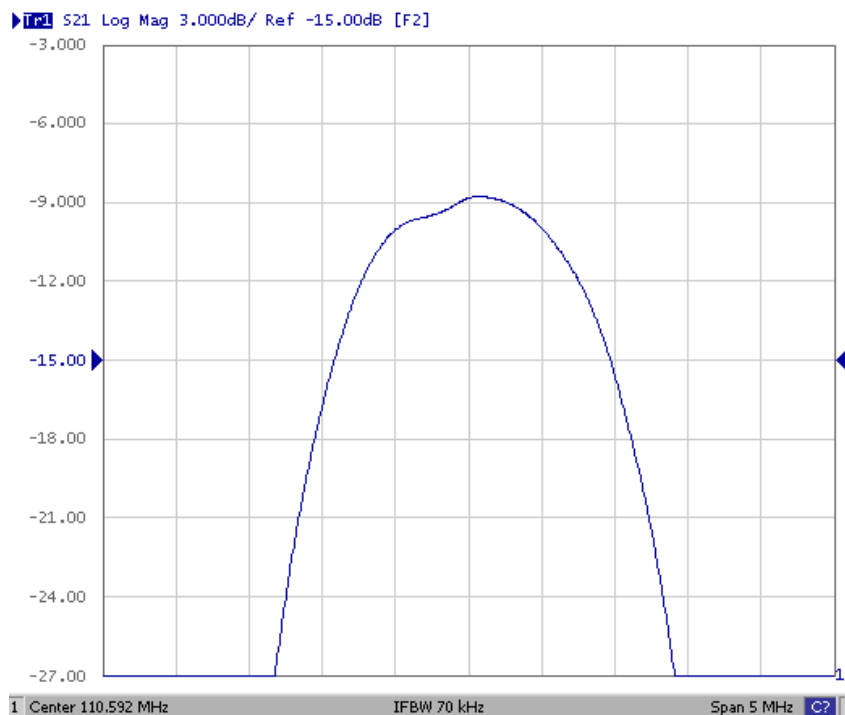


Fig. 2 Passband Horizontal: 0.5MHz/Div; Vertical: 3dB/Div

110.5920MHz SAW Filter
Part No: MA09828

Model: TB0603A
Rev No: 2

3. Group Delay

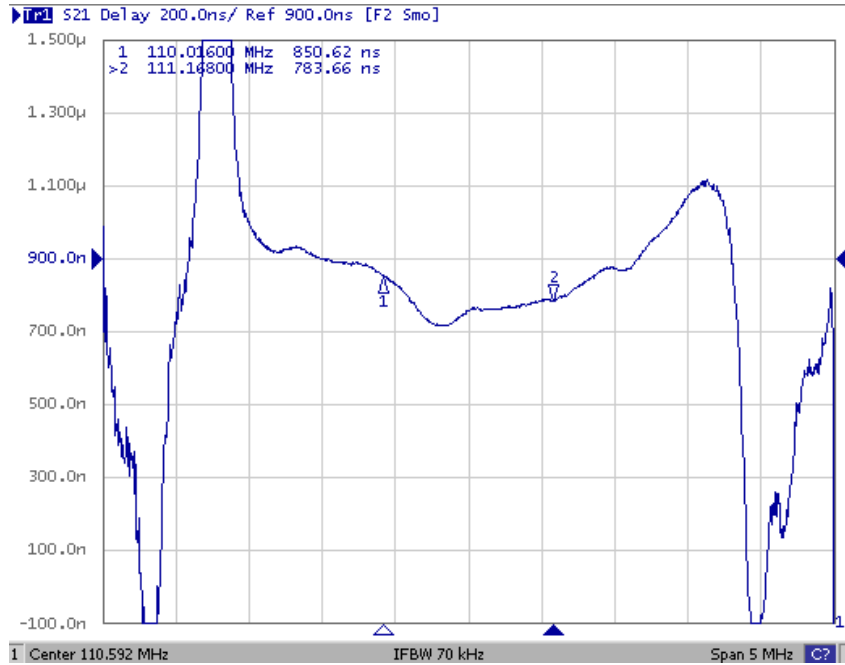
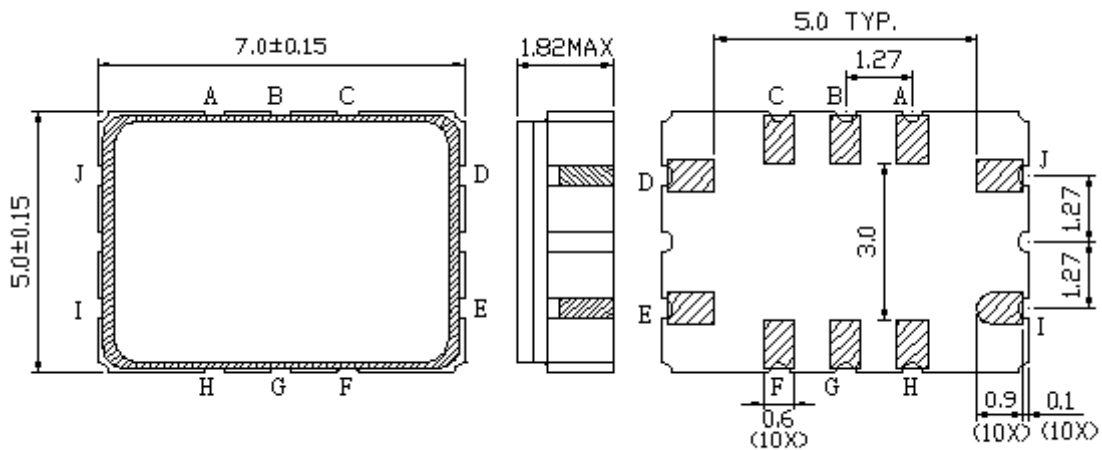


Fig. 3 Passband Horizontal: 0.5MHz/Div; Vertical: 200nS/Div

D. OUTLINE DRAWING:

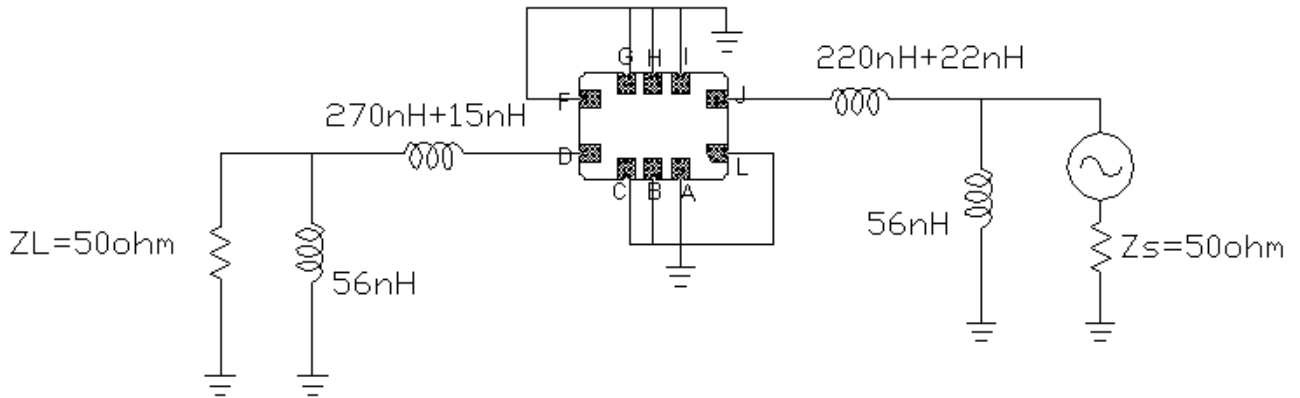


- J: RF Input
 - L: RF Input ground
 - D: RF Output
 - F: RF Output ground
 - A, B, C, G, H, I: To be ground
- Unit: mm

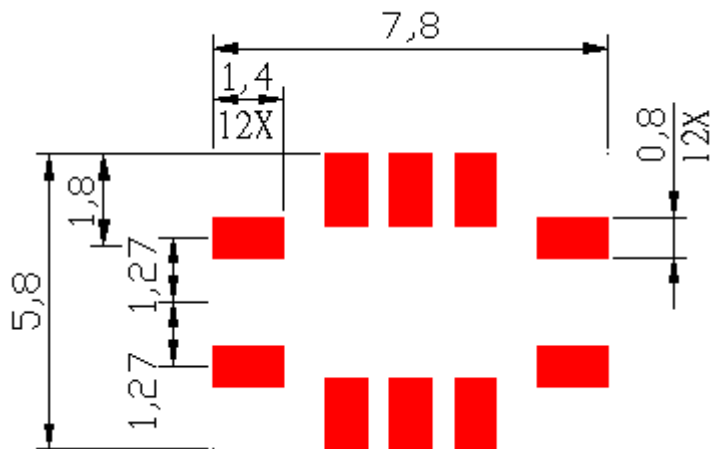
110.5920MHz SAW Filter
Part No: MA09828

Model: TB0603A
Rev No: 2

E. MEASUREMENT CIRCUIT:



F. PCB FOOTPRINT:

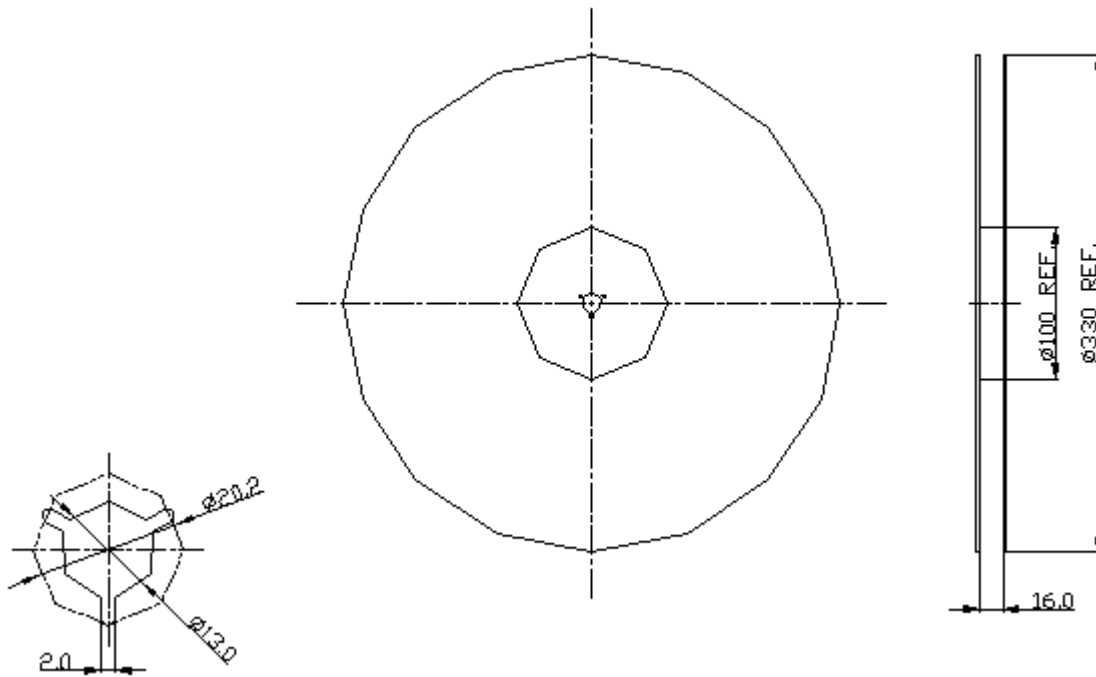


110.5920MHz SAW Filter
Part No: MA09828

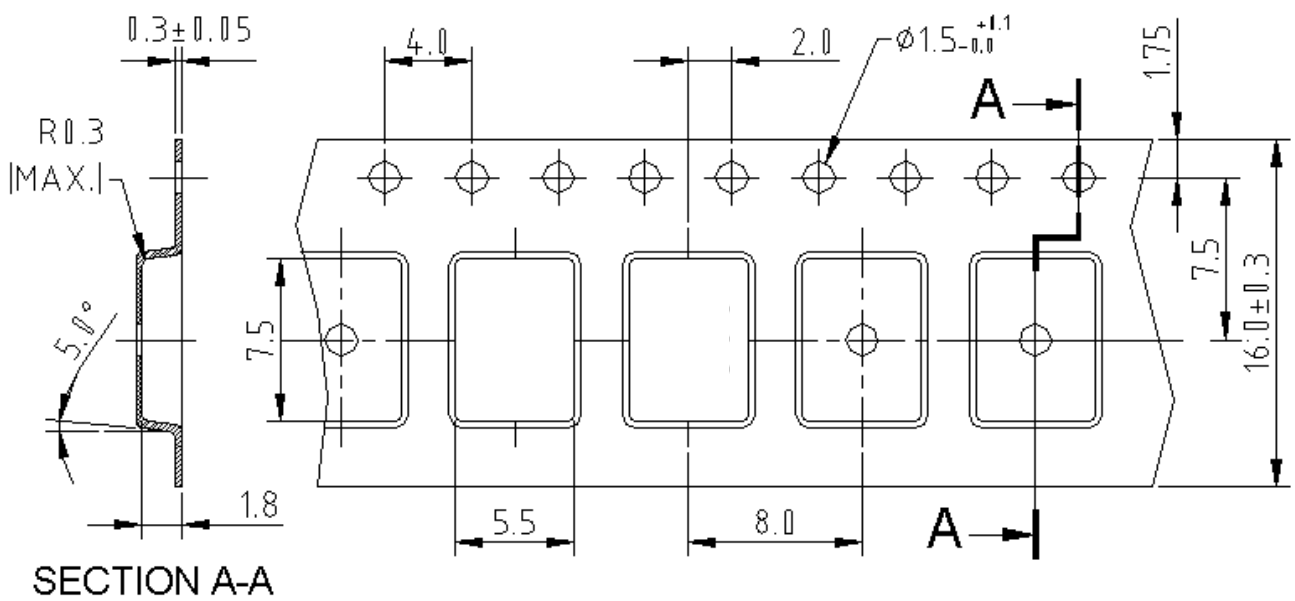
Model: TB0603A
Rev No: 2

G. PACKING:

1. Reel Dimensions



2. Tape Dimensions



110.5920MHz SAW Filter
Part No: MA09828

Model: TB0603A
Rev No: 2

H. RECOMMENDED REFLOW PROFILE:

1. Preheating shall be fixed at 150~180°C for 60~90 seconds.
2. Ascending time to preheating temperature 150°C shall be 30 seconds min.
3. Heating shall be fixed at 220°C for 50~80 seconds and at 260°C +0/-5°C peak (20~40sec).
4. Time: 2 times.

