

**SAW Filter 44.0MHz**  
**Part No: MA08462**

**Model: TB0362A**  
**Rev. No: 2**

**A. MAXIMUM RATING:**

1. Input Power Level: 10dBm
2. Operating Temperature: -40°C to +85°C
3. Storage Temperature: -40°C to +85°C

**B. CHARACTERISTICS:**

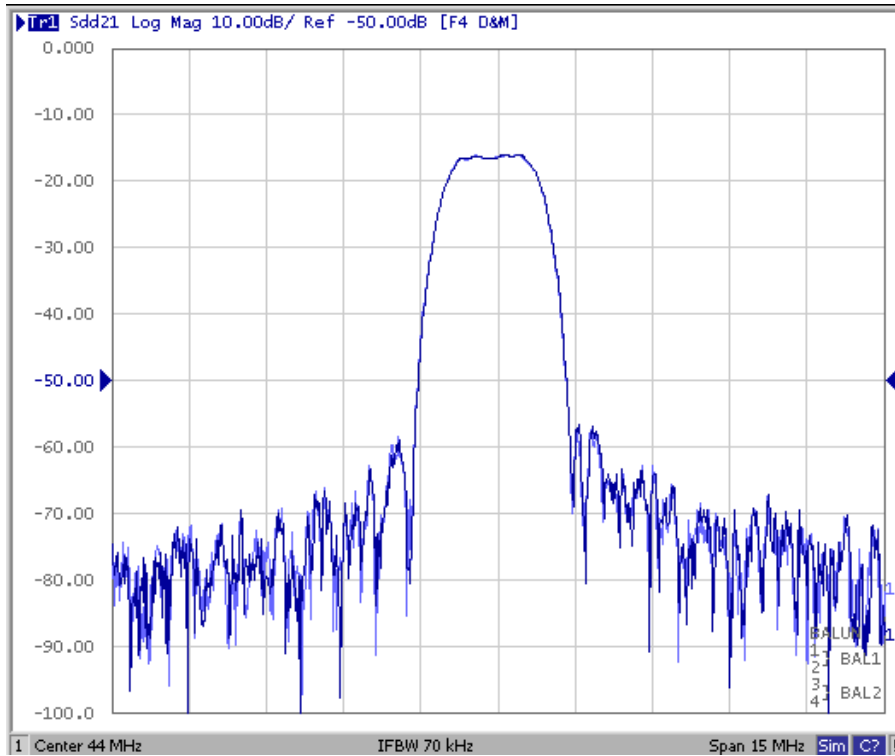
Item	Unit	Min.	Typ.	Max.
Center frequency Fc	MHz	-	44	-
Insertion Loss IL	dB	-	16	17.5
3 dB Bandwidth	MHz	1.7	1.8	
Pass band Ripple Fc ± 0.45MHz	dB	-	0.6	1.0
Relative Attenuation Fc ± 0.96MHz	dB	4	5.5	
Relative Attenuation Fc ± 1.0MHz	dB	5	6.7	
Relative Attenuation Fc ± 1.75MHz	dB	38	42	
Relative Attenuation 26.5MHz to 42.5MHz	dB	38	41	
Relative Attenuation 46.5MHz to 61.5MHz	dB	38	52	

**SAW Filter 44.0MHz**  
**Part No: MA08462**

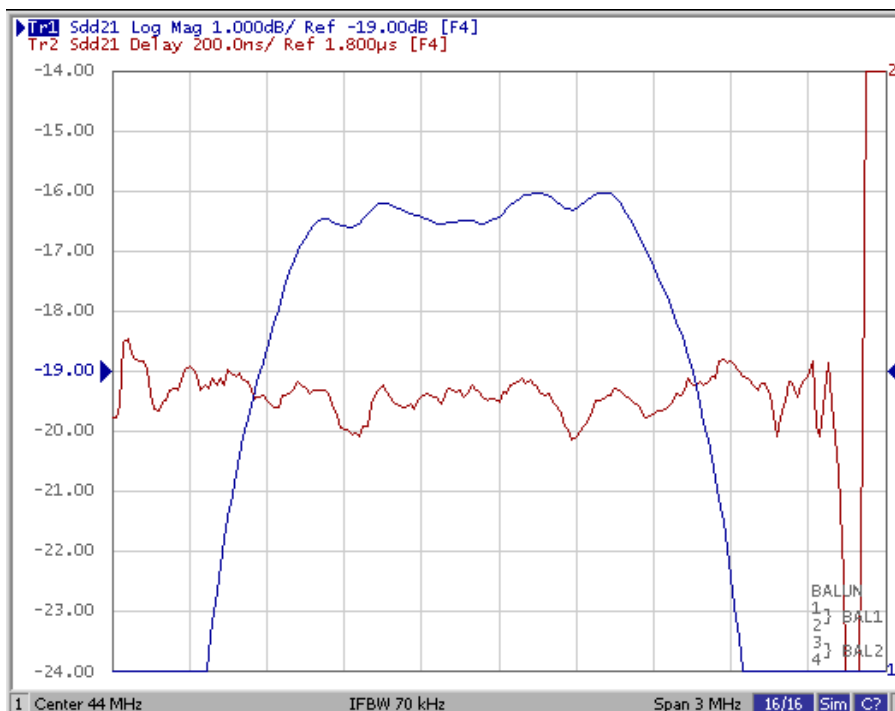
**Model: TB0362A**  
**Rev. No: 2**

**C. FREQUENCY CHARACTERISTICS:**

1. Frequency Response



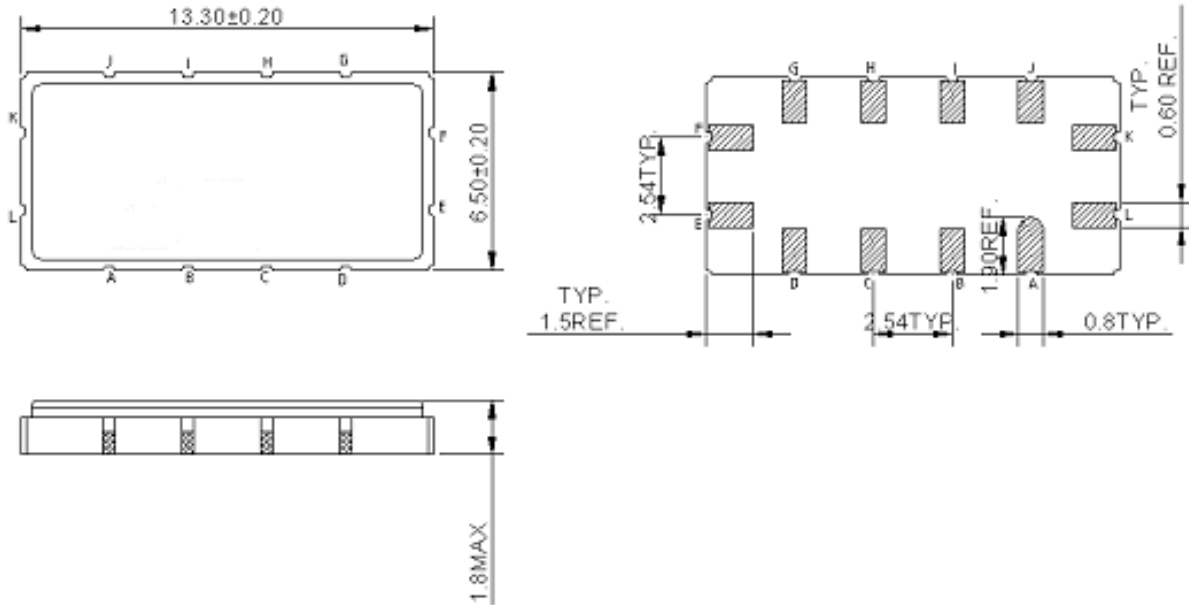
2. Passband response and Group Delay Variation



**SAW Filter 44.0MHz**  
**Part No: MA08462**

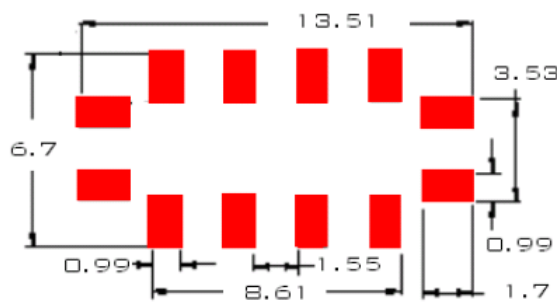
**Model: TB0362A**  
**Rev. No: 2**

**D. OUTLINE DRAWING:**

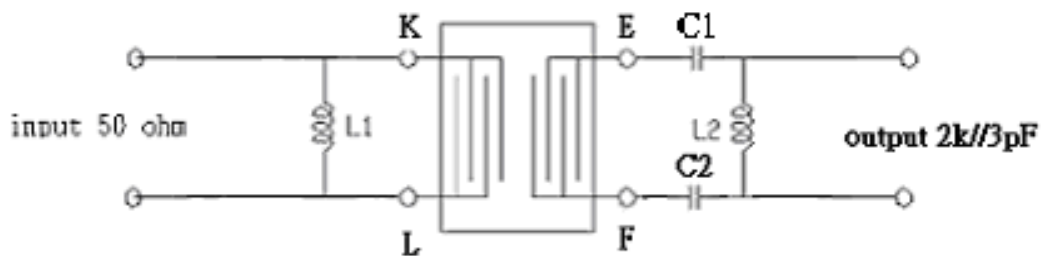


K, L: RF input  
 E, F: RF output  
 A, B, C, D, G, H, I, J: To be Ground

**E. PCB FOOTPRINT:**



**F. MATCHING CIRCUIT:**



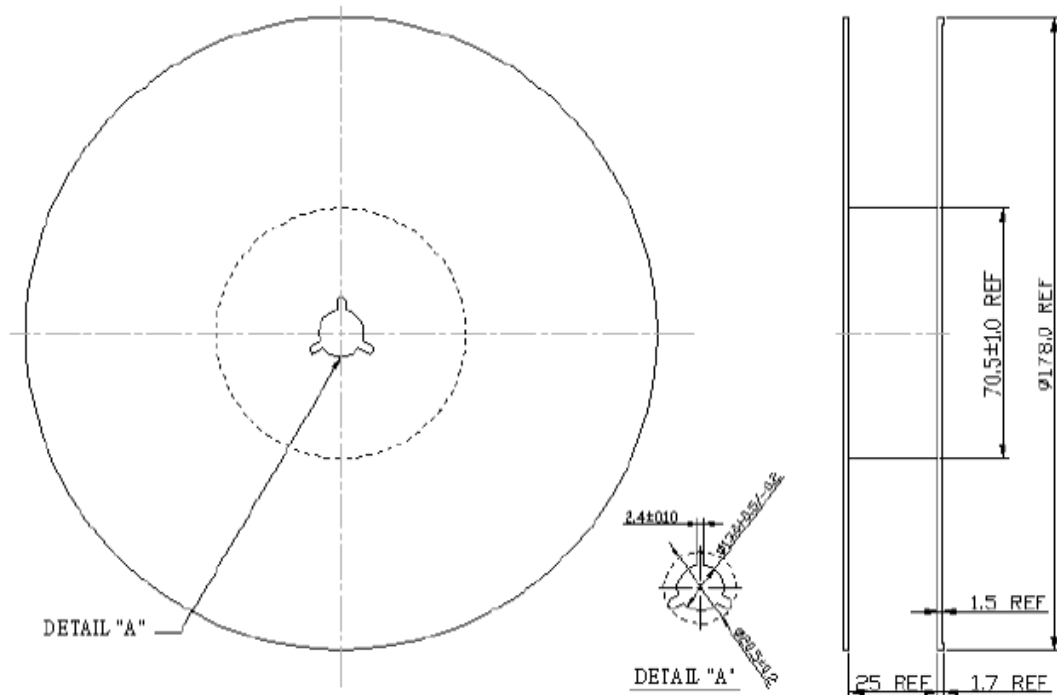
L1 = 270nH, C1 = C2 = 59pF, L2 = 560nH

**SAW Filter 44.0MHz**  
**Part No: MA08462**

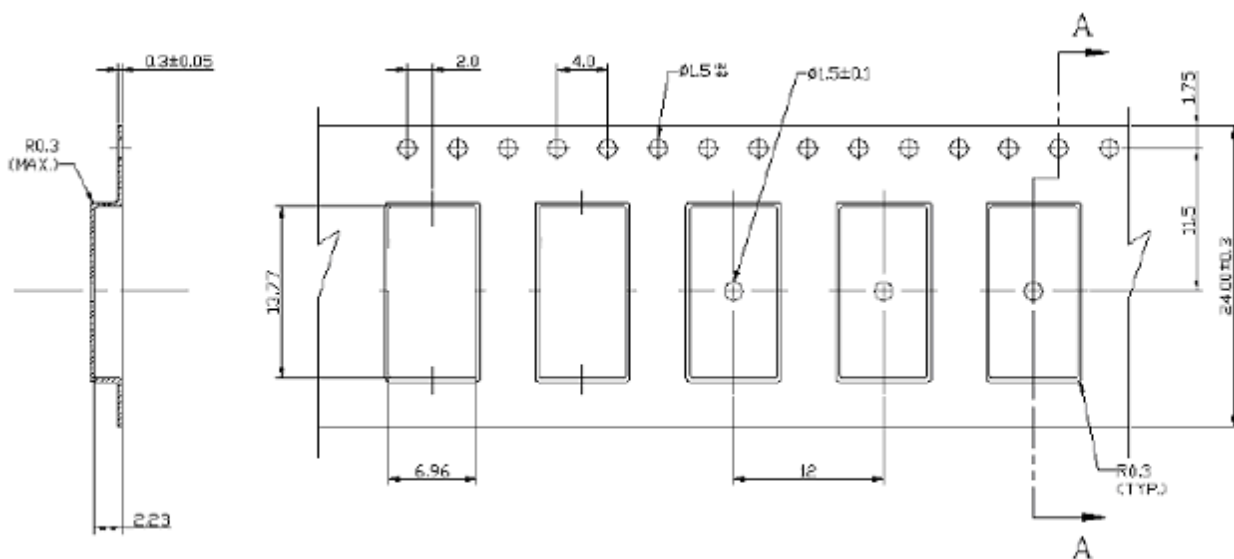
**Model: TB0362A**  
**Rev. No: 2**

**G. PACKING:**

1. Reel Dimension



2. Tape Dimension



**SAW Filter 44.0MHz**  
**Part No: MA08462**

**Model: TB0362A**  
**Rev. No: 2**

**H. RECOMMENDED REFLOW PROFILE:**

