

**SAW Filter 1216.80MHz**  
**Part No: MP05578**

**Model: TA1597A**  
**Rev No: 1**

**A. MAXIMUM RATING:**

**Electrostatic Sensitive Device (ESD)**

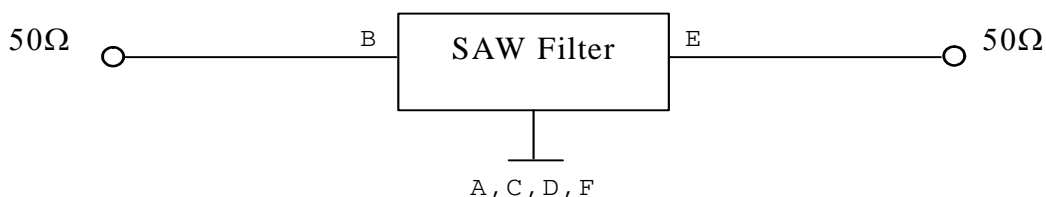
1. Input Power Level: 10dBm
2. DC voltage: 3V
3. Operating Temperature: -40°C to +85°C
4. Storage Temperature: -40°C to +85°C

**B. ELECTRICAL CHARACTERISTICS:**

Item	Unit	Min.	Typ.	Max.
Center frequency Fc	MHz	-	1216.8	-
Insertion Loss at Fc IL	dB	-	3.5	4.5
1dB BW	MHz	1.6	18	-
Amplitude Ripple (1216 ~ 1217.6MHz)	dB	-	0.1	1.0
Attenuation (Reference level from 0dB)				
1016.8 ~ 1176.8MHz	dB	40	50	-
1176.8 ~ 1186.8MHz	dB	25	40	-
1246.8 ~ 1256.8MHz	dB	25	40	-
1256.8 ~ 1416.8MHz	dB	40	50	-
Temperature Coefficient of Frequency	ppm/°C	-	-36	-

**C. MEASUREMENT CIRCUIT:**

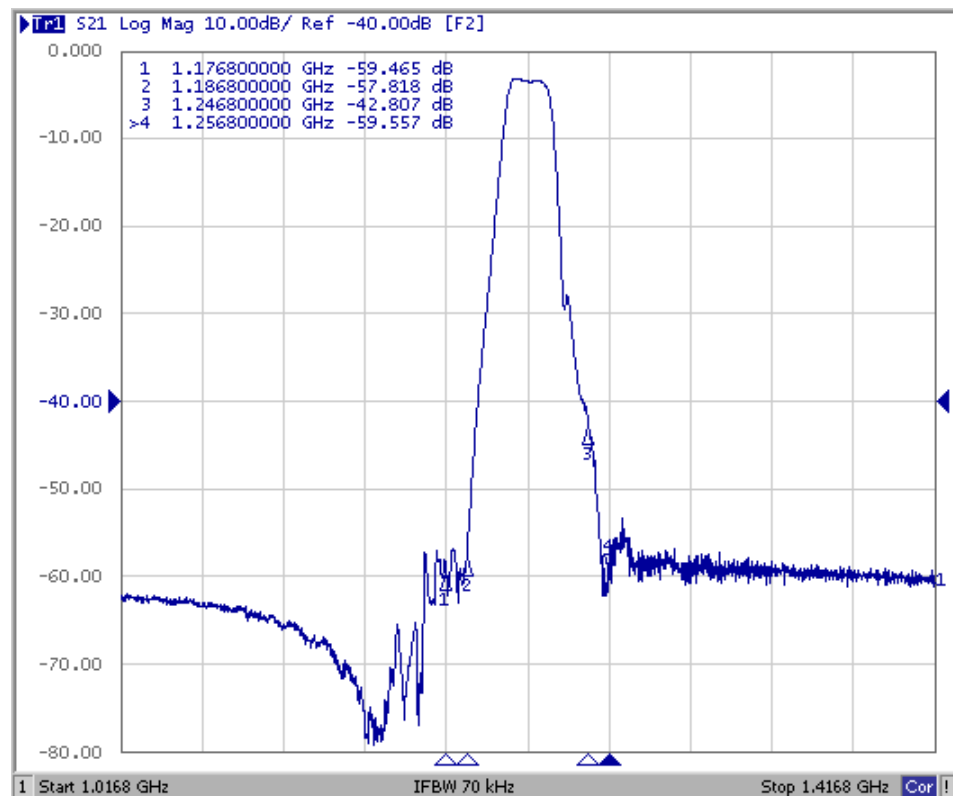
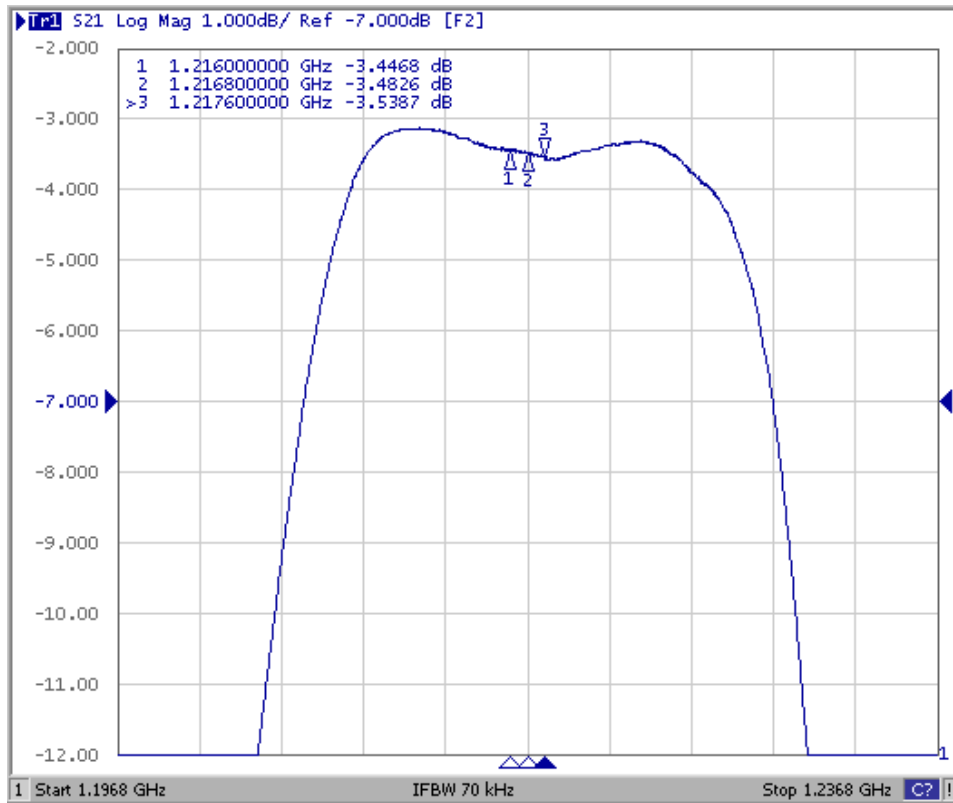
HP Network analyzer



**SAW Filter 1216.80MHz**  
**Part No: MP05578**

**Model: TA1597A**  
**Rev No: 1**

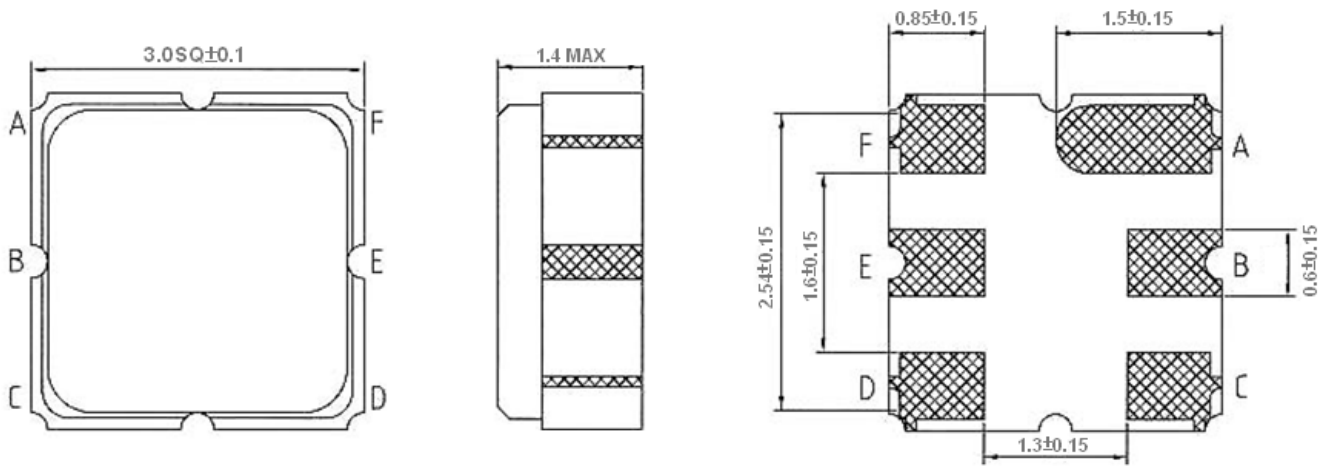
**D. FREQUENCY CHARACTERISTICS:**



**SAW Filter 1216.80MHz**  
**Part No: MP05578**

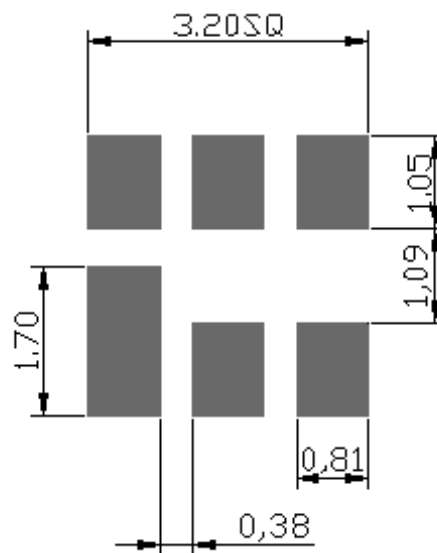
**Model: TA1597A**  
**Rev No: 1**

**E. OUTLINE DRAWING:**



B: Input  
E: Output  
A, C, D, F: Ground  
Unit: mm

**F. PCB FOOTPRINT:**

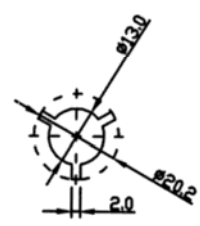
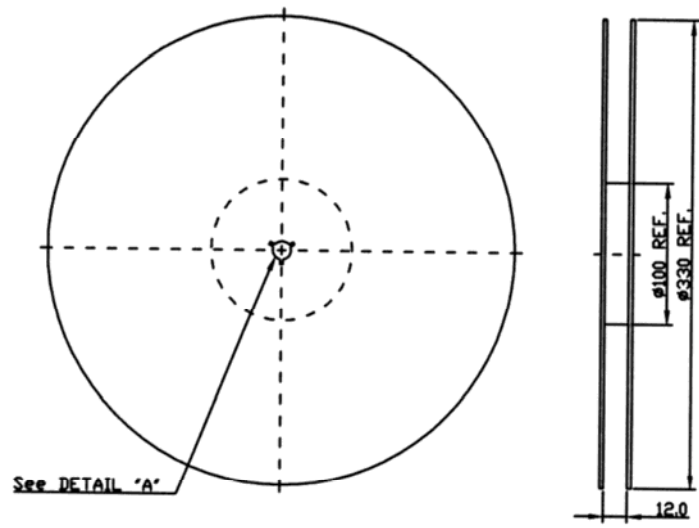


**SAW Filter 1216.80MHz**  
**Part No: MP05578**

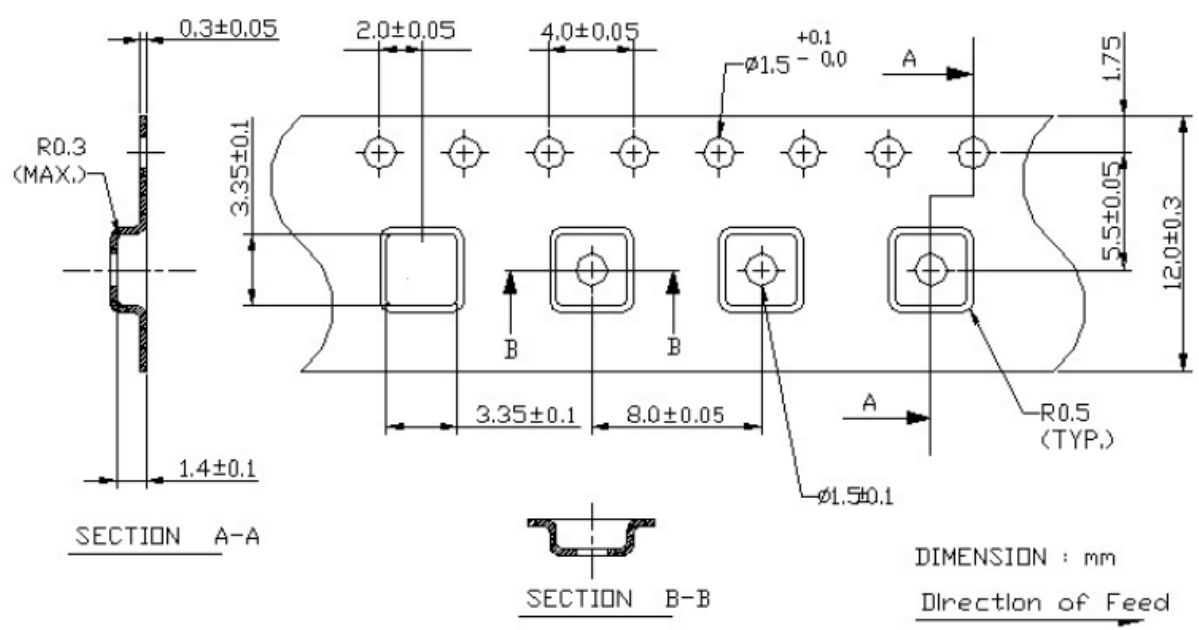
**Model: TA1597A**  
**Rev No: 1**

**G. PACKING:**

1. Reel Dimension



2. Tape Dimension



**SAW Filter 1216.80MHz**  
**Part No: MP05578**

**Model: TA1597A**  
**Rev No: 1**

**H. RECOMMENDED REFLOW PROFILE:**

