

SAW Filter 942.50MHz
Part No: MP07847

Model: TA1839C
Rev No: 1

A. MAXIMUM RATING:

Electrostatic Sensitive Device (ESD)

1. Maximum input power: +10dBm (In Passband)
2. Maximum DC Voltage: ±5V (Device only)
3. Operating temperature: -20°C to +85°C
4. Device storage temperature: -40°C to +100°C
5. Moisture Sensitive Level: Level 1

B. ELECTRICAL CHARACTERISTICS:

1. Terminating source impedance: $Z_S = 50\Omega$ (Single-ended)
2. Terminating load impedance: $Z_L = 50\Omega$ (Single-ended)

Parameters Description			Unit	Min.	Typ.	Max.
Center Frequency			MHz	-	942.5	-
Insertion Loss (*1)		925 ~ 960MHz	dB	-	2.0	3.0
Amplitude Ripple		925 ~ 960MHz	dB	-	1.3	2.3
VSWR	Input	925 ~ 960MHz	-	-	1.9	2.3
	Output	925 ~ 960MHz	-	-	2.0	2.3
Attenuation:						
880~915 MHz			dB	46	48	-
980~1558 MHz			dB	15	26	-
1559~1607 MHz			dB	40	51	-
1850~1920 MHz			dB	35	44	-
2400`2500 MHz			dB	30	38	-
2775~2880 MHz			dB	28	36	-
3700~3840 MHz			dB	25	32	-
4625~4800 MHz			dB	20	30	-
4900~5950 MHz			dB	18	27	-
5550~5725 MHz			dB	18	27	-
6475~6720 MHz			dB	15	25	-
7400~7680 MHz			dB	15	23	-

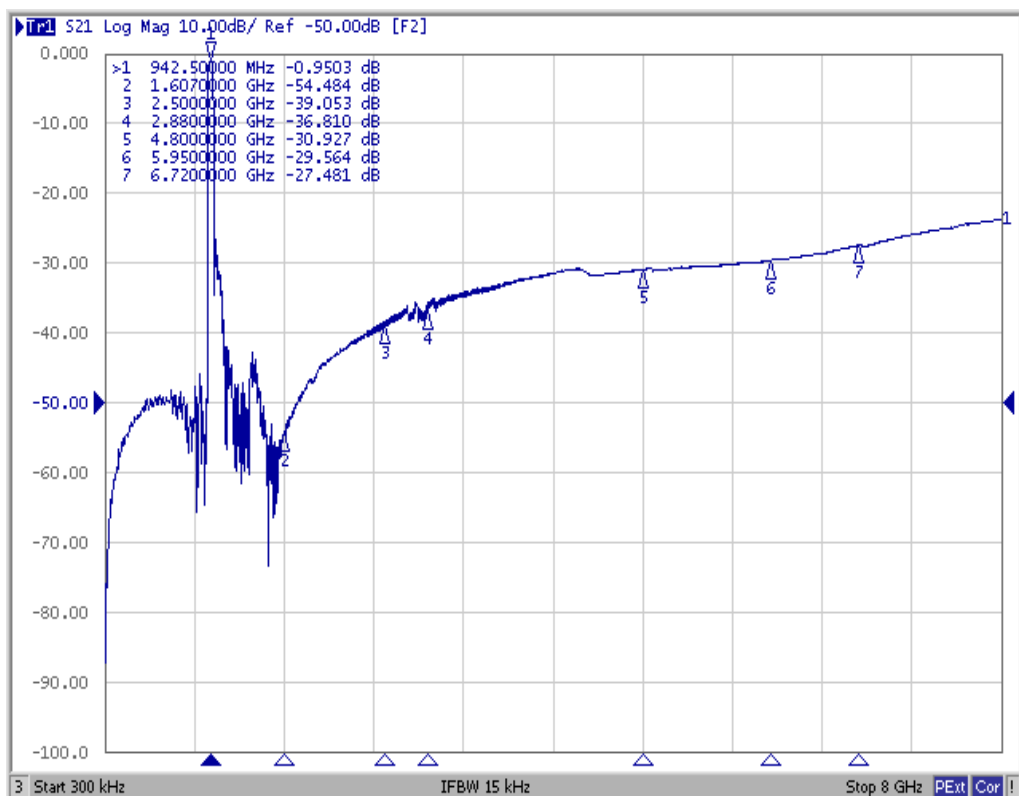
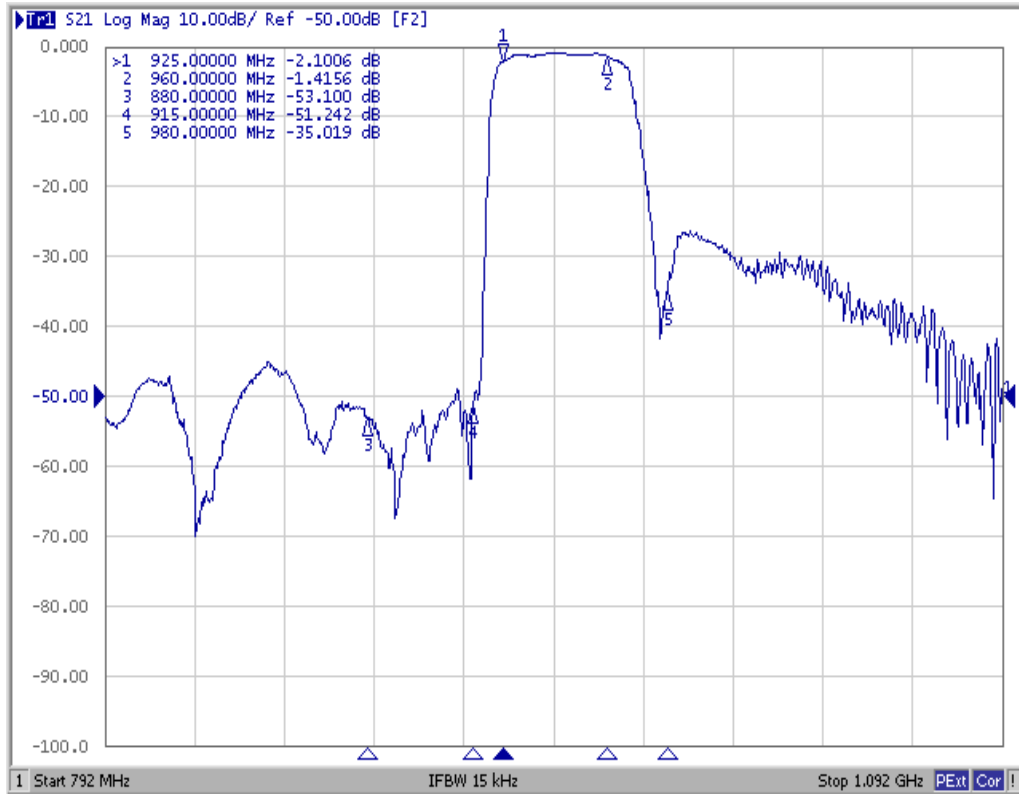
(*1) Specification of insertion loss excludes loss that comes from the test board.

SAW Filter 942.50MHz
Part No: MP07847

Model: TA1839C
Rev No: 1

C. FREQUENCY CHARACTERISTICS:

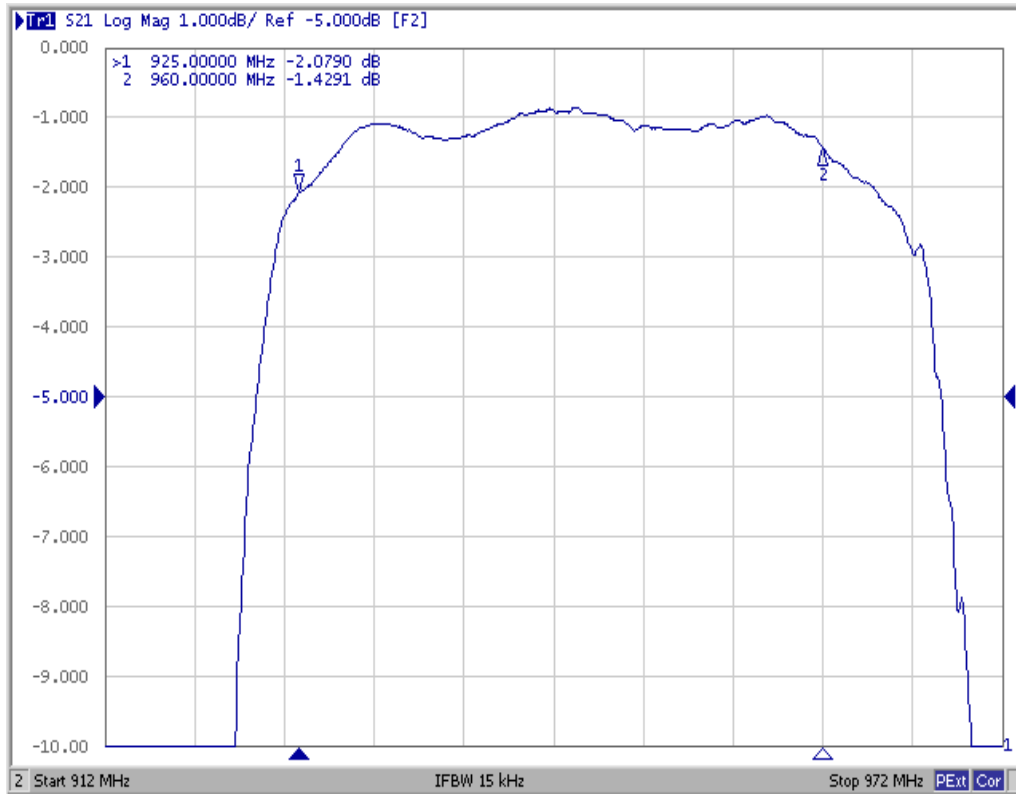
1. Frequency Response



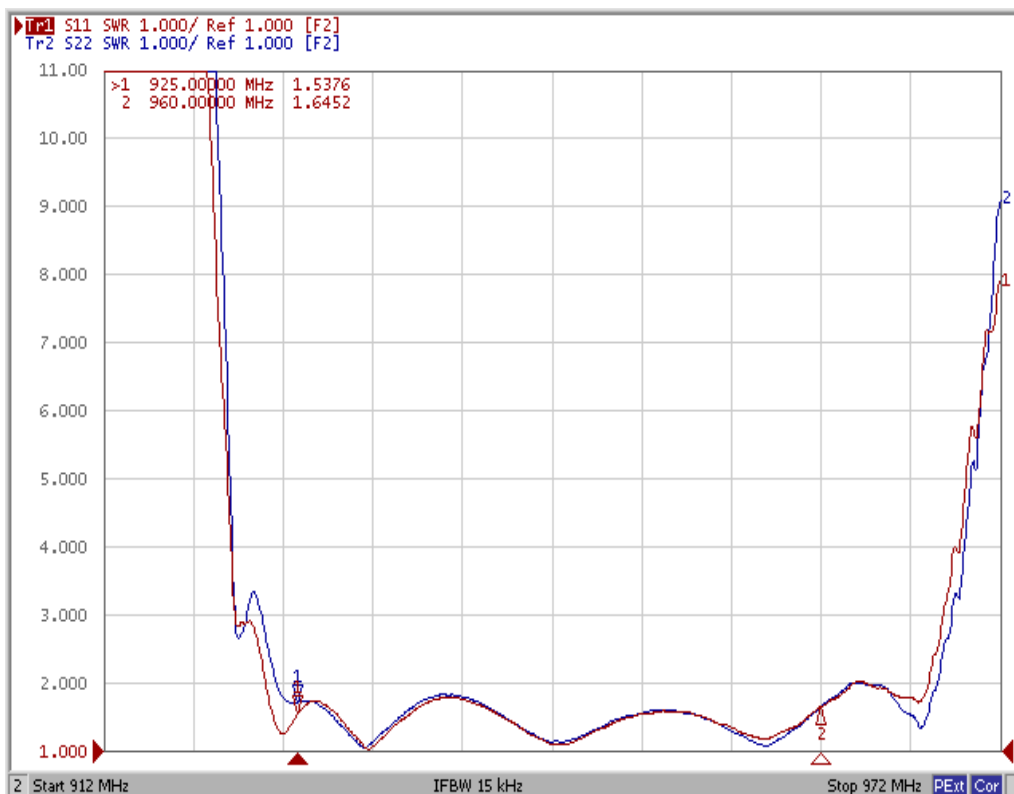
SAW Filter 942.50MHz
Part No: MP07847

Model: TA1839C
Rev No: 1

2. Ripple



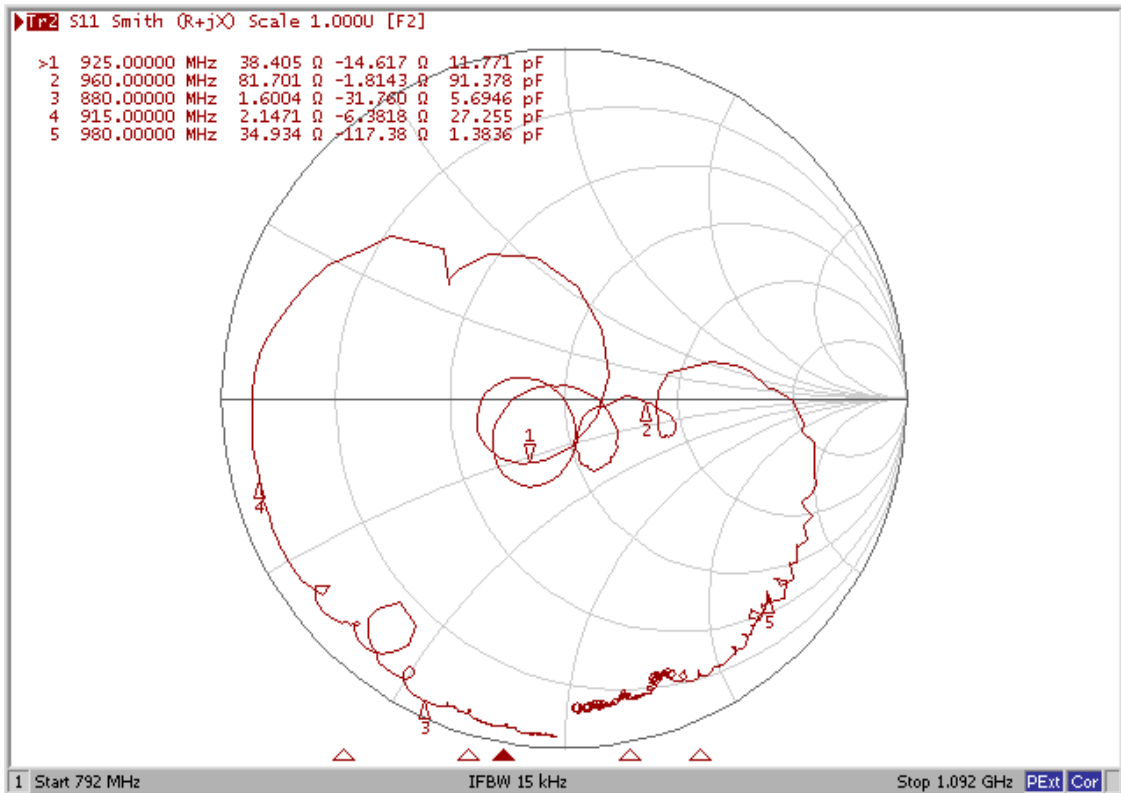
3. VSWR



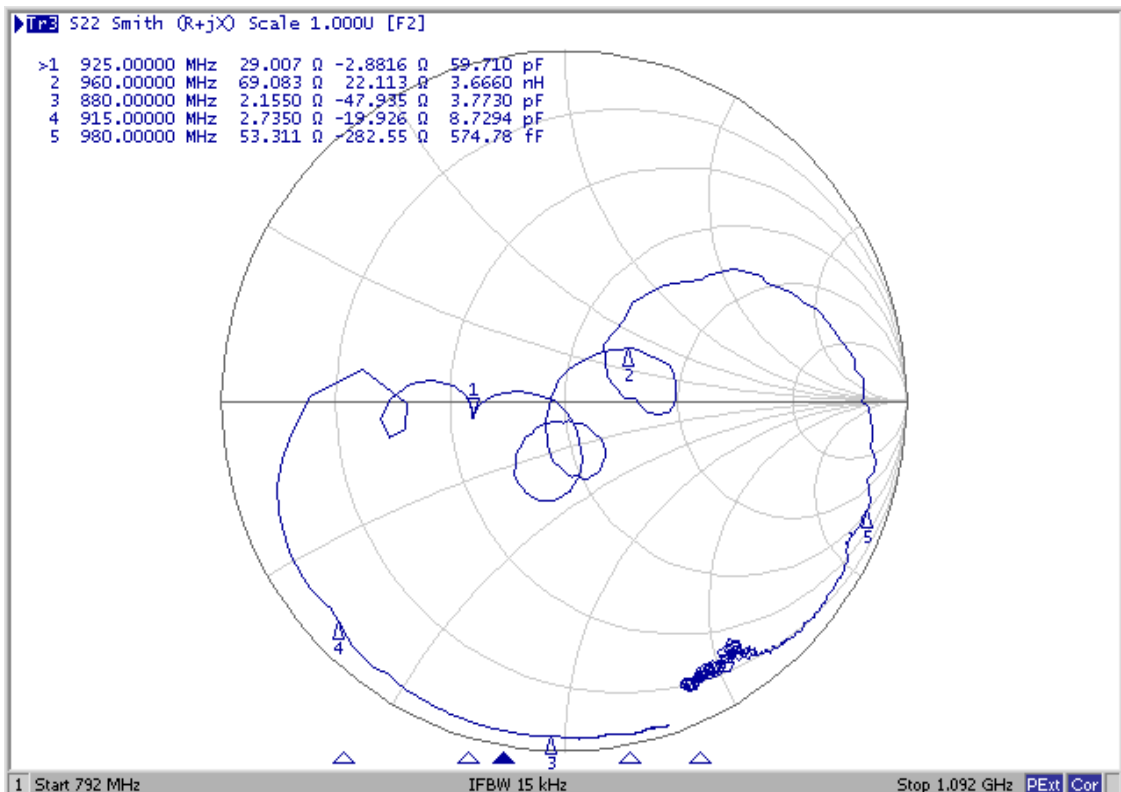
SAW Filter 942.50MHz
Part No: MP07847

Model: TA1839C
Rev No: 1

4. S11



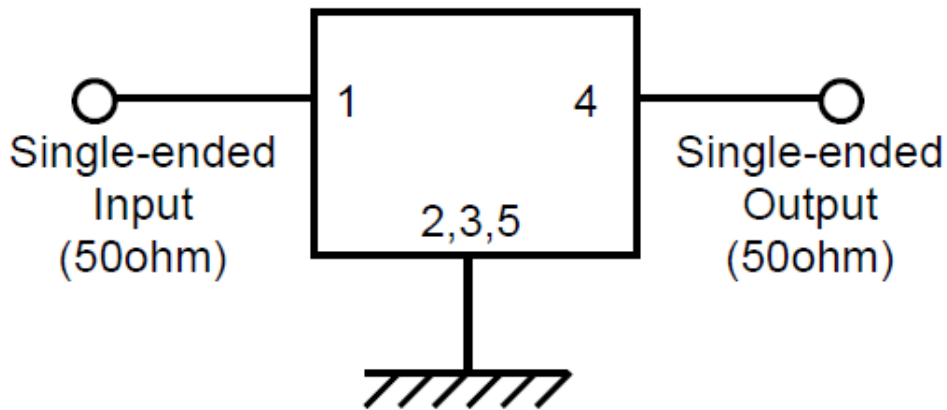
5. S22



SAW Filter 942.50MHz
Part No: MP07847

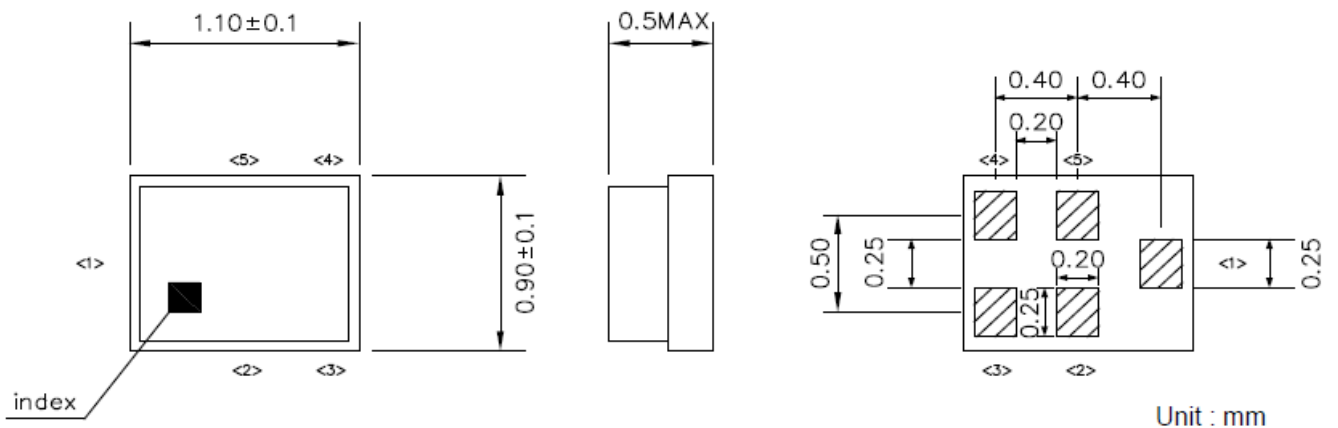
Model: TA1839C
Rev No: 1

D. MEASUREMENT CIRCUIT:



E. OUTLINE DRAWING:

Device size: 1.1typ. x 0.9typ. x 0.5max



Pin Configuration

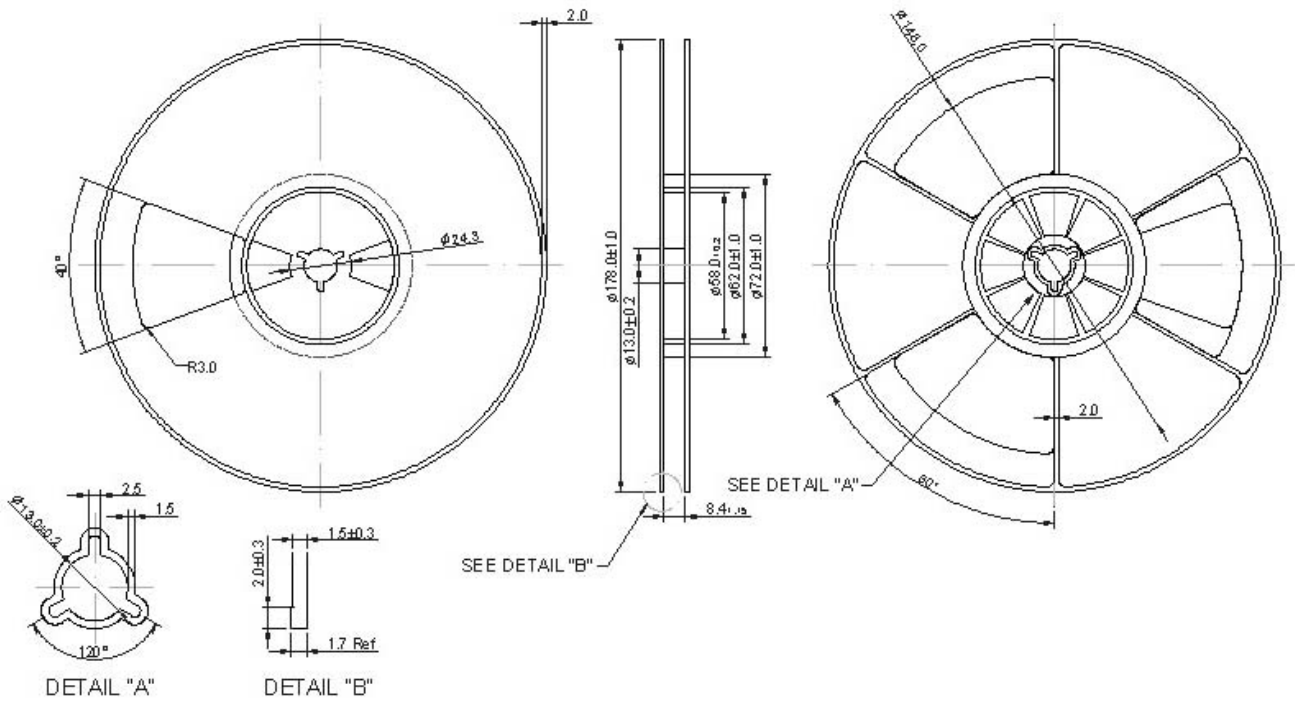
Pin No.	Symbol	Function
1	IN	Single-ended pin
2	GND	Ground
3	GND	Ground
4	OUT	Single-ended pin
5	GND	Ground

SAW Filter 942.50MHz
Part No: MP07847

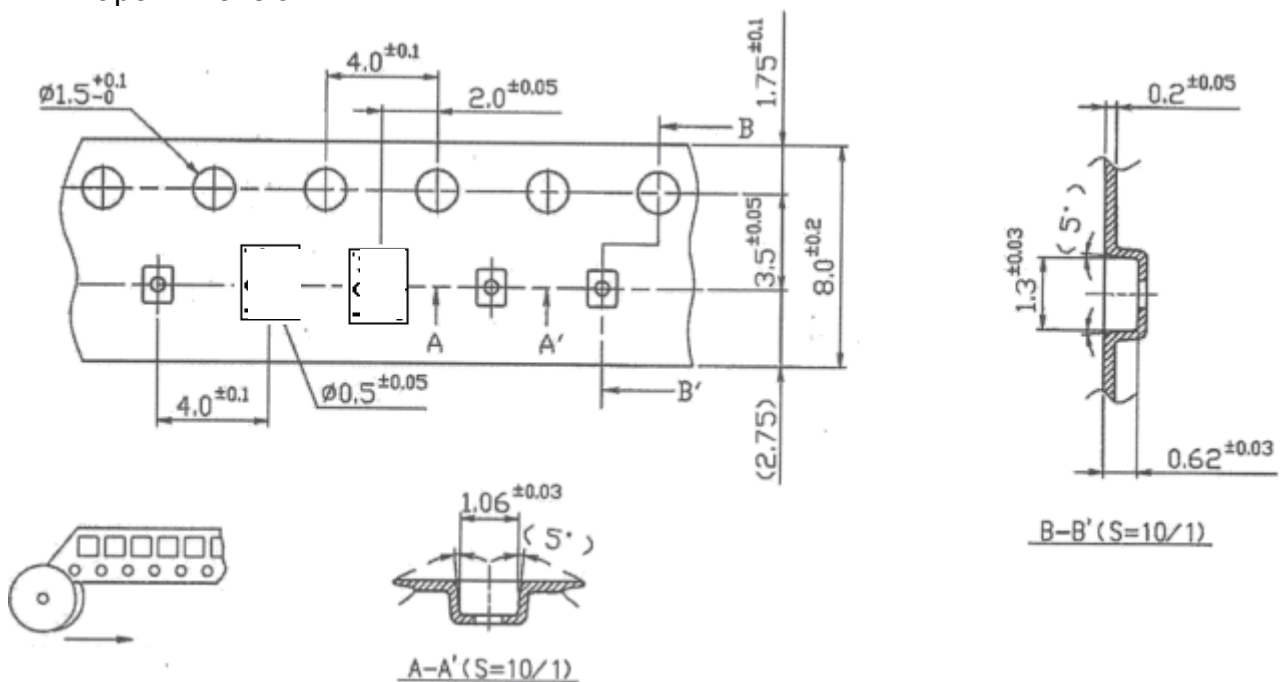
Model: TA1839C
Rev No: 1

F. PACKING:

1. Reel Dimension



2. Tape Dimension



SAW Filter 942.50MHz
Part No: MP07847

Model: TA1839C
Rev No: 1

G. RECOMMENDED REFLOW PROFILE:

1. Preheating shall be fixed at 150 ~ 180°C for 60 ~ 90 seconds.
2. Ascending time to preheating temperature 150°C shall be 30 seconds min.
3. Heating shall be fixed at 220°C for 50 ~ 80 seconds and at 260°C +0/-5°C peak (20 ~ 40 sec).
4. Time: 2 times.

