

SAW Filter 1575.420MHz
Part No: MP07604

Model: TA1653A
Rev No: 2

A. MAXIMUM RATING:

Electrostatic Sensitive Device (ESD)

1. Input Power Level: 10dBm
2. DC Voltage: 3V
3. Operating Temperature: -30°C to +85°C
4. Storage Temperature: -40°C to +95°C

B. ELECTRICAL CHARACTERISTICS:

Item	Unit	Min.	Typ.	Max.	Note
Center Frequency Fc	MHz	-	1575.42	-	-
Insertion Loss within 1574.42 ~ 1576.42MHz	dB	-	0.75	1.2	-
Amplitude ripple within 1574.42 ~ 1576.42MHz	dB	-	0.02	0.5	-
Attenuation					
D.C ~ 824.0MHz	dB	32	35	-	-
824.0 ~ 849.0MHz	dB	32	35	-	-
849.0 ~ 960.0MHz	dB	32	35	-	-
1495.0 ~ 1515.0MHz	dB	30	32	-	-
1635.0 ~ 1655.0MHz	dB	40	44	-	
1710.0 ~ 1750.0MHz	dB	40	43	-	
1750.0 ~ 1780.0MHz	dB	40	43	-	
1780.0 ~ 1785.0MHz	dB	40	43	-	
1850.0 ~ 1910.0MHz	dB	35	40	-	
1920.0 ~ 1980.0MHz	dB	35	38	-	
2400.0 ~ 2480.0MHz	dB	30	32	-	
2480.0 ~ 2500.0MHz	dB	30	32	-	
2500.0 ~ 2700.0MHz	dB	25	30	-	
3000.0 ~ 4000.0MHz	dB	20	24	-	
4000.0 ~ 6000.0MHz	dB	18	21	-	
VSWR 1574.42 ~ 1576.42MHz	-	-	1.4	1.8	

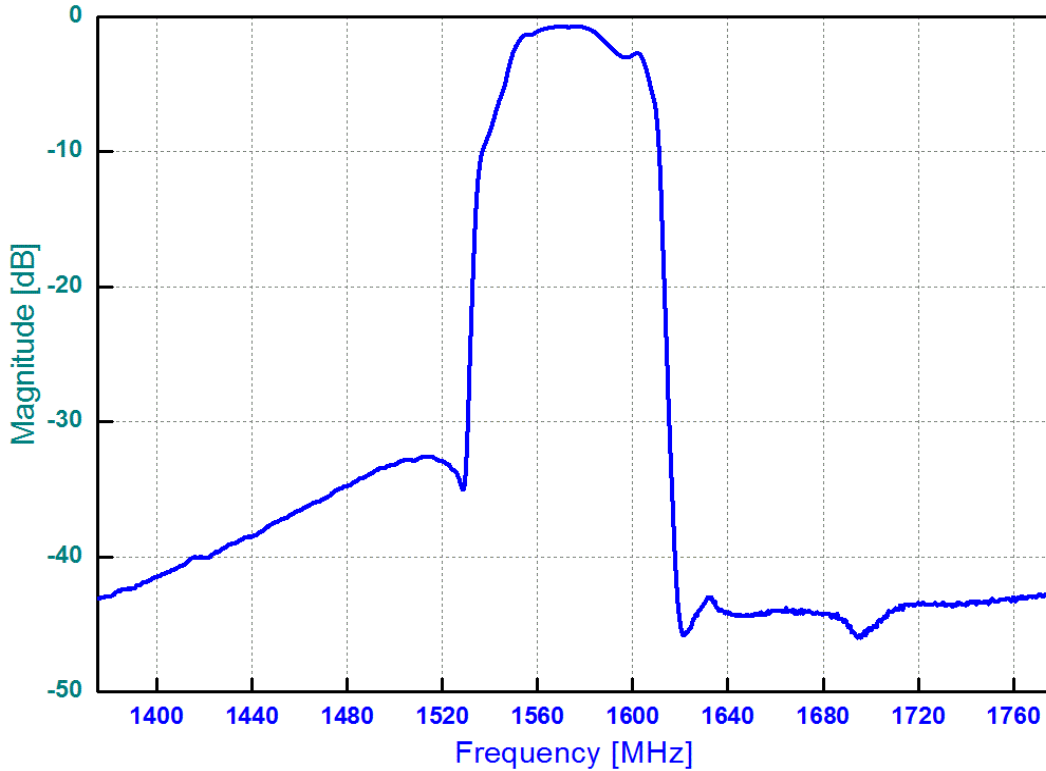
Note: No Matching Network (Ref. Testing Environment Circuit as shown below).

SAW Filter 1575.420MHz
Part No: MP07604

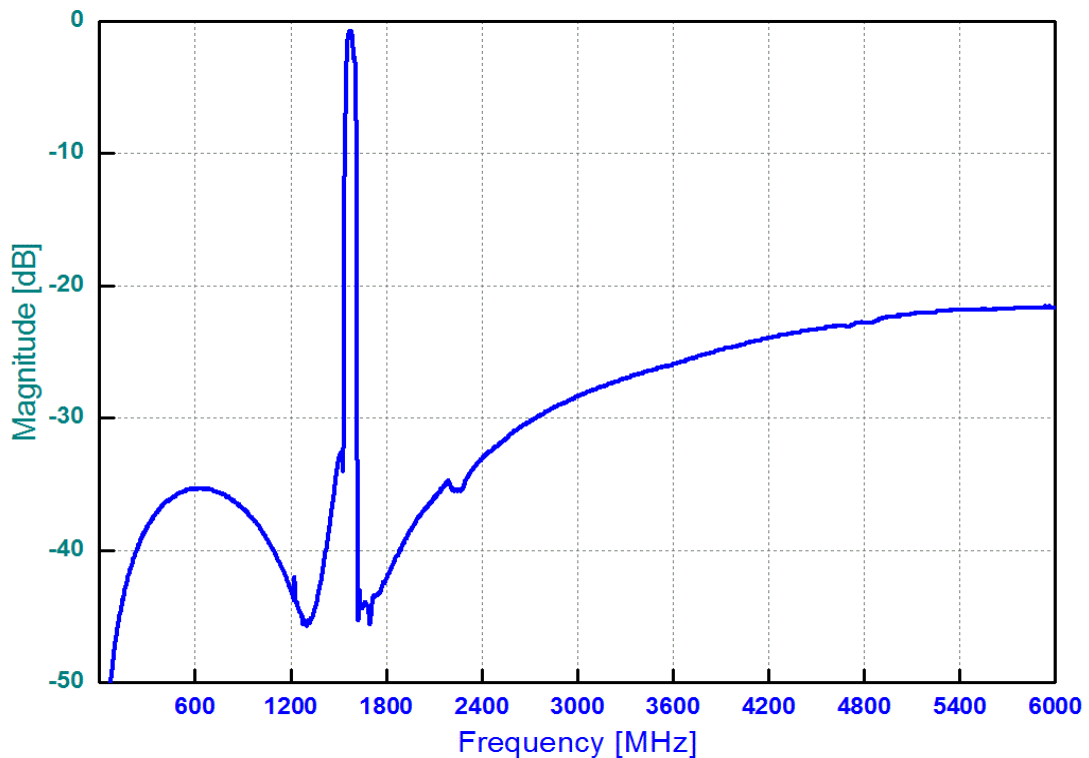
Model: TA1653A
Rev No: 2

C. FREQUENCY CHARACTERISTICS:

1. S21 response



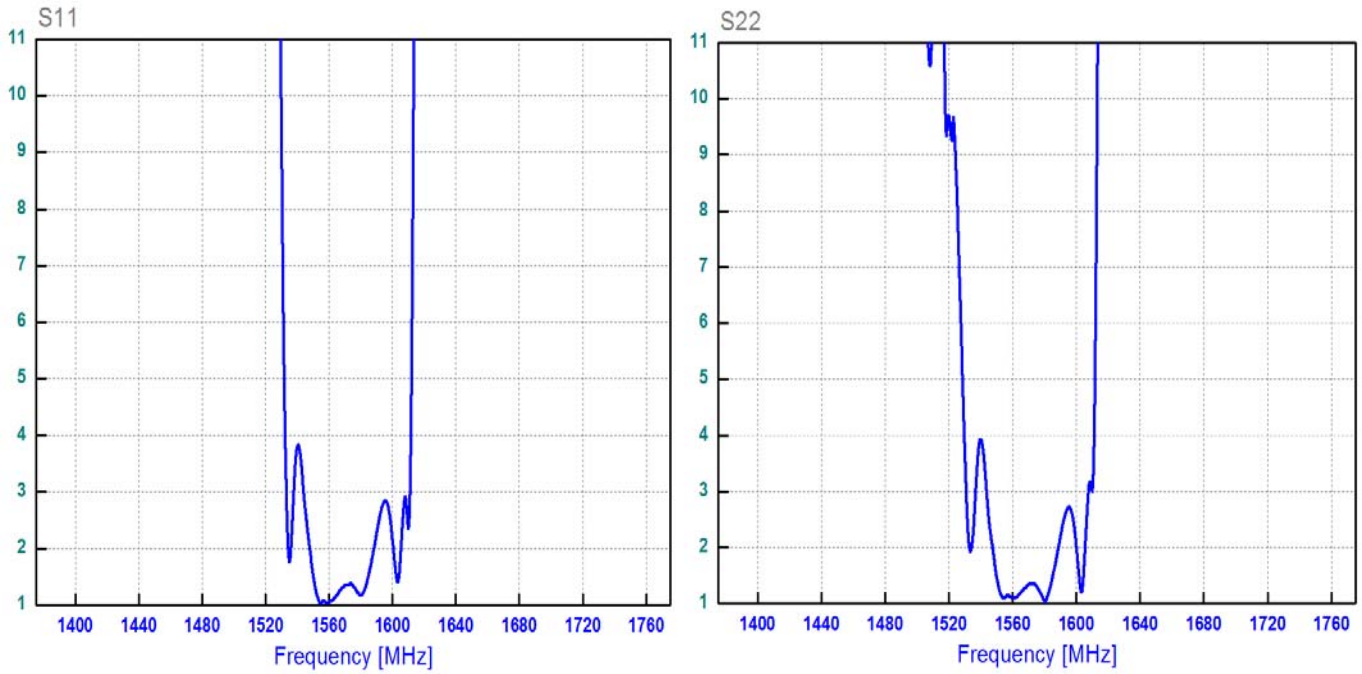
2. S21 response (span 3GHz)



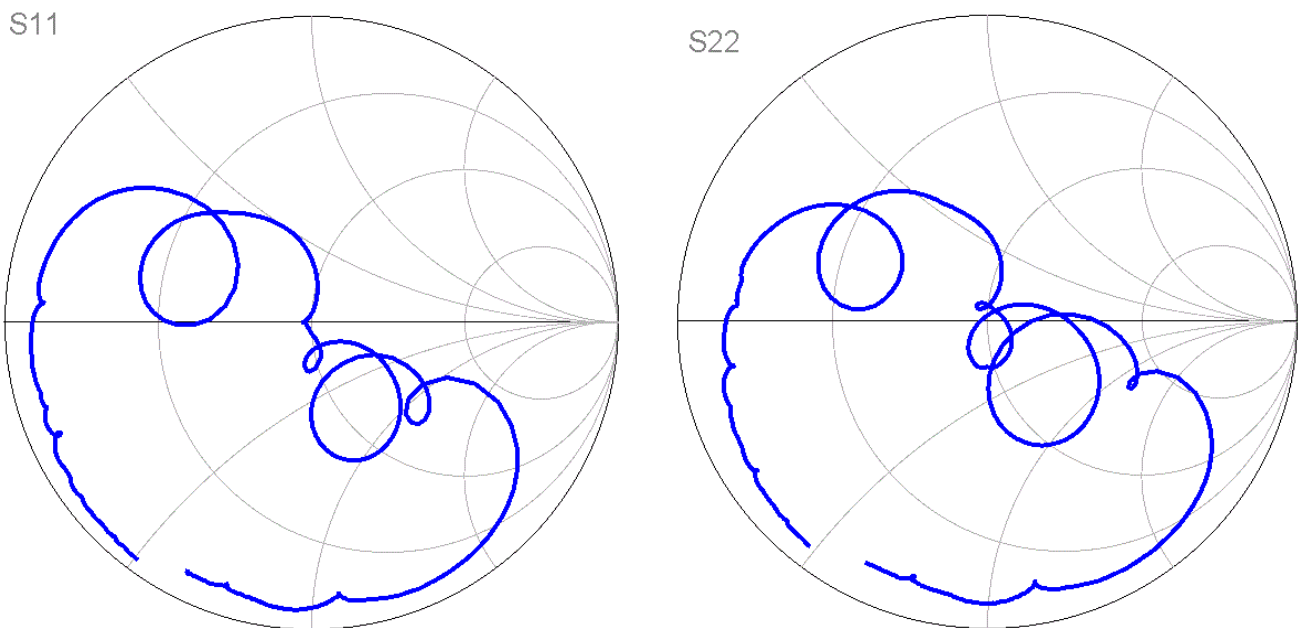
SAW Filter 1575.420MHz
Part No: MP07604

Model: TA1653A
Rev No: 2

3. S11 & S22 VSWR



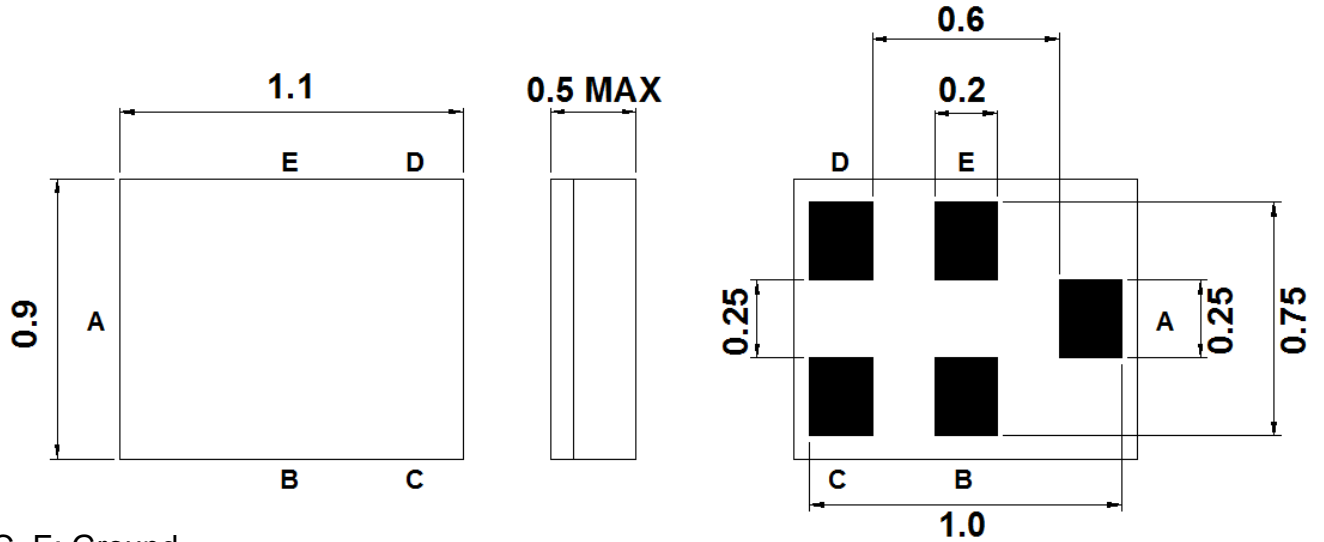
4. Smith Chart



SAW Filter 1575.420MHz
Part No: MP07604

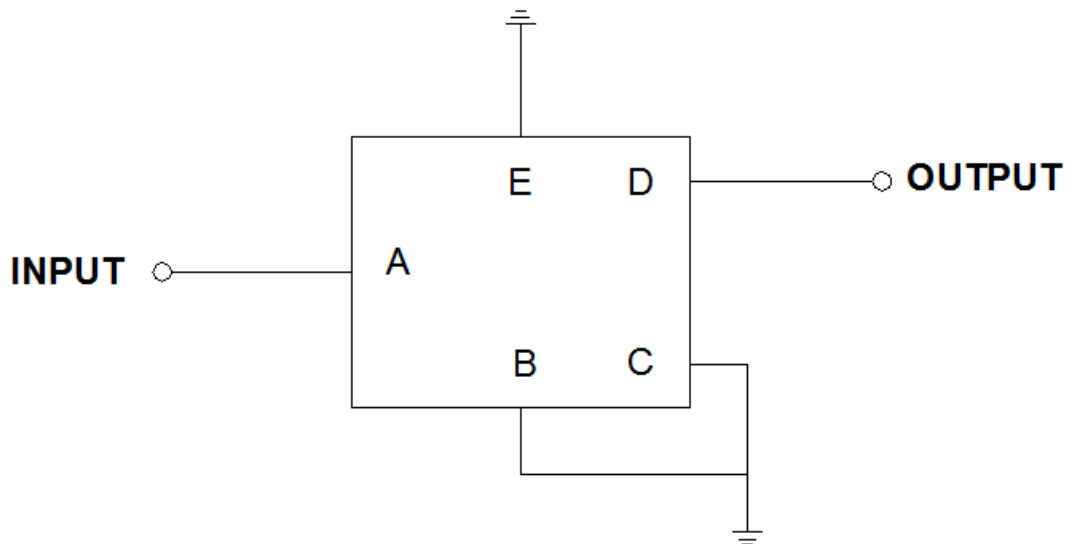
Model: TA1653A
Rev No: 2

D. OUTLINE DRAWING:



B, C, E: Ground
A: Input
D: Output

E. MEASUREMENT CIRCUIT:

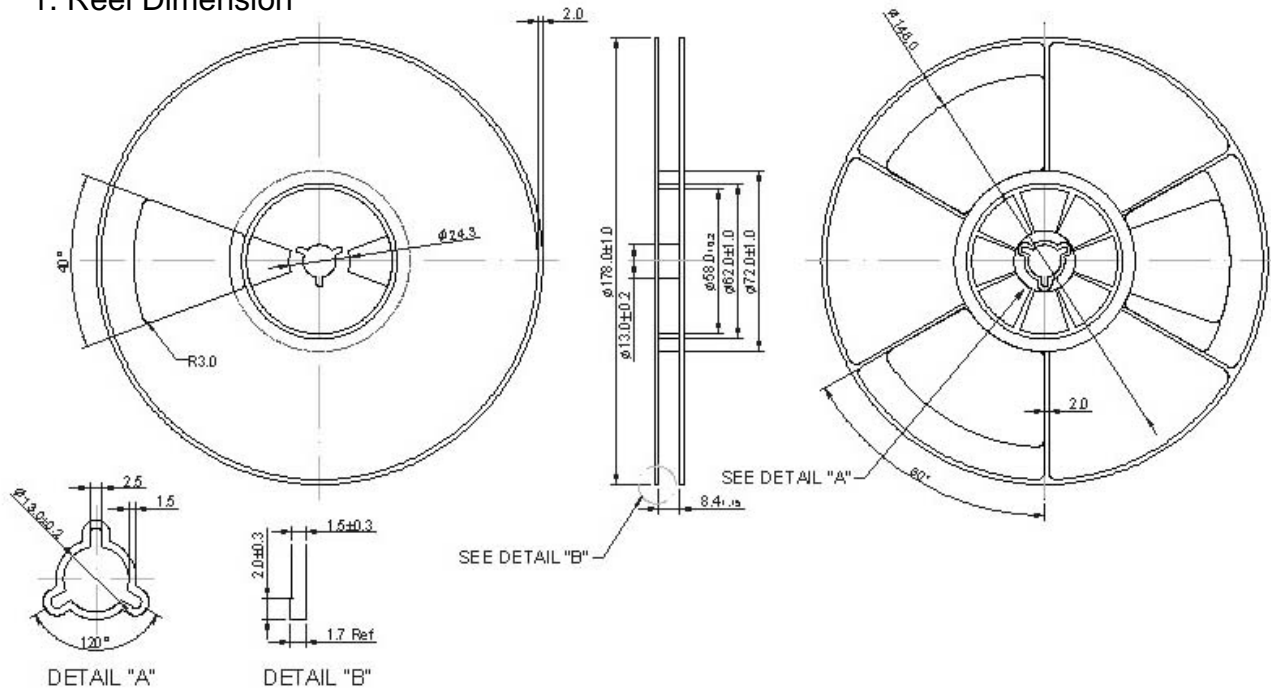


SAW Filter 1575.420MHz
Part No: MP07604

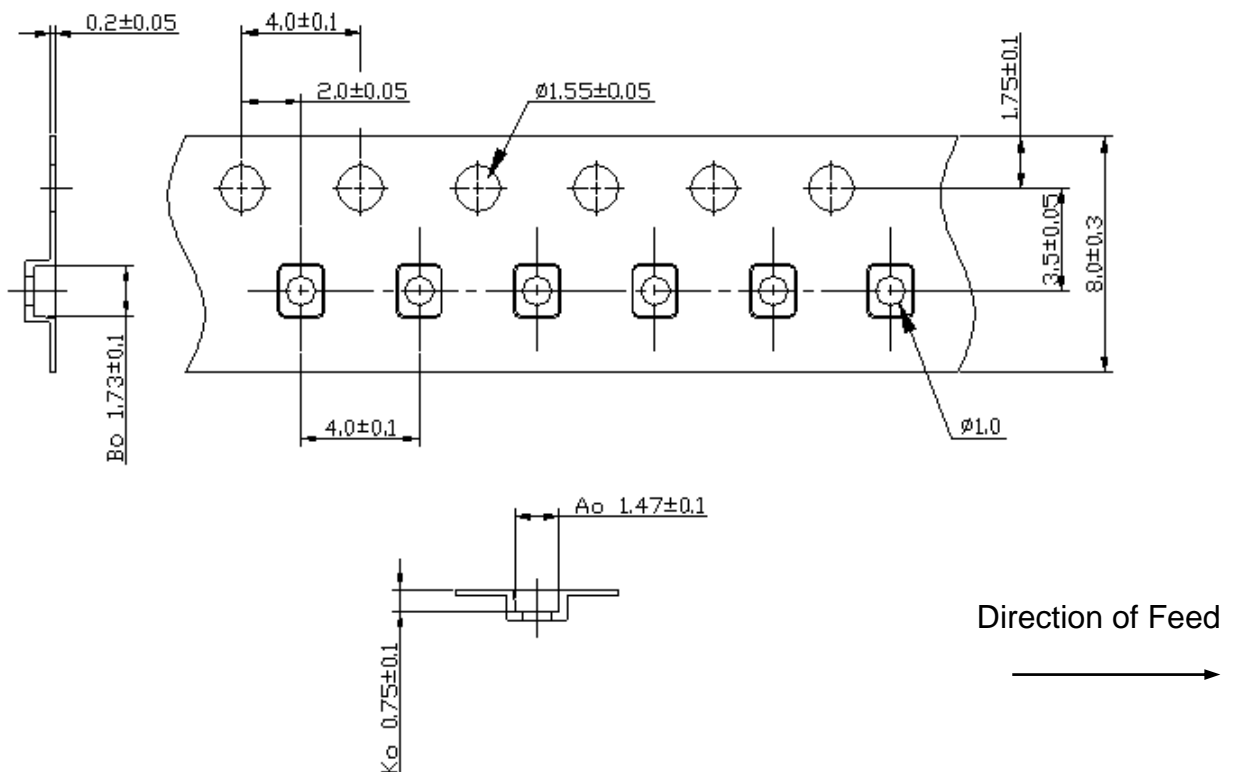
Model: TA1653A
Rev No: 2

F. PACKING:

1. Reel Dimension



2. Tape Dimension



SAW Filter 1575.420MHz
Part No: MP07604

Model: TA1653A
Rev No: 2

G. RECOMMENDED REFLOW PROFILE:

