

SAW Filter 427.50MHz

Model: TA1635A

Part No: MP07253

Rev No: 1

A. MAXIMUM RATING:

Electrostatic Sensitive Device (ESD)

1. Input Power Level: 10dBm
2. DC Voltage: 3V
3. Operating Temperature: -40°C to +85°C
4. Storage Temperature: -40°C to +85°C

B. ELECTRICAL CHARACTERISTICS:

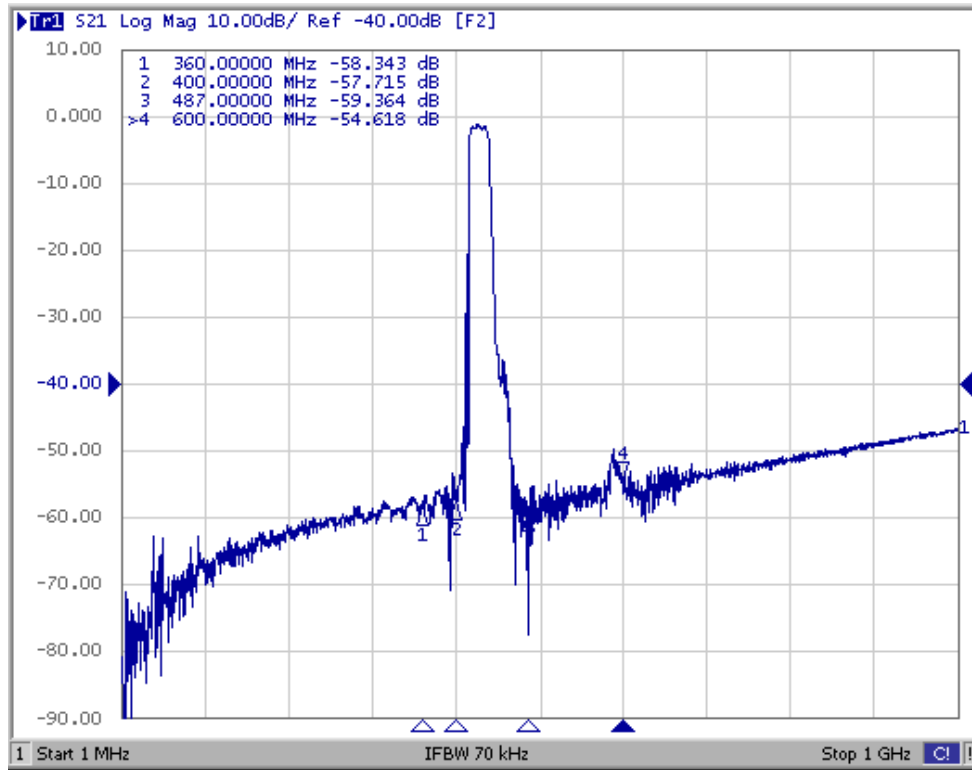
| Item | Unit | Min. | Typ. | Max. |
|----------------------------------|------|------|-------|------|
| Center frequency Fc MHz | | - | 427.5 | - |
| 1dB Bandwidth MHz | dB | - | 19.5 | - |
| 3dB Bandwidth MHz | dB | 20 | 23.6 | - |
| Insertion loss 420 ~ 435MHz | dB | - | 1.5 | 3.0 |
| Attenuation (reference from 0dB) | | | | |
| 10 ~ 360MHz | dB | 50 | 56 | - |
| 360 ~ 400MHz | dB | 47 | 53 | - |
| 487 ~ 600MHz | dB | 47 | 51 | - |
| 600 ~ 1000MHz | dB | 43 | 48 | - |
| Source impedance Z _S | Ω | - | 50 | - |
| Load impedance Z _L | Ω | - | 50 | - |

SAW Filter 427.50MHz
Part No: MP07253

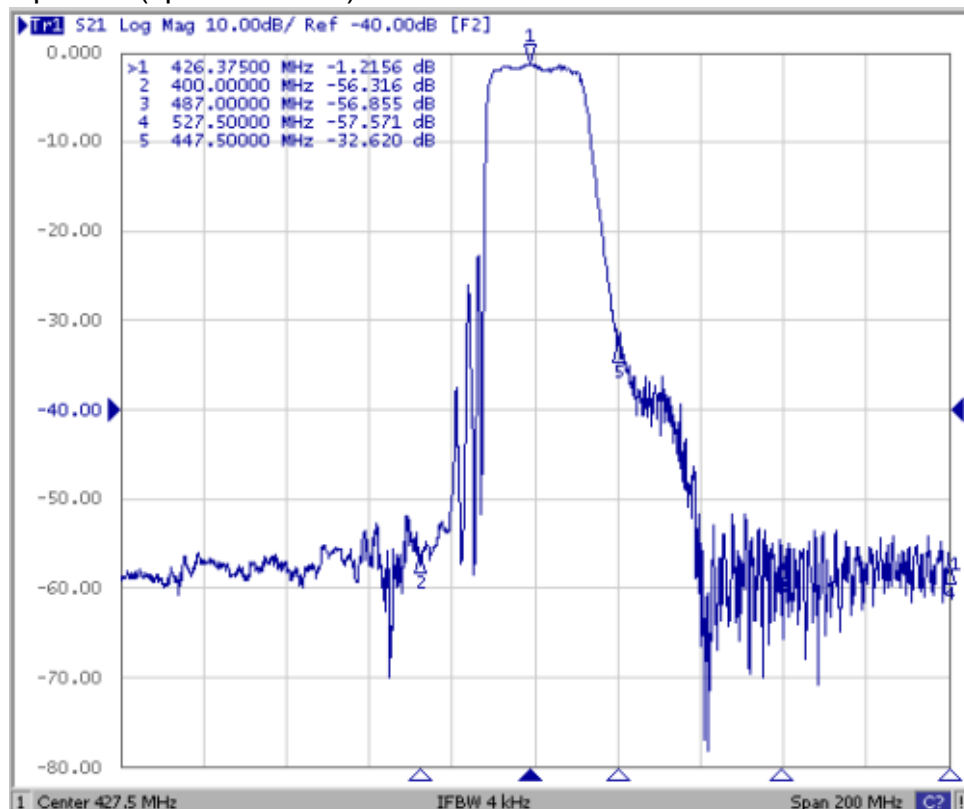
Model: TA1635A
Rev No: 1

C. FREQUENCY CHARACTERISTICS:

1. Wideband response: (span 1GHz)



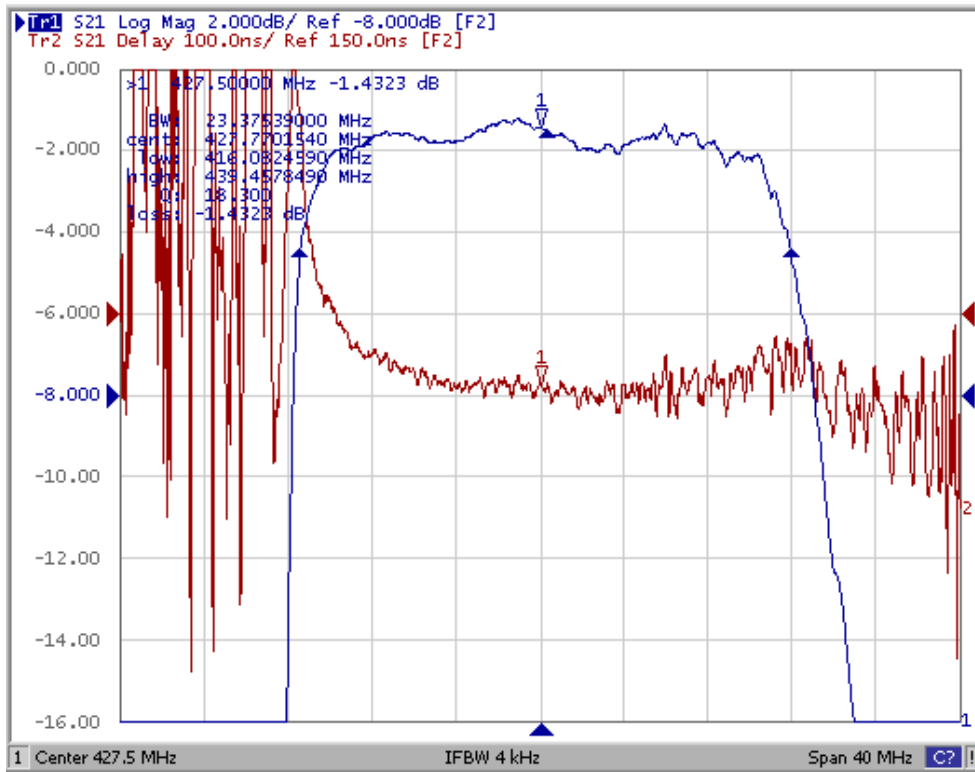
2. S21 response: (span 200MHz)



SAW Filter 427.50MHz
Part No: MP07253

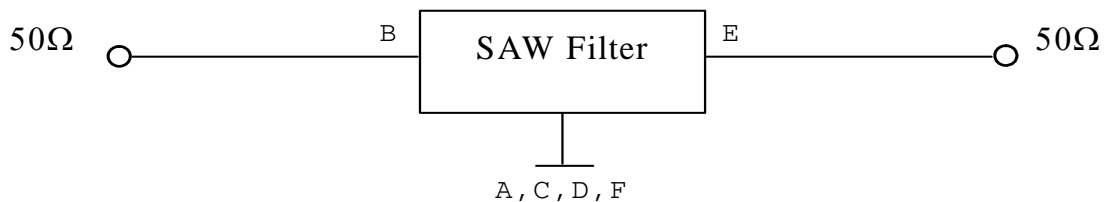
Model: TA1635A
Rev No: 1

3. Passband response: (span 40MHz)



D. MEASUREMENT CIRCUIT:

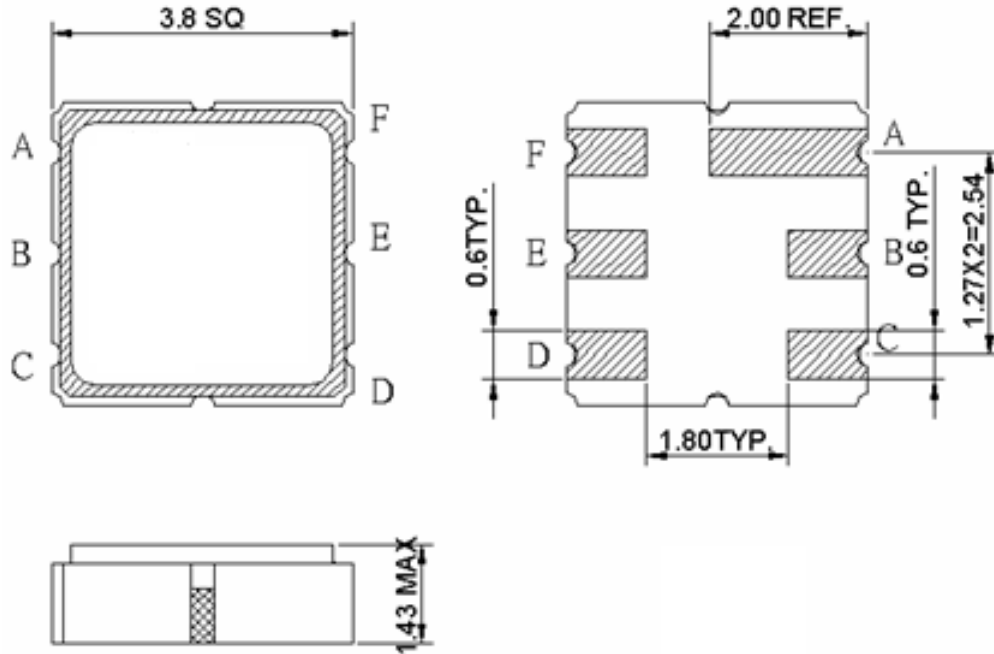
HP Network analyzer



SAW Filter 427.50MHz
Part No: MP07253

Model: TA1635A
Rev No: 1

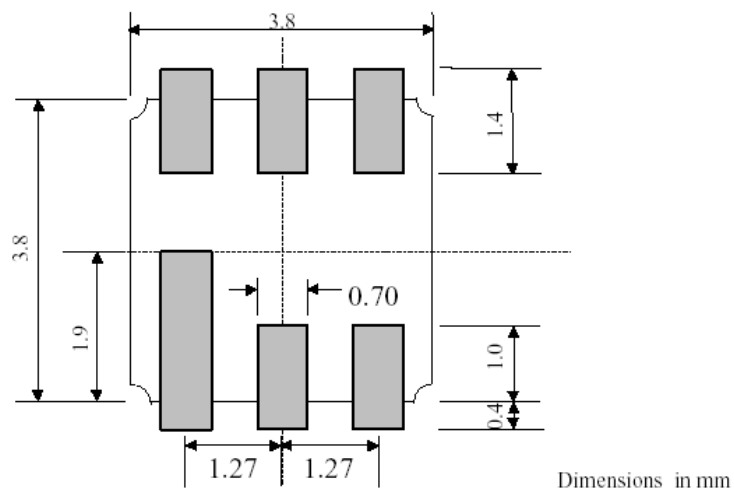
E. OUTLINE DRAWING:



B : Input
 E: Output
 A,C,D,F Ground

Unit: mm

F. PCB FOOTPRINT:

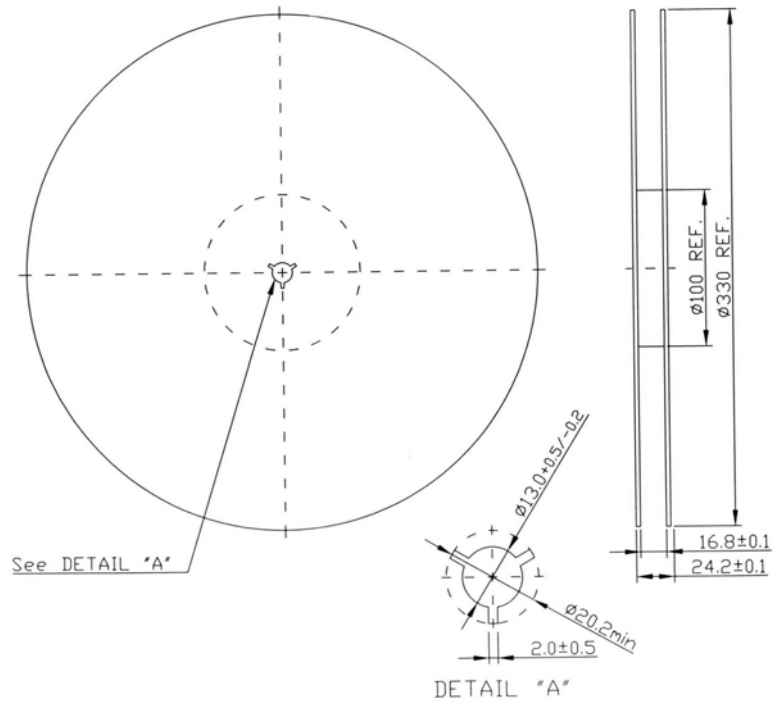


SAW Filter 427.50MHz
Part No: MP07253

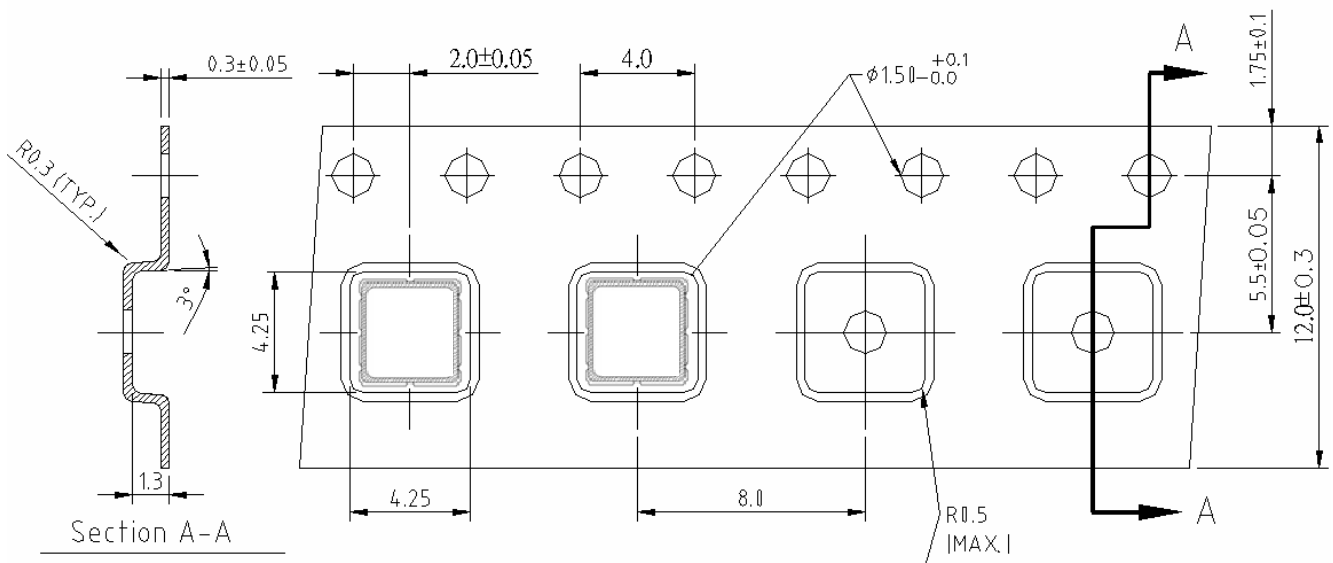
Model: TA1635A
Rev No: 1

G. PACKING:

1. Reel Dimension (Please refer to FR-75D10 for packing quantity)



2. Tape Dimension



SAW Filter 427.50MHz
Part No: MP07253

Model: TA1635A
Rev No: 1

H. RECOMMENDED REFLOW PROFILE:

