

SAW Filter 2040.0MHz

Model: TA1279A

Part No: MP06063

Rev No: 1

A. MAXIMUM RATING:

Electrostatic Sensitive Device (ESD)

1. Input Power Level: 10dBm
2. DC Voltage: 3V
3. Operating Temperature: -40°C to +85°C
4. Storage Temperature: -50°C to +95°C

B. ELECTRICAL CHARACTERISTICS:

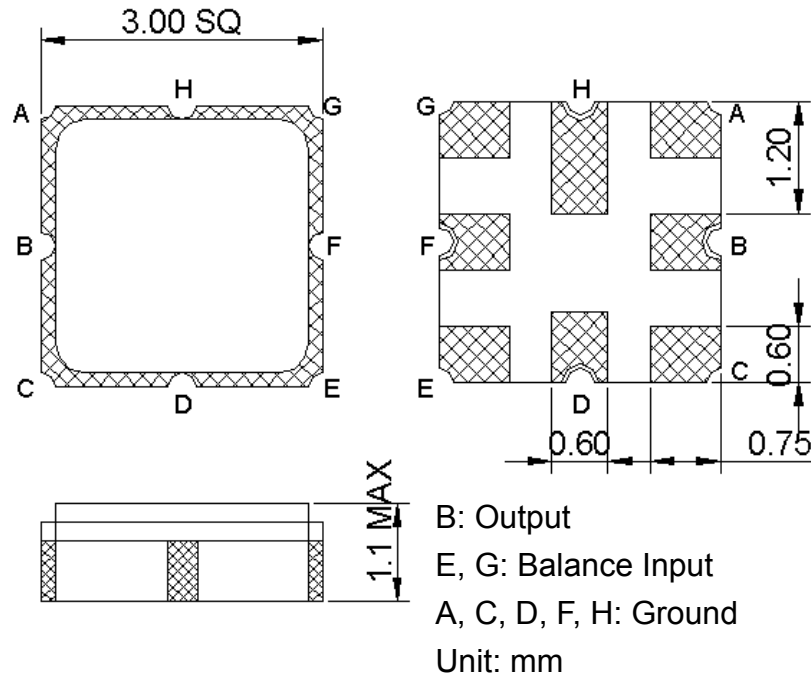
1. Terminating source impedance (balanced): $Z_S = 150\Omega // 12nH$
2. Terminating load impedance (single ended): $Z_L = 75\Omega$

Item	Unit	Min.	Typ.	Max.	Note
Center Frequency Fc	MHz	-	2040	-	-
Bandwidth at -2dB	MHz	60	76	-	-
Insertion Loss in 2010 ~ 2070MHz	dB	-	3.45	5	-
Amplitude ripple (2010 ~ 2070MHz)	dB	-	0.6	2	-
I/O VSWR (2010 ~ 2070MHz)		-	2.1	2.5	-
CMDR (2010 MHz ~ 2070MHz)	dB	22	25	-	-
Attenuation (reference level from 0dB)					
50 ~ 1925MHz	dB	40	57	-	-
2190 ~ 3000MHz	dB	40	56	-	-
3000 ~ 4000MHz	dB	30	54	-	-
4000 ~ 6000MHz	dB	15	35	-	-
Temperature Coefficient of Frequency	ppm/°C	-	-36	-	-

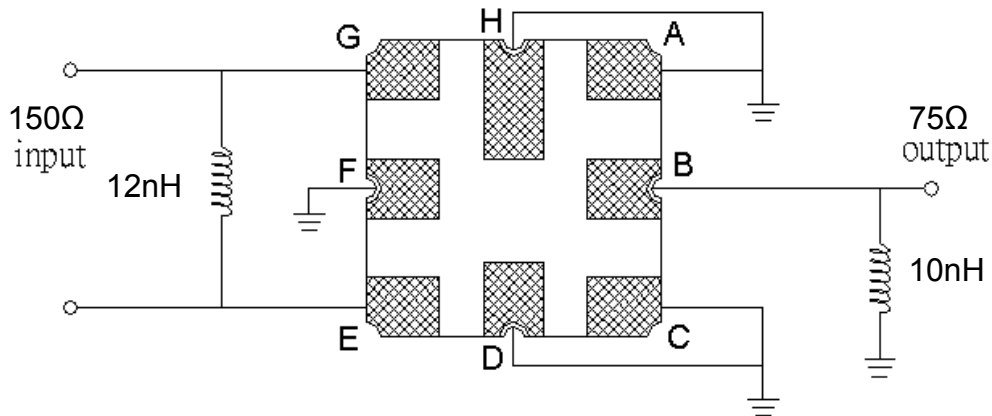
SAW Filter 2040.0MHz
Part No: MP06063

Model: TA1279A
Rev No: 1

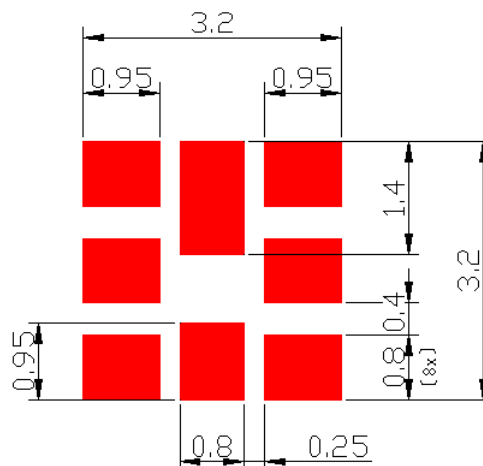
C. OUTLINE DRAWING:



D. MEASUREMENT CIRCUIT:



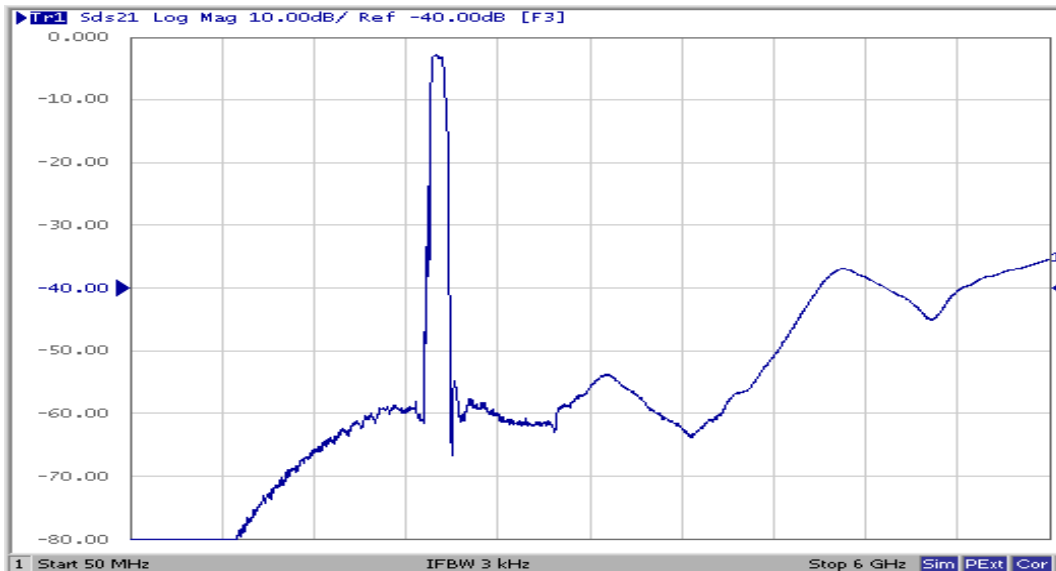
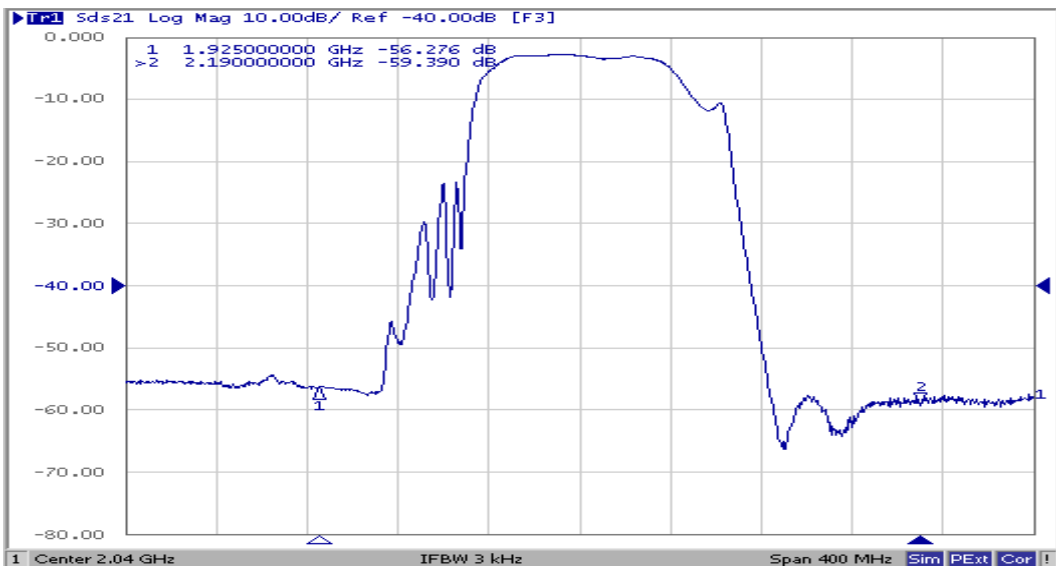
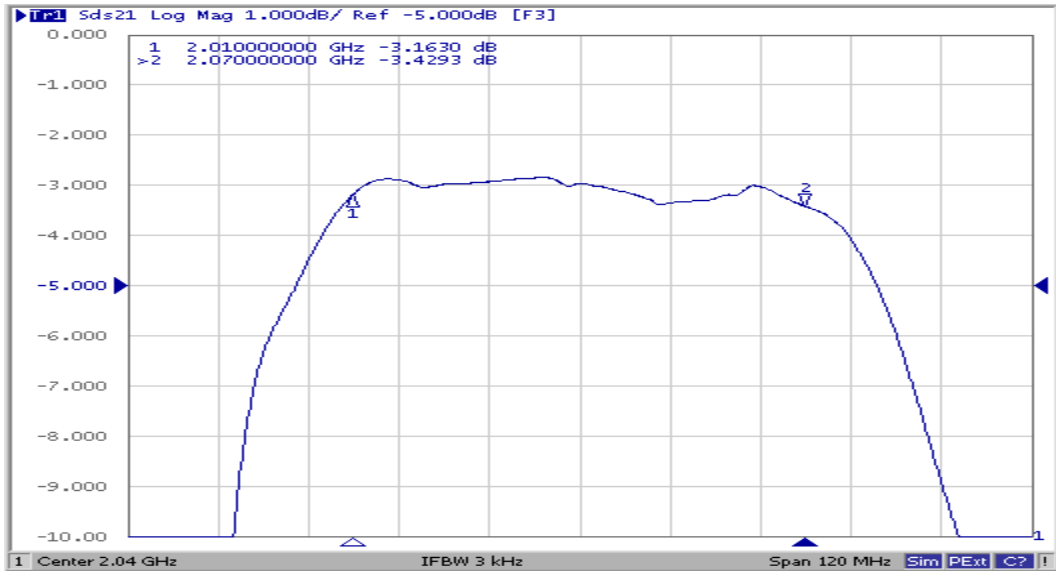
E. PCB FOOTPRINT:



SAW Filter 2040.0MHz
Part No: MP06063

Model: TA1279A
Rev No: 1

F. FREQUENCY CHARACTERISTICS:

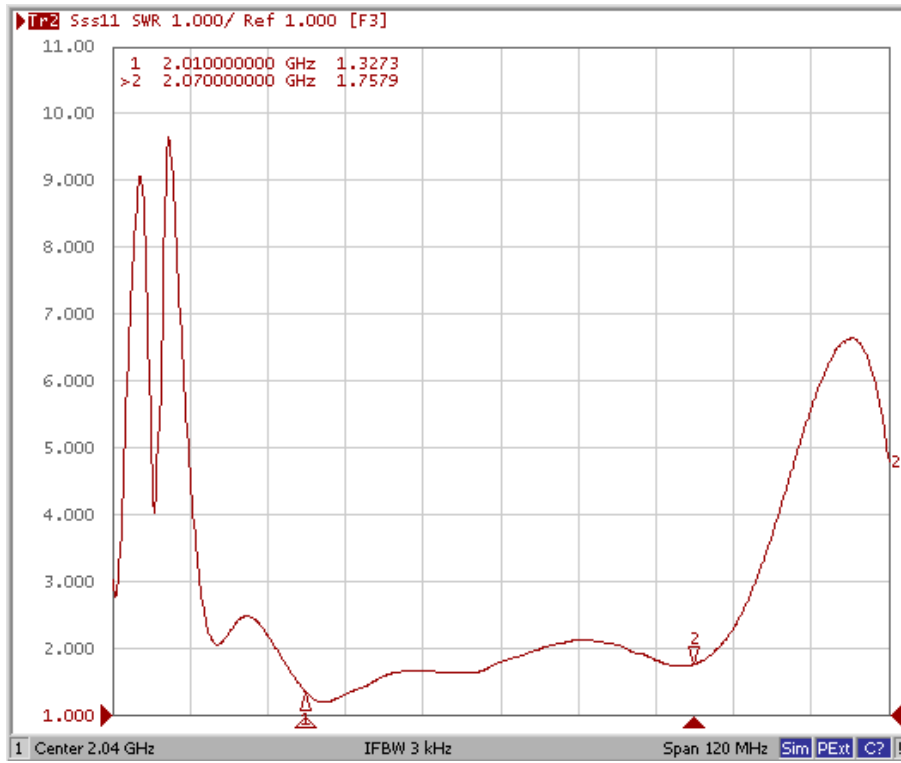


SAW Filter 2040.0MHz
Part No: MP06063

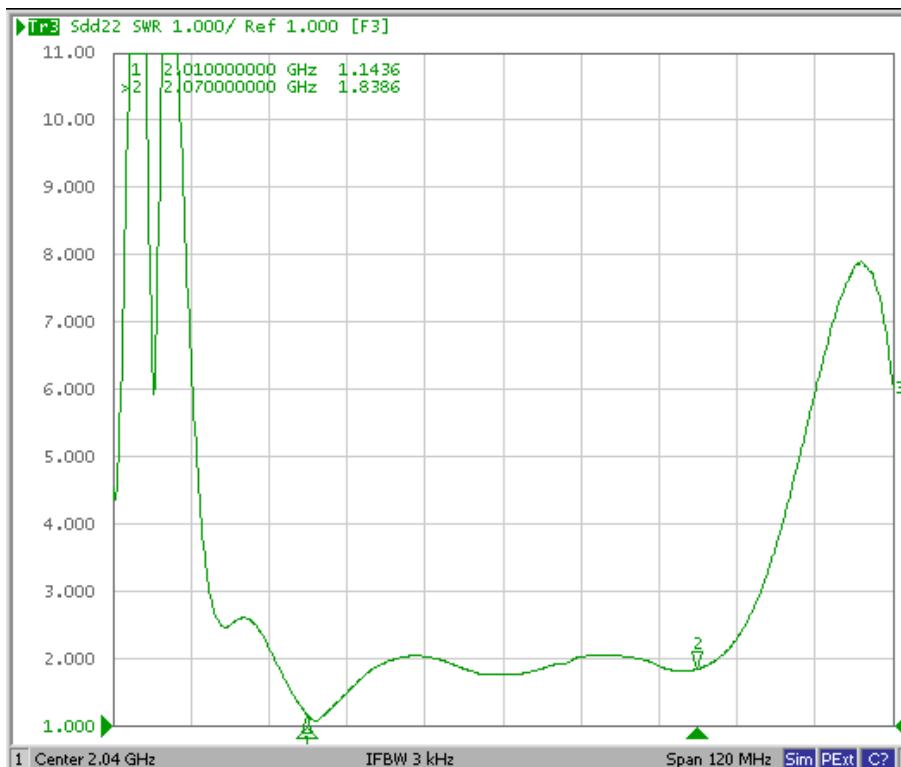
Model: TA1279A
Rev No: 1

Reflection Functions

S11



S22

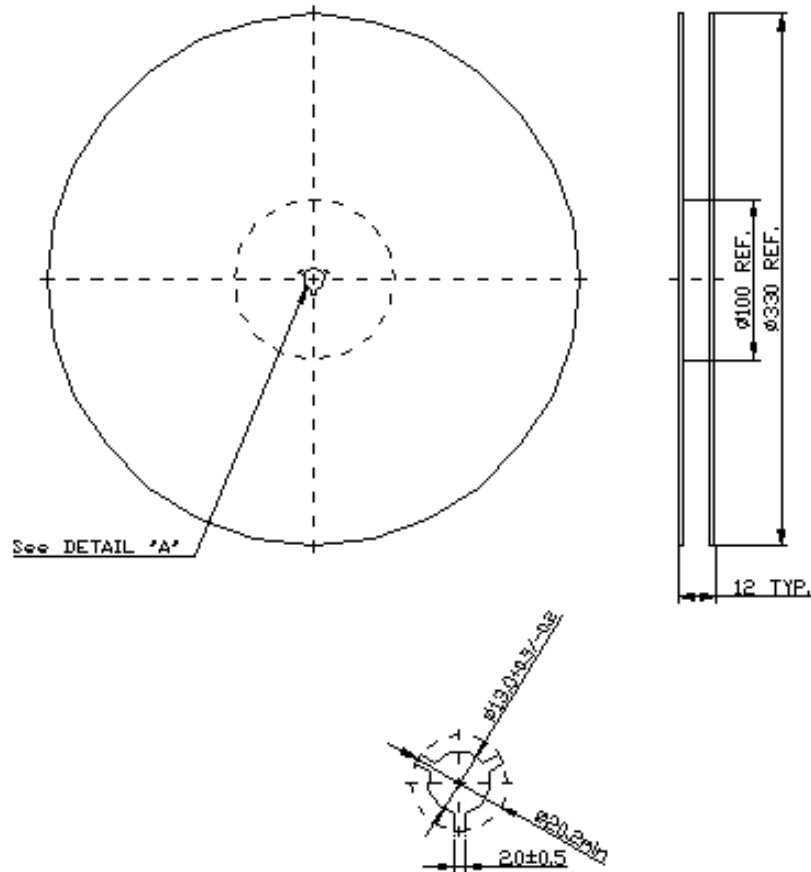


SAW Filter 2040.0MHz
Part No: MP06063

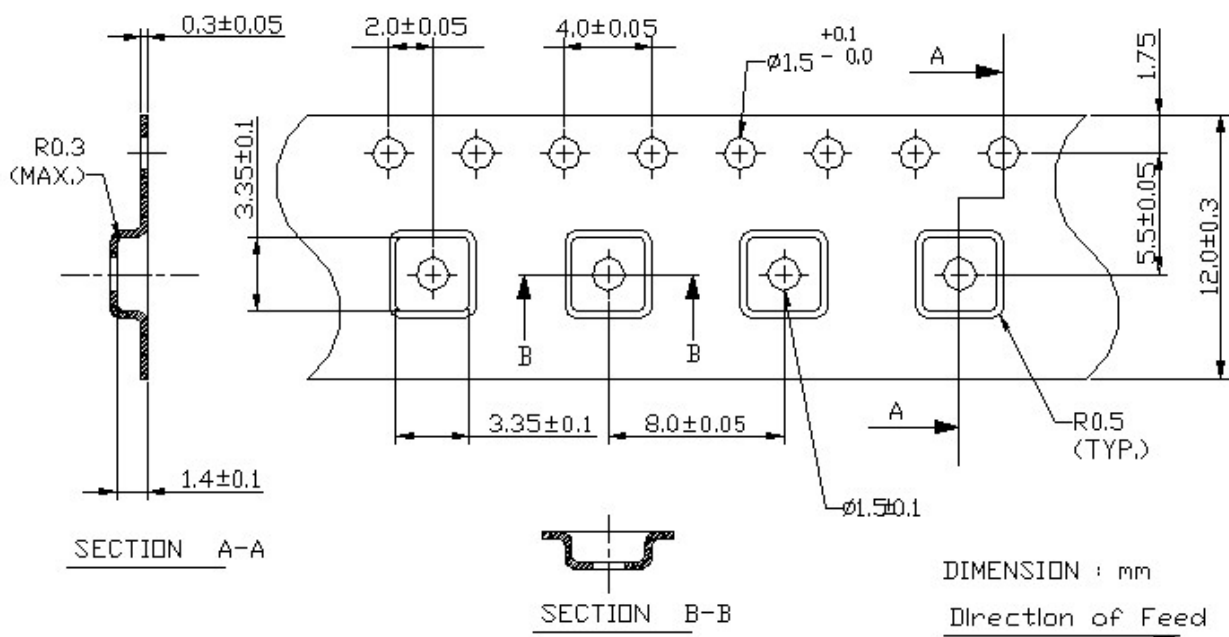
Model: TA1279A
Rev No: 1

G. PACKING:

1. Reel Dimension (Reel Count: 7" = 1000; 13" = 3000)



2. Tape Dimension



SAW Filter 2040.0MHz
Part No: MP06063

Model: TA1279A
Rev No: 1

H. RECOMMENDED REFLOW PROFILE:

1. Preheating shall be fixed at 150 ~ 180°C for 60 ~ 90 seconds.
2. Ascending time to preheating temperature 150°C shall be 30 seconds min.
3. Heating shall be fixed at 220°C for 50 ~ 80 seconds and at 245 ~ 260°C peak (min. 10sec).
4. Time: 2 times.

