

SAW Filter 1745.0MHz

Model: TA1611A

Part No: MP05712

Rev No: 1

A. MAXIMUM RATING:

Electrostatic Sensitive Device (ESD)

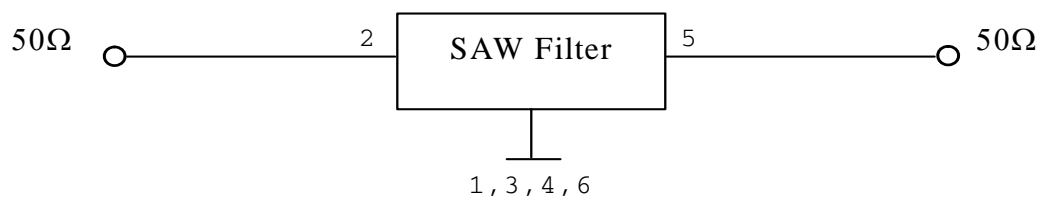
1. Input Power Level: 10dBm
2. DC Voltage: 3V
3. Operating Temperature: -40°C to +85°C
4. Storage Temperature: -40°C to +85°C

B. ELECTRICAL CHARACTERISTICS:

Item	Unit	Min.	Typ.	Max.
Center Frequency Fc	MHz	-	1745	-
Insertion loss (1735 ~ 1755MHz) IL	dB	-	1.7	3.0
Amplitude ripple (1735 ~ 1755MHz)	dB	-	0.3	1.8
VSWR (1735 ~ 1755MHz)	-	-	1.4	2.0
Attenuation (Reference level from 0dB)				
10 ~ 1650MHz	dB	28	34	-
1850 ~ 2500MHz	dB	34	39	-
Temperature coefficient of frequency	ppm/k	-	-36	-

C. MEASUREMENT CIRCUIT:

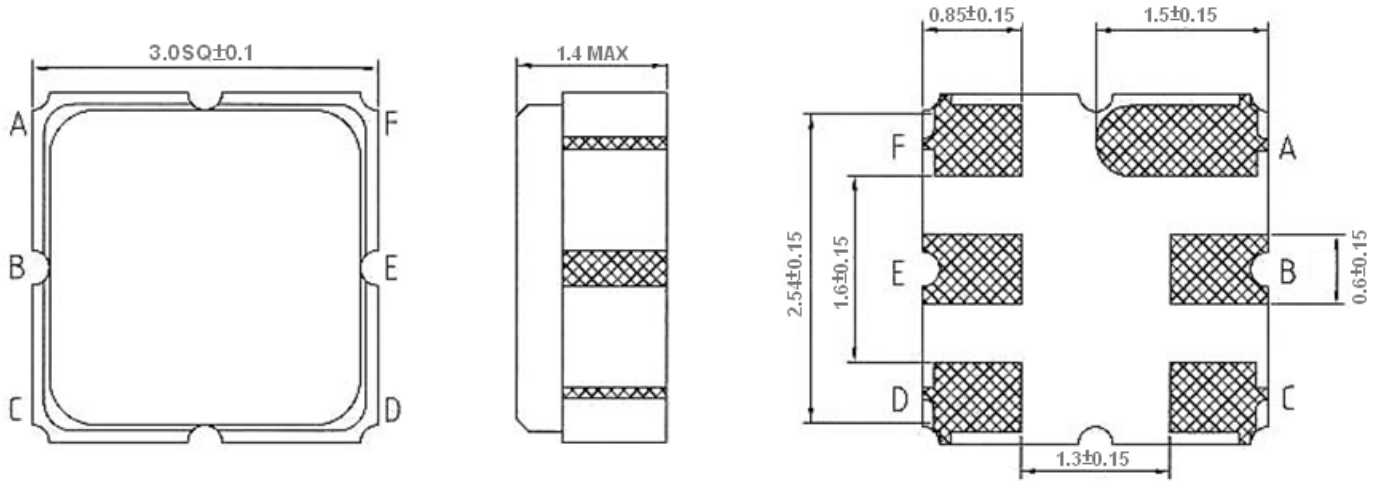
HP Network analyzer



SAW Filter 1745.0MHz
Part No: MP05712

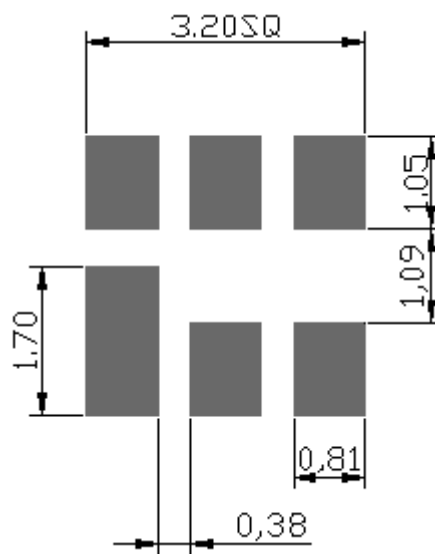
Model: TA1611A
Rev No: 1

D. OUTLINE DRAWING:



B: Input
E: Output
A, C, D, F: Ground
Unit: mm

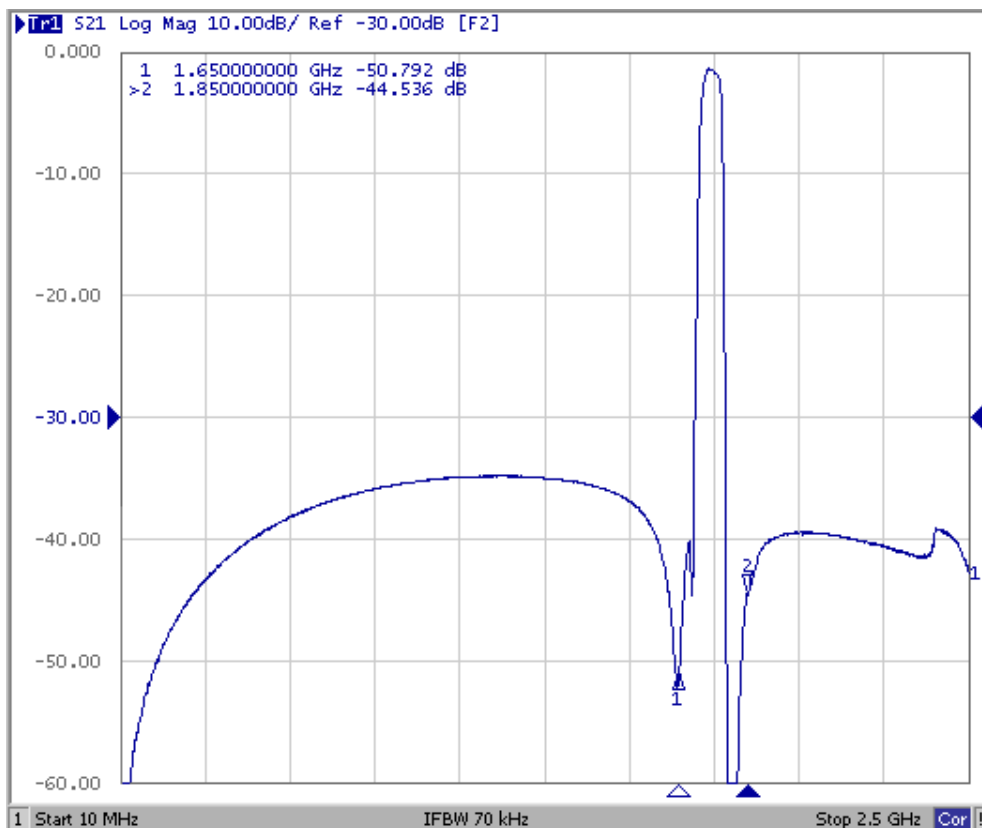
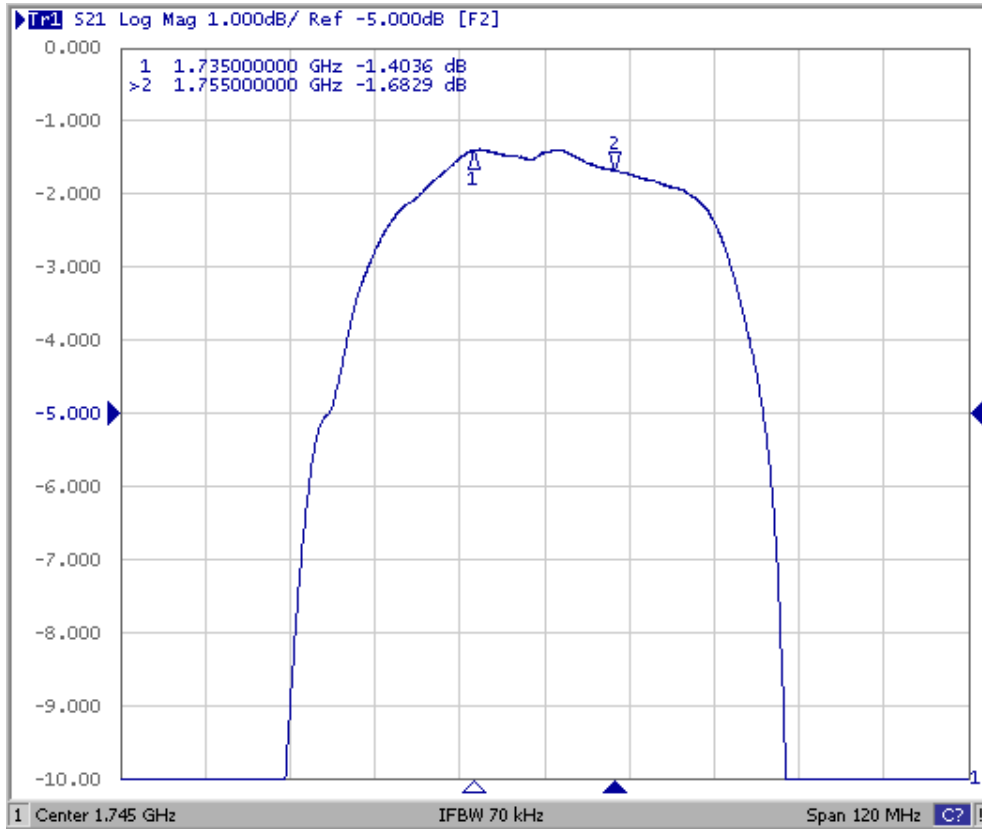
E. PCB FOOTPRINT:



SAW Filter 1745.0MHz
Part No: MP05712

Model: TA1611A
Rev No: 1

F. FREQUENCY CHARACTERISTICS:

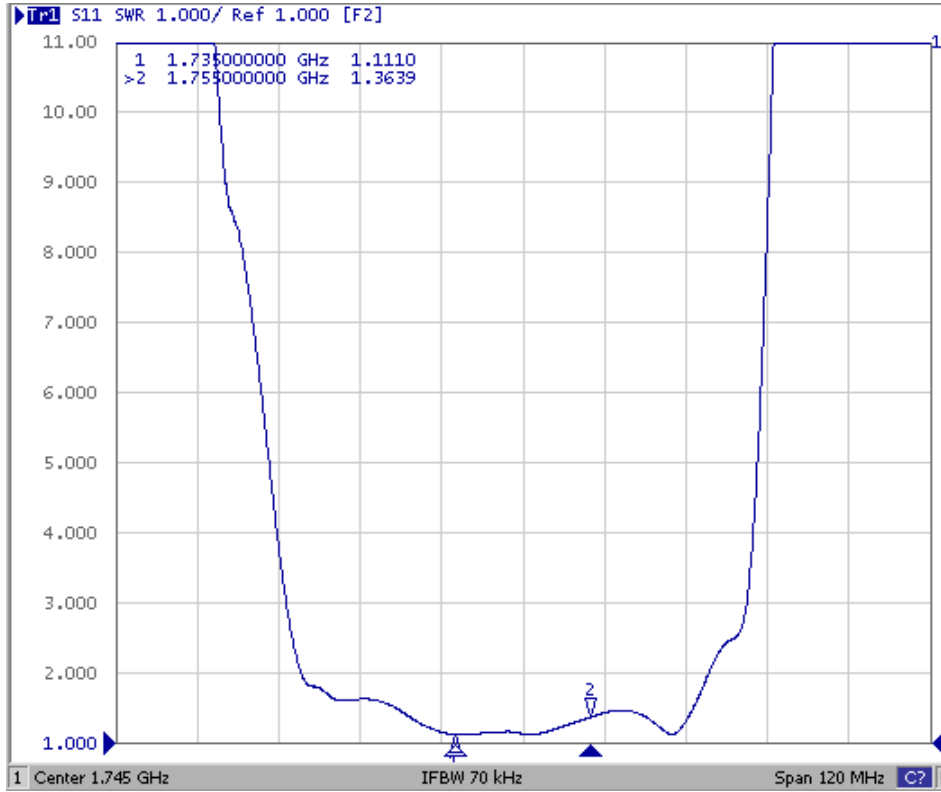


SAW Filter 1745.0MHz
Part No: MP05712

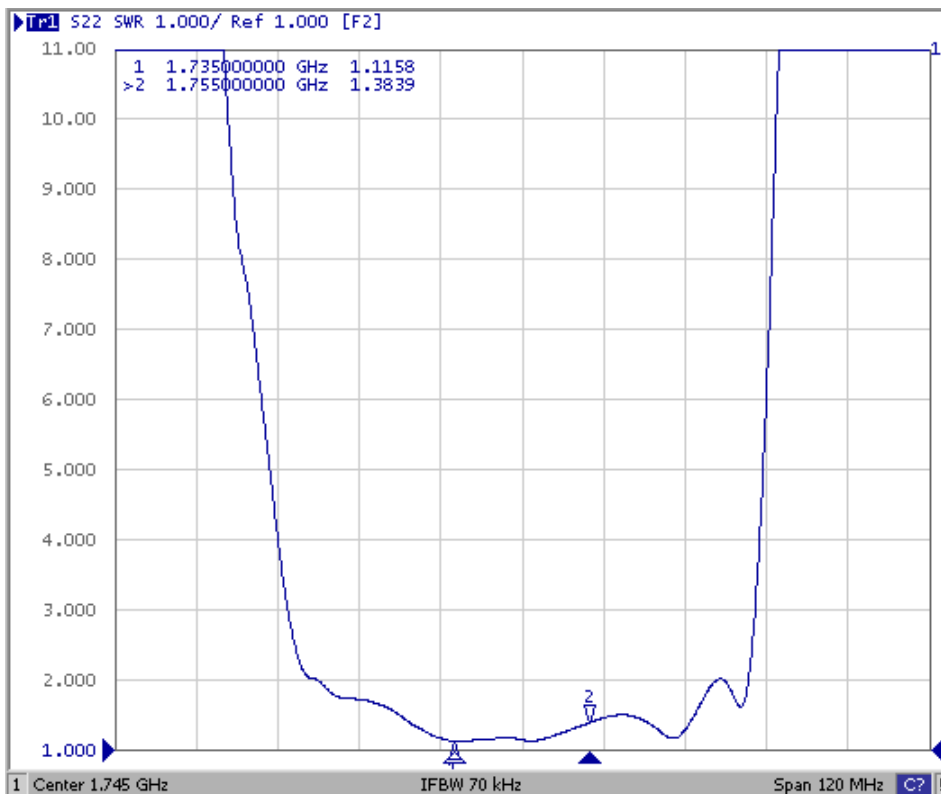
Model: TA1611A
Rev No: 1

Reflection Functions

S11



S22

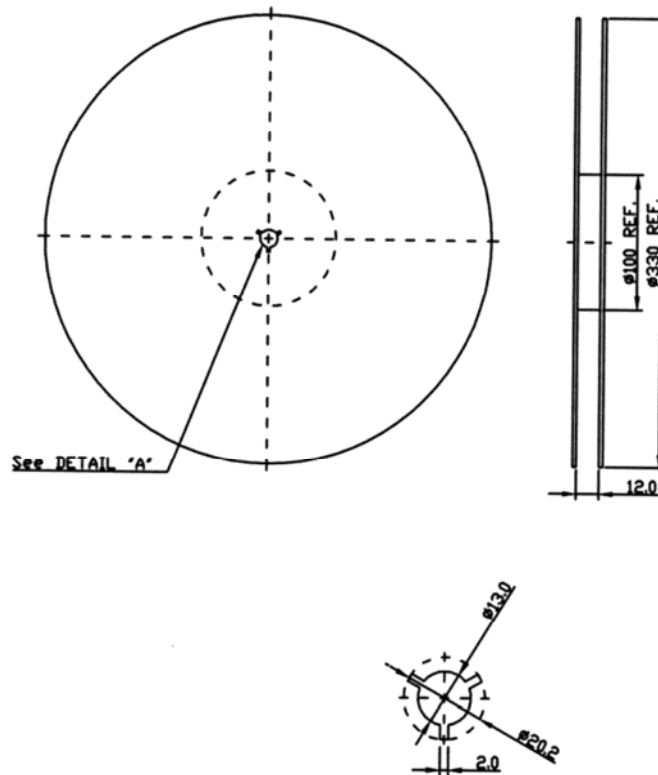


SAW Filter 1745.0MHz
Part No: MP05712

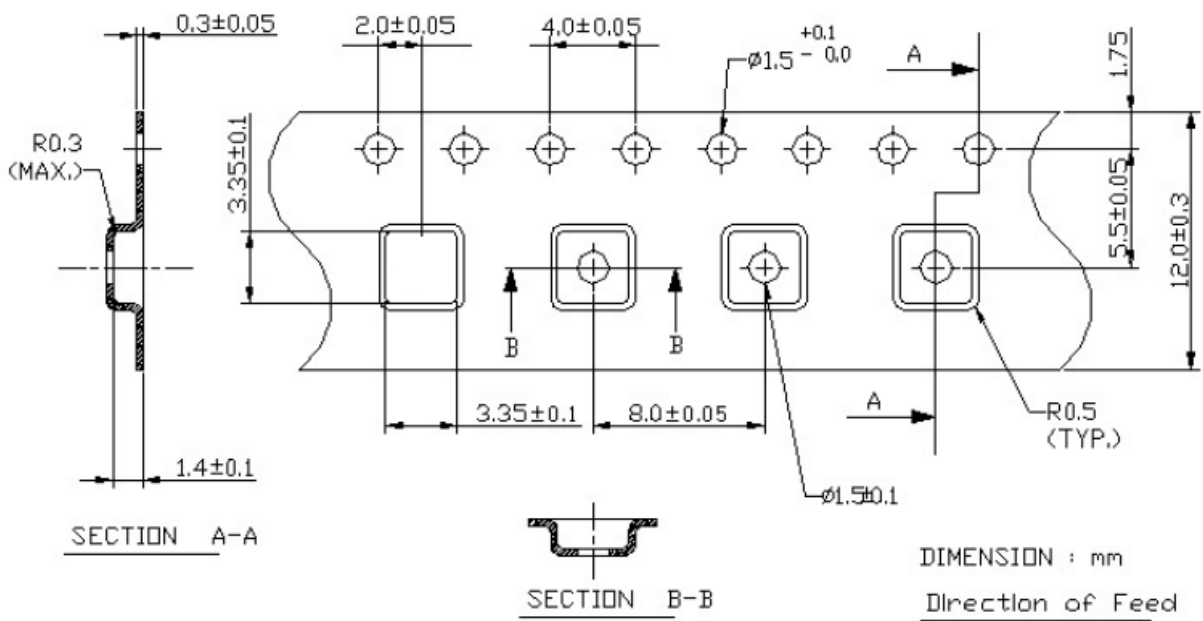
Model: TA1611A
Rev No: 1

G. PACKING:

1. Reel Dimension (Please refer to FR-75D10 for packing quantity)



2. Tape Dimension



SAW Filter 1745.0MHz
Part No: MP05712

Model: TA1611A
Rev No: 1

H. RECOMMENDED REFLOW PROFILE:

