

SAW Filter: 423.750MHz
Part No: MP05384

Model: TA1664A
Rev No: 1

A. MAXIMUM RATING:

Electrostatic Sensitive Device (ESD)

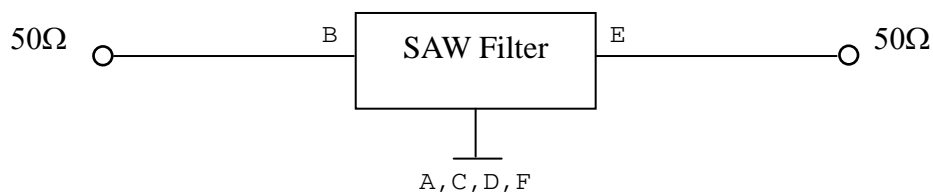
1. Input Power Level: 15dBm
2. DC Voltage: 0V
3. Operating Temperature: -40°C to +85°C
4. Storage Temperature: -40°C to +85°C

B. ELECTRICAL CHARACTERISTICS:

Item	Unit	Min.	Typ.	Max.
Center frequency Fc	MHz	-	423.75	-
Insertion Loss (421.5 ~ 426MHz) IL	dB	-	1.8	3.5
Amplitude Ripple (421.5 ~ 426MHz)	dB	-	0.3	2.2
VSWR (421.5 ~ 426MHz)	-	-	1.4	2.2
Group delay ripple (421.5 ~ 426MHz)	ns	-	60	220
Attenuation (Reference level from 0dB)				
0.3 ~ 410MHz	dB	45	60	-
411.5 ~ 416MHz	dB	15	50	-
450 ~ 480MHz	dB	45	61	-
480 ~ 1000MHz	dB	40	55	-
1000 ~ 2000MHz	dB	35	48	-
Temperature Coefficient of Frequency	ppm/°C	-	-36	-

C. MEASUREMENT CIRCUIT:

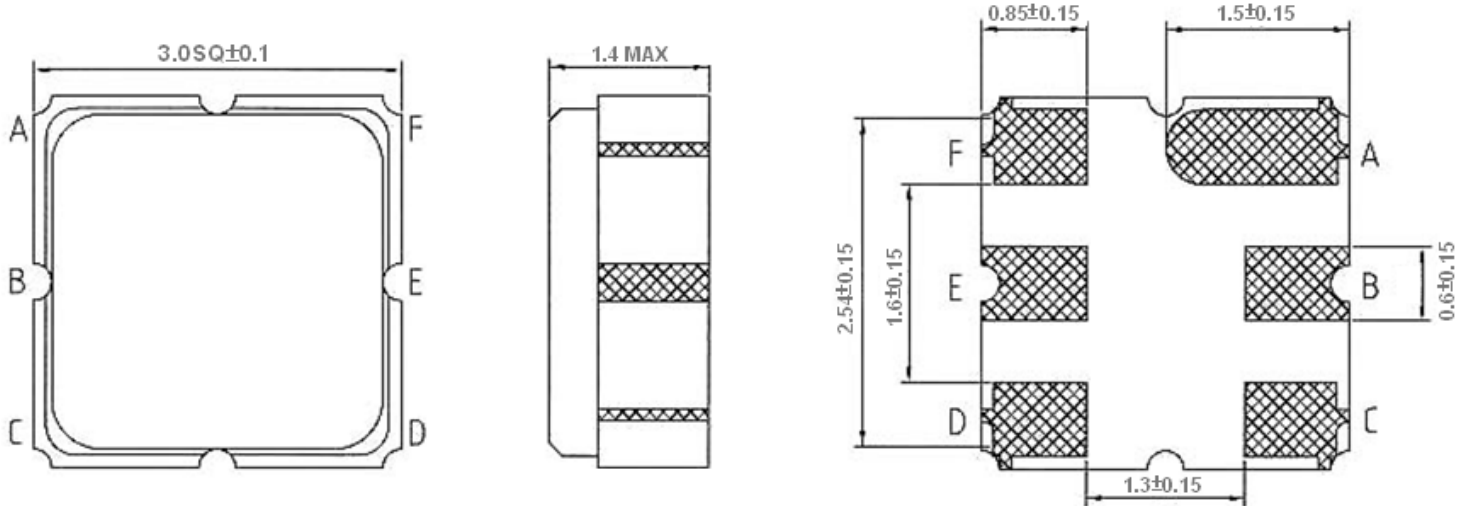
HP Network analyzer



SAW Filter: 423.750MHz
Part No: MP05384

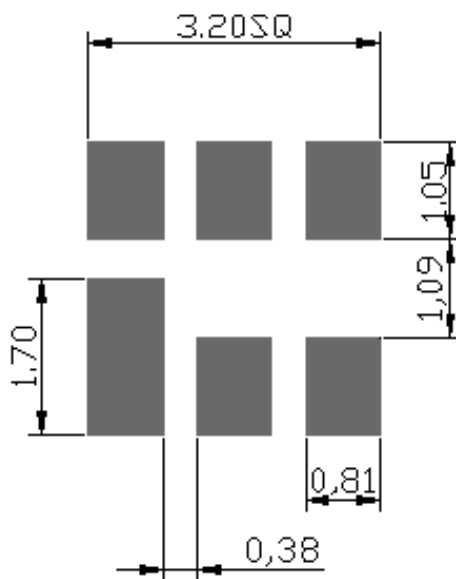
Model: TA1664A
Rev No: 1

D. OUTLINE DRAWING:



B: Input
E: Output
A, C, D, F: Ground
Unit: mm

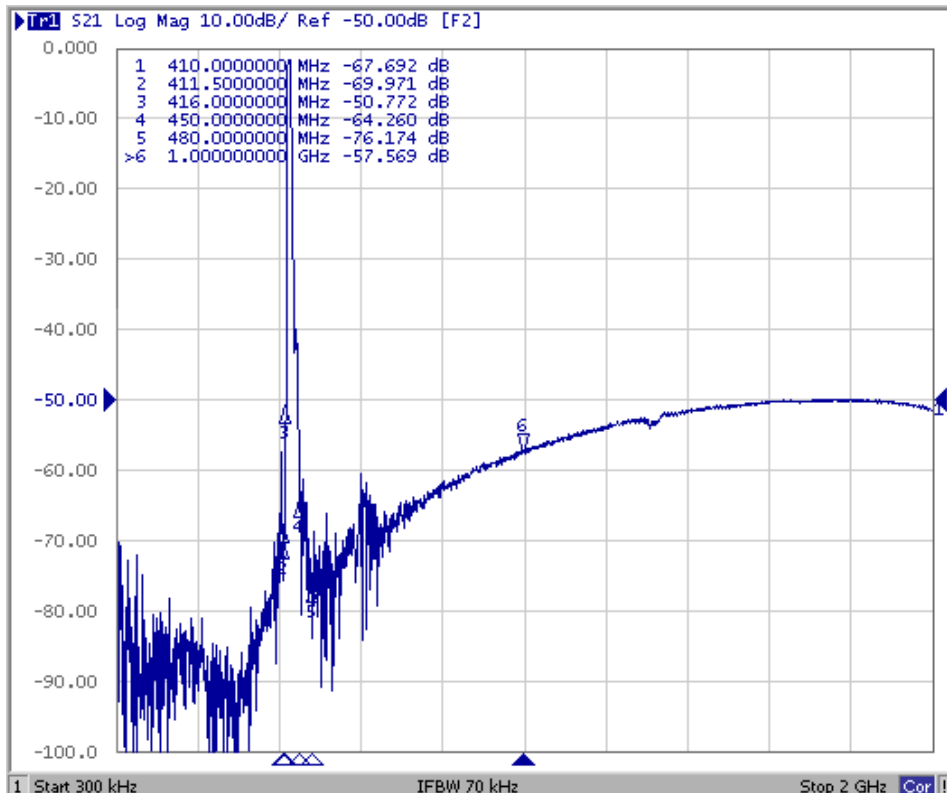
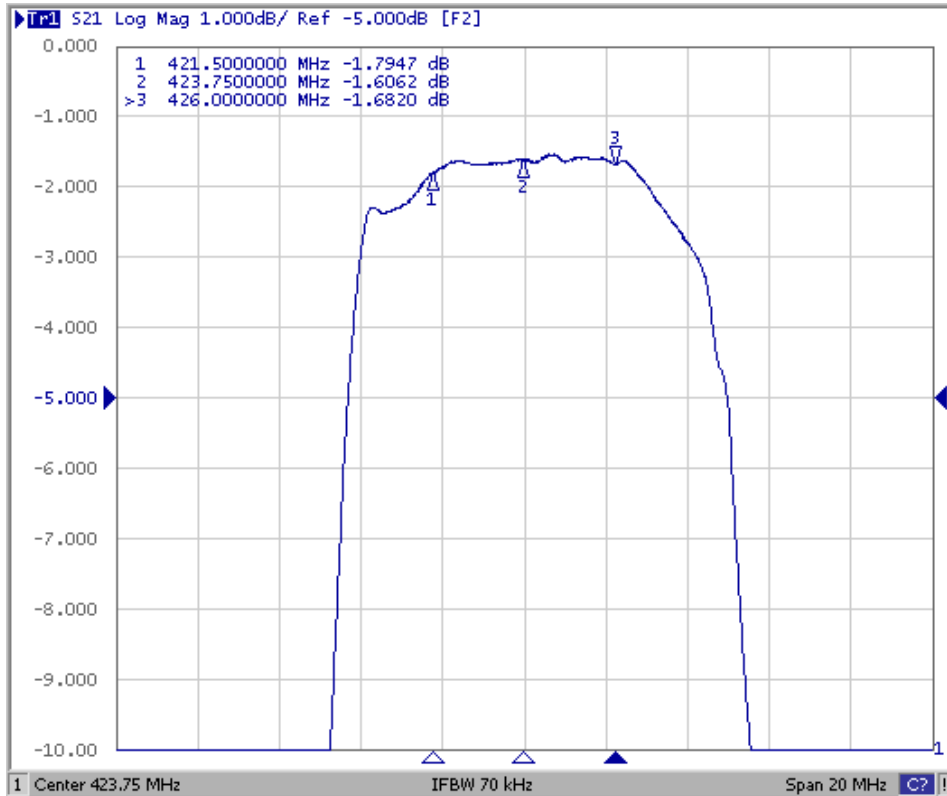
E. PCB FOOTPRINT:



SAW Filter: 423.750MHz
Part No: MP05384

Model: TA1664A
Rev No: 1

F. FREQUENCY CHARACTERISTICS:

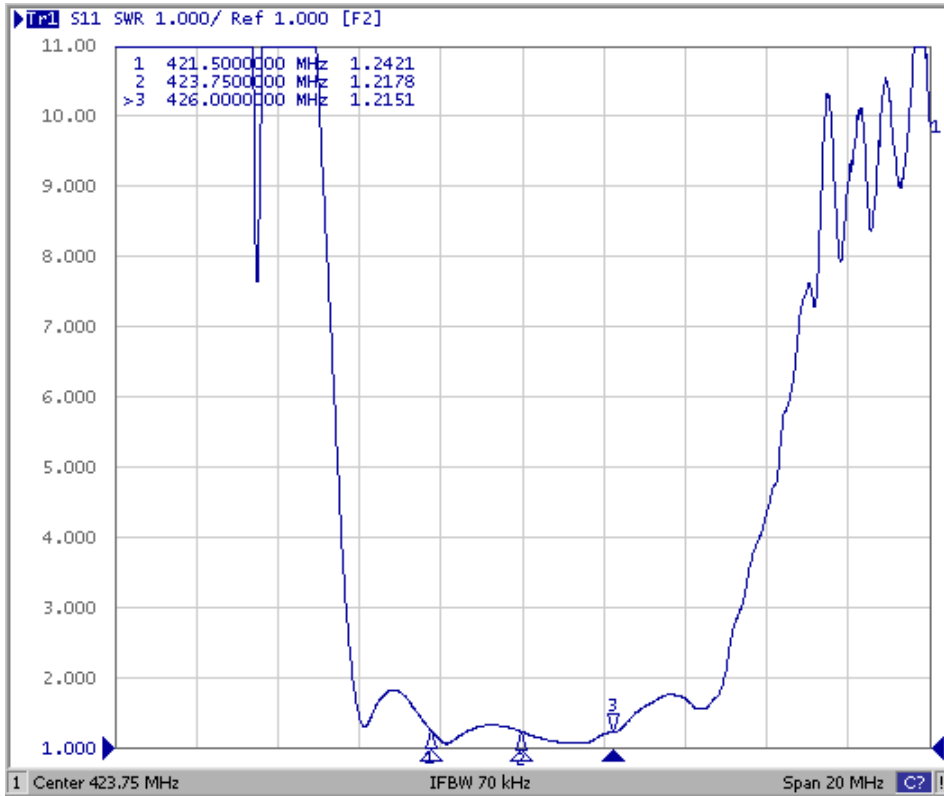


SAW Filter: 423.750MHz
Part No: MP05384

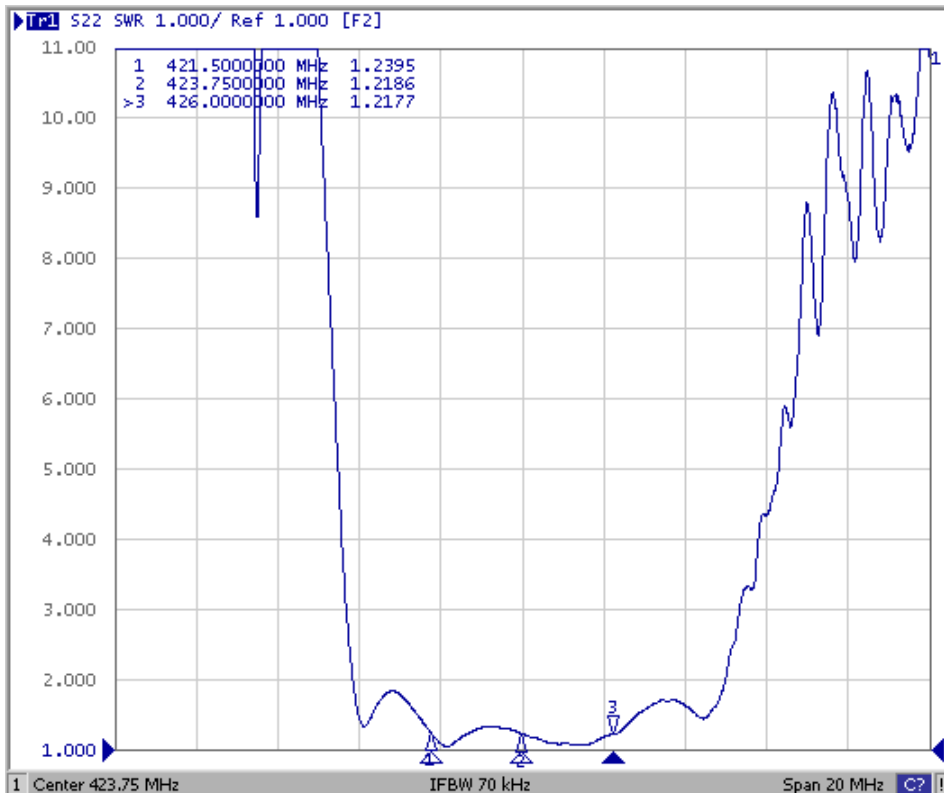
Model: TA1664A
Rev No: 1

Reflection Functions

S11



S22



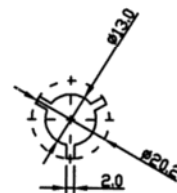
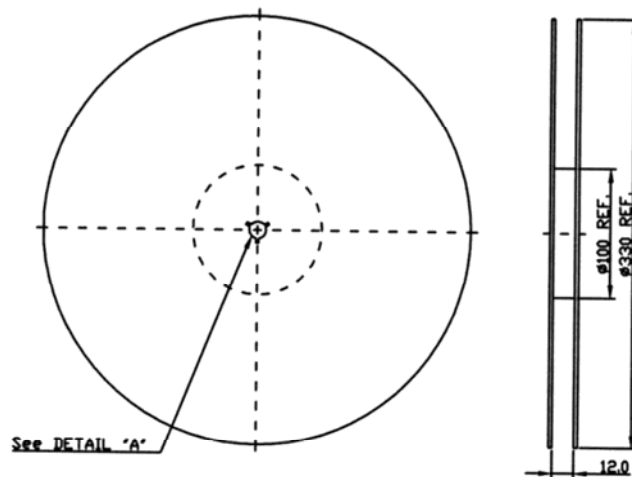
SAW Filter: 423.750MHz
Part No: MP05384

Model: TA1664A
Rev No: 1

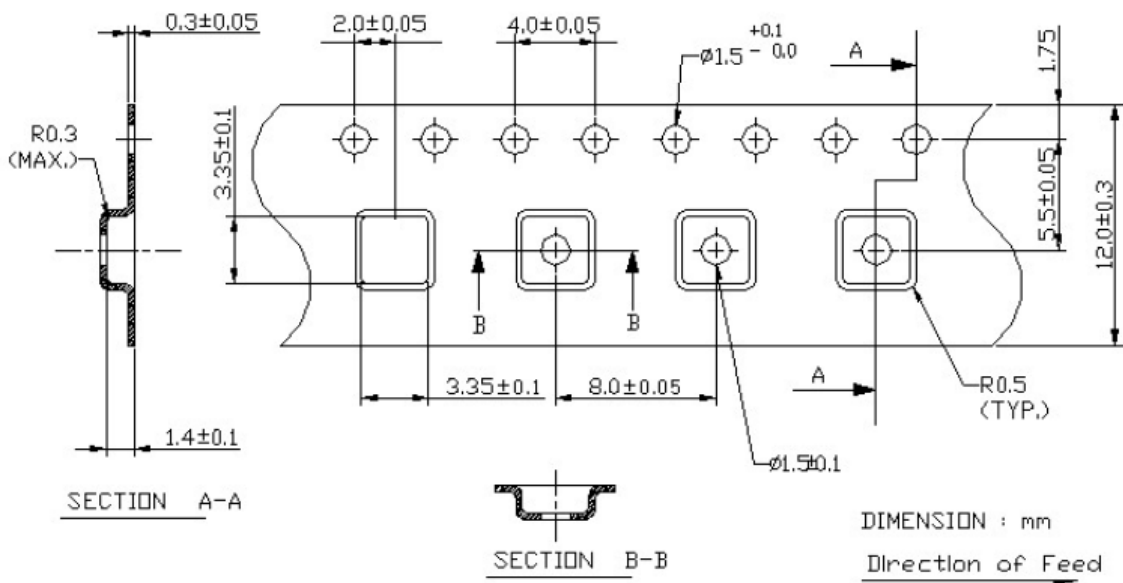
G. PACKING:

1. Reel Dimension

(Please refer to FR-75D10 for packing quantity)



2. Tape Dimension



SAW Filter: 423.750MHz
Part No: MP05384

Model: TA1664A
Rev No: 1

H. RECOMMENDED REFLOW PROFILE:

