

SAW Filter 1207.0MHz
Part No: MP05258

Model: TA1521A
Rev No: 1

A. MAXIMUM RATING:

Electrostatic Sensitive Device (ESD)

1. Input Power Level: 10dBm
2. DC Voltage: 3V
3. Operating Temperature: -40°C to +85°C
4. Storage Temperature: -50°C to +95°C

B. ELECTRICAL CHARACTERISTICS:

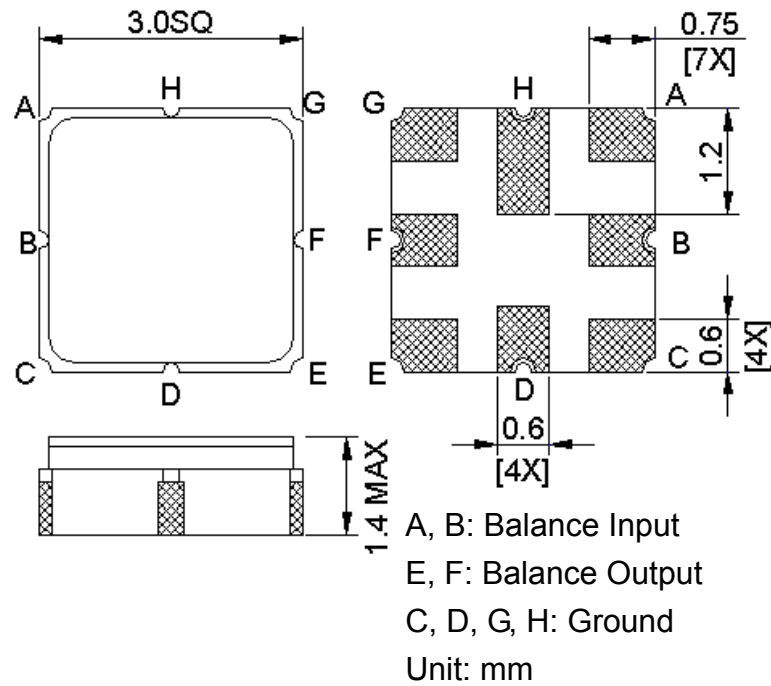
1. Terminating source impedance (differential): $Z_S = 200\Omega // 33nH$
2. Terminating load impedance (differential): $Z_L = 200\Omega // 33nH$

| Item | Unit | Min. | Typ. | Max. | Note |
|----------------------------------------|--------|------|------|------|------|
| Center Frequency Fc | MHz | - | 1207 | - | - |
| Bandwidth at -3dB | MHz | - | 46 | - | - |
| Insertion Loss in 1197 ~ 1217MHz | dB | - | 2.4 | 4 | - |
| Amplitude ripple (1197 ~ 1217MHz) | dB | - | 0.65 | 2 | - |
| Group delay variation (1197 ~ 1217MHz) | ns | - | 12 | 25 | - |
| I/O Return Loss (1197 ~ 1217MHz) | dB | 8 | 10 | - | - |
| Attenuation (reference level from 0dB) | | | | | |
| 10 ~ 910MHz | dB | 43 | 50 | - | - |
| 1360 ~ 2000MHz | dB | 43 | 55 | - | - |
| 2000 ~ 2400MHz | dB | 38 | 64 | - | - |
| Temperature Coefficient of Frequency | ppm/°C | - | -36 | - | - |

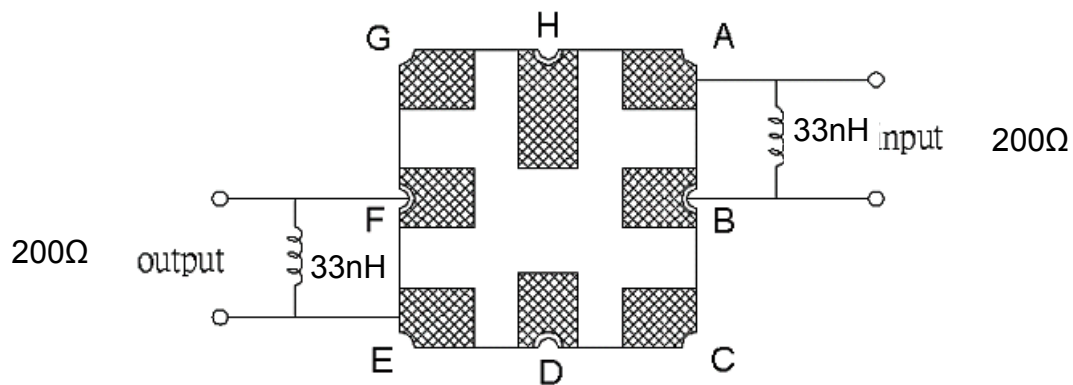
SAW Filter 1207.0MHz
Part No: MP05258

Model: TA1521A
Rev No: 1

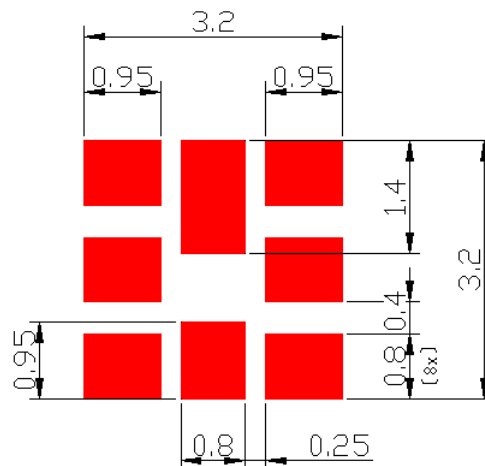
C. OUTLINE DRAWING:



D. MEASUREMENT CIRCUIT:



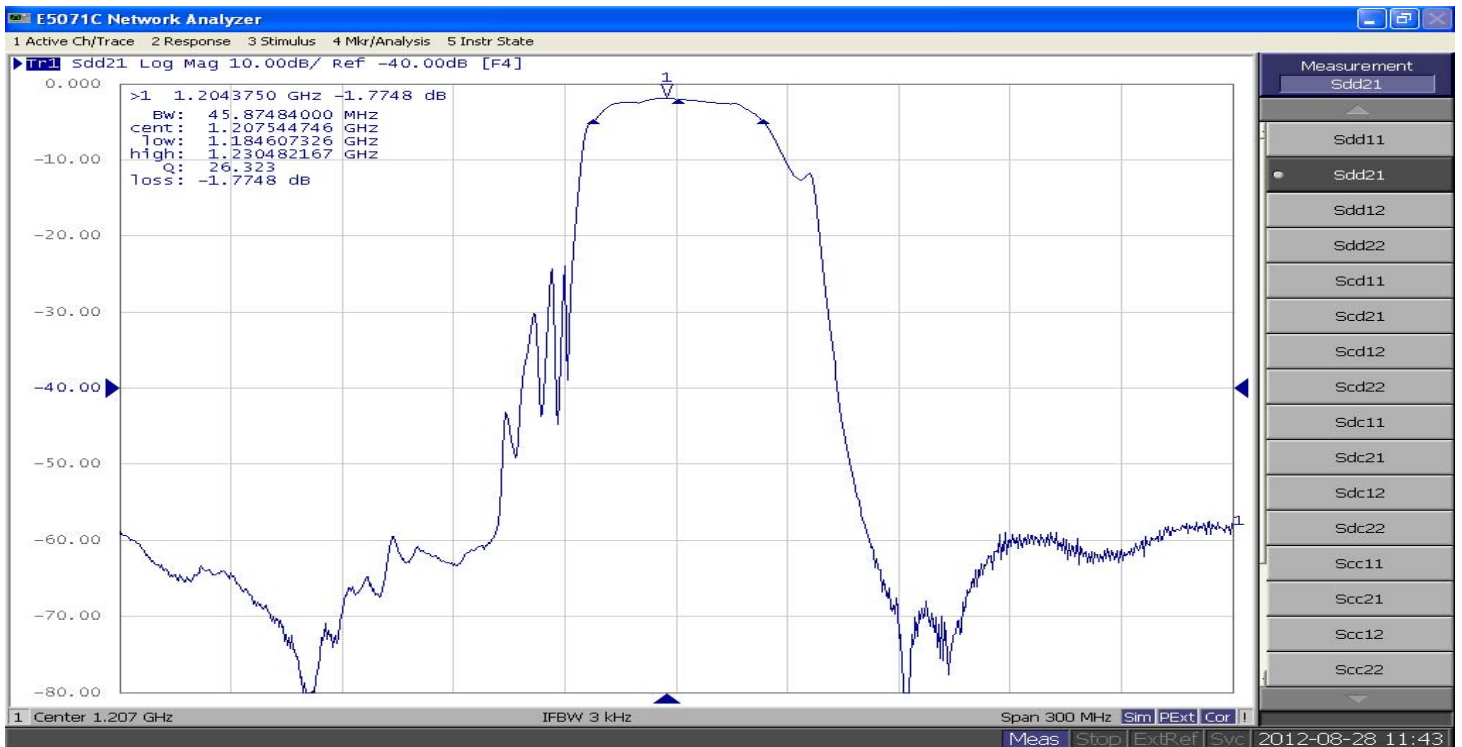
E. PCB FOOTPRINT:



SAW Filter 1207.0MHz
Part No: MP05258

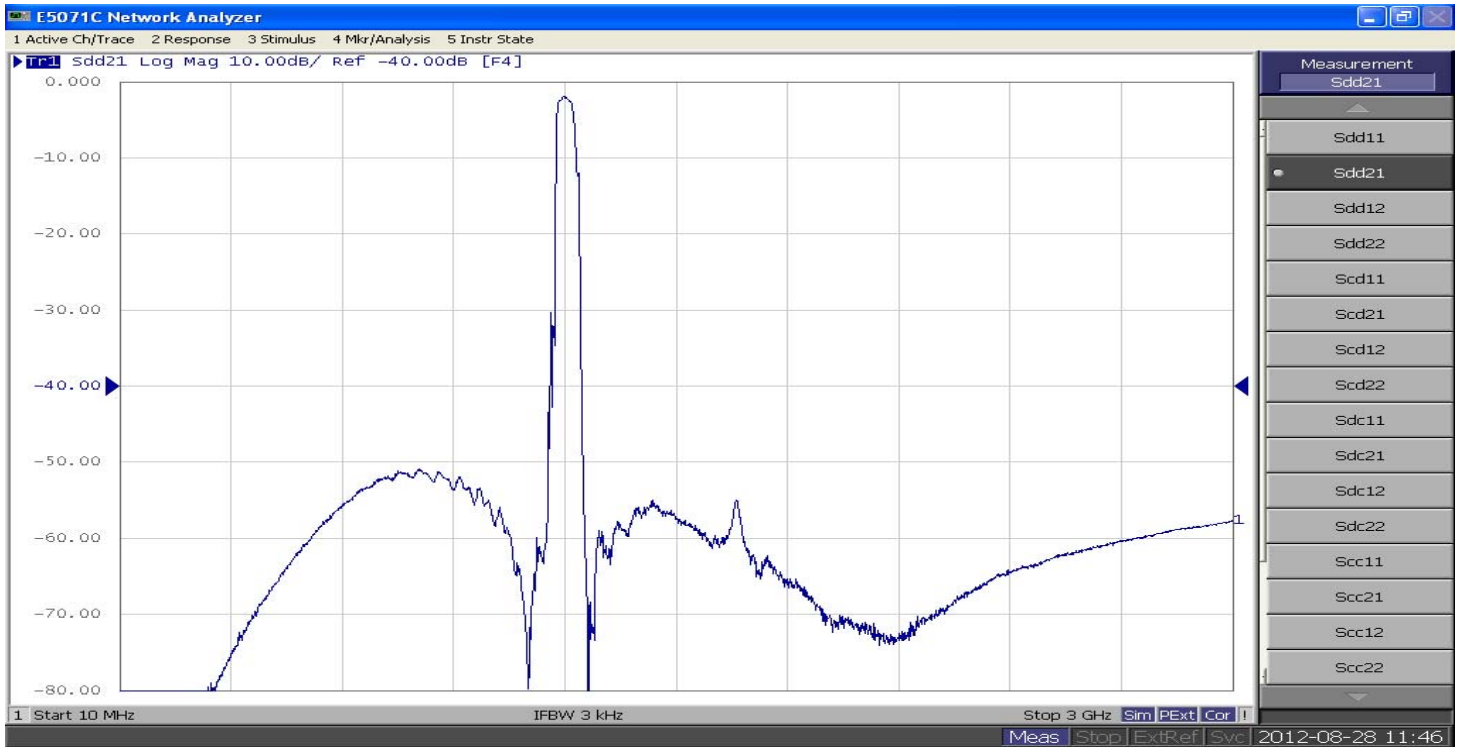
Model: TA1521A
Rev No: 1

F. FREQUENCY CHARACTERISTICS:



SAW Filter 1207.0MHz
Part No: MP05258

Model: TA1521A
Rev No: 1



SAW Filter 1207.0MHz
Part No: MP05258

Model: TA1521A
Rev No: 1

Reflection Functions

S11



S22



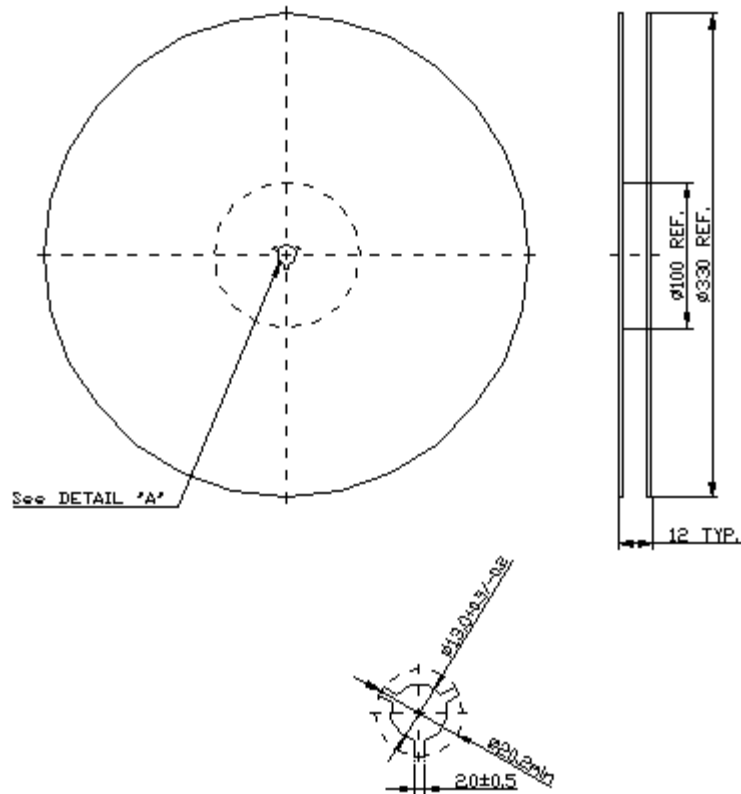
SAW Filter 1207.0MHz
Part No: MP05258

Model: TA1521A
Rev No: 1

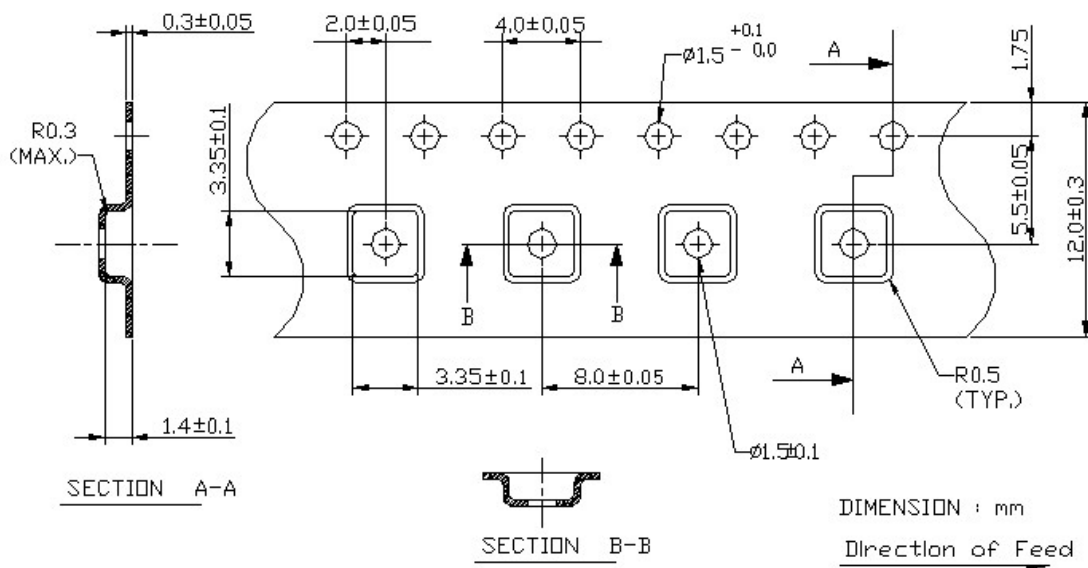
G. PACKING:

1. Reel Dimension

(Please refer to FR-75D10 for packing quantity)



2. Tape Dimension



SAW Filter 1207.0MHz
Part No: MP05258

Model: TA1521A
Rev No: 1

H. RECOMMENDED REFLOW PROFILE:

1. Preheating shall be fixed at 150 ~ 180°C for 60 ~ 90 seconds.
2. Ascending time to preheating temperature 150°C shall be 30 seconds min.
3. Heating shall be fixed at 220°C for 50 ~ 80 seconds and at 245 ~ 260°C peak (min. 10sec).
4. Time: 2 times.

