

SAW Duplexer 902.50 - 947.50MHz
Part No: MP05245

Model: TF0049A
Rev No: 1

A. MAXIMUM RATING:

Electrostatic Sensitive Device (ESD)

1. Input Power Level: 1W
2. DC Voltage: 10V
3. Operating Temperature: -30°C to +85°C
4. Storage Temperature: -40°C to +85°C

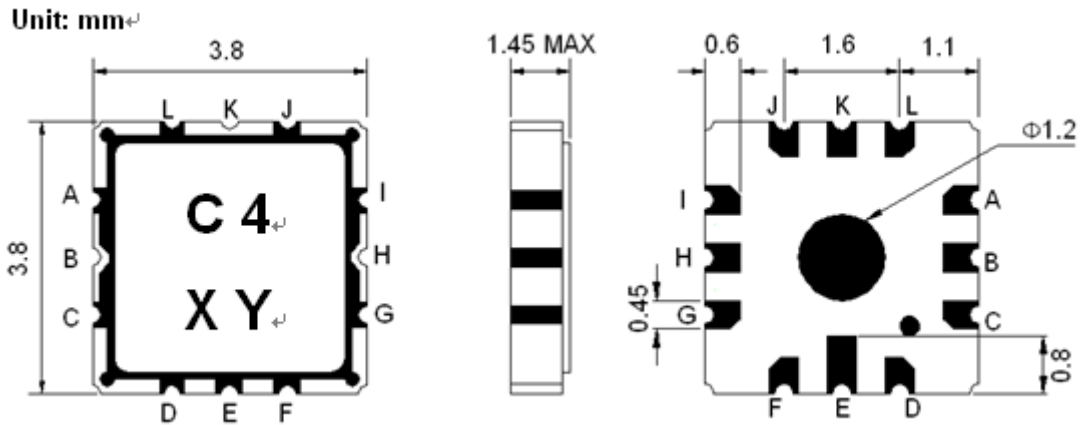
B. ELECTRICAL CHARACTERISTICS:

Tx_902.5MHz		SPECIFICATIONS			
ITEM	CONDITION [MHz]	Unit	Min.	Typ.	Max.
Insertion Loss	890 ~ 915	dB	-	1.7	2.2
Ripple	890 ~ 915	dB _{p-p}	-	0.7	1.2
VSWR	Ant. Port	-	-	1.6	2.0
	Tx Port	-	-	1.5	2.0
Absolute Attenuation	0.3 ~ 860	dB	10	16	-
	935 ~ 960	dB	45	50	-
	1570 ~ 1580	dB	10	18	-
	1710 ~ 2170	dB	8	15	-
	2300 ~ 2500	dB	3	7	-
Rx_947.5MHz		SPECIFICATIONS			
ITEM	CONDITION [MHz]	Unit	Min.	Typ.	Max.
Insertion Loss	935 ~ 960	dB	-	2.3	2.8
Ripple	935 ~ 960	dB _{p-p}	-	1.0	1.5
VSWR	Ant. Port	-	-	1.7	2.0
	Rx Port	-	-	1.6	2.0
Absolute Attenuation	0.3 ~ 860	dB	25	32	-
	890 ~ 915	dB	50	55	-
	1570 ~ 1580	dB	45	55	-
	1710 ~ 2170	dB	50	57	-
	2300 ~ 2500	dB	40	48	-
Rx → Tx		SPECIFICATIONS			
ITEM	CONDITION [MHz]	Unit	Min.	Typ.	Max.
Isolation	890 ~ 915	dB	50	55	-
	935 ~ 960	dB	48	53	-

SAW Duplexer 902.50 - 947.50MHz
Part No: MP05245

Model: TF0049A
Rev No: 1

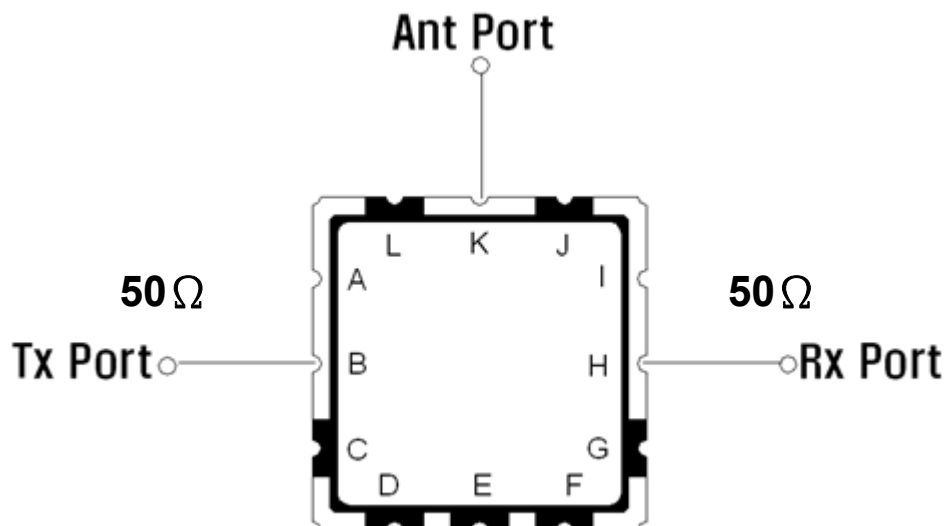
C. OUTLINE DRAWING:



Marking Descriptions	
C	GSM Application
4	SAW Duplexer
X	Date Code(Year)
Y	Date Code(Month)

Pin Description	
A, C, D, E, F, G, I, J, L	Ground
H	Rx Port(947.5MHz)
K	Antenna
B	Tx Port (902.5MHz)

D. MEASUREMENT CIRCUIT:

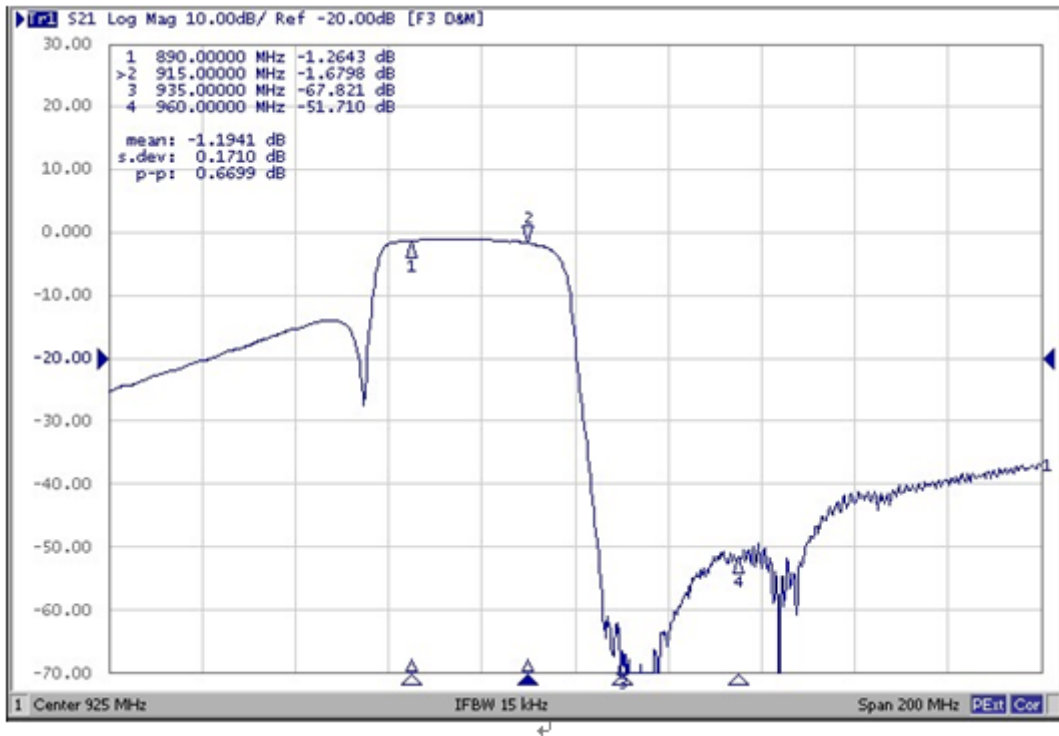


SAW Duplexer 902.50 - 947.50MHz
Part No: MP05245

Model: TF0049A
Rev No: 1

E. FREQUENCY CHARACTERISTICS:

1. Tx to Ant



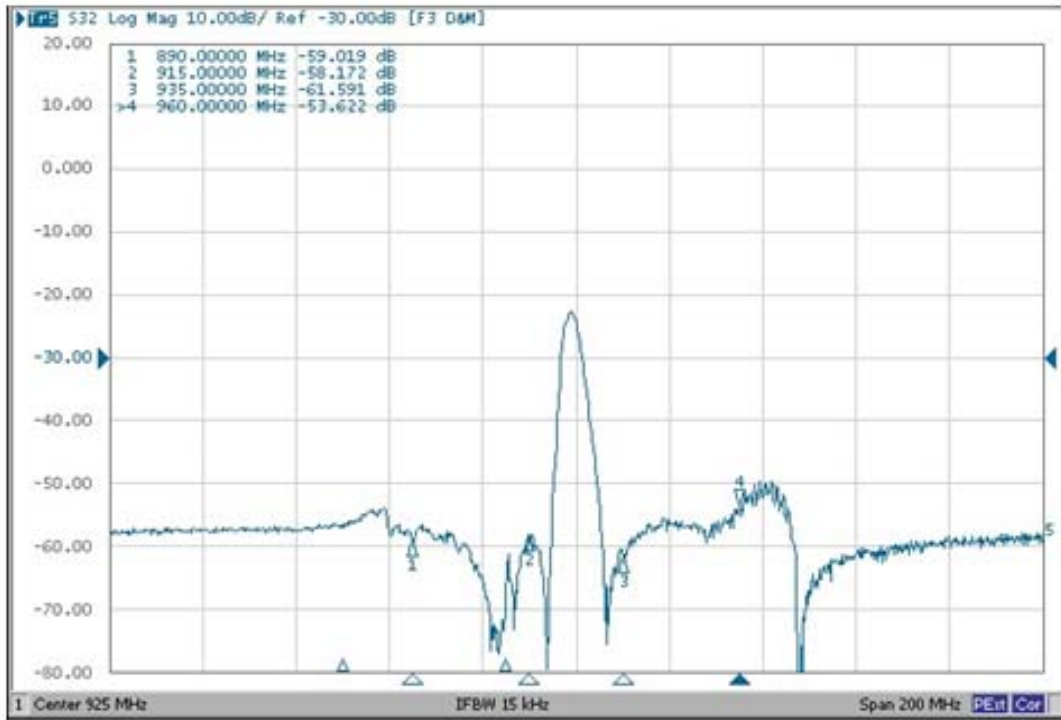
2. Ant to Rx



SAW Duplexer 902.50 - 947.50MHz
Part No: MP05245

Model: TF0049A
Rev No: 1

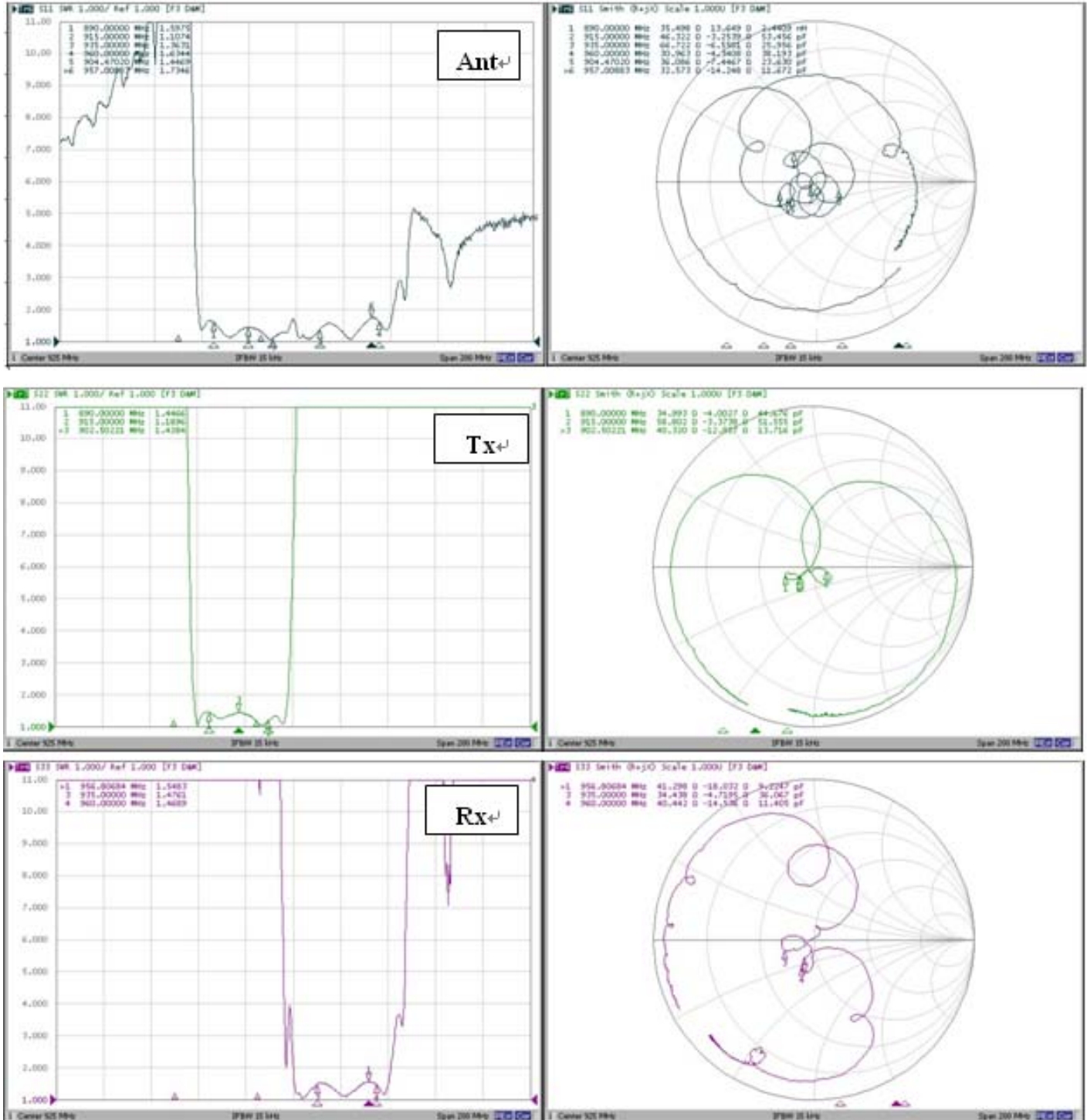
3. Isolation



SAW Duplexer 902.50 - 947.50MHz
Part No: MP05245

Model: TF0049A
Rev No: 1

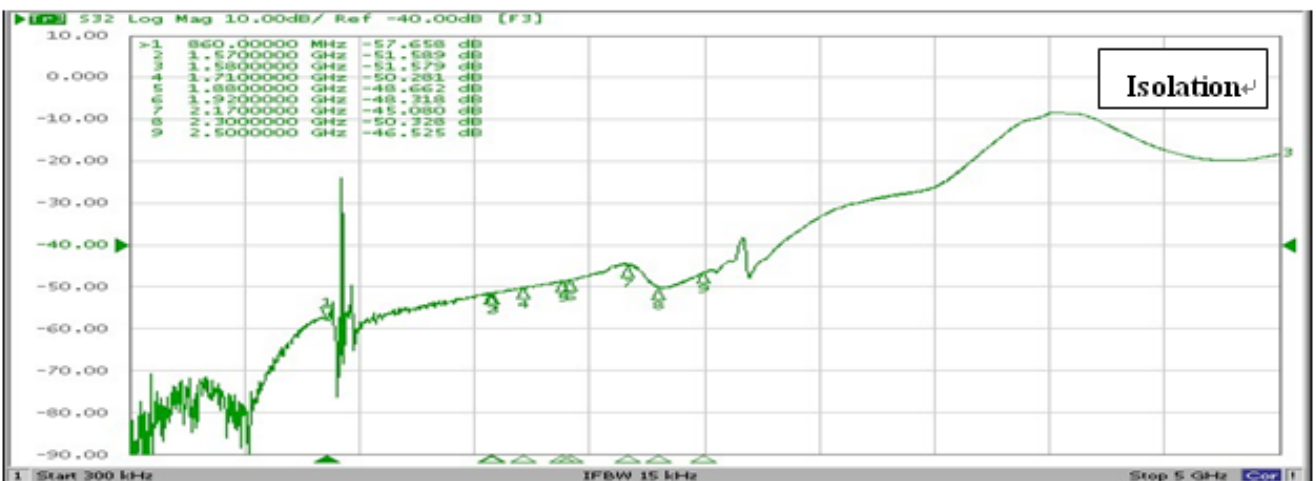
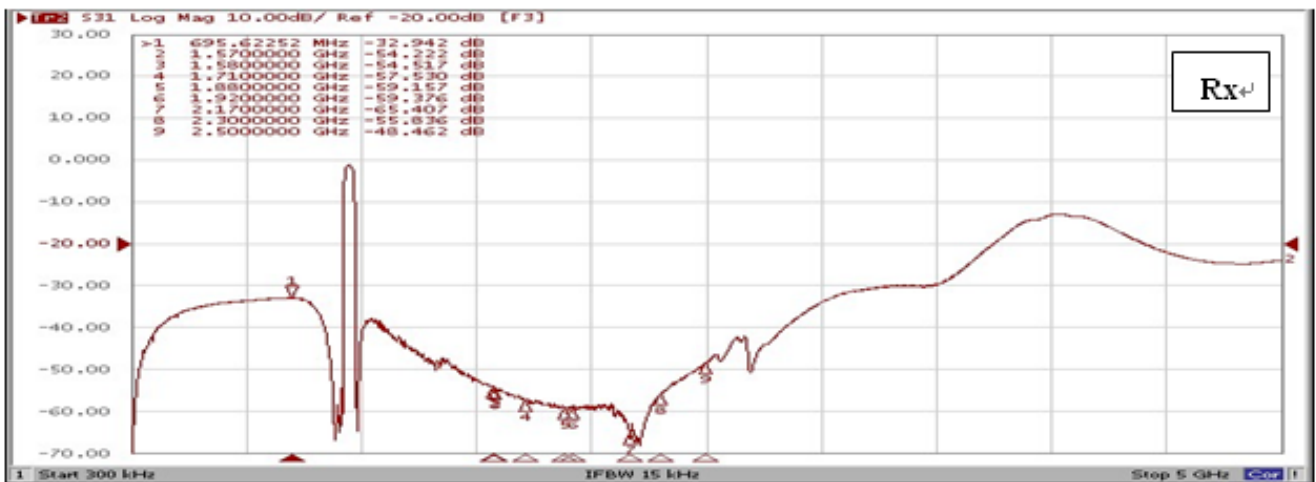
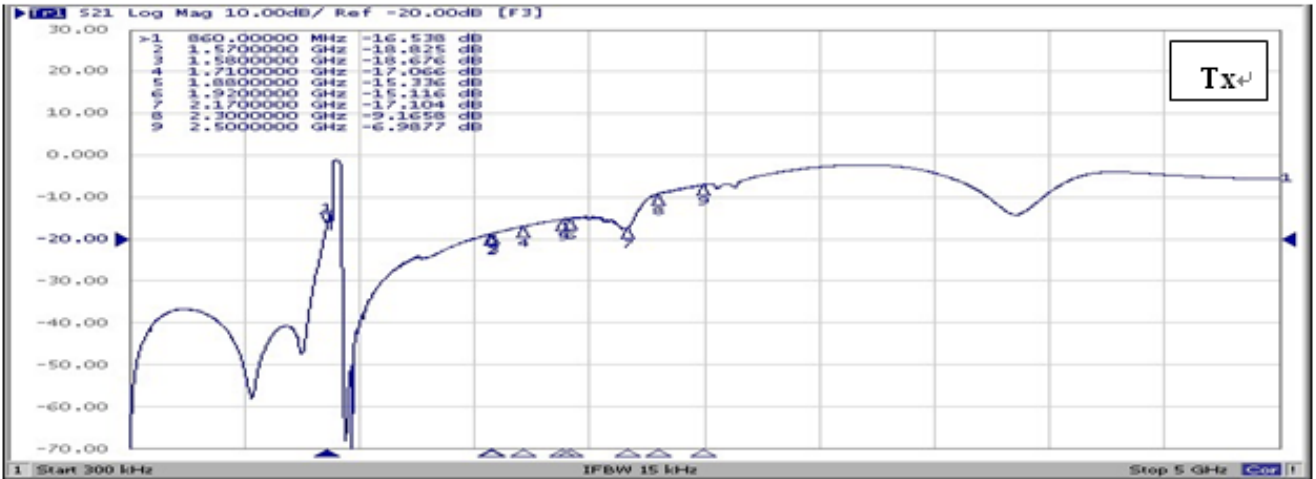
4. VSWR & Smith Chart



SAW Duplexer 902.50 - 947.50MHz
Part No: MP05245

Model: TF0049A
Rev No: 1

5. Wide Span



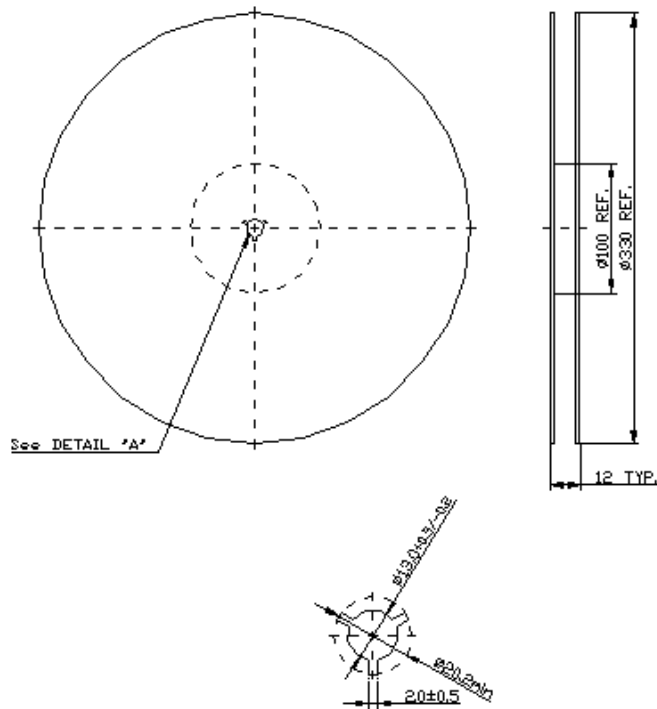
SAW Duplexer 902.50 - 947.50MHz
Part No: MP05245

Model: TF0049A
Rev No: 1

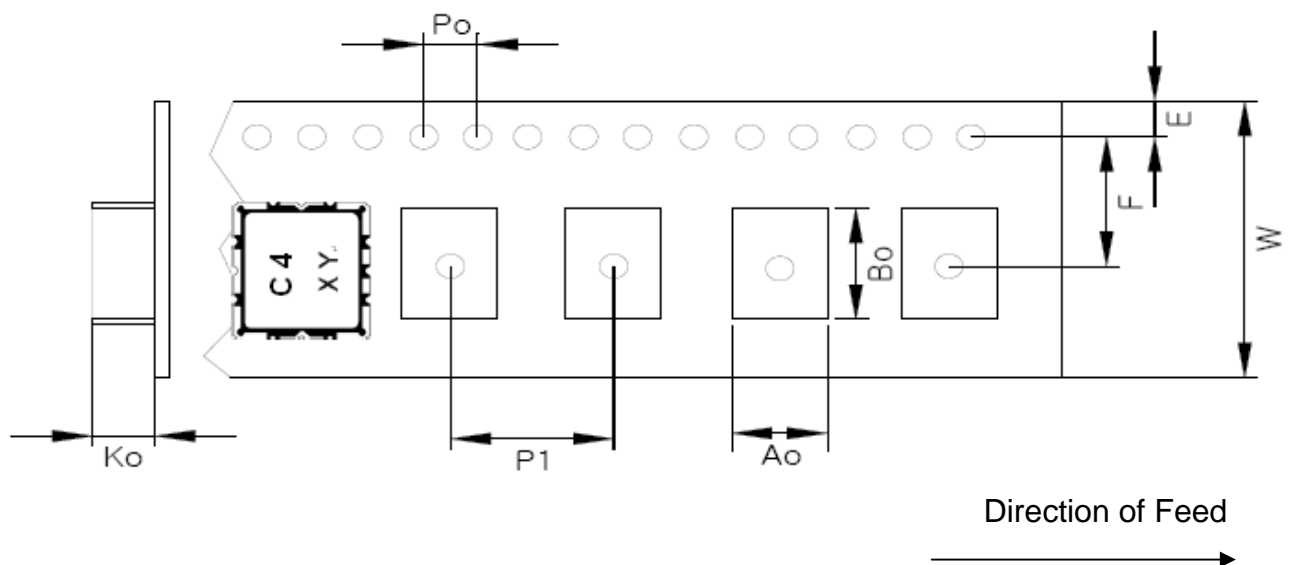
F. PACKING:

1. Reel Dimension

(Reel Count: 7" = 1000; 13" = 3000)



2. Tape Dimension



SAW Duplexer 902.50 - 947.50MHz
Part No: MP05245

Model: TF0049A
Rev No: 1

G. RECOMMENDED REFLOW PROFILE:

