

**SAW Filter 504.0MHz**  
**Part No: MP04076**

**Model: TA0978A**  
**Rev No: 2**

**A. MAXIMUM RATING:**

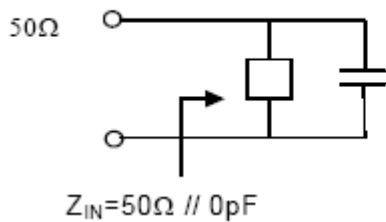
Electrostatic Sensitive Device (ESD)

1. Input Power Level: 10dBm
2. DC voltage: 10V
3. Operating Temperature: -10°C to +50°C
4. Storage Temperature: -40°C to +85°C

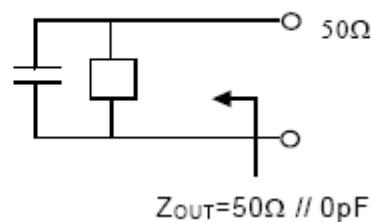
**B. ELECTRICAL CHARACTERISTICS:**

Item	Unit	Min.	Typ.	Max.
Center frequency Fc	MHz	-	504	-
Insertion Loss 500 ~ 508MHz IL	dB	-	2.5	4.5
Amplitude ripple 500 ~ 508MHz	dB	-	0.3	2.5
Attenuation: (Reference level from 0dB)				
404 ~ 463.2MHz	dB	42	53	-
544 ~ 604MHz	dB	42	50	-
Impedance at Fc: Input $Z_{IN} = R_{IN} // C_{IN}$ Output $Z_{OUT} = R_{OUT} // C_{OUT}$	$\Omega$	50 $\Omega$ // 0pF 50 $\Omega$ // 0pF		

Source impedance



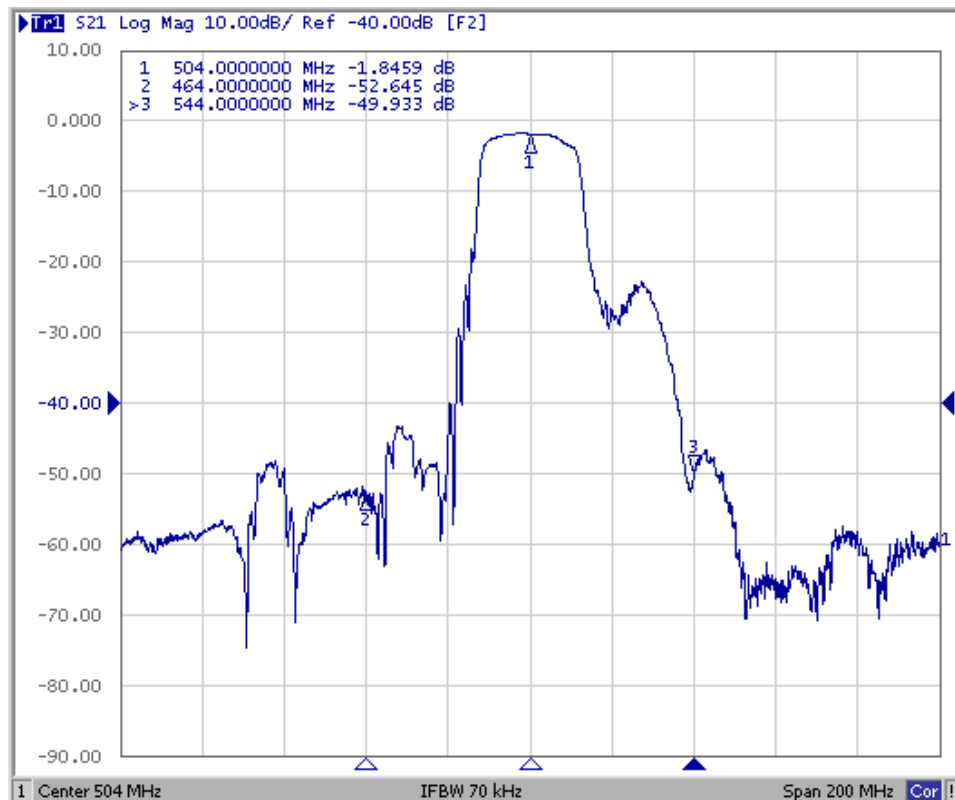
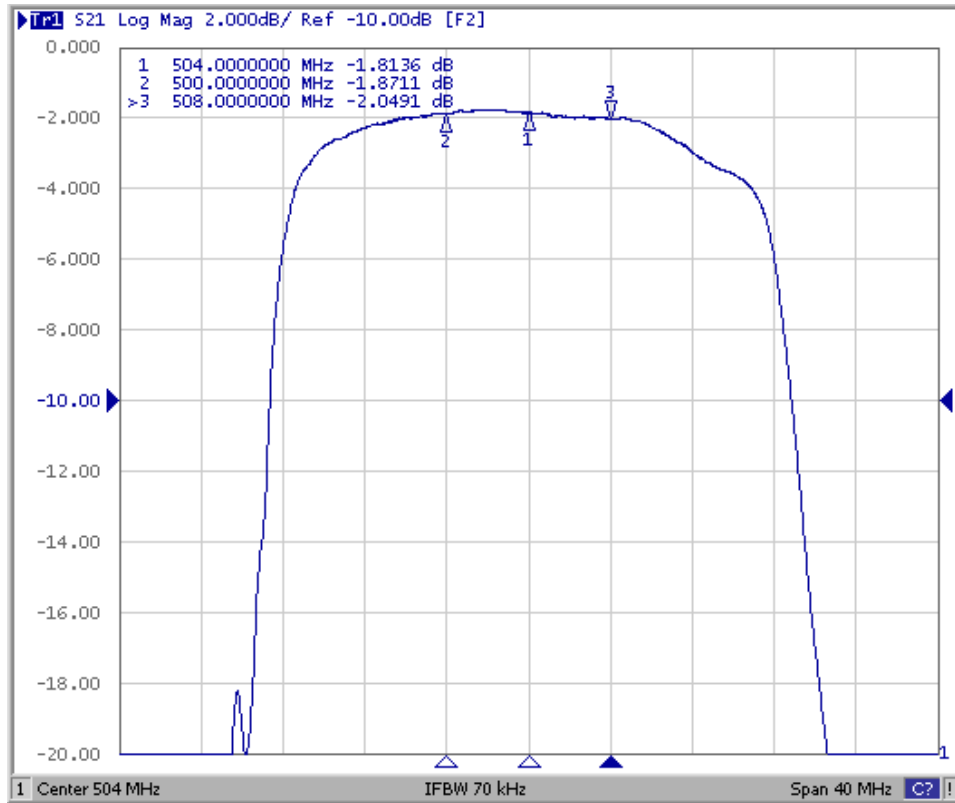
Load impedance



**SAW Filter 504.0MHz**  
**Part No: MP04076**

**Model: TA0978A**  
**Rev No: 2**

**C. FREQUENCY CHARACTERISTICS:**

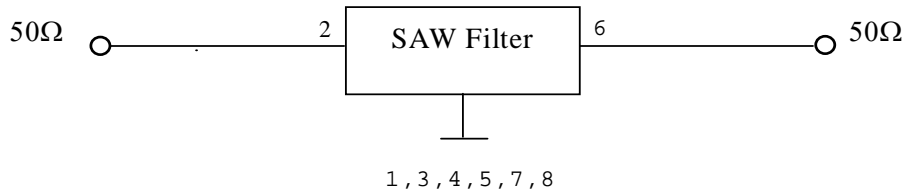


**SAW Filter 504.0MHz**  
**Part No: MP04076**

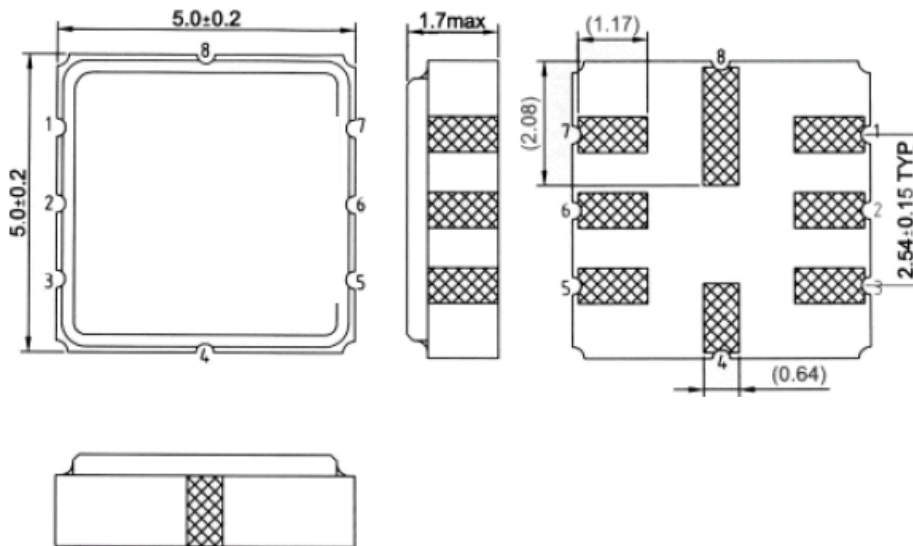
**Model: TA0978A**  
**Rev No: 2**

**D. MEASUREMENT CIRCUIT:**

HP Network analyzer

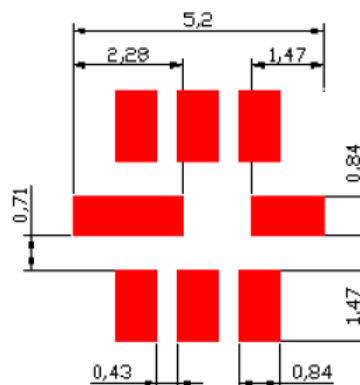


**E. OUTLINE DRAWING:**



- #2 : Input
- #6 : Output
- #4 、 8 : Case Ground
- #1 、 3 、 5 、 7 : Ground

**F. PCB FOOTPRINT:**



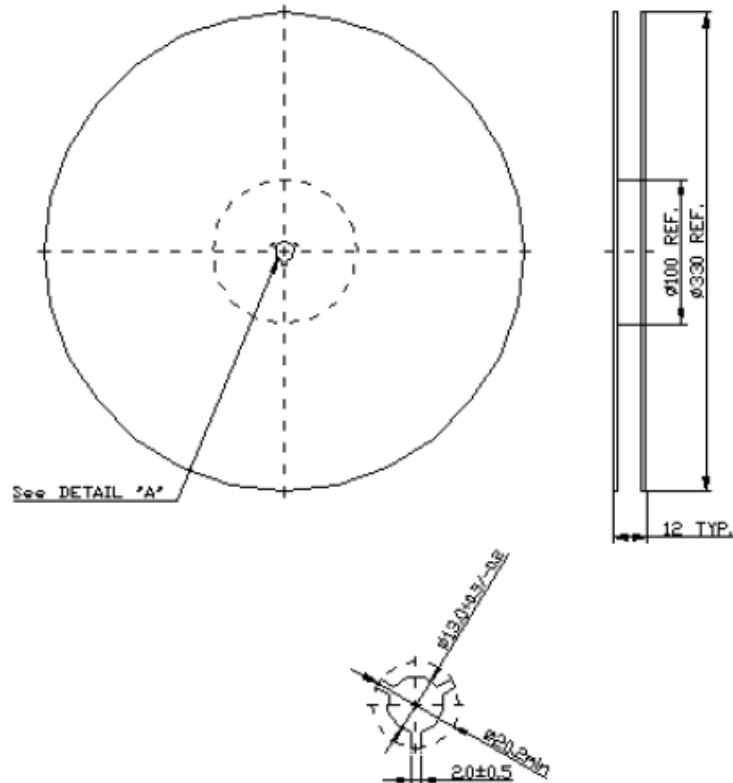
**SAW Filter 504.0MHz**  
**Part No: MP04076**

**Model: TA0978A**  
**Rev No: 2**

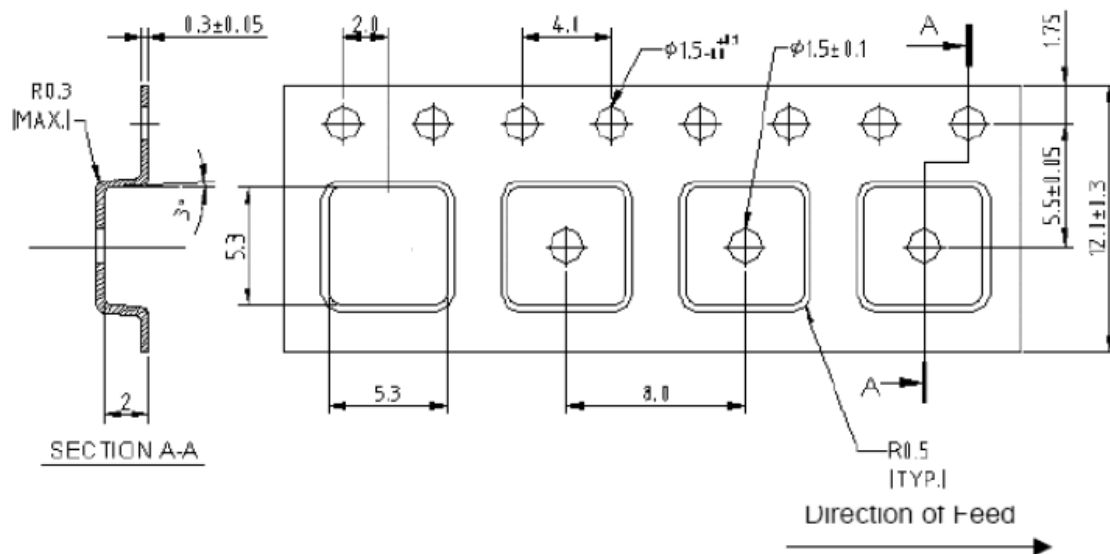
**G. PACKING:**

1. Reel Dimension (Please refer to FR-75D10 for packing quantity)

(Reel Count : 7"=1000 ; 13"=3000 or per the request of customer order)



2. Tape Dimension



**SAW Filter 504.0MHz**  
**Part No: MP04076**

**Model: TA0978A**  
**Rev No: 2**

**H. RECOMMENDED REFLOW PROFILE:**

1. Preheating shall be fixed at 150 ~ 180°C for 60 ~ 90 seconds.
2. Ascending time to preheating temperature 150°C shall be 30 seconds min.
3. Heating shall be fixed at 220°C for 50 ~ 80 seconds and at 260°C +0/-5°C peak (20 ~ 40sec).
4. Time: 2 times.

