

SAW Filter 313.850MHz
Part No: MP03962

Model: TA0518A
Rev No: 1

A. MAXIMUM RATING:

1. Input Power Level: 10dBm
2. DC voltage: 5V
3. Operating Temperature: -40°C to +85°C
4. Storage Temperature: -40°C to +85°C

B. ELECTRICAL CHARACTERISTICS:

TA = -40°C to +95°C

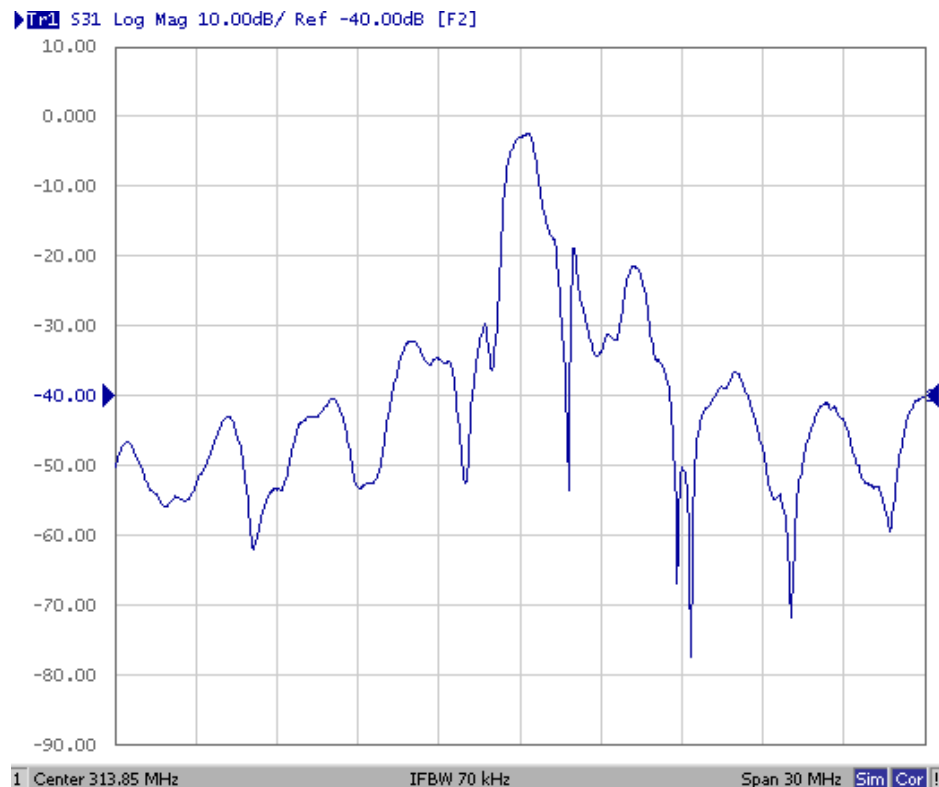
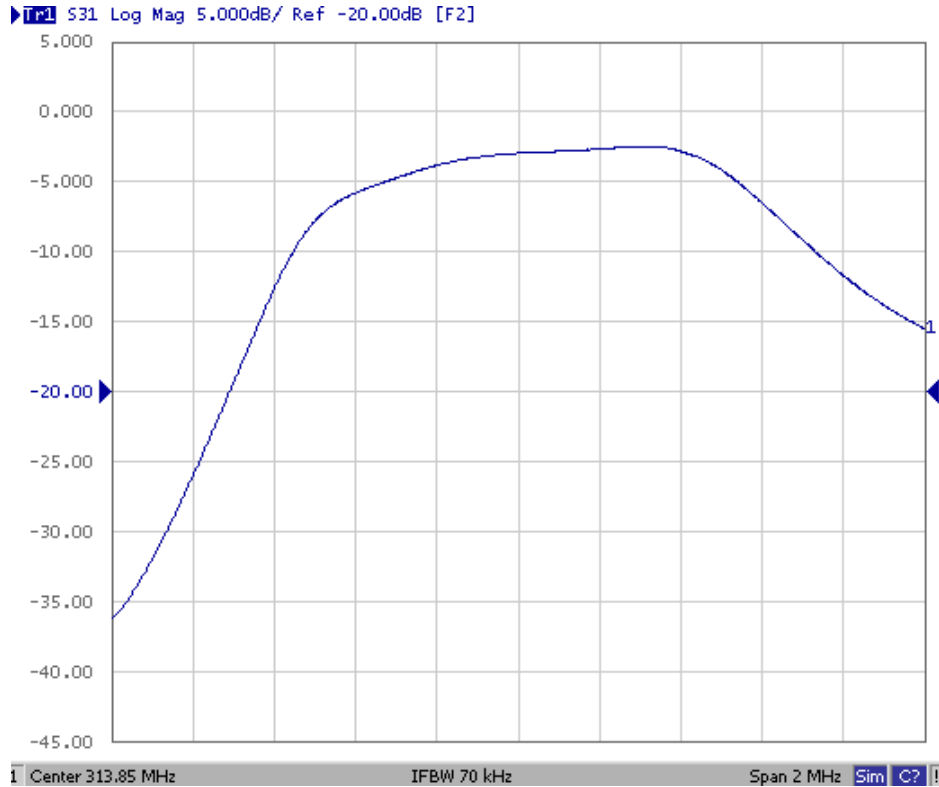
Item	Min.	Typ.	Max.	Note
Center frequency Fc (MHz)	-	313.85	-	1
Minimum IL (313.67 ~ 314.07MHz) (dB) IL min	-	2.7	4.0	
Pass band (relative to IL min)				
313.62 ~ 314.05MHz (dB)	-	1.5	3.0	1
313.56 ~ 314.11 MHz (dB)	-	2.0	6.0	
Pass bandwidth (relative to IL min) BW3 (kHz)	800	970	-	
Attenuation:(relative to IL min) (dB)				
10 ~ 270MHz (dB)	45	50	-	
270 ~ 307MHz (dB)	30	35	-	1
307 ~ 312.76MHz (dB)	15	20	-	
315 ~ 335MHz (dB)	10	15	-	
335 ~ 400MHz (dB)	35	40	-	
400 ~ 1000MHz (dB)	45	50	-	
Impedance at F _C ; Input Z _{IN} = R _{IN} // C _{IN}	29Ω // 3.17pF			
Output Z _{OUT} = R _{OUT} // C _{OUT}	29Ω // 3.17pF			

Note 1: The standard definitions is in JIS C 6703

SAW Filter 313.850MHz
Part No: MP03962

Model: TA0518A
Rev No: 1

C. FREQUENCY CHARACTERISTICS:

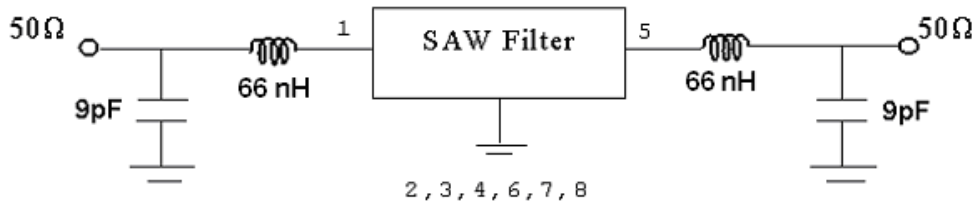


SAW Filter 313.850MHz
Part No: MP03962

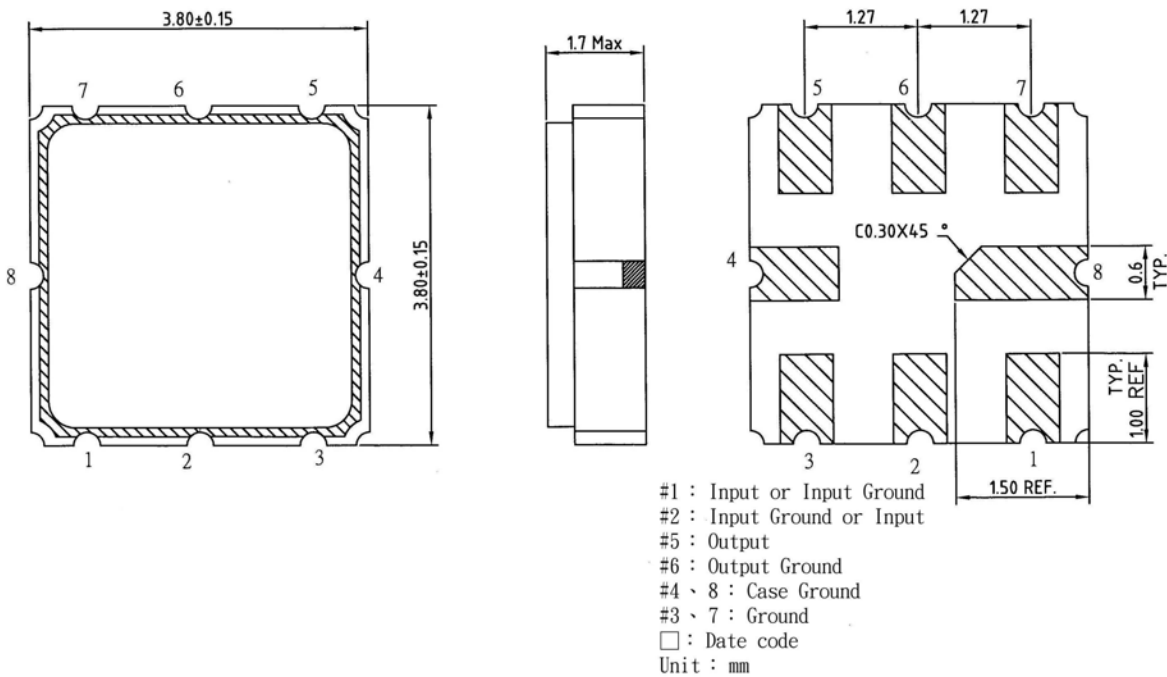
Model: TA0518A
Rev No: 1

D. MEASUREMENT CIRCUIT:

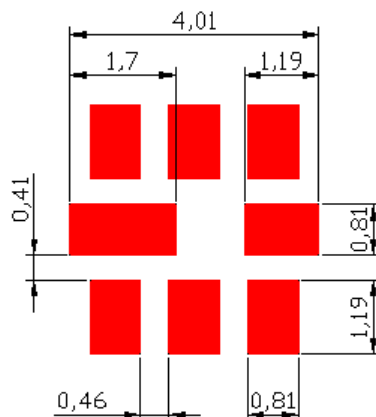
HP Network analyzer



E. OUTLINE DRAWING:



F. PCB FOOTPRINT:

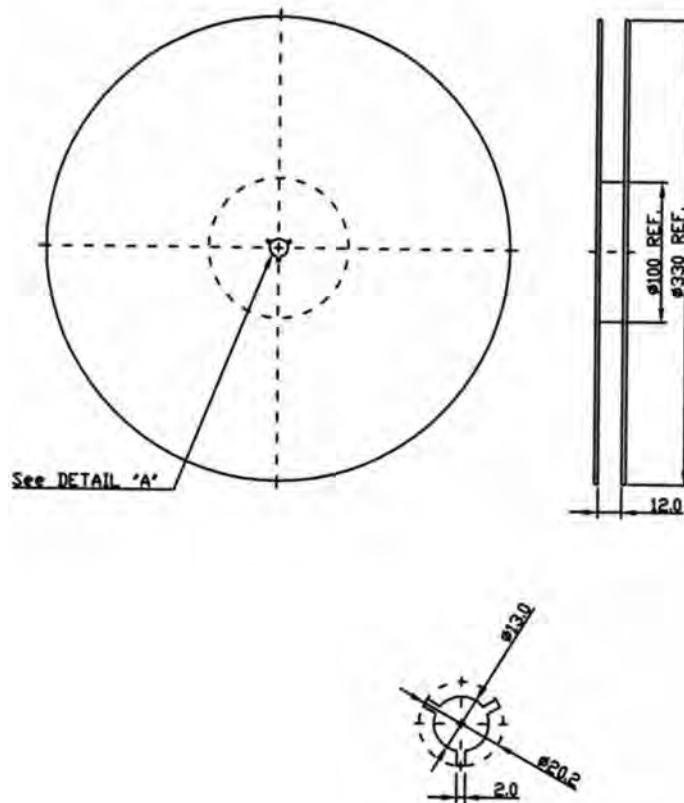


SAW Filter 313.850MHz
Part No: MP03962

Model: TA0518A
Rev No: 1

G. PACKING:

1. Reel Dimension



2. Tape Dimension

