

**SAW Filter 400.0MHz**  
**Part No: MP03754**

**Model: TA0971A**  
**Rev No: 1**

**A. MAXIMUM RATING:**

1. Input Power Level: 10dBm
2. DC voltage: 6V
3. Operating Temperature: -40°C to +125°C
4. Storage Temperature: -40°C to +125°C

**B. ELECTRICAL CHARACTERISTICS:**

Item	Min.	Typ.	Max.	Note
Center frequency F <sub>c</sub> (MHz)	-	400	-	1
Minimum IL (dB) IL min	-	3.0	4.0	
Pass band (relative to IL min) 399.875 ~ 400.125MHz (dB)	-	0.7	3.0	1
Attenuation: (relative to IL min) (dB)				
10.0 ~ 370.0MHz (dB)	50	56	-	1
370.0 ~ 390.0MHz (dB)	42	46	-	
390.0 ~ 398.8MHz (dB)	22	25	-	
401.0 ~ 409.0MHz (dB)	10	22	-	
409.0 ~ 414.0MHz (dB)	30	40	-	
414.0 ~ 800.0MHz (dB)	42	50	-	
800.0 ~ 2500.0MHz (dB)	45	55	-	
Impedance at F <sub>c</sub> ; Input Z <sub>IN</sub> = R <sub>IN</sub> // C <sub>IN</sub> Output Z <sub>OUT</sub> = R <sub>OUT</sub> // C <sub>OUT</sub>	865Ω // 2 pF			
Turnover T <sub>o</sub> (deg. C)				

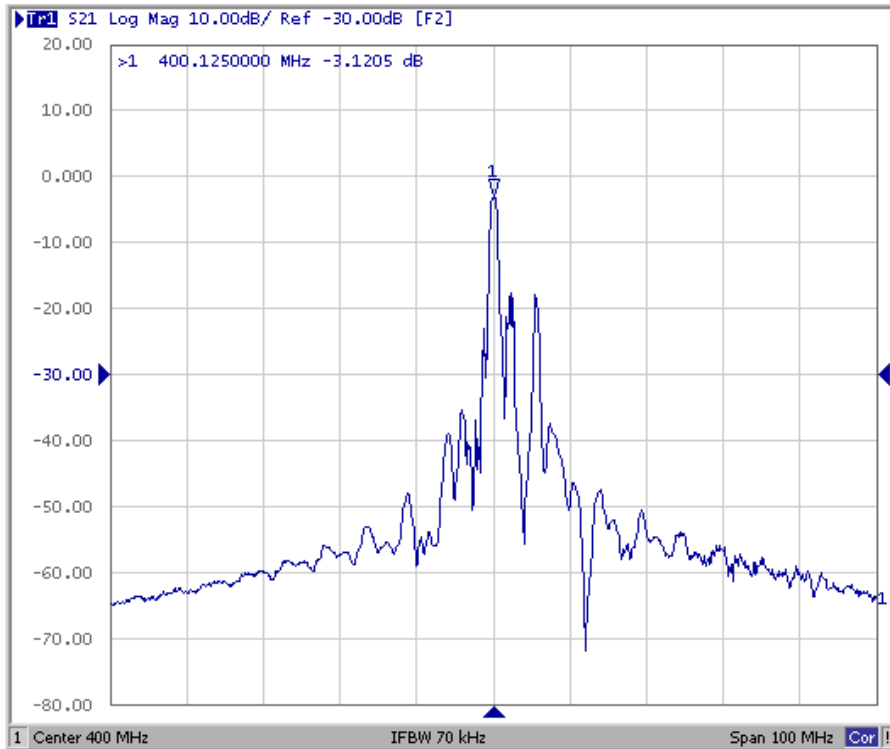
Note 1: The standard definitions is in JIS C 6703

**SAW Filter 400.0MHz**  
**Part No: MP03754**

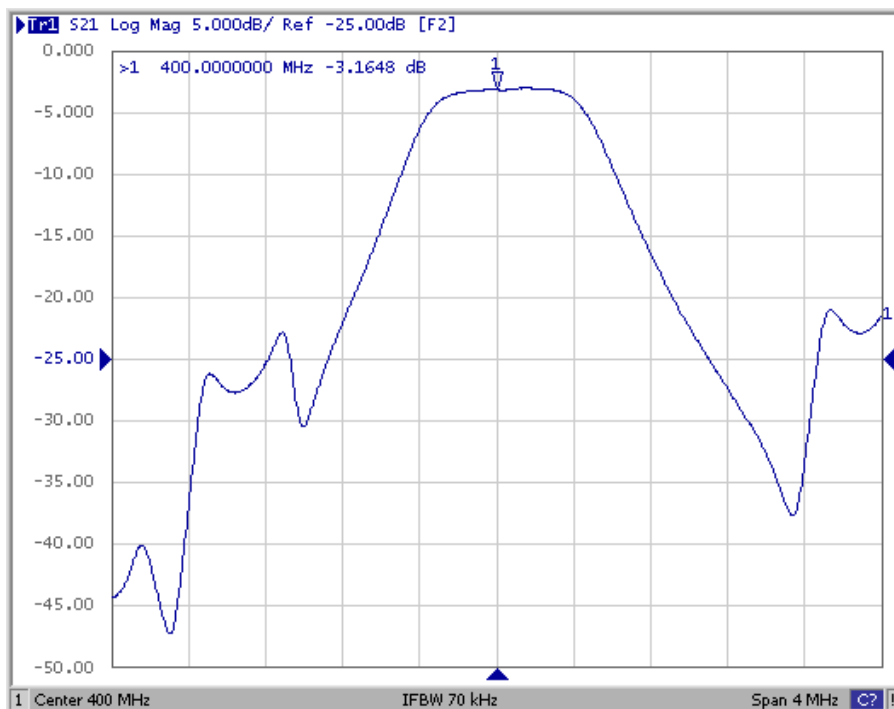
**Model: TA0971A**  
**Rev No: 1**

**C. FREQUENCY CHARACTERISTICS:**

1. Wide band Response: (span 100MHz)



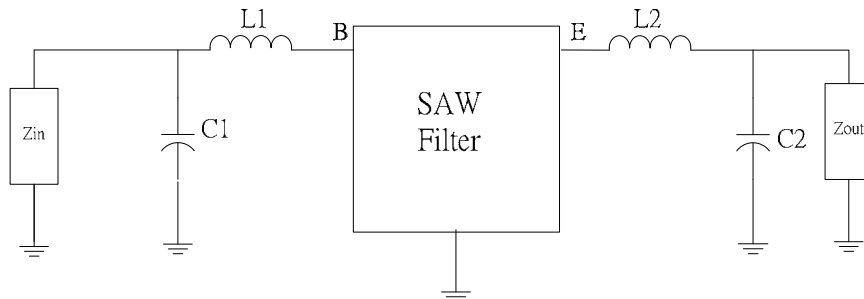
2. Pass band Response: (span 4MHz)



**SAW Filter 400.0MHz**  
**Part No: MP03754**

**Model: TA0971A**  
**Rev No: 1**

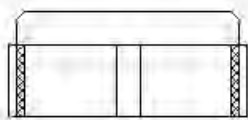
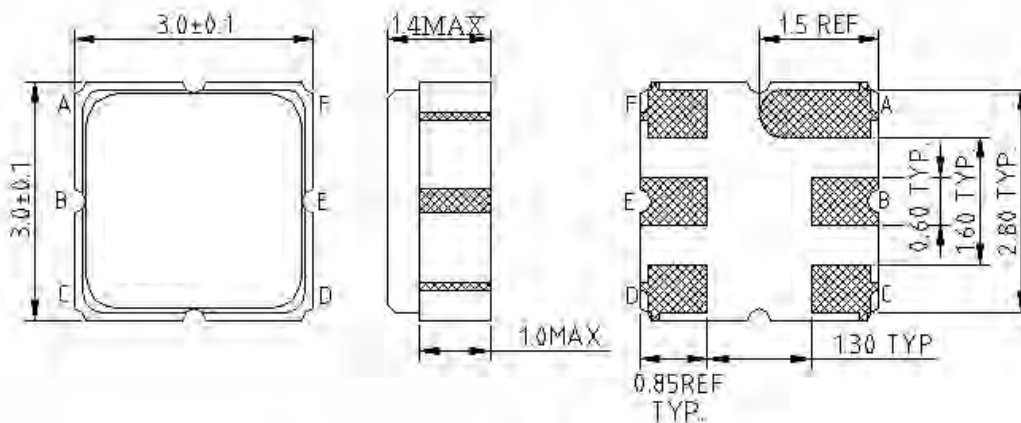
**D. MEASUREMENT CIRCUIT:**



$$Z_{IN} = Z_{OUT} = 50\Omega$$

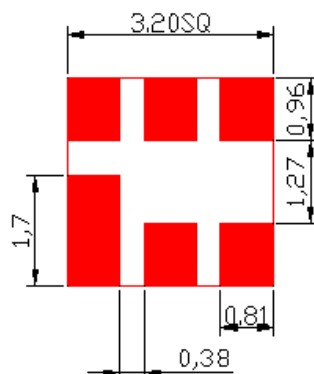
$$L1 = L2 = 68\text{nH}, C1 = C2 = 6.8\text{pF}$$

**E. OUTLINE DRAWING:**



B: Input  
 E: Output  
 A, C, D, F: Ground  
 Unit: mm

**F. PCB FOOTPRINT:**

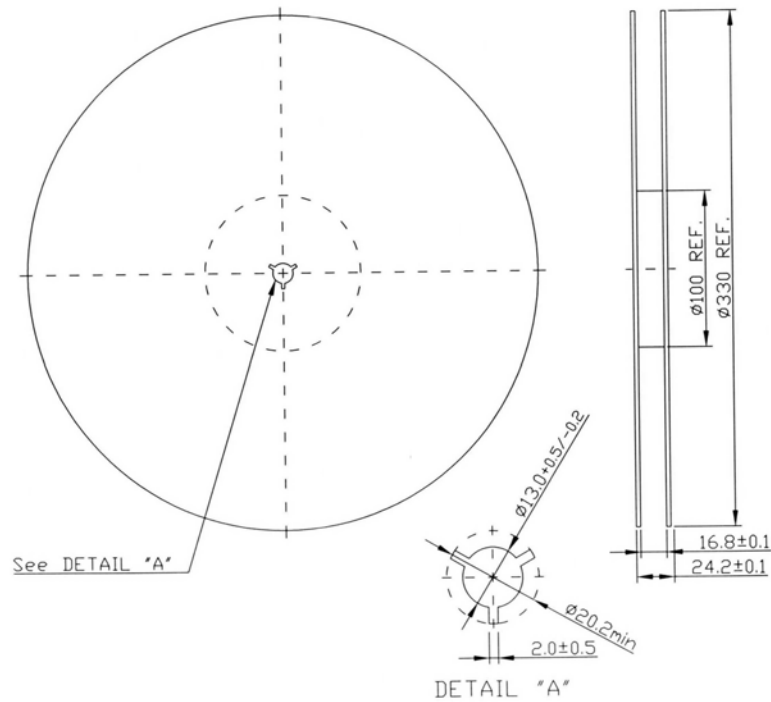


**SAW Filter 400.0MHz**  
**Part No: MP03754**

**Model: TA0971A**  
**Rev No: 1**

**G. PACKING:**

**1. REEL DIMENSION**



**2. TAPE DIMENSION**

