

**SAW Filter 1550MHz**  
**Part No: MP03269**

**Model: TA1045A**  
**Rev No: 2**

**A. MAXIMUM RATING:**

1. Input Power Level: 10dBm
2. DC voltage: 3V
3. Operating Temperature: -40°C to 85°C
4. Storage Temperature: -50°C to +95°C

**B. CHARACTERISTICS:**

Item	Unit	Min.	Typ.	Max.	Note
Center frequency Fc	MHz	-	1550	-	-
Bandwidth at -2dB	MHz	60	75	-	-
Insertion loss (1520 ~ 1580MHz) IL	dB	-	3.6	5	-
Amplitude ripple (1520 ~ 1580MHz)	dB	-	1.3	2	-
VSWR (1520 ~ 1580MHz)	-	-	1.8	2.5	-
CMDR (1520 ~ 1580MHz)	dB	25	32	-	-
Phase error (1520 ~ 1580MHz)	deg	-	2.5	5	-
Attenuation (reference from 0dB) (1)					
10 ~ 1440MHz	dB	40	50	-	-
1670 ~ 3300MHz	dB	40	45	-	-
3300 ~ 6000MHz	dB	16	21	-	-

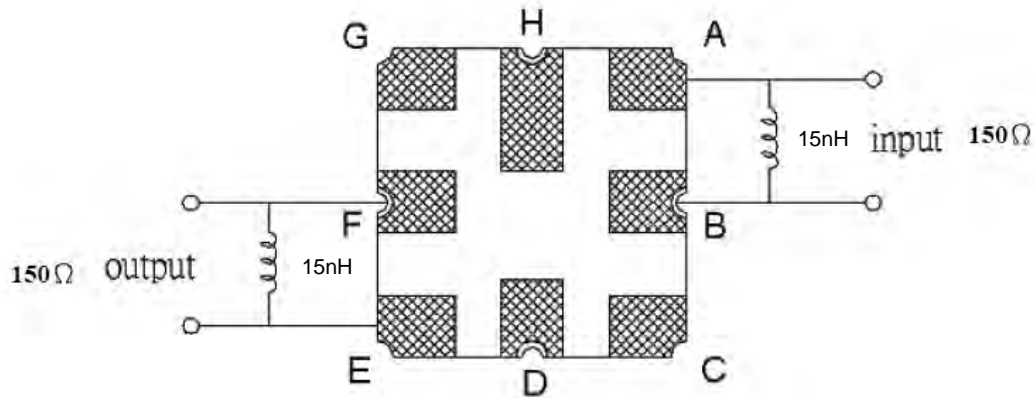
Notes:

1. The amplitude reference is insertion loss at Fc.
2. The amplitude ripple is defined as the max level - min level over any 36MHz block of the given bandwidth.
3. The phase error is measured over any 36MHz block of the given bandwidth.

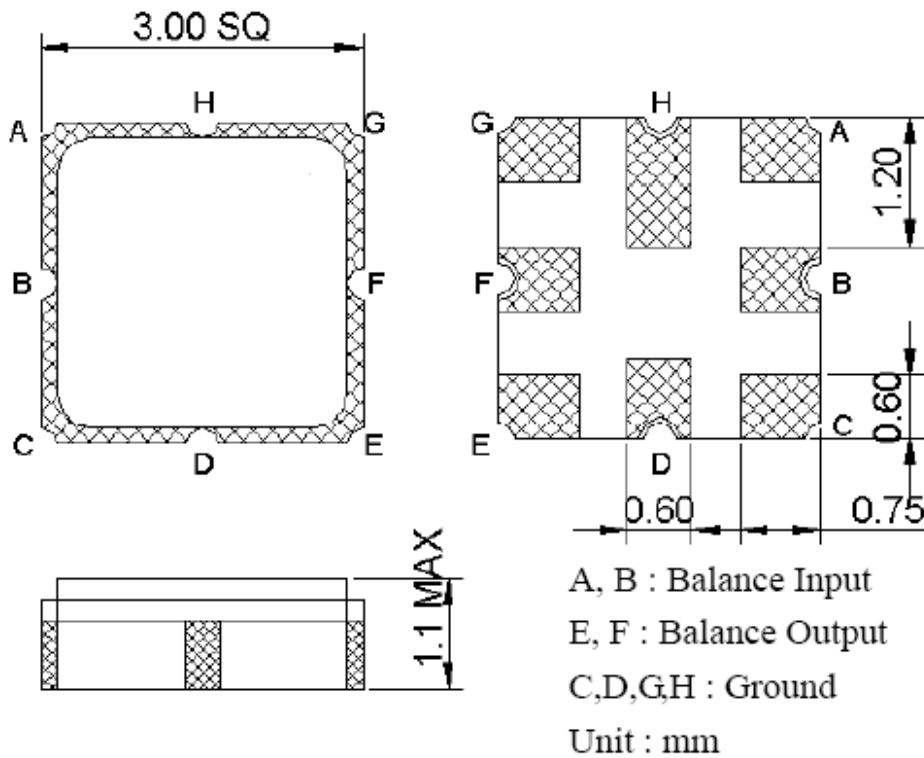
**SAW Filter 1550MHz**  
**Part No: MP03269**

**Model: TA1045A**  
**Rev No: 2**

**C. MEASUREMENT CIRCUIT:**



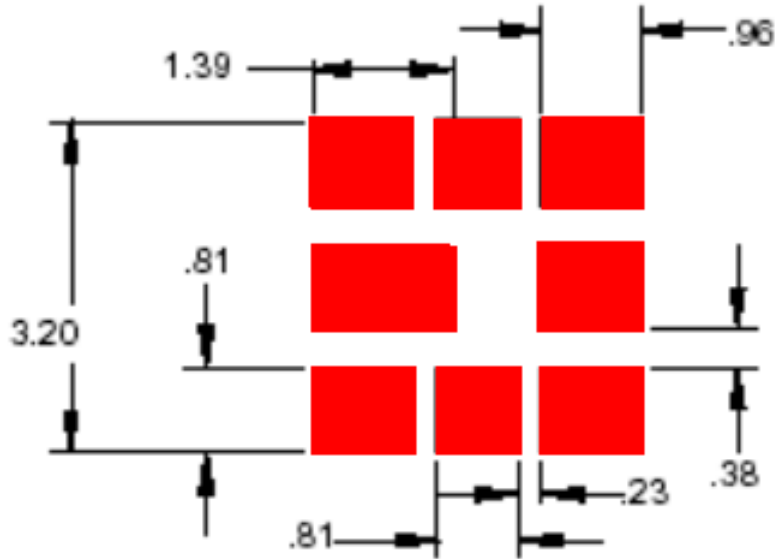
**D. OUTLINE DRAWING:**



**SAW Filter 1550MHz**  
**Part No: MP03269**

**Model: TA1045A**  
**Rev No: 2**

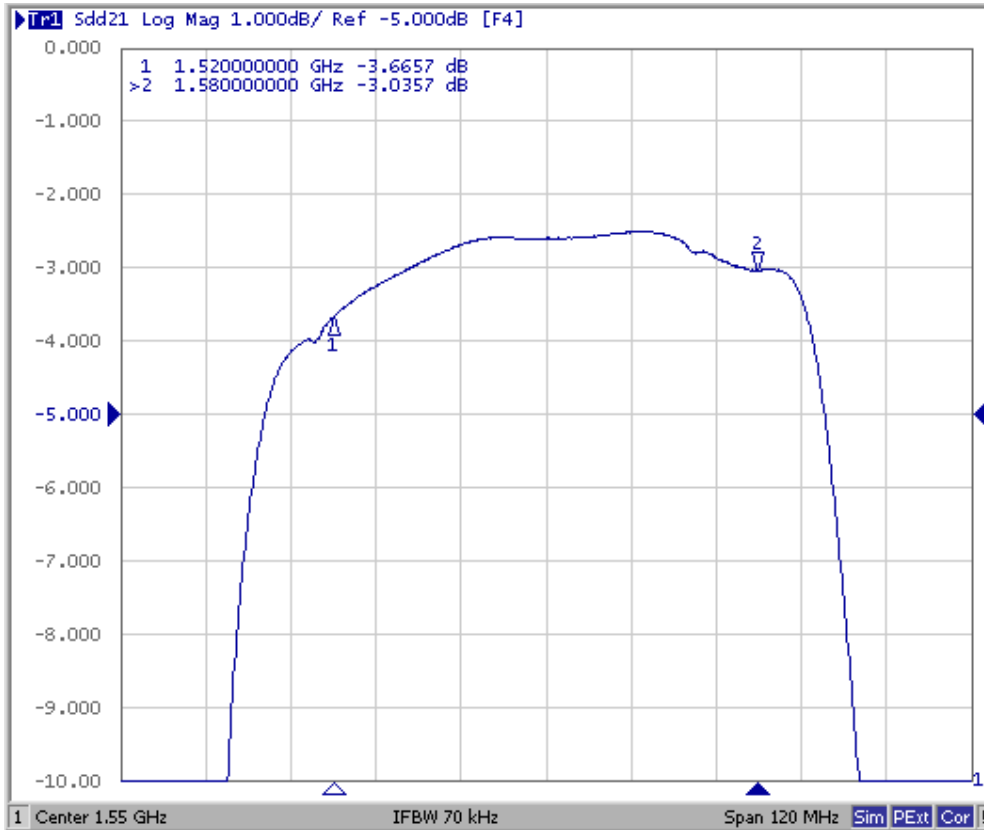
**E. PCB FOOTPRINT:**



**SAW Filter 1550MHz**  
**Part No: MP03269**

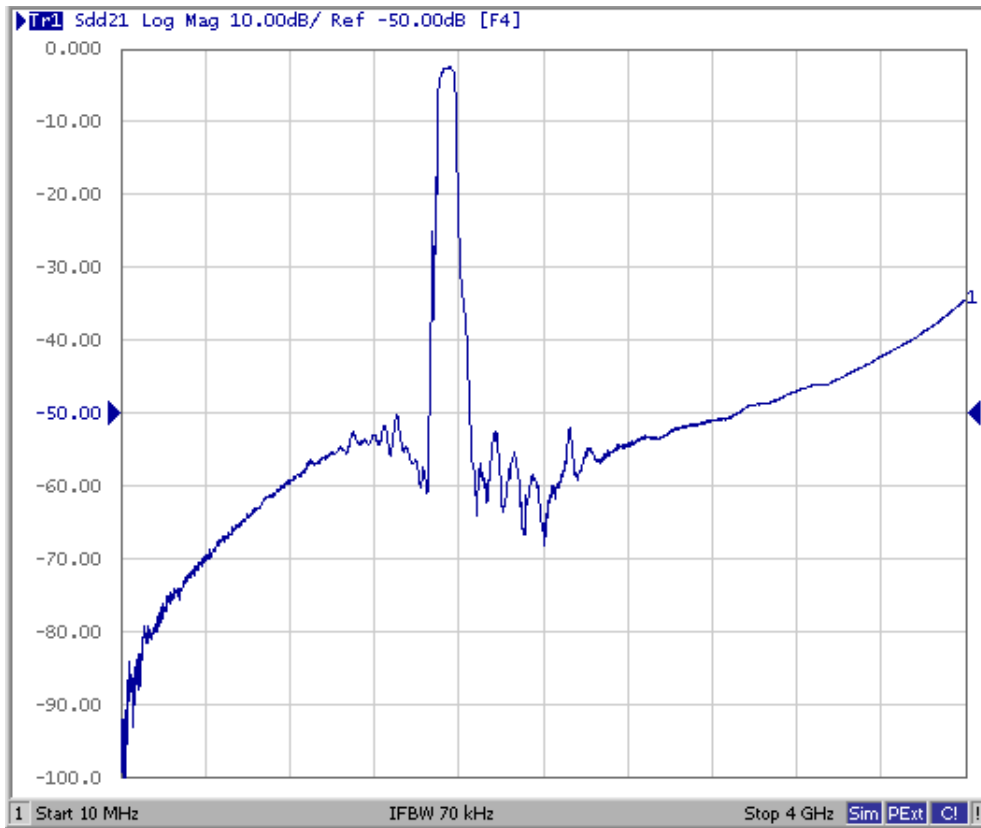
**Model: TA1045A**  
**Rev No: 2**

**F. FREQUENCY CHARACTERISTICS:**



**SAW Filter 1550MHz**  
**Part No: MP03269**

**Model: TA1045A**  
**Rev No: 2**

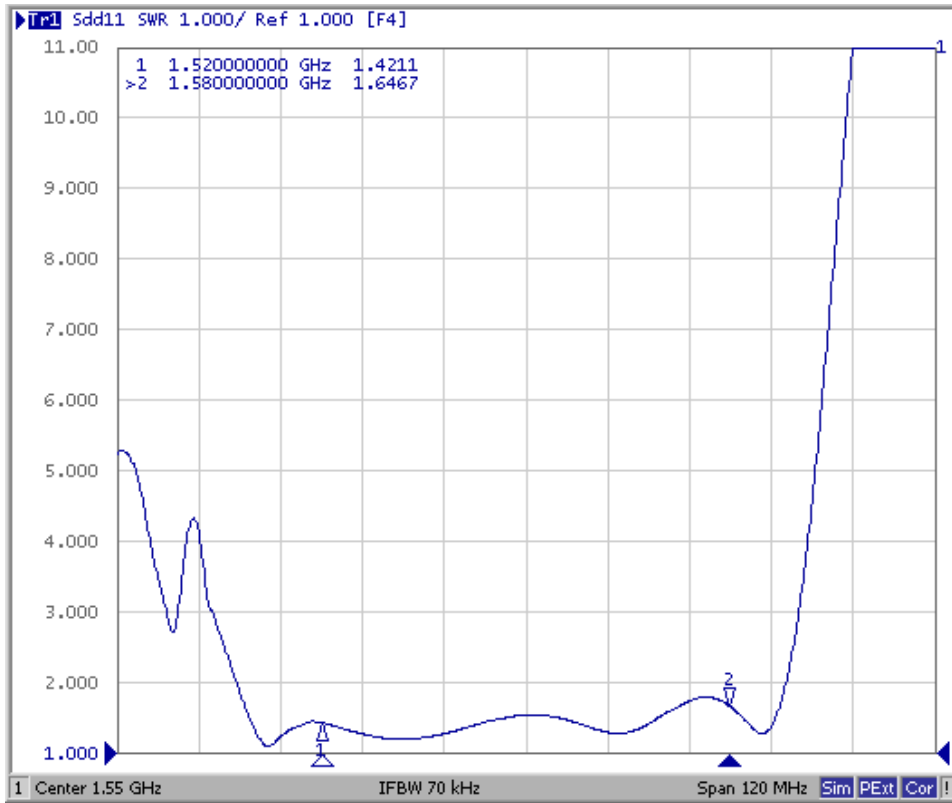


**SAW Filter 1550MHz**  
**Part No: MP03269**

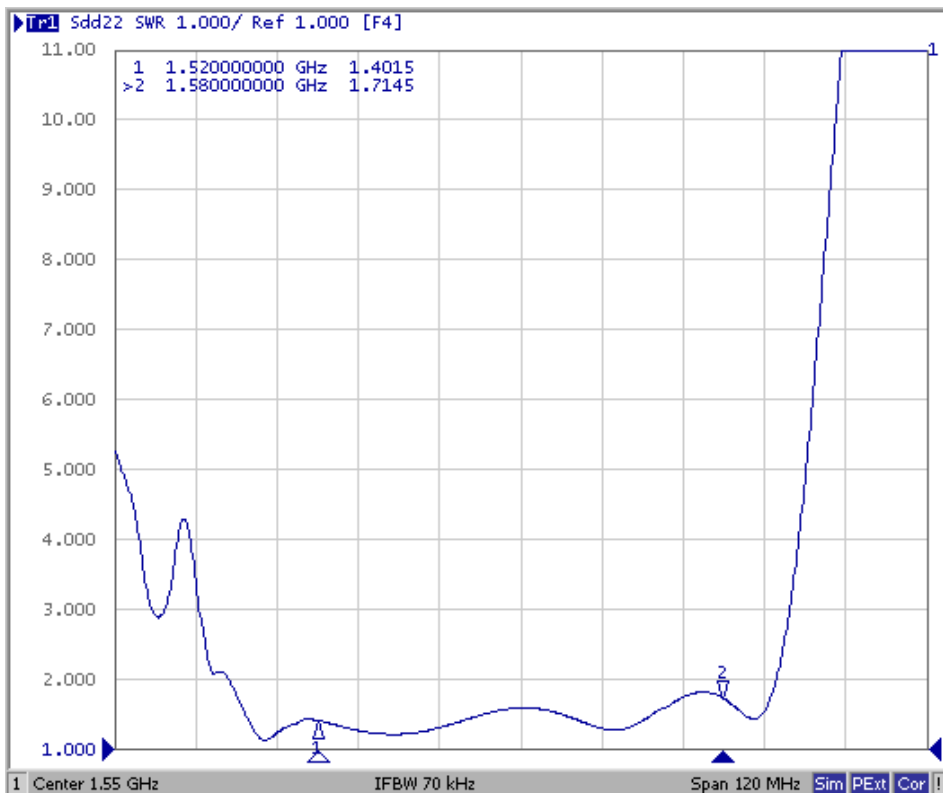
**Model: TA1045A**  
**Rev No: 2**

Reflection Functions

S11



S22

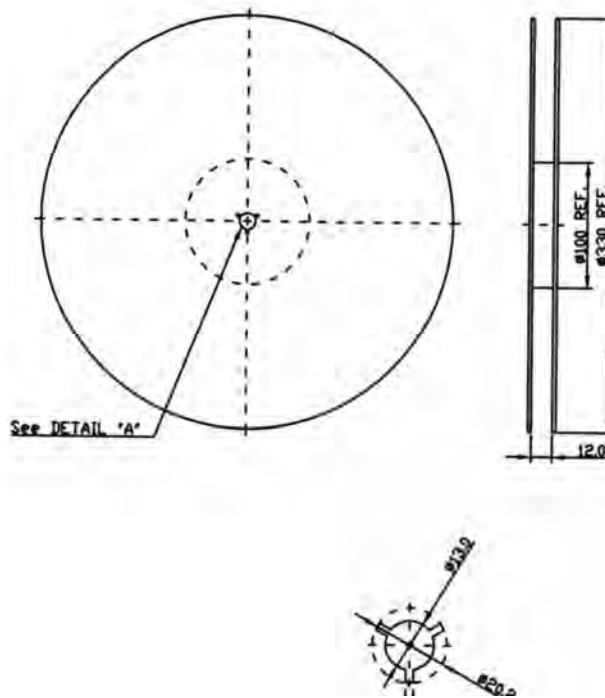


**SAW Filter 1550MHz**  
**Part No: MP03269**

**Model: TA1045A**  
**Rev No: 2**

**G. PACKING:**

1. REEL DIMENSION



2. TAPE DIMENSION

