

SAW Filter 1575MHz
Part No: MP03231

Model: TA1021A
Rev No: 1

A. MAXIMUM RATING:

1. Input Power Level: +10dBm
2. DC Voltage: 3V
3. Operating Temperature: -40°C to +85°C
4. Storage Temperature: -40°C to +85°C

B. ELECTRICAL CHARACTERISTICS:

Terminating source impedance (Unbalanced): $Z_S = 50\Omega$

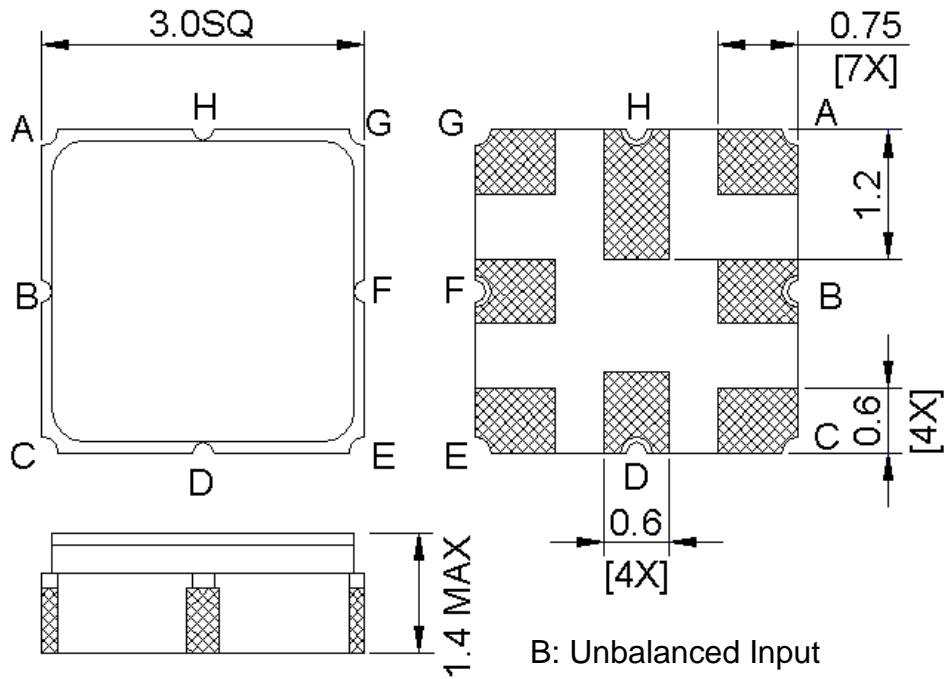
Terminating load impedance (Balanced): $Z_L = 50\Omega$

Item	Unit	Min.	Typ.	Max.	Note
Center Frequency F_c	MHz	-	1575	-	-
Insertion Loss (1565 ~ 1585MHz) IL	dB	-	2.7	4.5	-
Amplitude Ripple (1565 ~ 1585MHz)	dB	-	0.4	1.5	-
Attenuation (Reference level from 0dB)					
0 ~ 1000MHz	dB	32	34	-	-
1000 ~ 1435MHz	dB	32	34.5	-	-
1435 ~ 1525MHz	dB	22	24	-	-
1525 ~ 1540MHz	dB	7	21	-	-
1610 ~ 1625MHz	dB	7	16	-	-
1625 ~ 1715MHz	dB	22	25.5	-	-
1715 ~ 1785MHz	dB	34	39	-	-
1785 ~ 2100MHz	dB	30	34	-	-
2100 ~ 2200MHz	dB	25	26.5	-	-
2200 ~ 2500MHz	dB	27	34	-	-
2500 ~ 4000MHz	dB	18	32	-	-

SAW Filter 1575MHz
Part No: MP03231

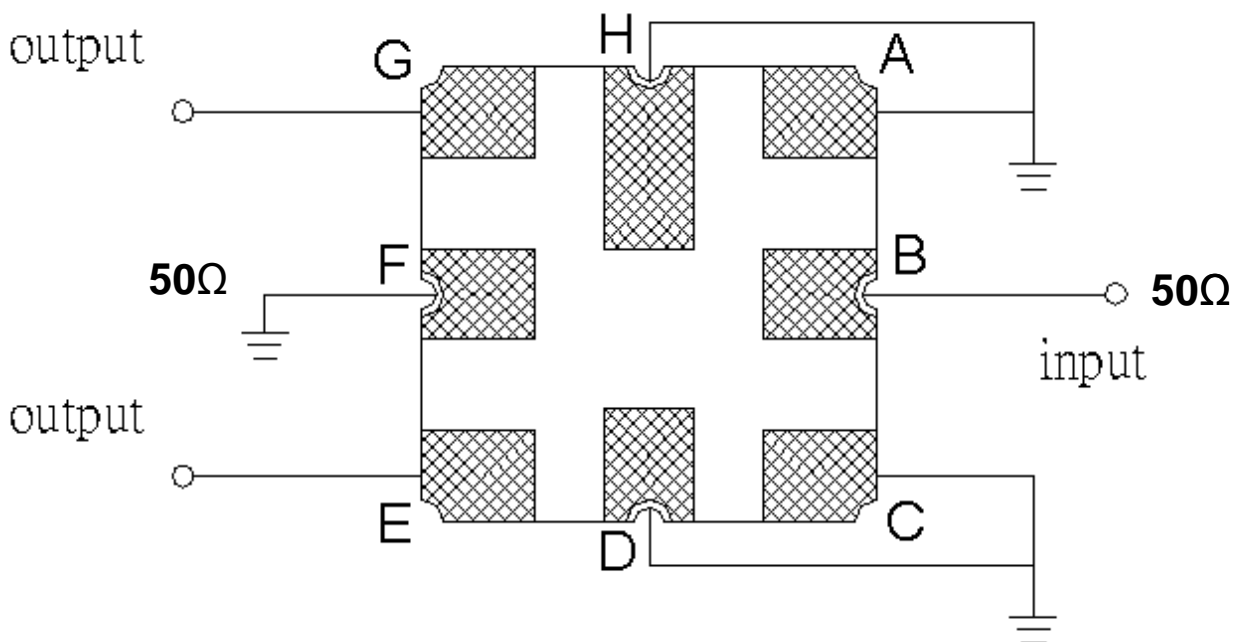
Model: TA1021A
Rev No: 1

C. OUTLINE DRAWING:



B: Unbalanced Input
 E, G: Balanced Output
 A, C, D, F, H: Ground
 Unit: mm

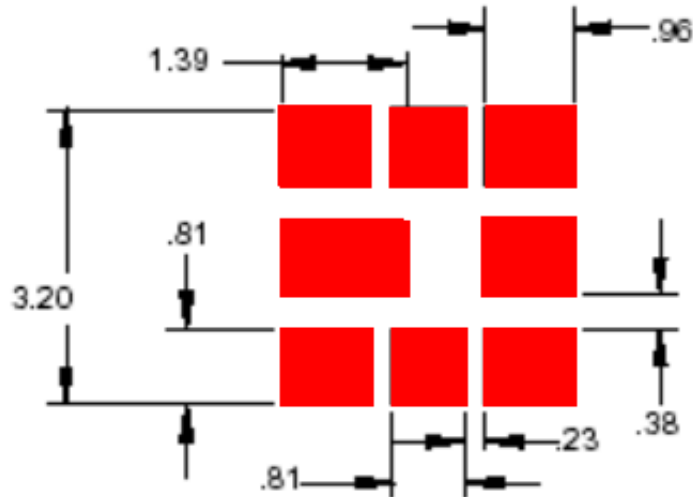
D. MEASUREMENT CIRCUIT:



SAW Filter 1575MHz
Part No: MP03231

Model: TA1021A
Rev No: 1

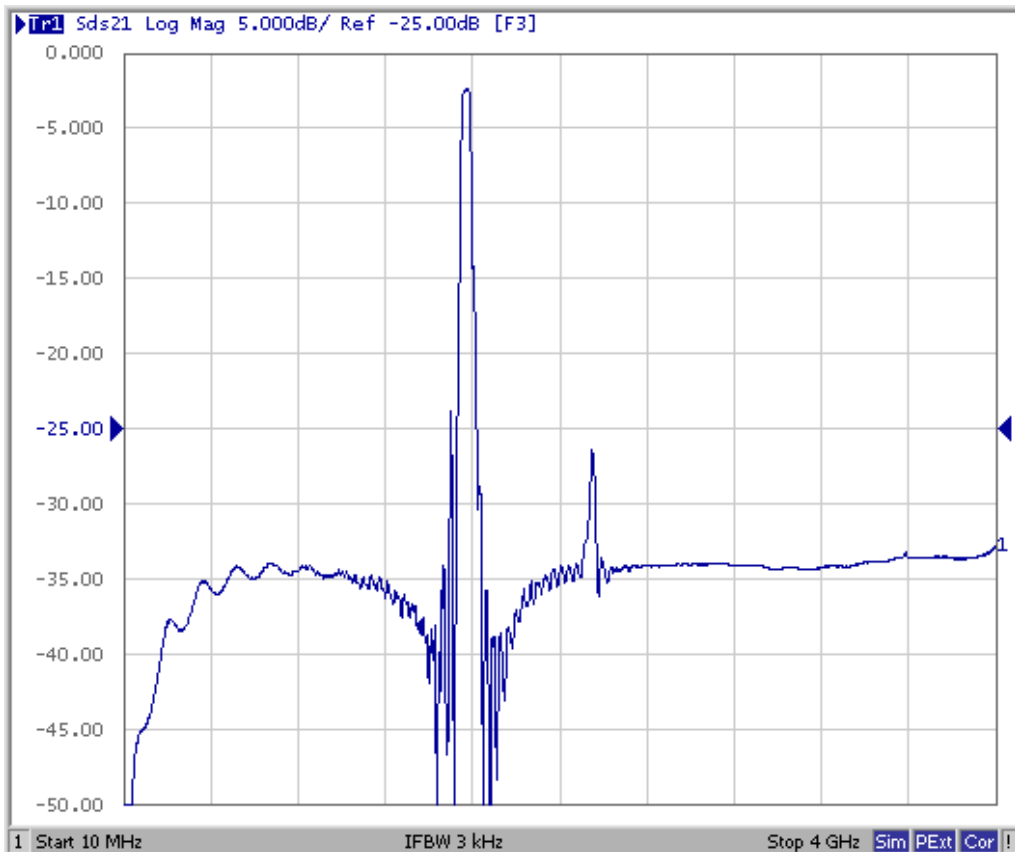
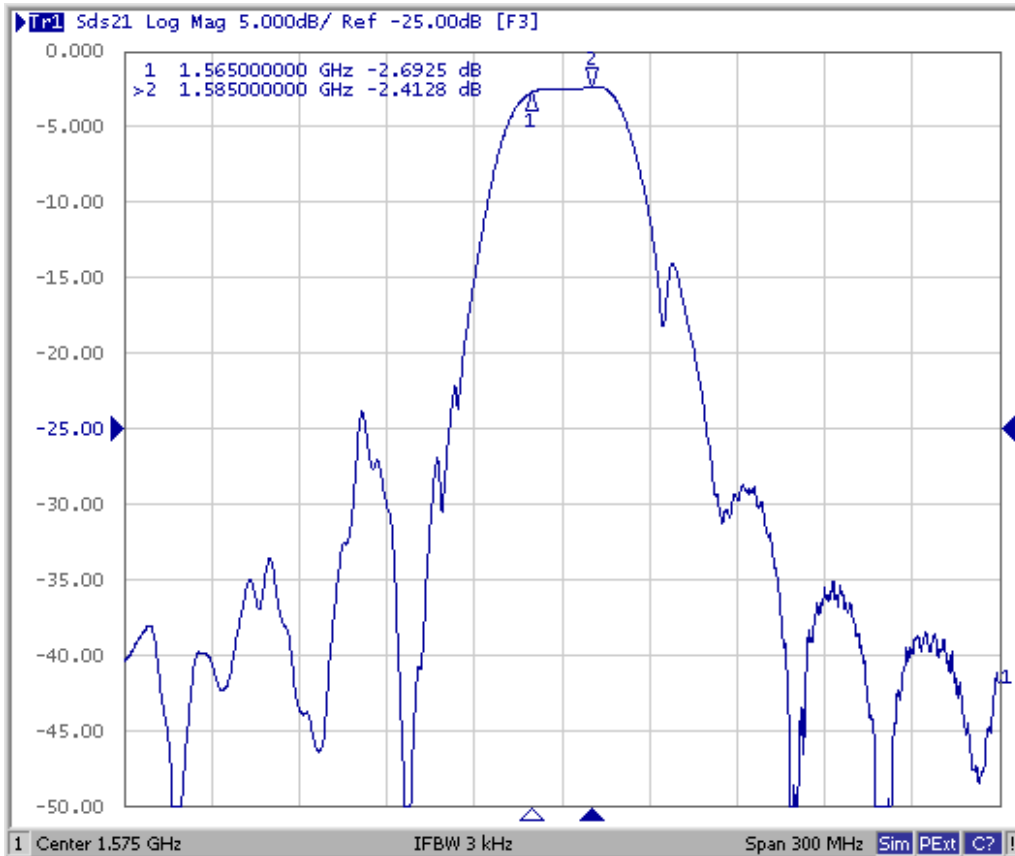
E. PCB FOOTPRINT:



SAW Filter 1575MHz
Part No: MP03231

Model: TA1021A
Rev No: 1

F. FREQUENCY CHARACTERISTICS:



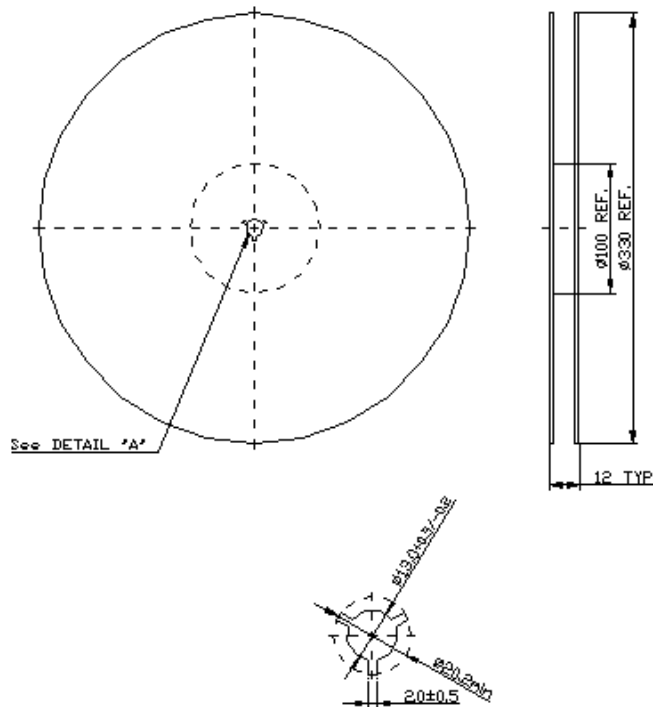
SAW Filter 1575MHz
Part No: MP03231

Model: TA1021A
Rev No: 1

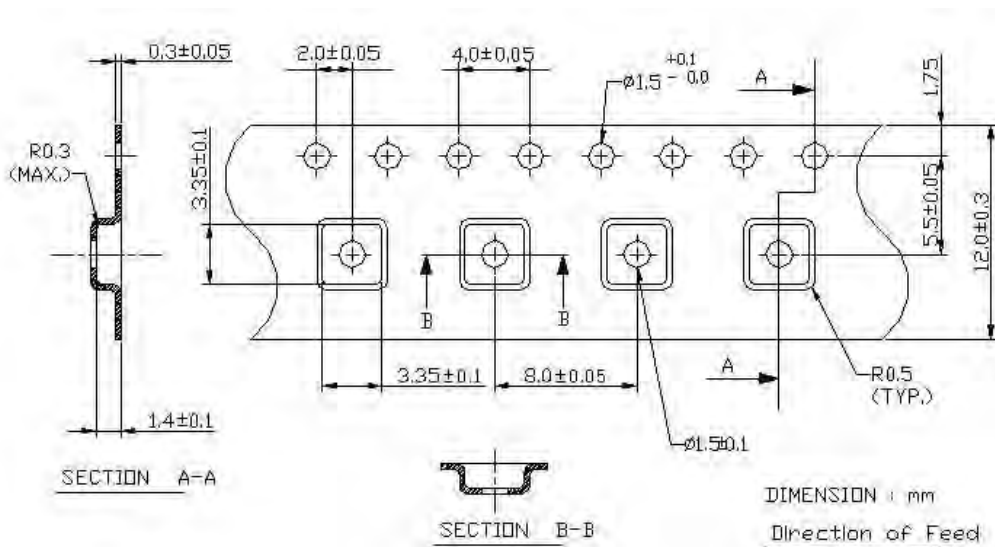
G. PACKING:

1. REEL DIMENSION

(Reel Count: 7" = 1000; 13" = 3000)



2. TAPE DIMENSION



SAW Filter 1575MHz
Part No: MP03231

Model: TA1021A
Rev No: 1

H. RECOMMENDED REFLOW PROFILE:

