

**SAW Filter 1420MHz**  
**Part No: MP03039**

**Model: TA1077A**  
**Rev No: 1**

**A. MAXIMUM RATING:**

1. Input Power Level: 10dBm
2. DC Voltage: 3V
3. Operating Temperature: -40°C to +85°C
4. Storage Temperature: -50°C to +95°C

**B. ELECTRICAL CHARACTERISTICS:**

Terminating source impedance (balanced):  $Z_S = 200\Omega // 22nH$

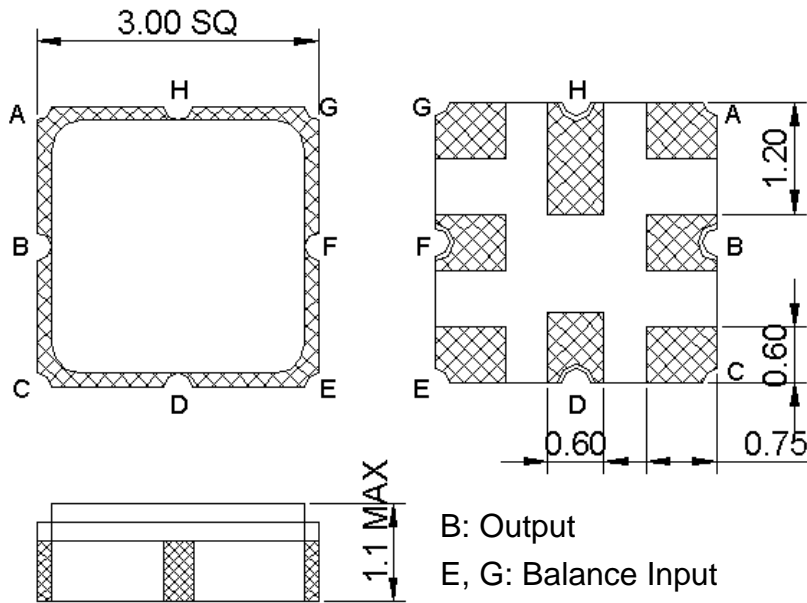
Terminating load impedance (single ended):  $Z_L = 50\Omega$

Item	Unit	Min.	Typ.	Max.	Note
Center Frequency Fc	MHz	-	1420	-	-
Bandwidth at -2dB	MHz	60	72	-	-
Insertion Loss in 1390 ~ 1450MHz	dB	-	3.5	5	-
Amplitude ripple (1390 MHz ~ 1450MHz)	dB	-	1.5	2	-
I/O VSWR (1390 MHz ~ 1450MHz)		-	2	2.5	-
Attenuation (reference level from 0dB)					
50 ~ 1320MHz	dB	42	62	-	-
1530 ~ 3000MHz	dB	42	52	-	-
3000 ~ 4000MHz	dB	30	38	-	-
4000 ~ 6000MHz	dB	15	27	-	-

**SAW Filter 1420MHz**  
**Part No: MP03039**

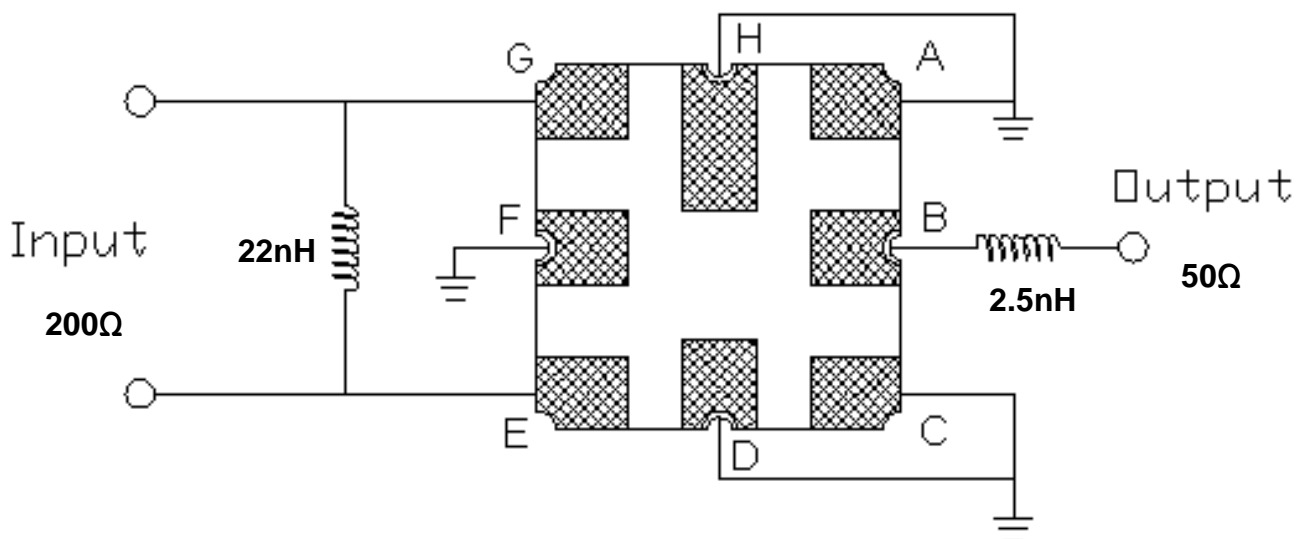
**Model: TA1077A**  
**Rev No: 1**

**C. OUTLINE DRAWING:**



B: Output  
 E, G: Balance Input  
 A, C, D, F, H: Ground  
 Unit: mm

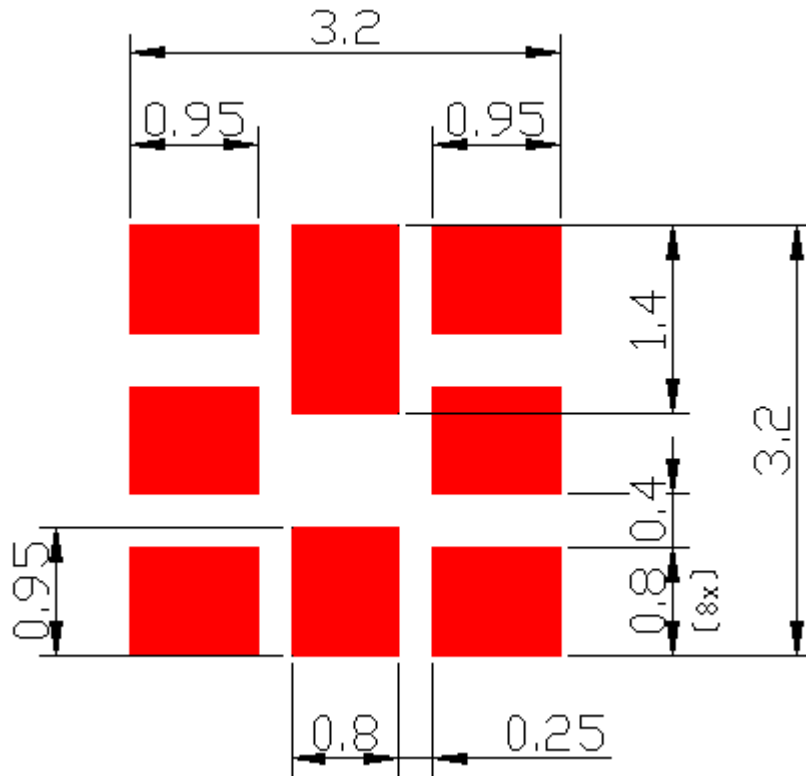
**D. MEASUREMENT CIRCUIT:**



**SAW Filter 1420MHz**  
**Part No: MP03039**

**Model: TA1077A**  
**Rev No: 1**

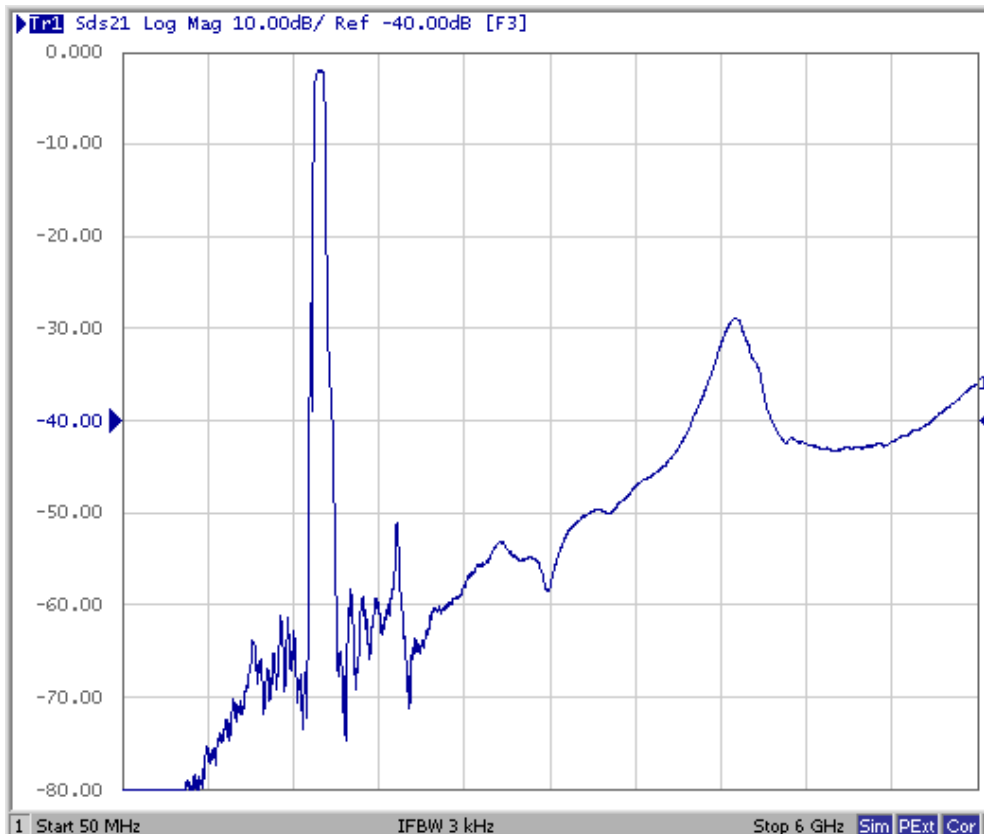
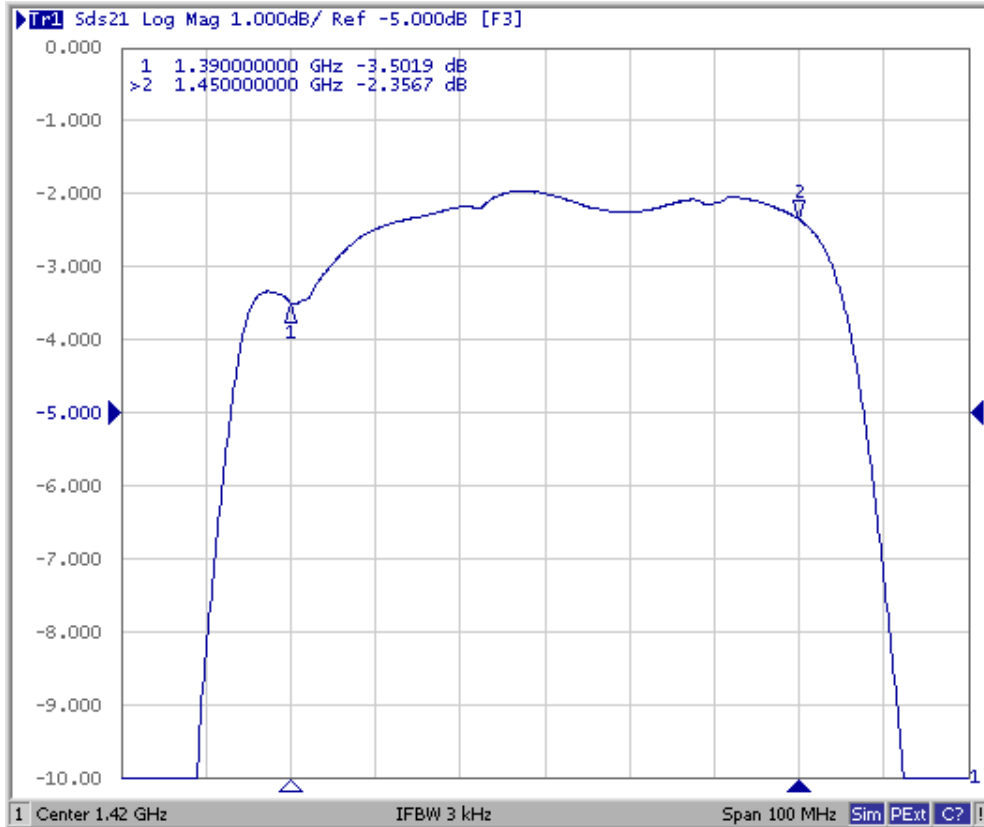
**E. PCB FOOTPRINT:**



**SAW Filter 1420MHz**  
**Part No: MP03039**

**Model: TA1077A**  
**Rev No: 1**

**F. FREQUENCY CHARACTERISTICS:**

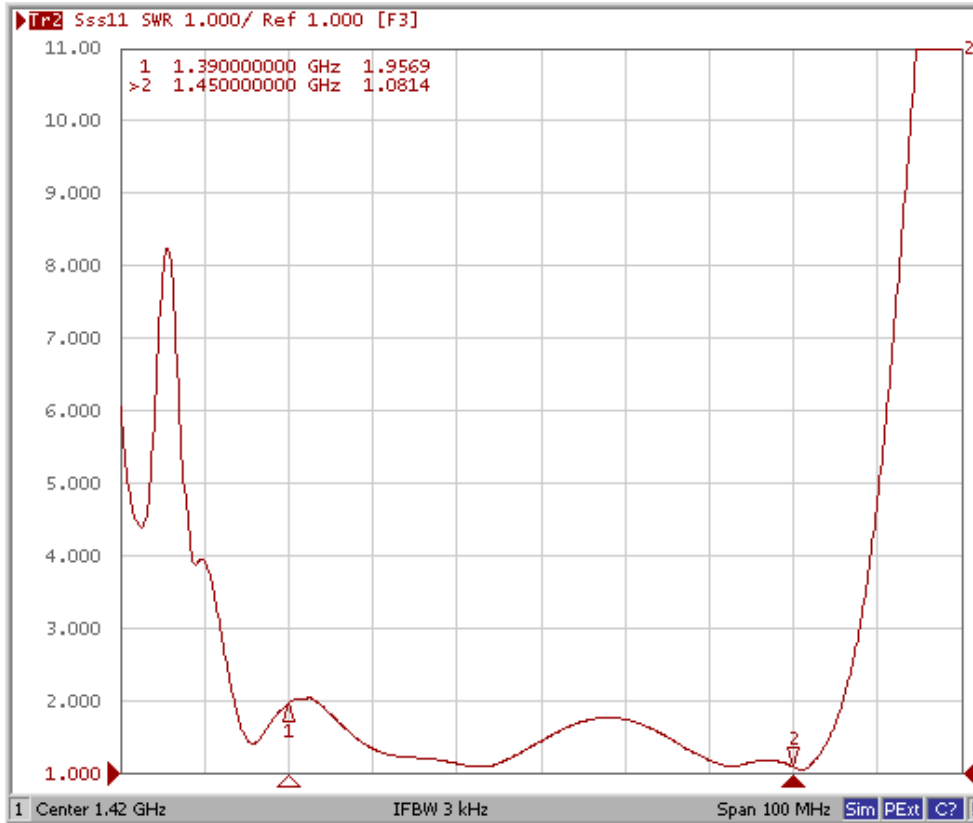


**SAW Filter 1420MHz**  
**Part No: MP03039**

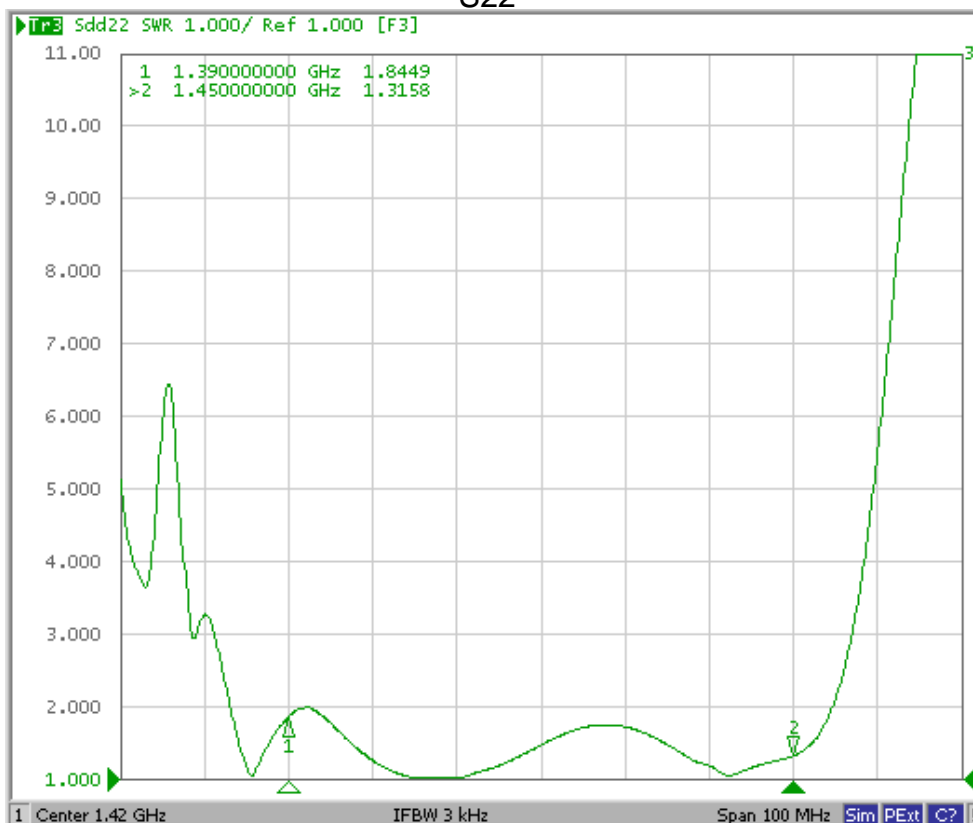
**Model: TA1077A**  
**Rev No: 1**

Reflection Functions

S11



S22



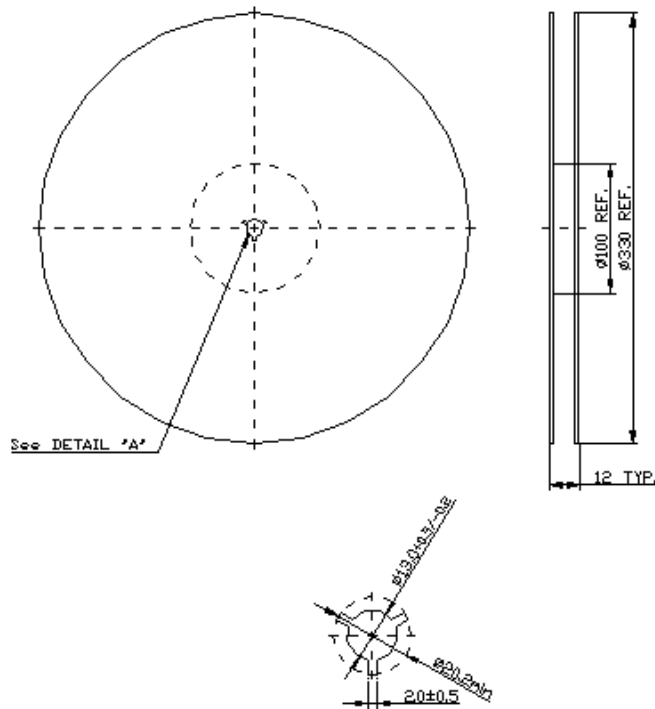
**SAW Filter 1420MHz**  
**Part No: MP03039**

**Model: TA1077A**  
**Rev No: 1**

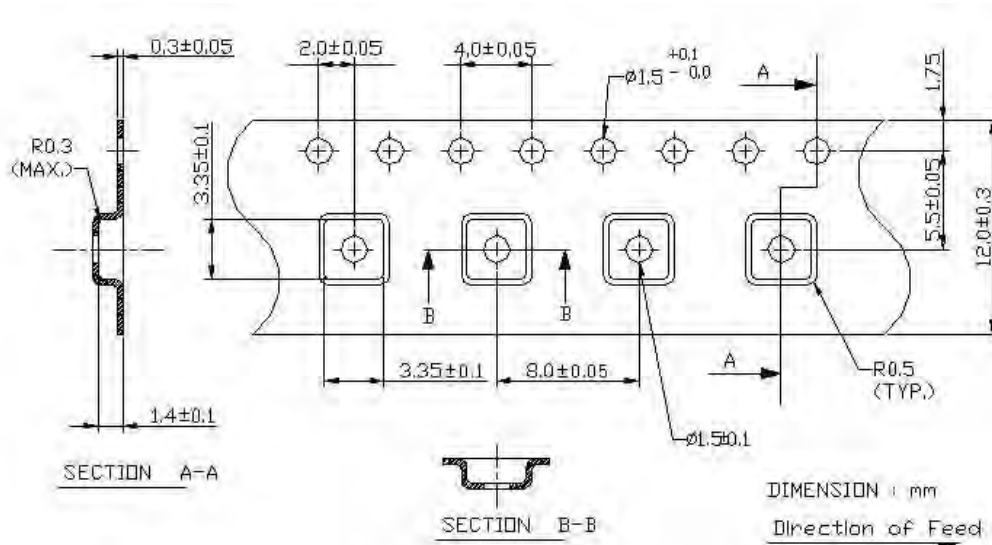
**G. PACKING:**

**1. REEL DIMENSION**

(Reel Count: 7" = 1000; 13" = 3000)



**2. TAPE DIMENSION**



**SAW Filter 1420MHz**  
**Part No: MP03039**

**Model: TA1077A**  
**Rev No: 1**

**H. RECOMMENDED REFLOW PROFILE:**

