

SAW Filter 1680.0MHz
Part No: MP02132

Model: TA0891A
Rev No: 2

A. MAXIMUM RATING:

1. Input Power Level: 10dBm
2. DC Voltage: 3V
3. Operating Temperature: -40°C to +85°C
4. Storage Temperature: -50°C to +95°C

B. ELECTRICAL CHARACTERISTICS:

1. Terminating source impedance (differential): $Z_S = 150\Omega // 15nH$
2. Terminating load impedance (differential): $Z_L = 150 \Omega // 15nH$

Item	Unit	Min.	Typ.	Max.	Note
Center Frequency Fc	MHz	-	1680	-	-
Bandwidth at -2dB	MHz	60	76	-	-
Insertion Loss in 1650 ~ 1710MHz	dB	-	3.7	5	-
Amplitude ripple (1650MHz ~ 1710MHz)	dB	-	1.2	2	-
Phase error (1650MHz ~ 1710MHz) (3)	deg	-	2	5	-
I/O VSWR (1650MHz ~ 1710MHz)		-	1.5	2.5	-
CMDR (1650MHz ~ 1710MHz)	dB	25	30	-	-
Attenuation (1)					
50 ~ 1580MHz	dB	44	55	-	-
1800 ~ 3000MHz	dB	44	50	-	-
3000 ~ 4000MHz	dB	35	40	-	-
4000 ~ 6000MHz	dB	18	23	-	-

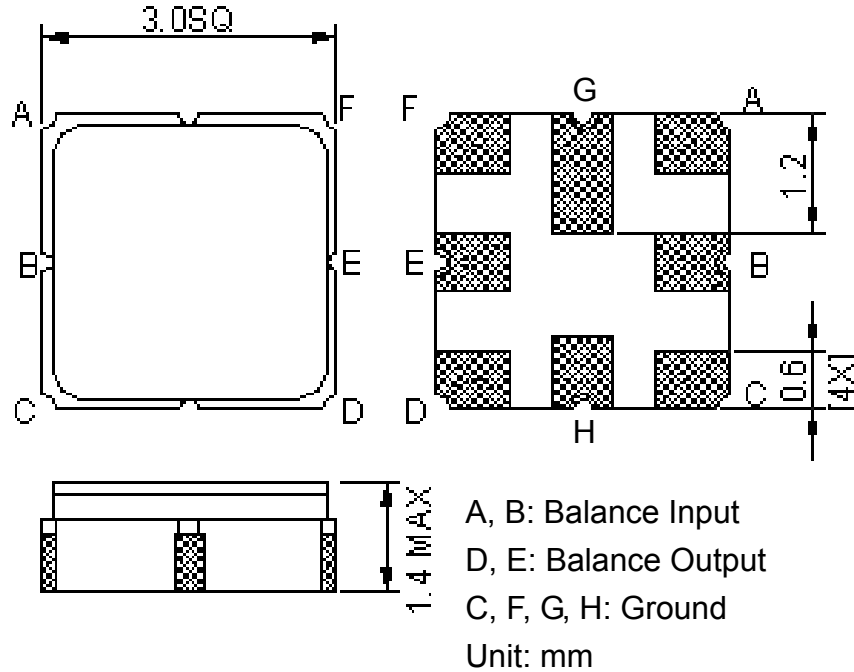
Notes:

1. The amplitude reference is insertion loss at Fc.
2. The amplitude ripple is defined as the max. level – min. level over any 36 MHz block of the given bandwidth.
3. The phase error is measured over any 36 MHz block of the given bandwidth.

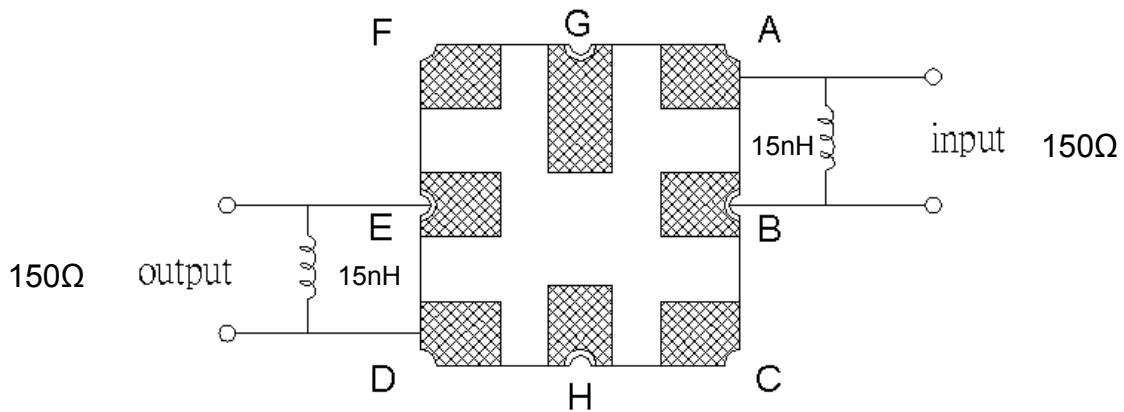
SAW Filter 1680.0MHz
Part No: MP02132

Model: TA0891A
Rev No: 2

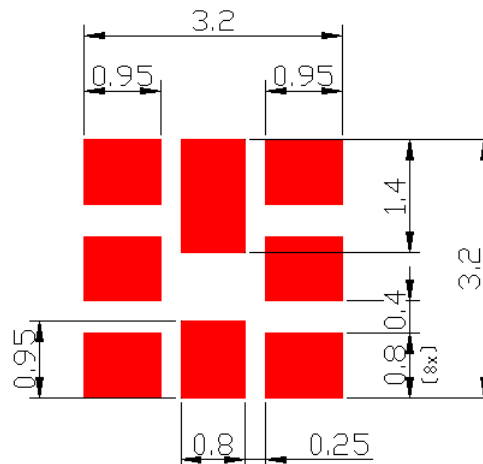
C. OUTLINE DRAWING:



D. MEASUREMENT CIRCUIT:



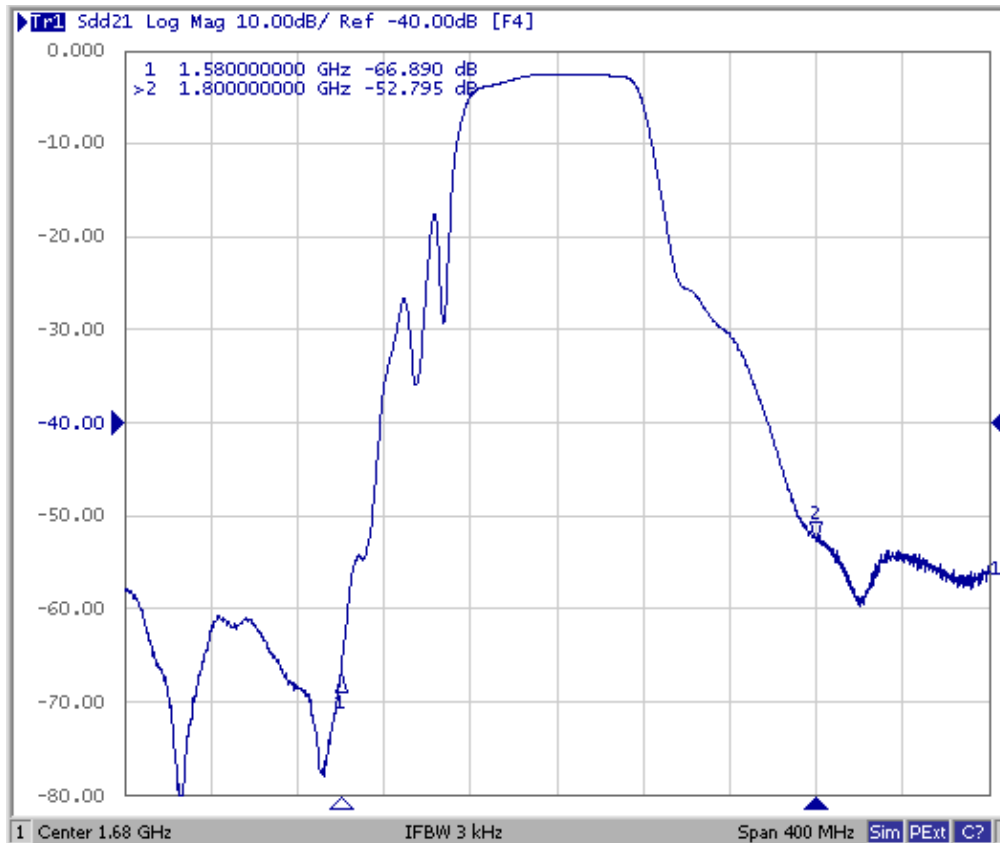
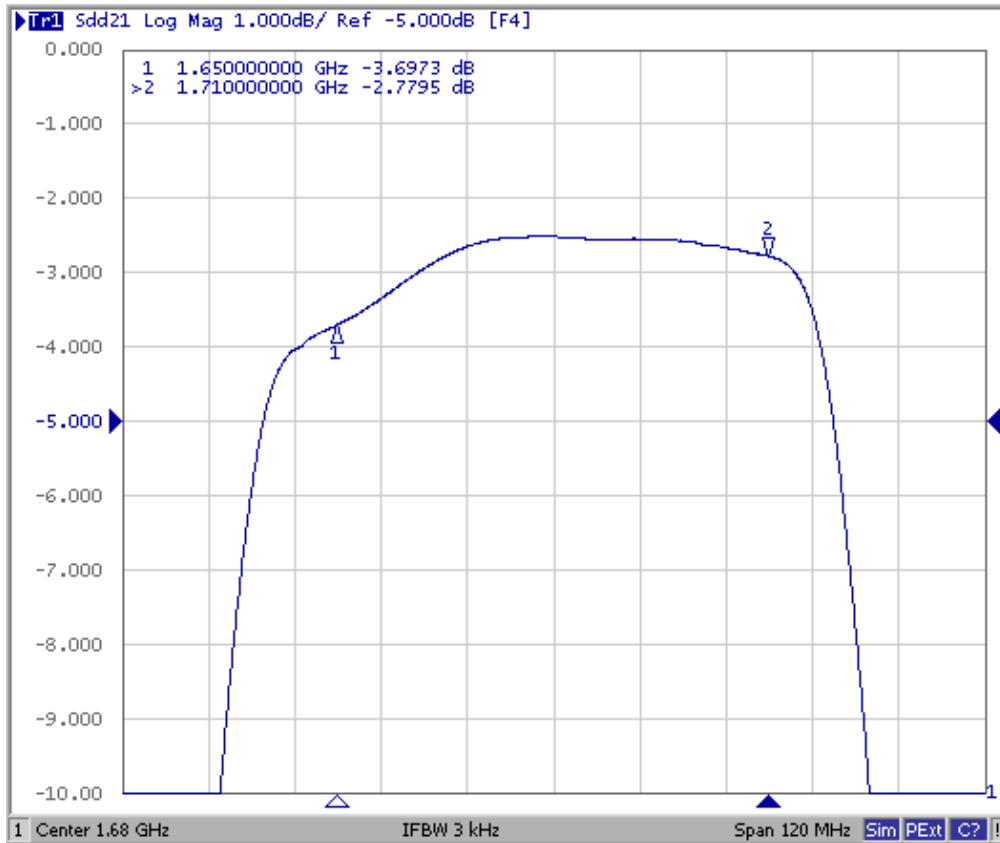
E. PCB FOOTPRINT:



SAW Filter 1680.0MHz
Part No: MP02132

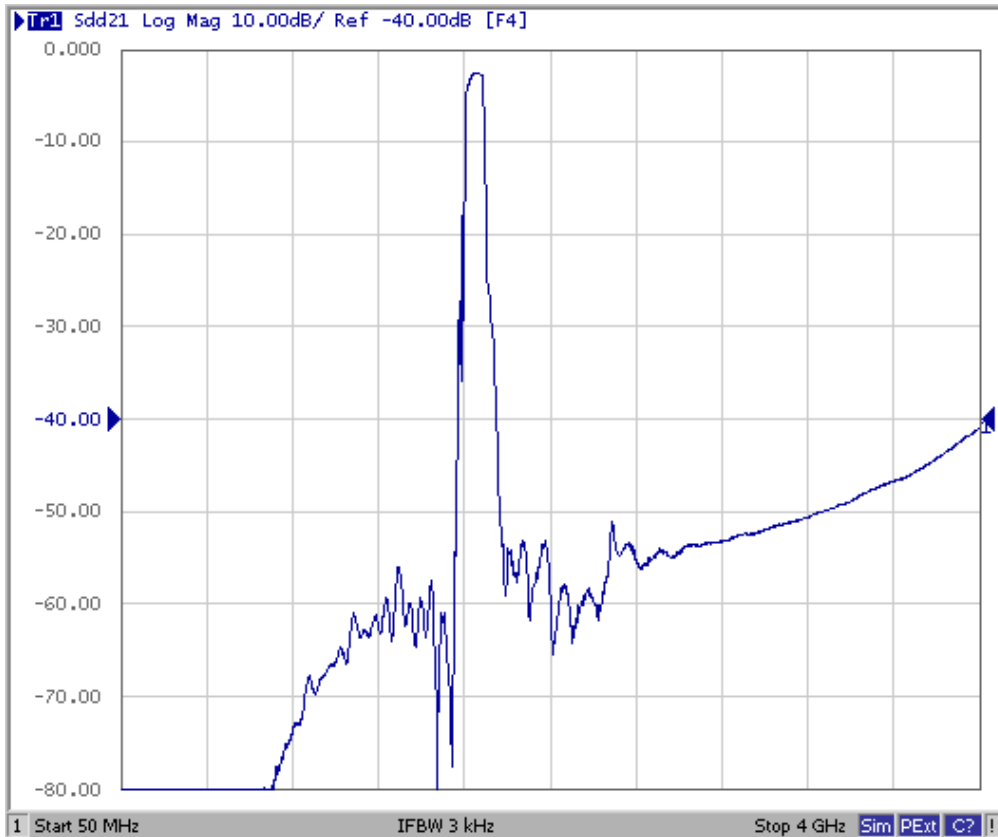
Model: TA0891A
Rev No: 2

F. FREQUENCY CHARACTERISTICS:



SAW Filter 1680.0MHz
Part No: MP02132

Model: TA0891A
Rev No: 2

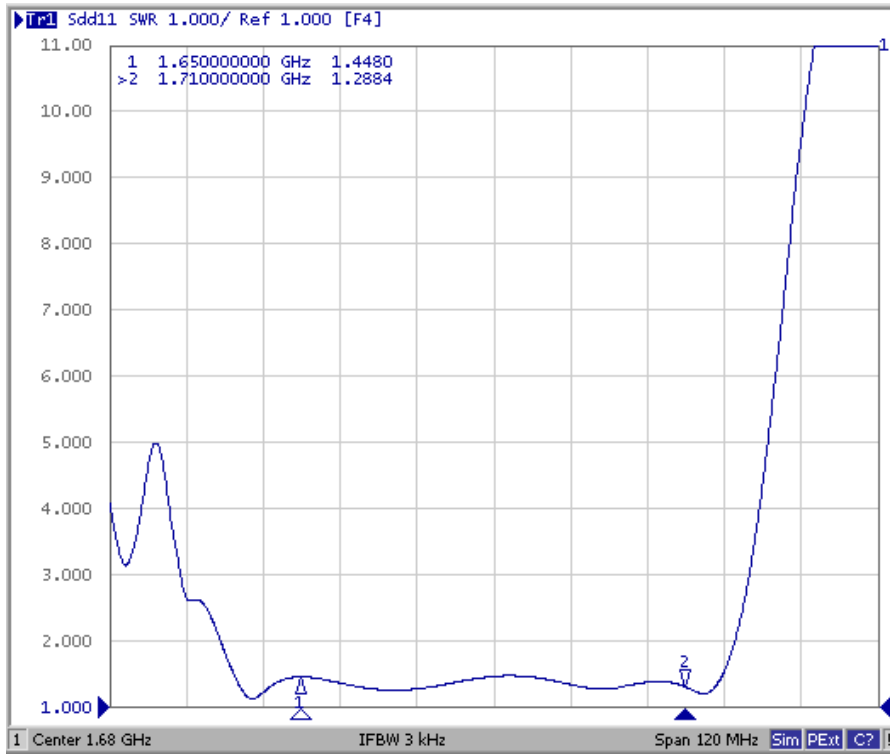


SAW Filter 1680.0MHz
Part No: MP02132

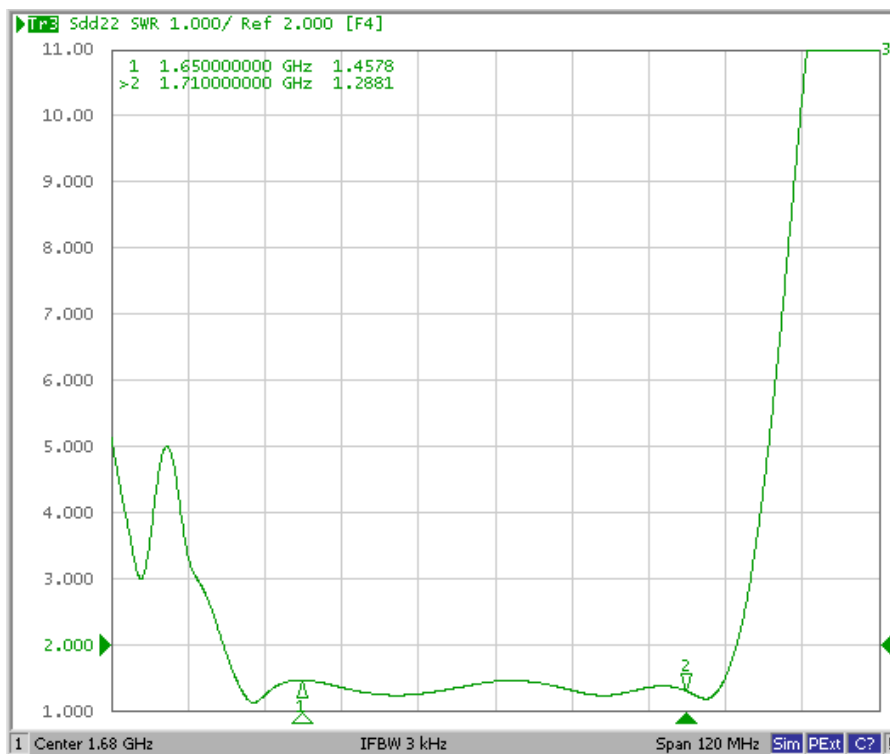
Model: TA0891A
Rev No: 2

Reflection Functions

S11



S22

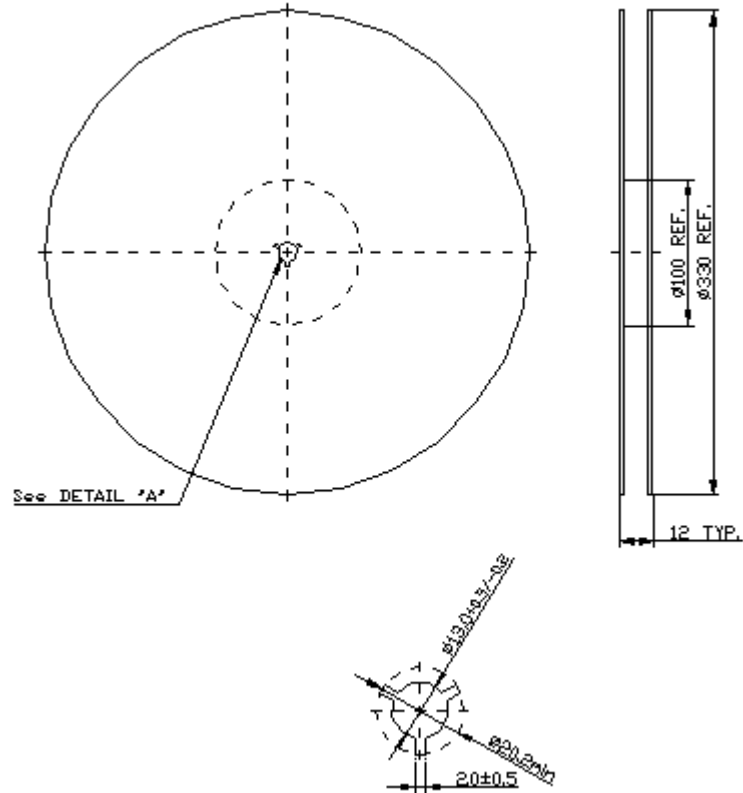


SAW Filter 1680.0MHz
Part No: MP02132

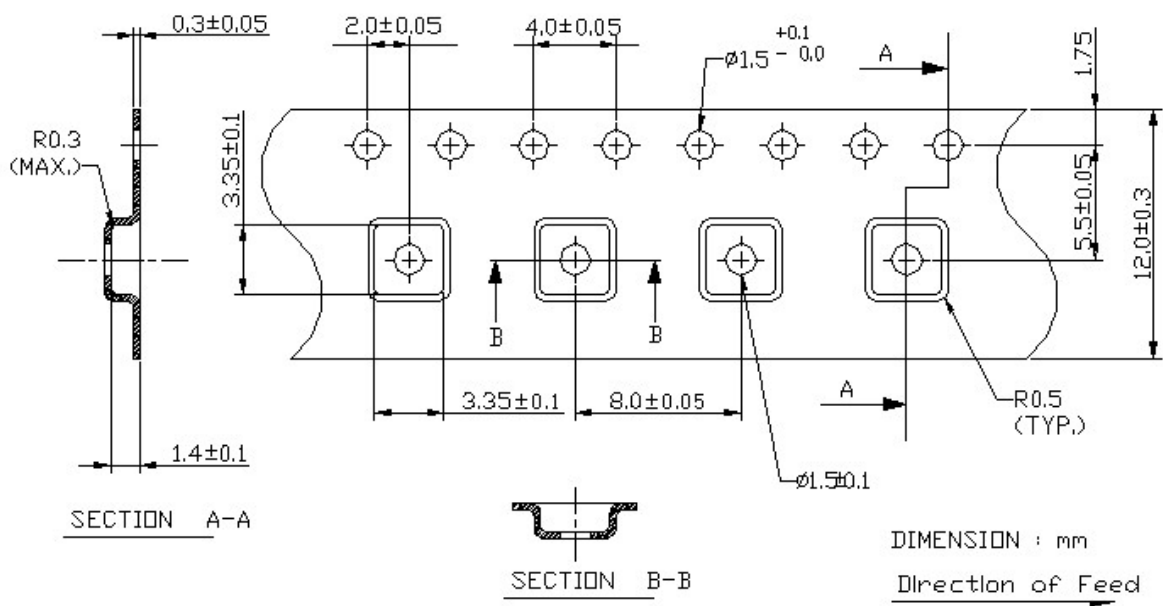
Model: TA0891A
Rev No: 2

G. PACKING:

1. Reel Dimension (Reel Count: 7" = 1000; 13" = 3000)



2. Tape Dimension



SAW Filter 1680.0MHz
Part No: MP02132

Model: TA0891A
Rev No: 2

H. RECOMMENDED REFLOW PROFILE:

