

SAW Filter 48.0MHz

Model: TB0411A

Part No: MP01495

REV. NO.: 1

A. MAXIMUM RATING:

1. Input Power Level: 10 dBm
2. Operating Temperature: -40°C to +85°C
3. Storage Temperature: -40°C to +85°C

B. CHARACTERISTICS:

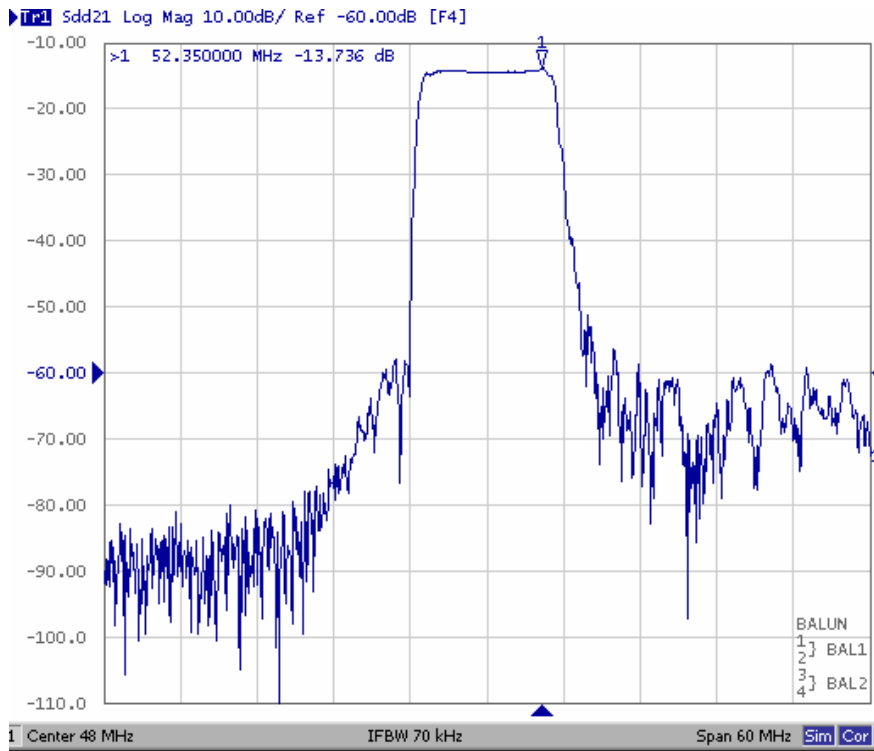
Item	Unit	Min.	Typ.	Max.
Center frequency, Fc	MHz	-	48	-
Insertion Loss, IL	dB	-	13.5	16.0
1 dB Bandwidth	MHz	9	10.1	-
3 dB Bandwidth	MHz	-	10.5	-
Pass band Ripple Fc±4.25MHz	dB	-	0.6	1.2
Group delay Variation Fc±4.5MHz	nsec	-	120	220
Stopband Rejection (ref: Max IL)				
Fc±5.5MHz	dBc	-	5.5	-
Fc±7.75MHz	dBc	35	43	-
Fc±10.0MHz	dBc	40	53	-
Fc+15.0~25.0MHz	dBc	40	52	-
Fc-15.0~25.0MHz	dBc	40	68	-
Operating Temp Range	°C	-40	25	80
Frequency Stability	kHz	-300		300
Termination Impedance	Ohm	50(input), 2000(output)		

SAW Filter 48.0MHz
Part No: MP01495

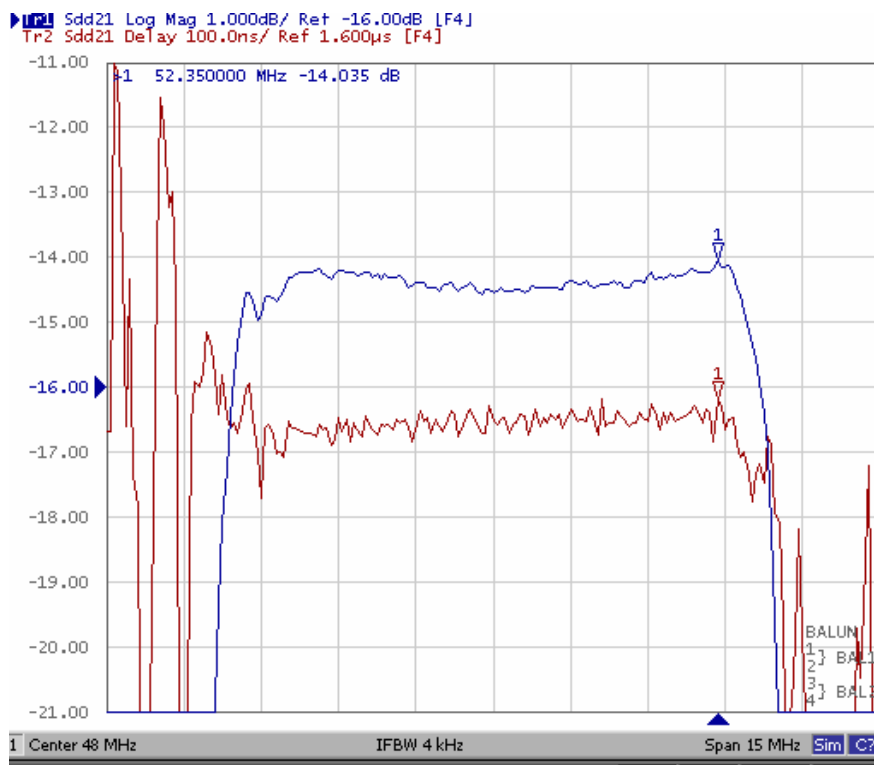
Model: TB0411A
REV. NO.: 1

C. FREQUENCY CHARACTERISTICS:

(1) Wide band Response: (span 60MHz)



(2) Pass band Response: (span 15MHz)



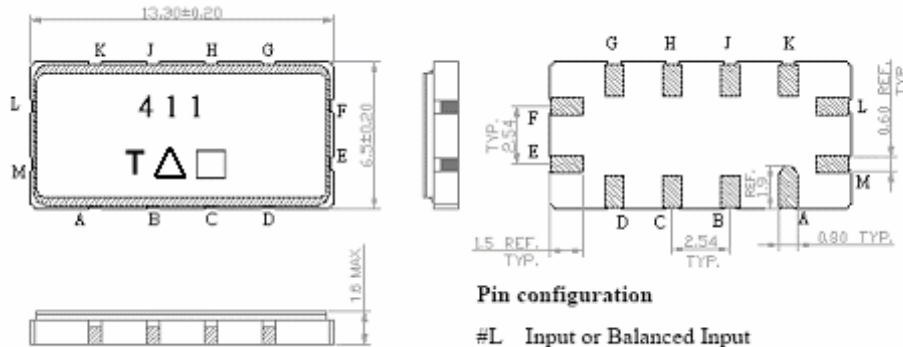
SAW Filter 48.0MHz

Model: TB0411A

Part No: MP01495

REV. NO.: 1

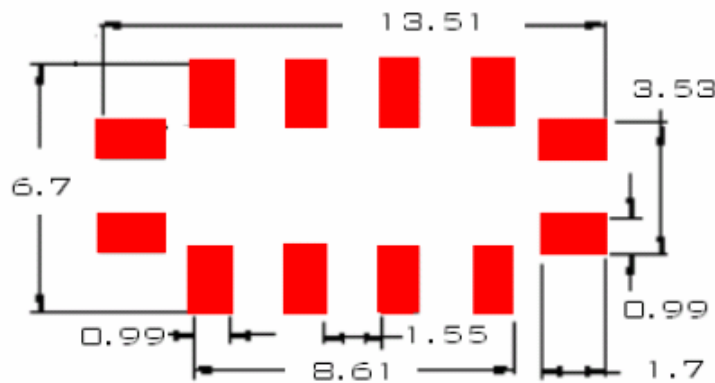
D. OUTLINE DRAWING:



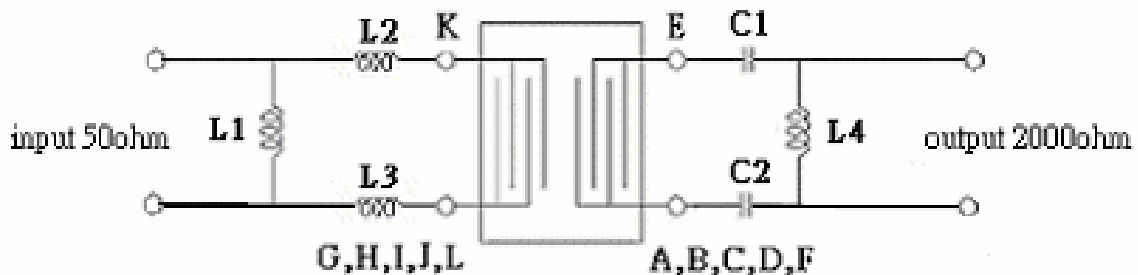
Pin configuration

- #L Input or Balanced Input
- #M Input ground or Balanced Input return
- #E Output or Balanced Output
- #F Output ground or Balanced Output return
- #A,B,C,D,G,H,J,K To be grounded
- Date code
- Unit mm

E. PCB FOOTPRINT:



F. MATCHING CIRCUIT:



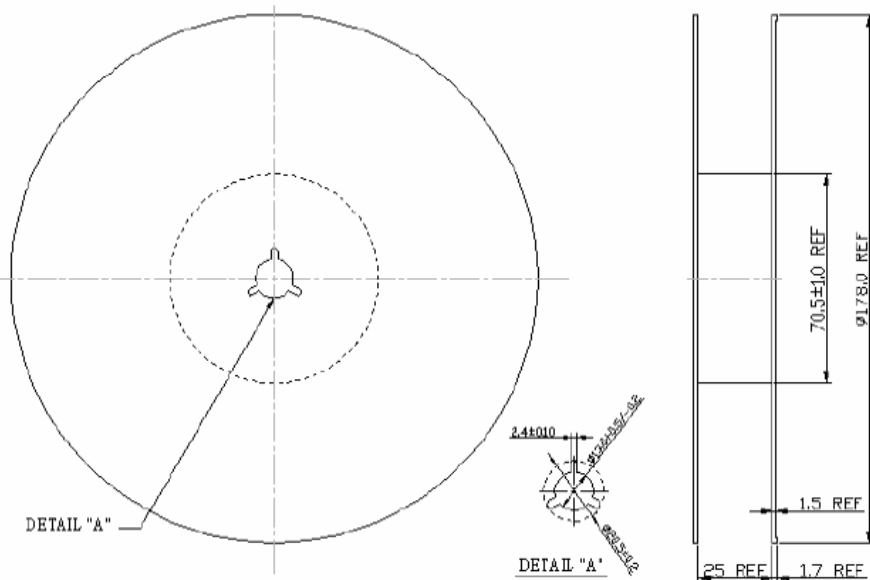
L1=890nH, L2=L3=47nH, L4=970nH, C1= C2=36pF

SAW Filter 48.0MHz
Part No: MP01495

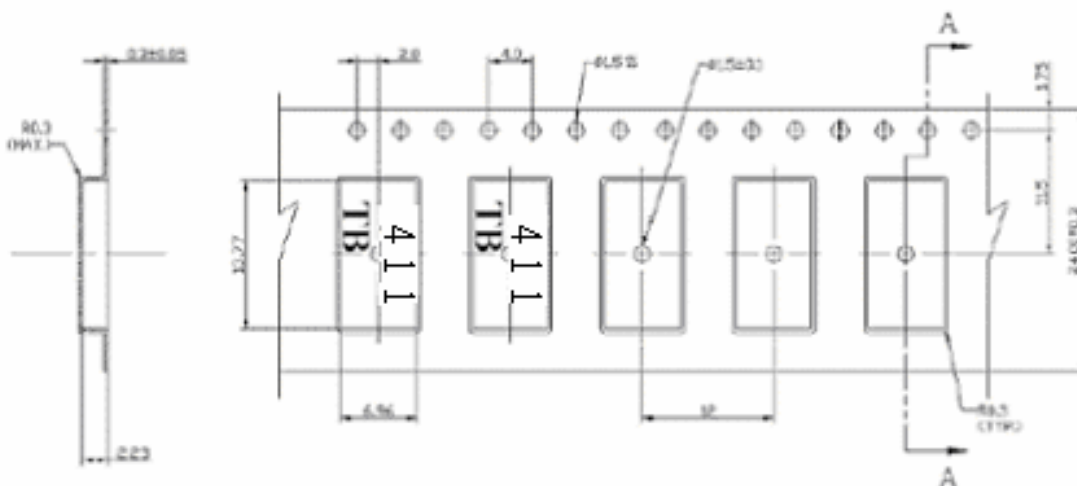
Model: TB0411A
REV. NO.: 1

G. PACKING:

(1). REEL DIMENSION:



(2). TYPE DIMENSION:



SAW Filter 48.0MHz

Model: TB0411A

Part No: MP01495

REV. NO.: 1

H. RECOMMENDED REFLOW PROFILE:

