

SAW Filter 1176.450MHz
Part No: MP01353

Model: TA0675A
Rev. No: 1

A. MAXIMUM RATING:

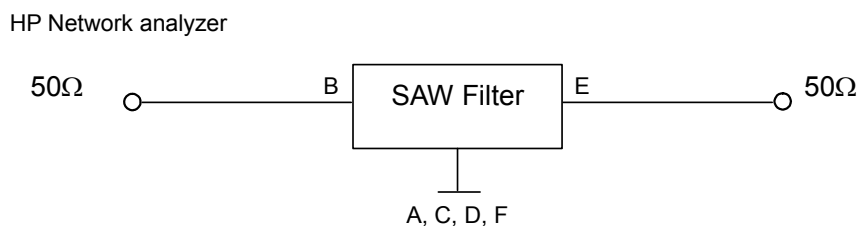
1. Input Power Level: 10dBm
2. DC voltage: 7.5V
3. Operating Temperature: -40°C to 85°C
4. Storage Temperature: -40°C to +85°C

B. CHARACTERISTICS:

Characteristics	Min.	Typ.	Max.	Note
Center frequency Fc MHz	-	1176.45	-	-
Insertion loss 1166.45 ~ 1186.45MHz IL dB	-	3.3	4.1	-
Ripple 1166.45 ~ 1186.45 MHz IL dB	-	1.0	1.5	-
VSWR 1166.45 ~ 1186.45MHz	-	1.5	2.0	-
Attenuation: (Reference level from 0 dB)				
1121.45MHz dB	30	42	-	-
1231.45 MHz dB	30	45	-	-
Source Impedance Z _S Ω	-	50	-	1
Load Impedance Z _L Ω	-	50	-	1

Note: No matching network required for operation at 50Ω

C. MEASUREMENT CIRCUIT:

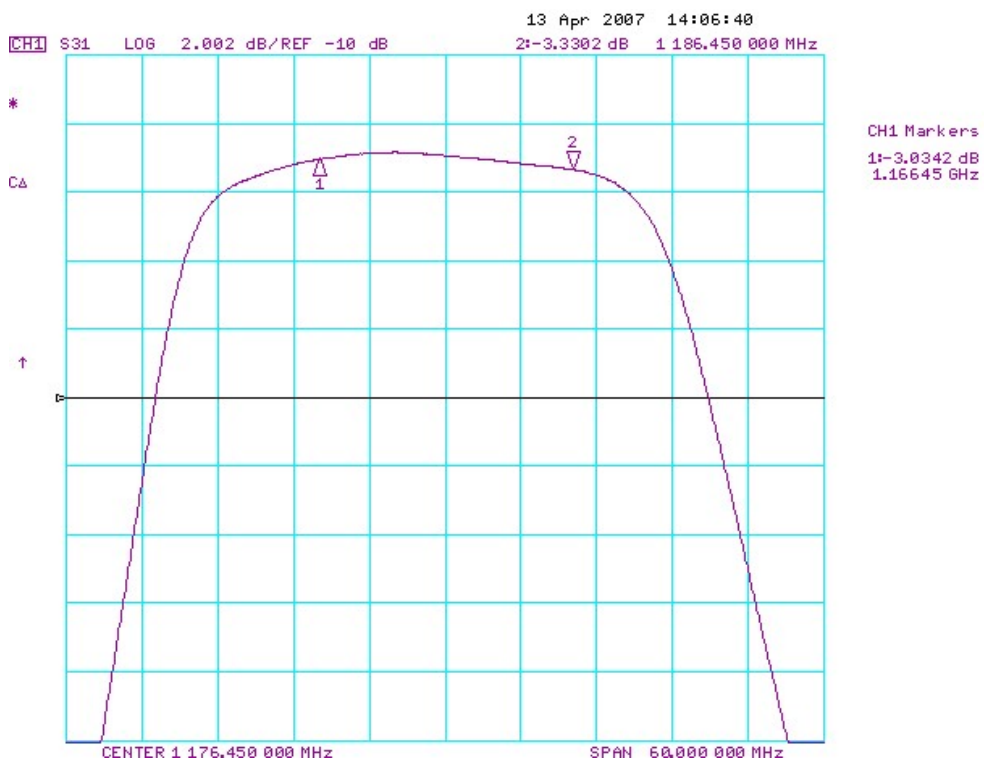
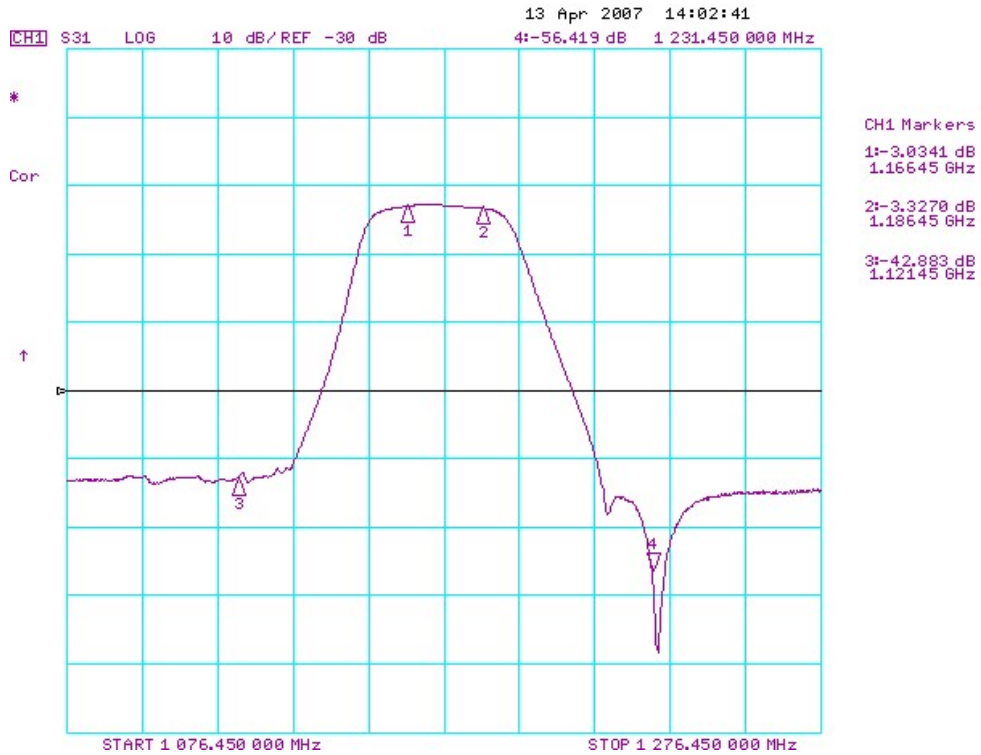


SAW Filter 1176.450MHz
Part No: MP01353

Model: TA0675A
Rev. No: 1

D. FREQUENCY CHARACTERISTICS:

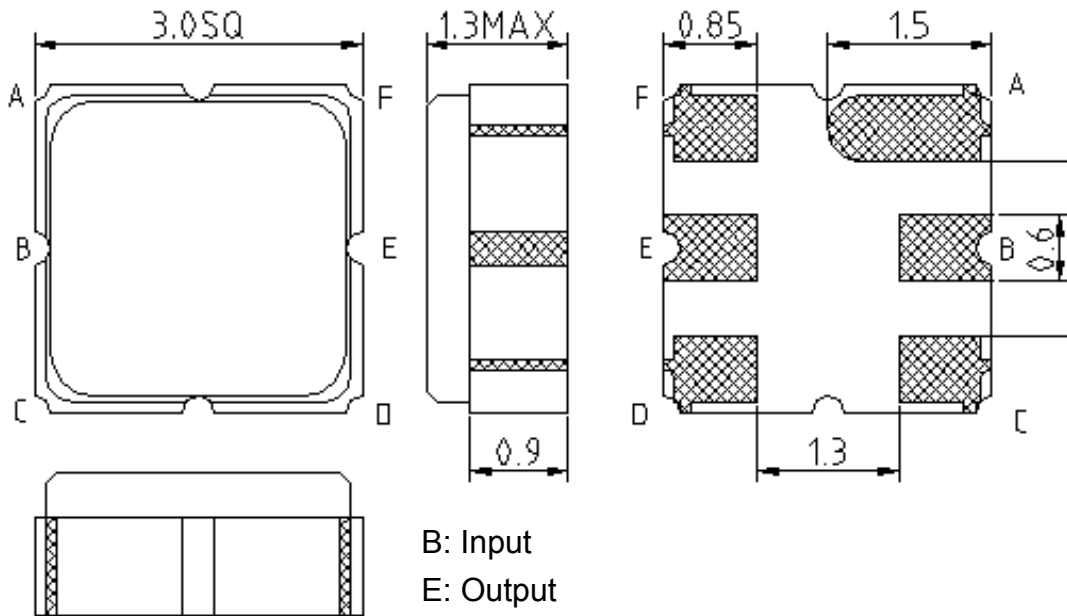
Transfer function:



SAW Filter 1176.450MHz
Part No: MP01353

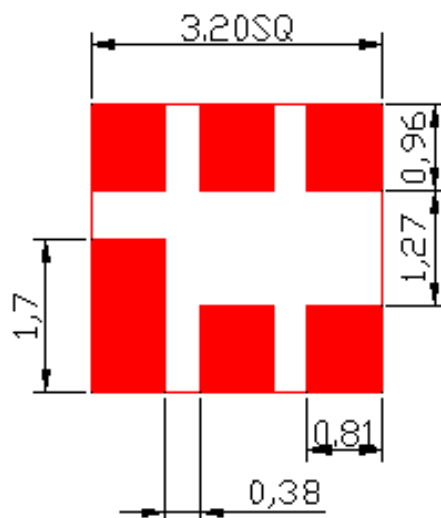
Model: TA0675A
Rev. No: 1

E. OUTLINE DRAWING:



B: Input
 E: Output
 A, C, D, F: Ground
 Unit: mm

F. PCB FOOTPRINT:

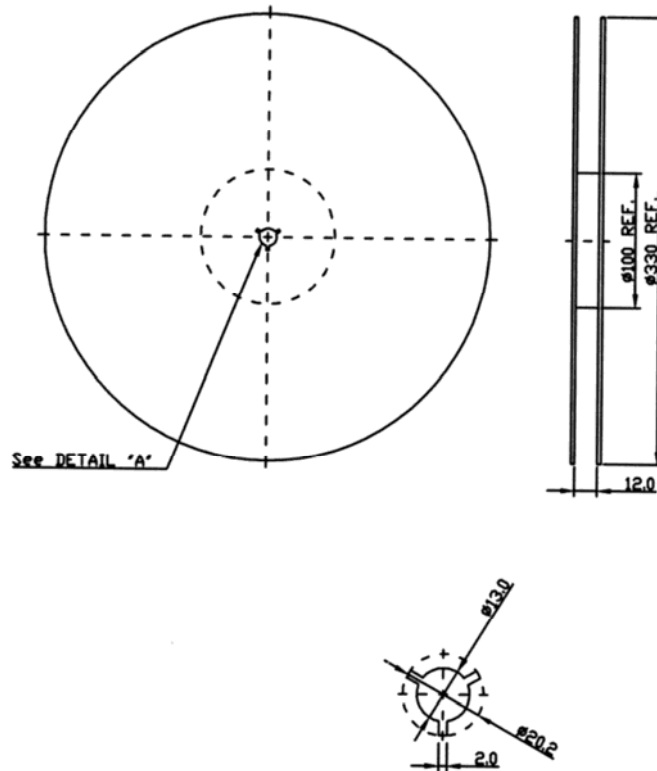


SAW Filter 1176.450MHz
Part No: MP01353

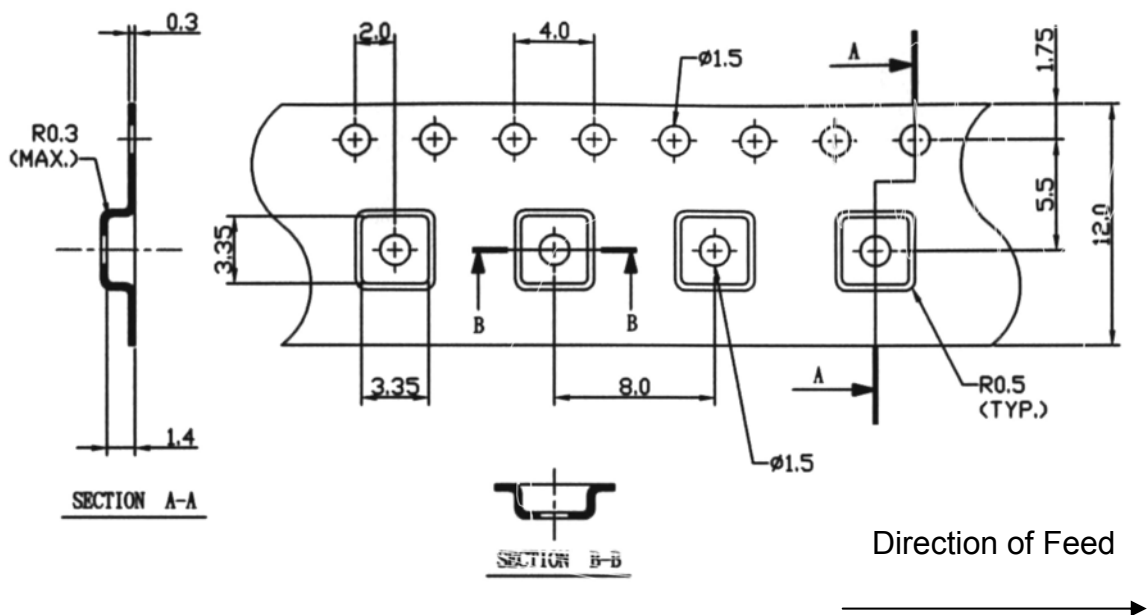
Model: TA0675A
Rev. No: 1

G. PACKING:

1. Reel Dimension



2. Tape Dimension



SAW Filter 1176.450MHz
Part No: MP01353

Model: TA0675A
Rev. No: 1

H. RECOMMENDED REFLOW PROFILE:

