

**SAW Filter 867.50MHz**

**Model: TA0547A**

**Part No: MP01275**

**REV NO.:1**

**A. MAXIMUM RATING:**

1. Input Power Level: 10 dBm
2. DC voltage: 3 V
3. Operating Temperature: -30°C to +85°C
4. Storage Temperature: -40°C to +85°C

**B. ELECTRICAL CHARACTERISTICS:**

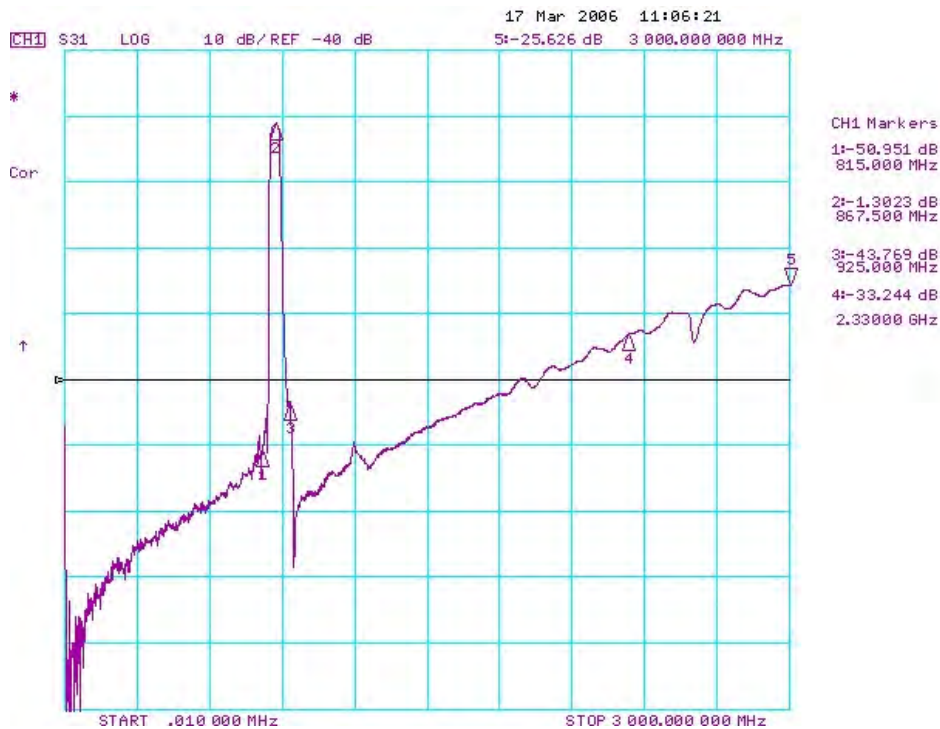
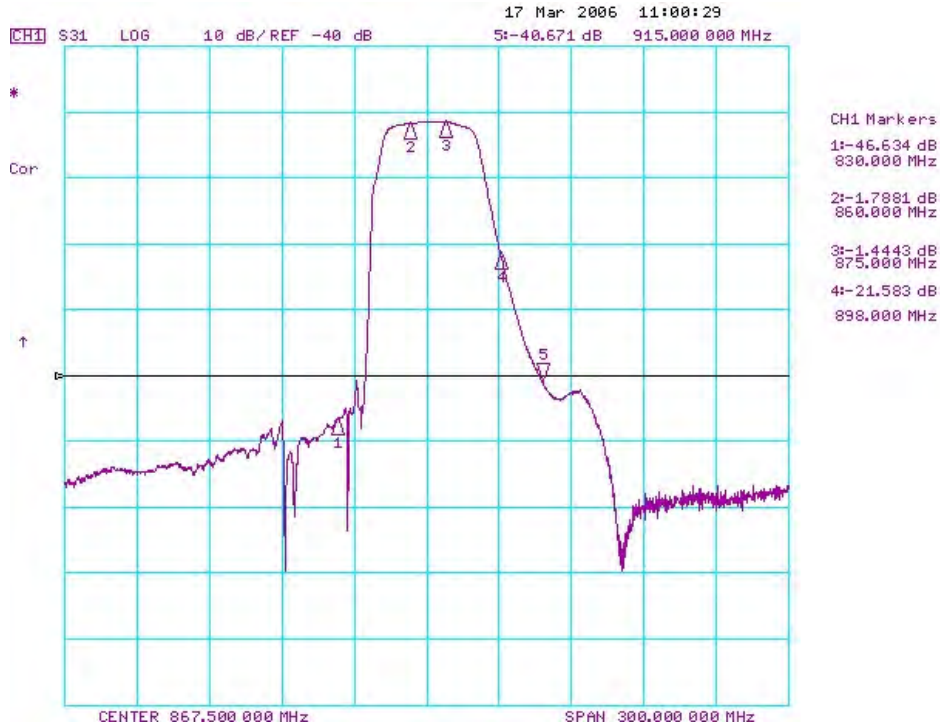
Item		Specification			
		Unit	Min.	Typ.	Max.
Center Frequency	Fc	MHz	-	867.5	-
Insertion Loss	860~875 MHz	dB	-	1.8	3.5
Ripple	860~875 MHz	dB	-	0.4	1.5
VSWR	860~875 MHz		-	1.25	2.0
Attenuation (Reference from 0dB)					
100 ~ 815	MHz	dB	40	47	-
815 ~ 830	MHz	dB	38	46	-
898 ~ 901	MHz	dB	15	21	-
915 ~ 925	MHz	dB	30	40	-
925 ~2330	MHz	dB	28	33	-
2330 ~3000	MHz	dB	20	25	-
Source impedance	Zs	Ω	-	50	-
Load impedance	ZL	Ω	-	50	-

Note1. No matching network required for operation at 50 Ω

**SAW Filter 867.50MHz**  
**Part No: MP01275**

**Model: TA0547A**  
**REV NO.:1**

**C. FREQUENCY CHARACTERISTICS:**

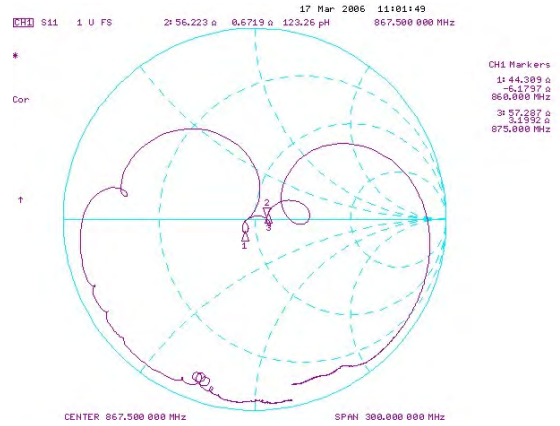


**SAW Filter 867.50MHz**  
**Part No: MP01275**

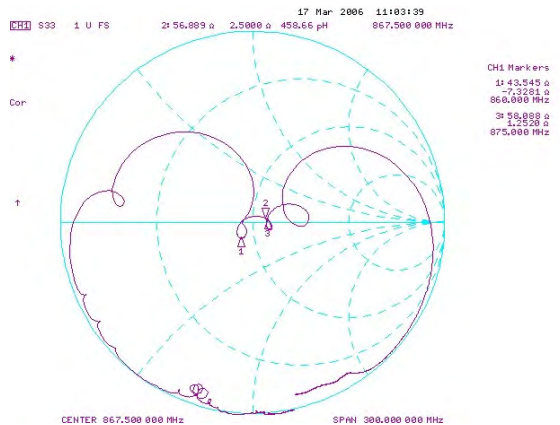
**Model: TA0547A**  
**REV NO.:1**

**Reflection Functions:**

**S11**



**S22**



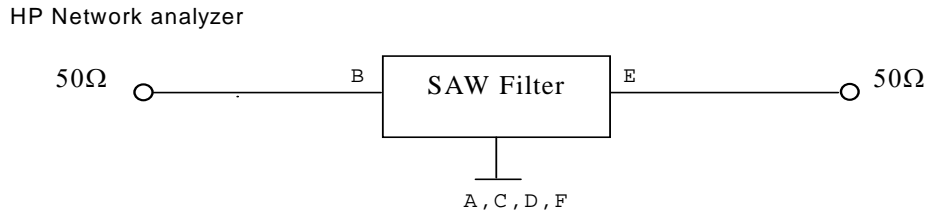
**SAW Filter 867.50MHz**

**Model: TA0547A**

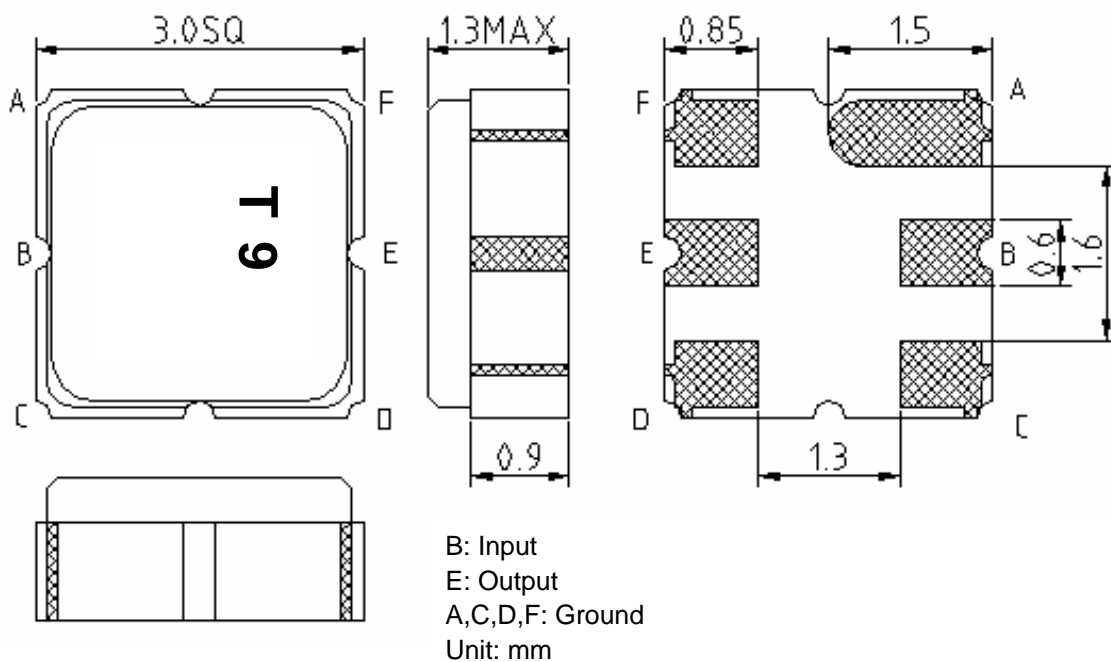
**Part No: MP01275**

**REV NO.:1**

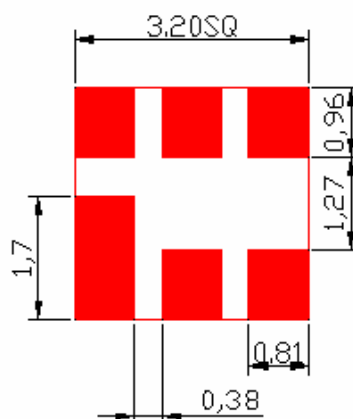
**D. MEASUREMENT CIRCUIT:**



**E. OUTLINE DRAWING:**



**F. PCB FOOTPRINT:**

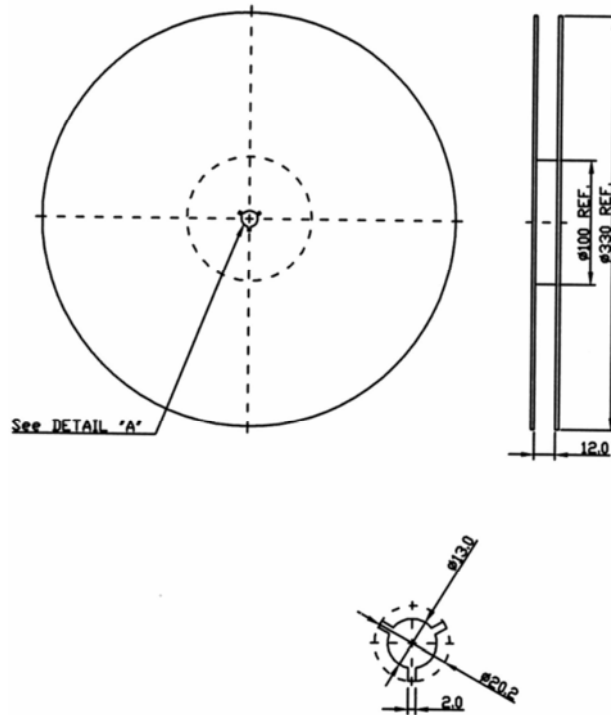


**SAW Filter 867.50MHz**  
Part No: **MP01275**

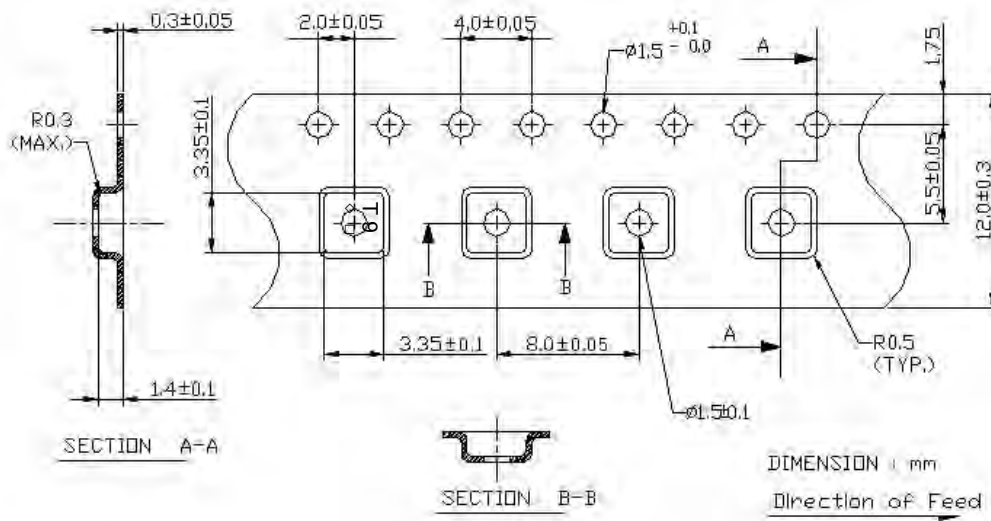
**Model: TA0547A**  
REV NO.:1

**G. PACKING:**

**1. REEL DIMENSION**



**2. TAPE DIMENSION**



**SAW Filter 867.50MHz**  
**Part No: MP01275**

**Model: TA0547A**  
**REV NO.:1**

**H. RECOMMENDED REFLOW PROFILE:**

